

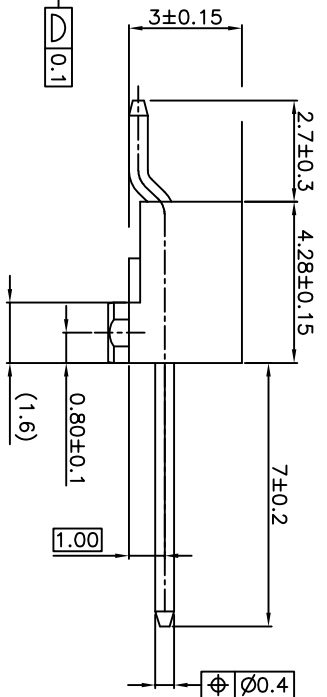
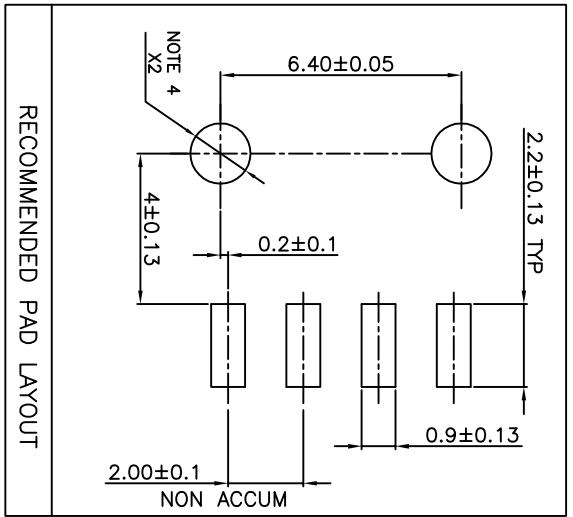
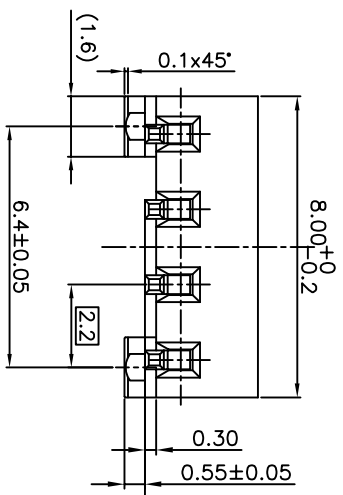
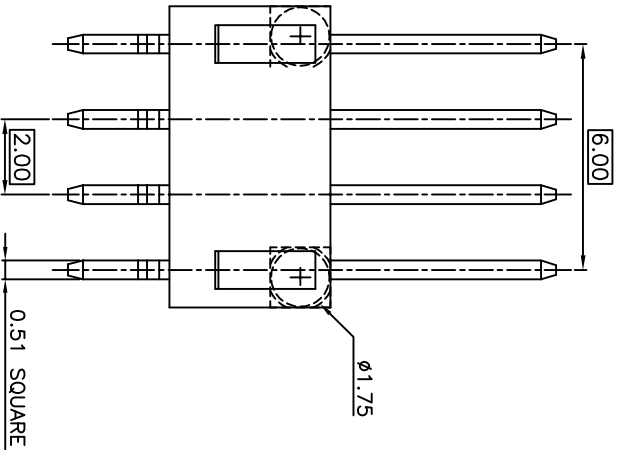
PRODUCT NUMBER
10021507-104TRLF

PLATING _____
 1 = 0.76µm GOLD/GXT ON CONTACT AREA
 2.0µm MIN MATTE TIN ON TAILS
 1.27µm Ni MIN UNDERPLATING

NOTES:

- 1 - HOUSING MATERIAL : LCP
- 2 - TERMINAL MATERIAL : PHOSPHORE BRONZE
- 3 - PACKAGING TR = TAPE & REEL (SEE TA845 FOR PACKAGING SPECS)
- 4 - HOLE DIMENSION TO BE : $\varnothing 1.95 \pm 0.07$ FOR NON INTERFERENCE FIT (LOCATIONAL) APPLICATIONS
- 5 - 10021507-104TRLF IS SIMILAR TO 10021507-104TR IS THE SUFFIX "LF" ADDED FOR EASY LEAD FREE IDENTIFICATION
- 6 - RoHS COMPATIBLE PRODUCT SPECIFICATIONS

- a - PLATING:
 - "LF" MEANS THE PRODUCT IS LEAD-FREE,
- b - MANUFACTURING PROCESS COMPATIBILITY
 - THE HOUSING WILL WITHSTAND EXPOSURE TO 260°C PEAK TEMPERATURE FOR 30 SECONDS MAX IN A CONNECTION, INFRA-RED OR VAPOR PHASE OR REFLOW OVEN.
- c - LABELLING:
 - MEETS PACKAGING SPECS AS PER GS-14-920
- d - LEGAL STATEMENT : SEE GS-47-0004



All rights strictly reserved. Reproduction or issue to third parties in any form without the prior written authorization of FCI is prohibited. Property of : FCI Benelux S. A. Copyright FCI Benelux S. A.



Tous droits strictement reserves. Reproduction ou communication a des tiers sans autorisation écrite de FCI est formellement interdite. Propriété de : FCI Benelux S. A. Droits de reproduction FCI Benelux S. A.

form no. 7530-001-104

1

2

3

4

5

6

mat'l. code		tolerances unless otherwise specified		CUSTOMER COPY		title	
ltr	ecn no	dr	date	linear	projection	scale	product family
A	F05-0414	LMU	05.12.14	linear	1st angle	8 : 1	MINITEK
B	F12-0031	JCO	12.03.20				
C	B-16900	JCO	14.02.03	angles	mm		
D	B-19190	LMU	14.10.24				
eng'g		COMPAGNON		05.12.14		code	
sheet		revision		size		sheet	
index		sheet		dwg no		1 of 1	



UNKEYED MINITEK SR

10021507

X-ON Electronics

Largest Supplier of Electrical and Electronic Components

Click to view similar products for [Headers & Wire Housings](#) category:

Click to view products by [Amphenol](#) manufacturer:

Other Similar products are found below :

[892-18-020-10-001101](#) [58102-G61-06LF](#) [582553-1](#) [0009485154](#) [009176003701906](#) [0050291907](#) [LY20-4P-DT1-P1E-BR](#) [02.125.8002.8](#)
[609-3404](#) [61062-3](#) [622-0430](#) [622-3653LF](#) [63453-116](#) [636-1030](#) [636-1427](#) [636-3427](#) [636-4007](#) [641938-9](#) [641991-4](#) [644827-2](#) [65817-010LF](#)
[65817-015LF](#) [65863-015LF](#) [66207-023LF](#) [67095-007LF](#) [67601157](#) [68648-049](#) [70.362.1628.0](#) [70-4210](#) [70-4226B](#) [70-4853B](#) [707-5020](#) [707-5028](#) [71.350.2428.0](#) [71918-208LF](#) [71961-016LF](#) [733-134](#) [733-162](#) [754199-000](#) [760-3052](#) [787-8014-00](#) [79531-3000](#) [FCN-360C032-B](#) [FCN-367T-T012/H](#) [FCN-723D010/2](#) [80.063.4001.1](#) [800-90-001-10-001000](#) [800-90-010-10-002000](#) [801-43-002-10-013000](#) [801-43-006-10-002000](#)