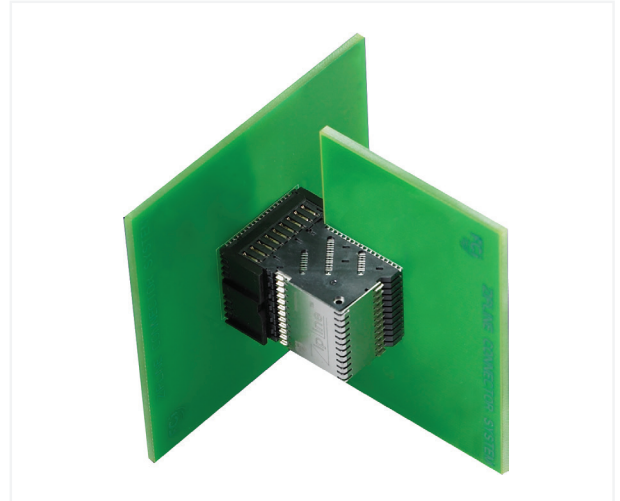


ZIPLINE VS® BACKPLANE/MIDPLANE CONNECTORS

OVERVIEW

The ZipLine® connector system addresses customer demand for maximum signal density – a paramount requirement for future equipment platforms – at data rates up to 12.5Gb/s.

The initial ZipLine® signal modules with 1.8mm column pitch support backplane and orthogonal midplane applications. A module with 72 differential pairs provides the maximum density available by delivering 84.6 differential pairs per inch of card edge. Allowing a minimum 1-inch card slot pitch, the compact module dimensions help system designers address mechanical and thermal concerns. ZipLine® connectors can also be configured on 1.5mm column pitch to provide more than 100 signal pairs per inch of card edge for even more backplane signal density.



FEATURES & BENEFITS

- Modules with 6 differential pairs/column provide maximum linear signal density along card edge: 84.6 differential pairs per inch
- An optional power wafer with up to 36A capacity can be integrated within a 6-pair module
- Stainless steel organizer allows use of flat-rock tooling for connector installation
- Halogen-free signal modules aid efforts to minimize the use of environmentally sensitive materials
- Available power and guide modules complement signal connector offering

TARGET MARKETS / APPLICATIONS

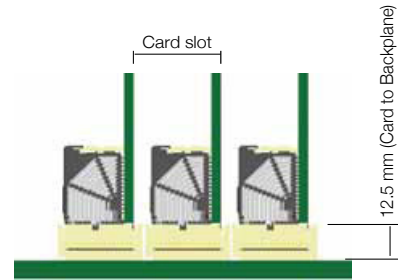
- Communications
 - Routers
 - Switches
 - Networking
 - Access
 - Transport
- Data
 - Servers
 - Storage Systems
- Industrial
 - Medical
 - Test & Measurement



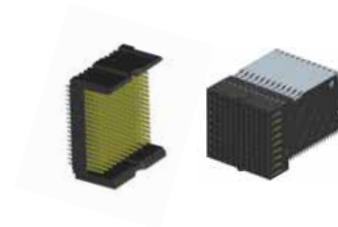
ZIPLINE® SIGNAL MODULES WITH VERTICAL HEADER

TYPICAL APPLICATIONS & SIGNAL DENSITY

Minimum Card Slot Spacing (mm)	Column pitch (mm)	Differential Pairs			Contacts			Product Family
		per column	Linear Density		per column	Linear Density		
			per inch	per cm		per inch	per cm	
27	1.8	6	84.6	33.3	18	254.0	100	ZipLine
27	2.0	5	63.5	25.0	15	190.5	75	AirMax VS
27	3.0	5	42.3	16.7	15	127.0	50	AirMax VS
23	2.0	4	50.8	20.0	12	152.4	60	AirMax VS
23	3.0	4	33.9	13.3	12	101.6	40	AirMax VS
19	2.0	3	38.1	15.0	9	114.3	45	AirMax VS



ZIPLINE® SIGNAL MODULES WITH VERTICAL HEADER



Differential Impedance (ohms)	Minimum Card Slot Spacing (mm)	Differential Pairs		Total Contacts	Number Of Columns	Column Pitch (mm)	Header Type	Module Width Along Card Edge (mm)	Signal Module Part Numbers	
		Total	Per Column						Backplane/Midplane	Daughter Card
									Vertical Receptacle	Right-Angle Header
100	27	96	6	288	16	1.8	2-wall	28.8	10084186-101LF	10084155-101LF
100	27	72	6	216	12	1.8	2-wall	21.6	10076197-101LF	10076209-101LF
100	27	72	6	216	12	1.8	4-wall	21.6	10080638-101LF	10076209-101LF
100	27	66	6	198	11	1.8	2-wall	21.6	10084166-101LF	10084164-101LF
100	27	60	6	180	10	1.8	2-wall	21.6	10084166-103LF	10084164-102LF
100	23	36	6	108	6	3.6	2-wall	21.6	10078557-101LF	10078550-101LF

Note: The Total Contacts and Number of Columns shown represent signal contacts. The ZipLine module with 66 differential pairs also includes an additional column containing a power wafer. The ZipLine module with 60 differential pairs also includes two power wafers.

BPLZPLBMP0T15EA4

X-ON Electronics

Largest Supplier of Electrical and Electronic Components

Click to view similar products for [Hard Metric Connectors](#) category:

Click to view products by [Amphenol](#) manufacturer:

Other Similar products are found below :

[6345127-1](#) [646916-9](#) [6469658-1](#) [973108](#) [1-2000713-0](#) [1-2000713-2](#) [1-2000713-3](#) [120646-1](#) [1645343-1](#) [1645456-1](#) [1645594-1](#) [1645595-1](#)
[1645601-1](#) [1934822-1](#) [278071110010833](#) [1645179-1](#) [1645245-1](#) [1645457-1](#) [1645525-1](#) [1645570-1](#) [1645596-1](#) [17041102202](#) [17-8072-125-](#)
[000-863+](#) [1857470-1](#) [1934275-1](#) [1934289-1](#) [1934759-1](#) [2000673-1](#) [2170292-2](#) [2-536642-6](#) [3-106015-1](#) [352188-1](#) [352629-1](#) [3-646529-0](#)
[5120823-1](#) [5120899-1](#) [3-100145-0](#) [3-100147-0](#) [3-100669-1](#) [3-106081-0](#) [HM2DK2368PLF](#) [5646530-1](#) [3-352049-0](#) [3-352069-0](#) [3-352115-0](#)
[3-352638-0](#) [352189-1](#) [3-646357-0](#) [3-646487-0](#) [3-646513-0](#)