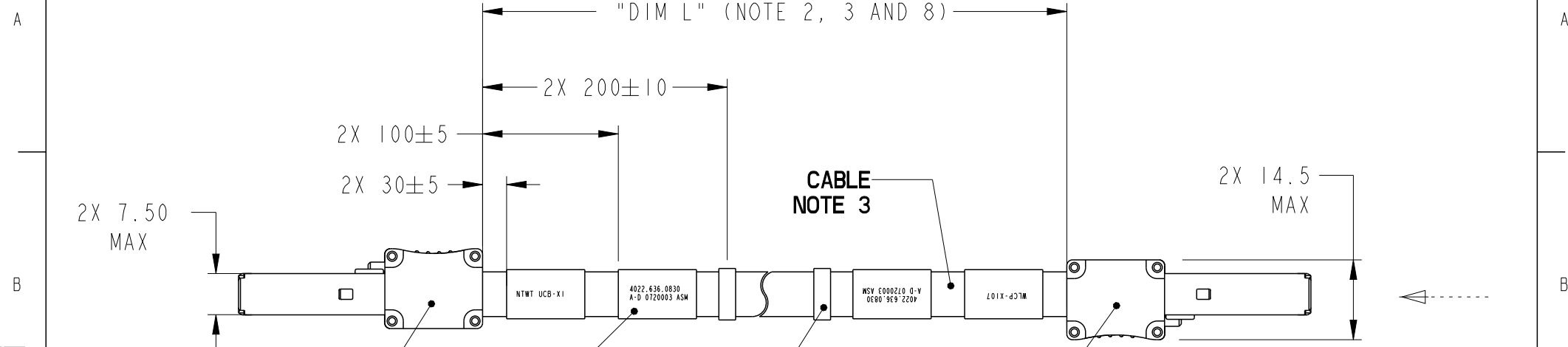


Amphenol  
FCi

PRODUCT NUMBER  
10077488-XXXXXXXXLF



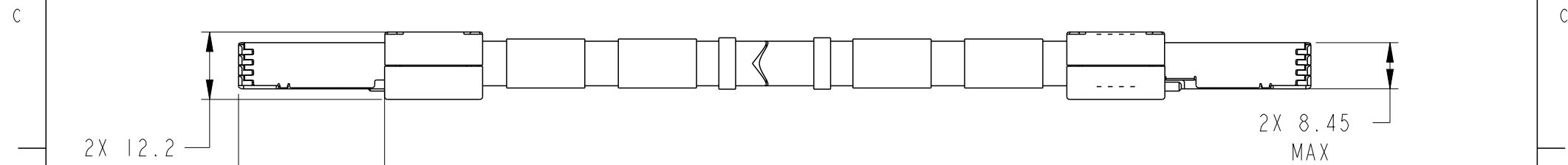
VIEW A  
SHT. 2

END P1  
DENSI-SHIELD I/O  
CONNECTOR  
NOTE 10

4X LABEL  
SEE TABLE 2  
NOTE 4

2X CABLE TIE  
FOR OPTION C ONLY  
SEE TABLE 2  
NOTE 13

END P2  
DENSI-SHIELD I/O  
CONNECTOR  
NOTE 10



2X 12.2  
MAX

2X (26.1)

2X 8.45  
MAX

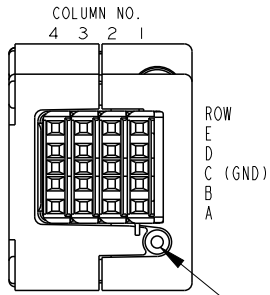
dr	Deborah Ingram	2009/03/27	projection 	MM ←→	size	A4	scale	1:2
eng	Dong Tang	2017/04/21			ecn no	ELX-N-26737-1		
chr	-	-			rel level	Released		
appr	Tim Yao	2017/04/26	product family		C&A			
Amphenol FCi		title			CABLE ASSEMBLY		dwg no	
www.fci.com		DENSI-SHIELD I/O 8 PAIR			10077488		rev	
cat. no.		-			Product - Customer Drw		sheet 1 of 5	

PRODUCT NUMBER  
10077488-XXXXXXXXLF

**TABLE 1  
PIN OUT/WIRING LIST  
SEE NOTE 5**

DW<sub>x</sub> = DRAIN WIRE x  
 RP<sub>x</sub> = RECIEVER PAIR x, POSITIVE POLE  
 RN<sub>x</sub> = RECIEVER PAIR x, NEGATIVE POLE  
 TP<sub>x</sub> = TRANSMITTER PAIR x, POSITIVE POLE  
 TN<sub>x</sub> = TRANSMITTER PAIR, NEGATIVE POLE

END P1		END P2	
PIN NUMBER	WIRE ID	PIN NUMBER	WIRE ID
CI-C4	GROUND	CI-C4	GROUND
CONN SHELL	GROUND	CONN SHELL	GROUND
A1	TN1	E1	RN1
B1	TP1	D1	RP1
D1	RP2	B1	TP2
E1	RN2	A1	TN2
A2	TN6	E2	RN6
B2	TP6	D2	RP6
D2	RP7	B2	TP7
E2	RN7	A2	TN7
A3	TN8	E3	RN8
B3	TP8	D3	RP8
D3	RP3	B3	TP3
E3	RN3	A3	TN3
A4	TN5	E4	RN5
B4	TP5	D4	RP5
D4	RP4	B4	TP4
E4	RN4	A4	TN4



**VIEW A  
SCALE 2:1  
VIEWED FROM  
MATING SIDE**

NOTES:  
OVERALL CABLE SHIELD/BRAID SHOULD BE ISOLATED FROM SIGNAL GROUNDS/DRAIN WIRES

Amphenol FCI

© 2016 AFCI

dr	Deborah Ingram	2009/03/27	projection 	MM 	size	A4	scale	1:2			
eng	Dong Tang	2017/04/21			ecn no	ELX-N-26737-1					
chr	-	-			product family	C&A	rel level	Released			
appr	Tim Yao	2017/04/26	Amphenol FCI		title	CABLE ASSEMBLY		dwg no	10077488	rev	AD
www.fci.com		cat. no.	-	Product - Customer Drw			sheet 2 of 5				

Amphenol  
FCi

© 2016 AFci

PRODUCT NUMBER  
10077488-XXXXXXXXLF



**TABLE 2 LABEL'S**

OPTION-SEE NOTE 4	ITEM	P1 END		P2 END	
		PI	CENTER	CENTER	P2
A	A	SEE NOTE 4	-	-	-
B	D	WLCP-X105	4022.636.07432	4022.636.07432	NTWT UCB-X2
B	E	WLCP-X106	4022.636.07422	4022.636.07422	NTWT UCB-X3
B	F	WRCP-X108	4022.636.07393	4022.636.07393	NTWT UCB-X2
B	I	WRCP-X107	4022.636.07403	4022.636.07403	NTWT UCB-X3
B	J	SPMR-S13X101	4022.636.02533	4022.636.02533	WLCP-X102
B	K	SPMR-S14X101	4022.636.02543	4022.636.02543	WLCP-X101
B	L	WRCP-X104	4022.636.04243	4022.636.04243	SPMR-S14X102
B	M	WRCP-X103	4022.636.04253	4022.636.04253	SPMR-S12X101
B	S	IFSR-S09X101	4022.646.07121	4022.646.07121	GCB-X2
B	T	IFSR-S06X101	4022.646.07131	4022.646.07131	GCB-X3
B	U	APE 398-X2	4022.646.07002	4022.646.07002	GCB-X4
B	V	APE 398-X1	4022.646.07012	4022.646.07012	GCB-X5
B	W	WLCP-X106	4022.646.55131	4022.646.55131	UCB-X3
B	X	WLCP-X105	4022.646.55141	4022.646.55141	UCB-X2
B	Y	WRCP-X108	4022.646.55371	4022.646.55371	UCB-X2
B	Z	WRCP-X107	4022.646.55381	4022.646.55381	UCB-X3
C	2	S14X101/102	4022.646.61431	4022.646.61431	GCB-X3
C	3	S13/S12X101	4022.646.61441	4022.646.61441	GCB-X2
C	4	GCB-X4	4022.646.61461	4022.646.61461	L-X1/R-X2
C	5	GCB-X5	4022.646.61471	4022.646.61471	L-X2/R-X1
B	6	GCB-X4	4022.664.32451	4022.664.32451	APE 398-X2
B	7	GCB-X5	4022.664.32461	4022.664.32461	APE 398-X1

dr	Deborah Ingram	2009/03/27	projection 	MM 	size	A4	scale	1:2
eng	Dong Tang	2017/04/21			ecn no	ELX-N-26737-1		
chr	-	-			rel level	Released		
appr	Tim Yao	2017/04/26	product family	C&A		rev		
		title CABLE ASSEMBLY DENS1-SHIELD I/O 8 PAIR			dwg no 10077488	rev AD		
www.fci.com	cat. no.	-	Product - Customer Drw		sheet 3 of 5			

PRODUCT NUMBER  
10077488-XXXXXXXXLF

NOTES:

1. MATES WITH FCI PART NUMBERS 10044471 SERIES.

2. UNLESS OTHERWISE SPECIFIED ASSEMBLED LENGTH TOLERANCE = +48mm/-0mm

3. PART NUMBER DESCRIPTION/DENSI-SHIELD CONNECTOR:

10077488 - N XX XX X D LF

WIRE GAGE  
N: 26 AWG

LF: LEAD FREE (NOTE 9)

HARDWARE TYPE

D: HIGH SPEED VERSION + INTRA-HEXAGON SCREW VERSION

ITEM LETTER IN TABLE 2

LENGTH "DIM L"  
XXXX: XX METERS, XX CENTIMETERS  
EXAMPLES OF LENGTH GIVEN BELOW:  
0046 = 00 METERS 46 CENTIMETERS  
0500 = 05 METERS 00 CENTIMETERS

EXAMPLE: 10077488-N0500BDLF = 26 AWG, 05 METER, 00 CENTIMETERS, HIGH SPEED + HEXAGON SCREW, AND IS LEAD FREE

4. LABEL INFORMATION:

OPTION A

- FCI
- FCI PART NUMBER
- DATE CODE(YY/MM/DD) - SERIAL NUMBER
- CUSTOMER PART NUMBER
- COUNTRY ORIGIN

FONT SHALL BE CLEARLY VISIBLE AND BLACK IN COLOR.

OPTION B & C

FOR 10077488-N01006DLF, WE SHOULD STICK ONLY ONE LABEL IN THE CENTER.  
THE MARKING SIZE HEIGHT OF THE TEXT 2.5mm±0.1mm MINIMUM USE

SanSerif Font

TEST LEVEL

EXAMPLE: A-D (ENCIRCLING AFTER TESTING THE CABLE ASSEMBLY) PROTECTIVE LABEL  
ENCIRCLING (A-D) LETTERS IN EACH LABEL AFTER PAST FINAL ELECTRICAL TEST.

SERIAL NUMBER

THE SERIAL NUMBER MUST BE SET UP AS FOLLOWS:

- TWO CHARACTERS REPRESENTING THE YEAR (E.G.: 07 FOR 2007)
- TWO CHARACTERS REPRESENTING THE WEEK NUMBER (E.G.: 20)
- THREE CHARACTERS REPRESENTING THE SERIES CODE (E.G.: 003)
- THREE CHARACTER VENDOR ID, AGREED WITH ASML-SCE (E.G.: ASM)
- SEE EXAMPLE BELOW:

ENCIRCLE A-D LETTERS  
AFTER PASSING FINAL  
ELECTRICAL TEST

4022.636.0830  
(A-D) 0720003 ASM

dr	Deborah Ingram	2009/03/27	projection 	MM 	size	A4	scale	1:2			
eng	Dong Tang	2017/04/21			ecn no	ELX-N-26737-1					
chr	-	-			product family	C&A	rel level	Released			
appr	Tim Yao	2017/04/26	Amphenol FCi		title	CABLE ASSEMBLY DENSI-SHIELD I/O 8 PAIR		dwg no	10077488	rev	AD
www.fci.com		cat. no.	-	Product - Customer Drw			sheet 4 of 5				

PRODUCT NUMBER  
10077488-XXXXXXXXLF

NOTES CONTINUED:

- 5. ALL CABLE ASSEMBLIES SHALL BE TESTED 100% FOR CONTINUITY AS DEFINED IN WIRING LIST.
- 6. UNLESS OTHERWISE SPECIFIED ALL CABLE ASSEMBLIES SHALL BE 100% HI-POT TESTED PER PRODUCT SPECIFICATION: GS-12-314.
- 7. OTHER TESTING PERFORMED AS REQUIRED BY PRODUCT SPECIFICATION: GS-12-314.
- 8. THIS DIMENSION IS A FINISHED PRODUCT LENGTH.
- 9. LEAD FREE PRODUCTS MEET EUROPEAN UNION DIRECTIVES AND OTHER COUNTRY REGULATIONS AS DESCRIBED IN GS-47-0004.
- 10. CONNECTOR ASSEMBLIES SHOWN ARE FOR REFERENCE ONLY AND MAY NOT SHOW ALL PART DETAIL. REFERENCE CONNECTOR ASSEMBLY DRAWINGS FOR COMPLETE DETAILS.
- 11. PACKAGING PER GLOBAL STANDARD GS-14-1272.
- 12. MATERIALS:  
 COVERS: ZINC ALLOY, Cu-Ni-Sn PLATED.  
 SHEET METAL COVER: STAINLESS STEEL  
 FERRULES: COPPER ALLOY, Ni-Sn PLATED  
 TERMINAL BLOCK:  
 -HOUSING: THERMOPLASTIC  
 -TERMINALS: COPPER ALLOY, FINISH: MIN 0.8um Au ON  
 -Ni-UNDER LAYER IN CONTACT AREA.  
 -TRANSITION BOARD: FR4 FIBERGLASS FILLED EPOXY.  
 -HEXAGON SCREW: STAINLESS STEEL  
 -SCREW STOP: TEFLON
- 13. FOR OPTION C, APPLY TWO CABLE TIE ON CABLE.



dr	Deborah Ingram	2009/03/27	projection 	MM 	size	A4	scale	1:2
eng	Dong Tang	2017/04/21			ecn no	ELX-N-26737-1		
chr	-	-			rel level	Released		
appr	Tim Yao	2017/04/26	product family		C&A			
		title CABLE ASSEMBLY Densi-Shield I/O 8 PAIR			dwg no 10077488		rev AD	
www.fci.com		cat. no.	-		Product - Customer Drw		sheet 5 of 5	

## X-ON Electronics

Largest Supplier of Electrical and Electronic Components

*Click to view similar products for [Specialised Cables category](#):*

*Click to view products by [Amphenol manufacturer](#):*

Other Similar products are found below :

[GP-IE515546DS-002](#) [7810SB-010-1000](#) [96CB-L2020PIB2](#) [1200740161](#) [R88ACAKA0015SRE](#) [R88ACAWL005SDE](#) [R88ACRGD0R3C](#)  
[1300660042](#) [1300660201](#) [1971465-2](#) [22733-8](#) [2R7004A20F060](#) [SSL009PC2DC012N](#) [FC2A-KC6C](#) [CCSFCBF2](#) [R7ACAB005S](#)  
[XS2WM12PUR4SA10M](#) [XS2WM12PVC4SA10M](#) [05AU05](#) [UCABLE](#) [10114734-2010LF](#) [XW2Z010H3](#) [XW2Z010H1](#) [5-1589827-8](#) [5-](#)  
[1589827-4](#) [861084-1](#) [XW2Z200JB24](#) [5-1589956-8](#) [CR4000A76M020](#) [1201140211](#) [1300140039](#) [CR4000A76M005](#) [CR4006A76M005](#)  
[10077488-N0550FDLF](#) [XW2ZRY150C](#) [I4JPBJLUXX100](#) [I4JPBJLUXX50](#) [CM06](#) [CM06W](#) [POE004](#) [0243 009 05](#) [0243 009 20](#) [0243 009 36](#)  
[0243 009 26](#) [0243 009 33](#) [0243 009 23](#) [0243 009 01](#) [0243 009 30](#) [0243 008 05](#) [0243 008 20](#)