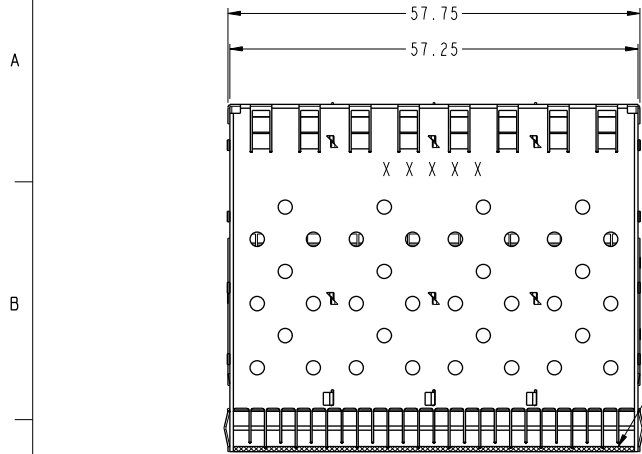
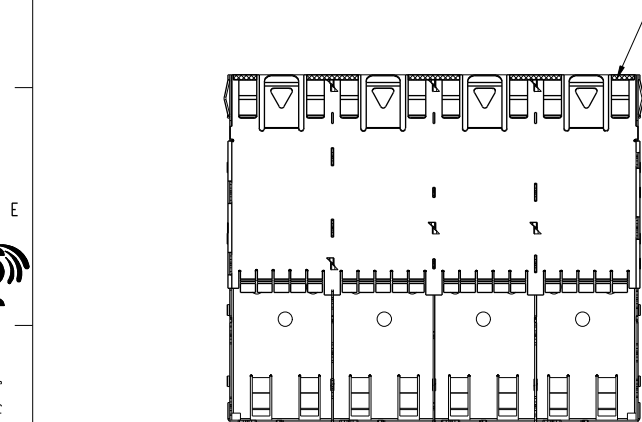
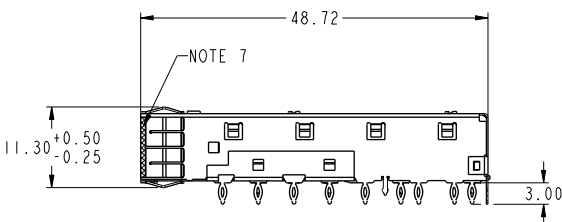
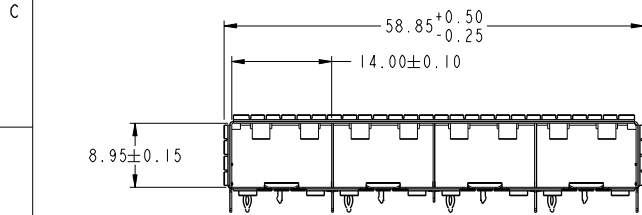
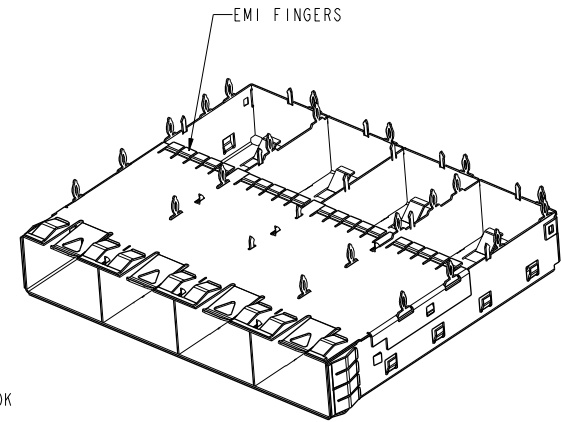
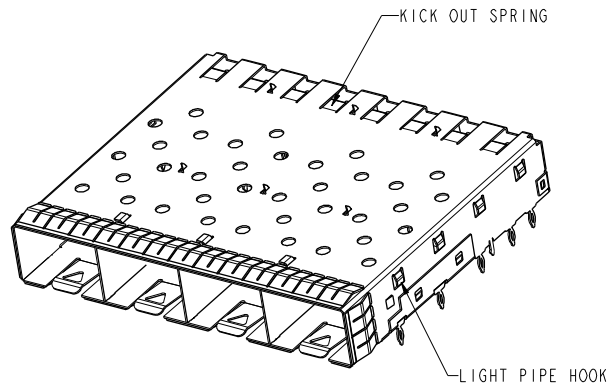


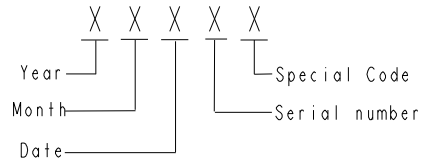
PRODUCT NUMBER	PACKAGING
10099102-011LF	TRAY



NOTE 7



NOTE 7



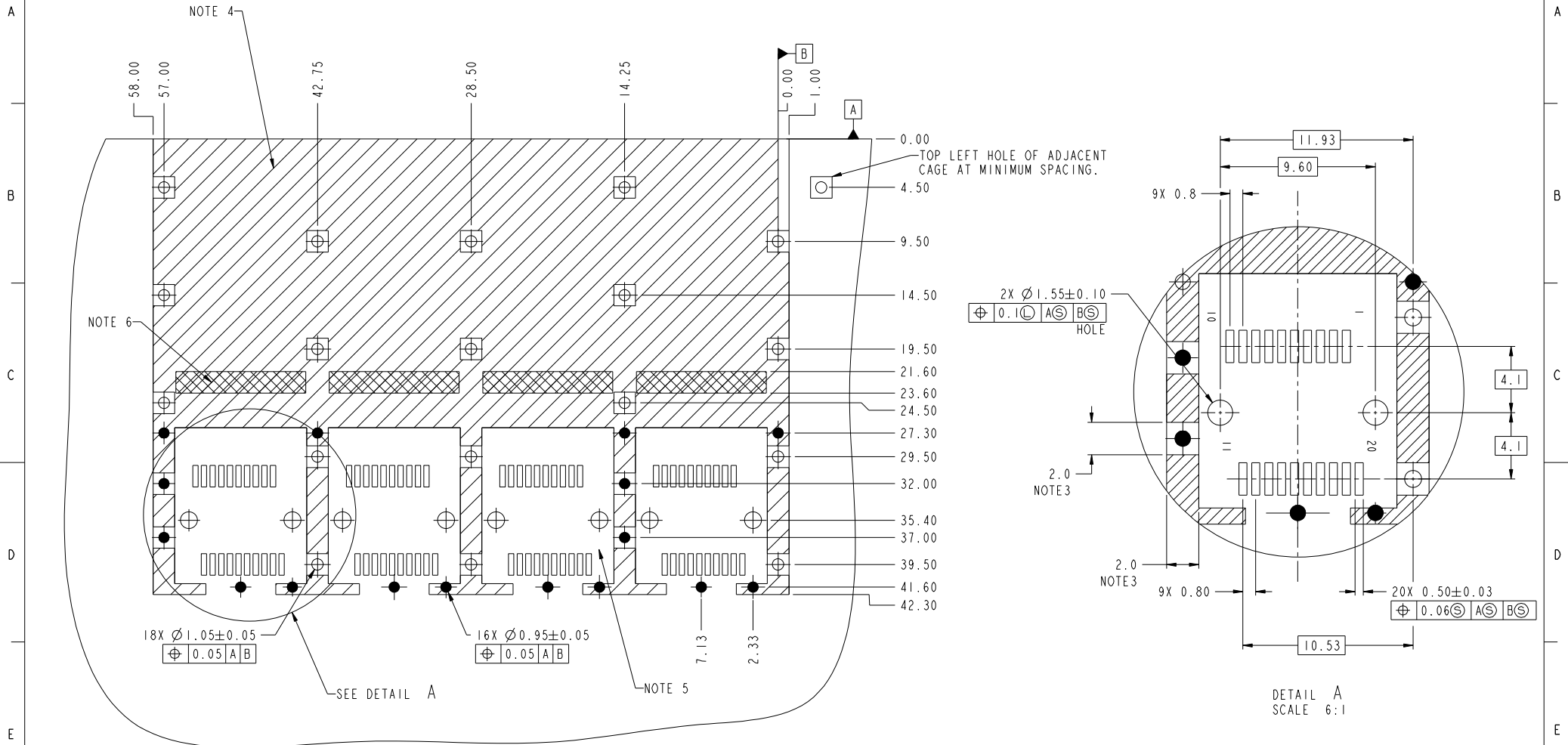
NOTES:

1. MATERIAL: COPPER ALLOY.
2. CAGE BODY: 50-200u" BRIGHT NICKEL PLATING OVER ALL. EMI FINGER: 50-200u" BRIGHT NICKEL PLATING OVER ALL.
3. PADS AND VIAS ARE FOR CHASSIS GROUND.
4. HATCHED AREA DENOTES COMPONENT AND TRACE KEEP-OUT (EXCEPT CHASSIS GROUND).
5. THIS AREA DENOTES COMPONENT KEEP-OUT (TRACES ALLOWED).
6. CROSS-HATCHED AREA EXPOSED CHASSIS GROUND (NO OSP).
7. BARE COPPER IS ACCEPTABLE IN THIS AREA.
8. PRODUCT SPECIFICATION: GS-12-616
9. APPLICATION SPECIFICATION: GS-20-125
10. PRODUCT MEETS EUROPEAN UNION DIRECTIVES AND OTHER COUNTRY REGULATIONS AS DESCRIBED IN GS-22-008.
11. DATE CODE BE PRINTED ON PROPER SURFACE.

Copyright FCI. FCI

www.fciconnect.com		surface ASME Y14.5	tolerance std ASME Y14.5	projection	MM
		TOLERANCES UNLESS OTHERWISE SPECIFIED			
Dr	S. MANI	2009-05-02	ANGULAR	size A2	Scale 2:1
Eng	M. GRAY	2009-05-27	LINEAR	ECN	N10-0376
Chr	M. GRAY	2009-05-27	0° ±1"	Product family	SFP+
Appr	M. GRAY	2009-05-27	Spec ref		RELEASE
FCI		SFP+ 1X4 CAGE		10099102	Rev. B
TOP MOUNT		CUSTOMER		sheet 1 of 3	

PRODUCT NUMBER
10099102-011LF

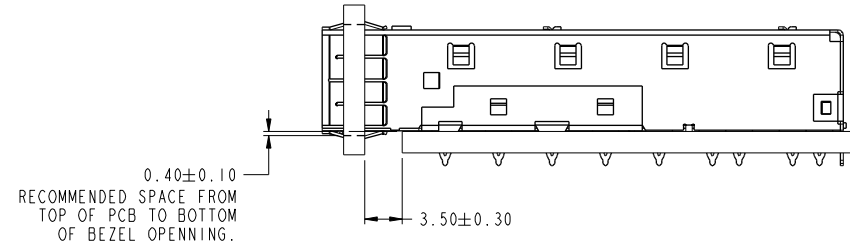
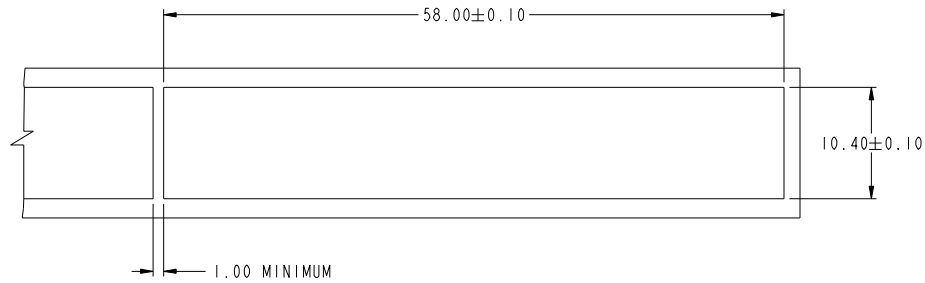


SFP HOST BOARD MECHANICAL LAYOUT

Copyright FCI
FCI

www.fciconnect.com			surface ASME Y14.5	tolerance std ASME Y14.5	projection MM	TOLERANCES UNLESS OTHERWISE SPECIFIED	
Dr	S. MANI	2009-05-02	ANGULAR	0.x	± 0.25	size	A2
Eng	M. GRAY	2009-05-27	LINEAR	0.xx	± 0.15	Scale	1:1
Chr	M. GRAY	2009-05-27	0° ±1°	0.xxx	±	ECN	N10-0376
Appr	M. GRAY	2009-05-27	Product family	SFP+		Spec ref	RELEASE
FCI			TITLE SFP+ 1X4 CAGE TOP MOUNT		catalog no	10099102	Rev. B
CUSTOMER						sheet 2 of 3	

PRODUCT NUMBER
10099102-011LF



BEZEL AND BOARD DIMENSIONS FOR SINGLE SIDE MOUNTING

Copyright FCI.
FCI

www.fciconnect.com			surface ASME Y14.5	tolerance std ASME Y14.5	projection	MM
			TOLERANCES UNLESS OTHERWISE SPECIFIED			
Dr	S. MANI	2009-05-02	ANGULAR	LINEAR	size	Scale
Eng	M. GRAY	2009-05-27	0° ±1°	0.x ±0.25	A2	1:1
Chr	M. GRAY	2009-05-27	0°.xxx ±0.15	±.	ECN	N10-0376
Appr	M. GRAY	2009-05-27	Product family	SFP+	Spec ref	RELEASE
FCI			SFP+ 1X4 CAGE		diag no	Rev.
			TOP MOUNT		10099102	B
			catalog no		CUSTOMER	sheet 3 of 3

X-ON Electronics

Largest Supplier of Electrical and Electronic Components

Click to view similar products for [I/O Connectors](#) category:

Click to view products by [Amphenol](#) manufacturer:

Other Similar products are found below :

[571763P](#) [58098-0628](#) [72.250.1628.2](#) [72.250.2428.2](#) [74720-0505](#) [76.350.0729.0](#) [76871-1403](#) [FCN-244F080-G/1](#) [FCN-260A9920](#) [PCR-E36PM](#) [PCS-XE26MA+](#) [G38A71314B](#) [1571250010](#) [157-22500-3](#) [MS3471L14-19P L/C](#) [192991-0703](#) [172501-4002](#) [172501-6002](#) [FCN-260C008-A/L0](#) [FCN-260C024-AL0](#) [FCN-261Z008](#) [2000314-1](#) [200331-1](#) [PCR-E36FC+](#) [PCS-E28FS+](#) [PCS-XE26SLFD+](#) [PCS-XE26SLFDT+](#) [G730VID08BDC24](#) [HDR-E14MSG1+](#) [U90B2054081210](#) [UE86K842720321](#) [38113800006](#) [DP3AR020WQ1R200](#) [Z4.102.0680.0](#) [500-1040](#) [500-1052](#) [500-1054](#) [ZP-4008-66L](#) [0709821002](#) [DX40-20P\(55\)](#) [5554841-1](#) [MS3474W18-8P-LC*](#) [SM3106F14S-7S-LC](#) [U90B3054061110](#) [U65-E04-4020](#) [ZPF000000000097891](#) [557-262M2-06C](#) [747360449](#) [10099439-003C-TRLF](#) [10137239-0021LF](#)