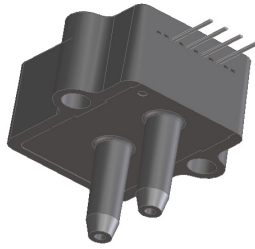


# Amplified Middle Pressure Sensors

## Industrial Temperature Grade



### Features

- 0 to 0.3 psi to 0 to 100 psi Pressure Ranges
- Ratiometric 4V Output
- Temperature Compensated (-25C to 85C)
- Calibrated Zero and Span

### Applications

- Medical Instrumentation
- Environmental Controls
- HVAC

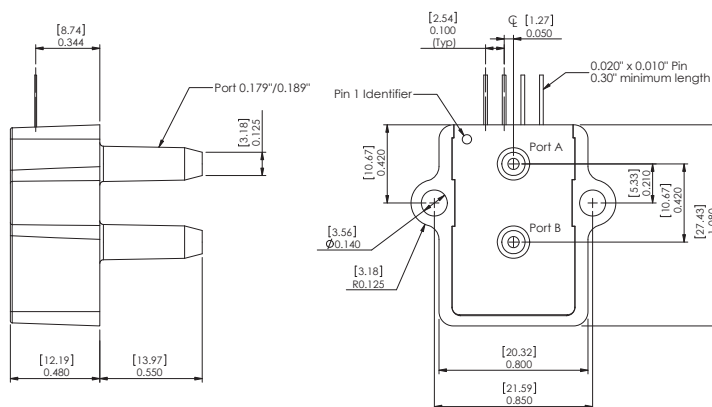
### General Description

The Amplified line of middle pressure sensors is based upon a proprietary package technology to reduce errors. This model provides a ratiometric 4-volt output with superior output characteristics. The sensor housing has been designed specifically to reduce package induced parasitic stress and strain. In addition the sensor utilizes a silicon, micromachined, stress concentration enhanced structure to provide a very linear output to measured pressure.

These calibrated and temperature compensated sensors give an accurate and stable output over a wide temperature range. Each sensor is internally compensated using an ASIC compensation technique. This series is intended for use with non-corrosive, non-ionic working fluids such as air, dry gases and the like.

The output of the device is ratiometric to the supply voltage over a supply voltage range of 4.5 to 5.5 volts.

### Physical Dimensions



- pin 1: Vs**
- pin 2: Gnd**
- pin 3: Vout**
- pin 4: do not connect**

### Approvals

| MKT   | DATE | MFG   | DATE | ENG   | DATE | QA  | DATE |
|---|------|---|------|---|------|---|------|
| <input type="checkbox"/> As Is <input type="checkbox"/> With Change |      | <input type="checkbox"/> As Is <input type="checkbox"/> With Change |      | <input type="checkbox"/> As Is <input type="checkbox"/> With Change |      | <input type="checkbox"/> As Is <input type="checkbox"/> With Change |      |



## Pressure Sensor Ratings

|   |                  |
|---|------------------|
| Supply Voltage VS                             | +4.5 to +5.5 Vdc |
| Common-mode pressure                          | -10 to +10 psig  |
| Lead Temperature, max<br>(soldering 2-4 sec.) | 250°C            |

## Environmental Specifications

|                    |                                 |
|--------------------|---------------------------------|
| Temperature Ranges |                                 |
| Compensated        | -25 to 85° C                    |
| Operating          | -40 to 125° C                   |
| Storage            | -40 to 125° C                   |
| Humidity Limits    | 0 to 95% RH<br>(non condensing) |

## Standard Pressure Ranges

| Part Number        | Operating Pressure | Nominal Span | Proof Pressure | Burst Pressure |
|--------------------|--------------------|--------------|----------------|----------------|
| 0.3 PSI-D-4V-PRIME | ±0.3 PSI           | 4 V          | 5 PSI          | 10 PSI         |
| 0.3 PSI-G-4V-PRIME | 0 - 0.3 PSI        | 4 V          | 5 PSI          | 10 PSI         |
| 1 PSI-D-4V-PRIME   | ±1 PSI             | 4 V          | 5 PSI          | 10 PSI         |
| 1 PSI-G-4V-PRIME   | 0 - 1 PSI          | 4 V          | 5 PSI          | 10 PSI         |
| 5 PSI-D-4V-PRIME   | ± 5 PSI            | 4 V          | 15 PSI         | 30 PSI         |
| 5 PSI-G-4V-PRIME   | 0 - 5 PSI          | 4 V          | 15 PSI         | 30 PSI         |
| 15 PSI-A-4V-PRIME  | 0 - 15 PSIA        | 4 V          | 45 PSI         | 60 PSI         |
| 15 PSI-D-4V-PRIME  | ±15 PSI            | 4 V          | 45 PSI         | 60 PSI         |
| 15 PSI-G-4V-PRIME  | 0 - 15 PSI         | 4 V          | 45 PSI         | 60 PSI         |
| 30 PSI-A-4V-PRIME  | 0 - 30 PSIA        | 4V           | 90 PSI         | 150 PSI        |
| 30 PSI-D-4V-PRIME  | ±30 PSI            | 4 V          | 90 PSI         | 150 PSI        |
| 30 PSI-G-4V-PRIME  | 0 - 30 PSI         | 4 V          | 90 PSI         | 150 PSI        |
| 100 PSI-A-4V-PRIME | 0 - 100 PSIA       | 4V           | 150 PSI        | 150 PSI        |
| 100 PSI-D-4V-PRIME | ±100 PSI           | 4V           | 150 PSI        | 150 PSI        |
| 100 PSI-G-4V-PRIME | 0 - 100 PSI        | 4V           | 150 PSI        | 150 PSI        |

## Performance Characteristics for 0.3 PSI-D-4V-PRIME

| Parameter, note 1                                | Minimum | Nominal | Maximum | Units |
|--|---------|---------|---------|-------|
| Operating Range, differential pressure           | --      | ±0.3    | --      | PSI   |
| Output Span, note 4                              | ±1.90   | ±2.0    | ±2.10   | V     |
| Offset Voltage @ zero differential pressure      | 2.15    | 2.25    | 2.35    | V     |
| Offset Temperature Shift (-25°C to 85°C), note 2 | --      | --      | ±40     | mV    |
| Linearity, hysteresis error, note 3              | --      | --      | ±0.5    | %FSS  |
| Span Shift (-25°C to 85°C), note 2               | --      | --      | ±2      | %FSS  |

### Performance Characteristics for 0.3 PSI-G-4V-PRIME

| Parameter, note 1                                | Minimum | Nominal | Maximum | Units |
|--|---------|---------|---------|-------|
| Operating Range, gage pressure                   | --      | 0.3     | --      | PSI   |
| Output Span, note 4                              | 3.90    | 4.0     | 4.10    | V     |
| Offset Voltage @ zero pressure                   | 0.15    | 0.25    | 0.35    | V     |
| Offset Temperature Shift (-25°C to 85°C), note 2 | --      | --      | ±40     | mV    |
| Linearity, hysteresis error, note 3              | --      | --      | ±0.5    | %FSS  |
| Span Shift (-25°C to 85°C), note 2               | --      | --      | ±2      | %FSS  |

### Performance Characteristics for 1 PSI-D-4V-PRIME

| Parameter, note 1                                | Minimum | Nominal | Maximum | Units |
|--|---------|---------|---------|-------|
| Operating Range, differential pressure           | --      | ±1.0    | --      | PSI   |
| Output Span, note 4                              | ±1.90   | ±2.0    | ±2.10   | V     |
| Offset Voltage @ zero differential pressure      | 2.15    | 2.25    | 2.35    | V     |
| Offset Temperature Shift (-25°C to 85°C), note 2 | --      | --      | ±40     | mV    |
| Linearity, hysteresis error, note 3              | --      | --      | ±0.5    | %FSS  |
| Span Shift (-25°C to 85°C), note 2               | --      | --      | ±1      | %FSS  |

### Performance Characteristics for: 1 PSI-G-4V-PRIME

| Parameter, NOTE 1                                | Minimum | Nominal | Maximum | Units |
|--|---------|---------|---------|-------|
| Operating Range, gage pressure                   | --      | 1.0     | --      | PSI   |
| Output Span, NOTE 4                              | 3.90    | 4.0     | 4.10    | V     |
| Offset Voltage @ zero pressure                   | 0.15    | 0.25    | 0.35    | V     |
| Offset Temperature Shift (-25°C to 85°C), note 2 | --      | --      | ±40     | mV    |
| Linearity, hysteresis error, note 3              | --      | --      | ±0.5    | %FSS  |
| Span Shift (-25°C to 85°C), note 2               | --      | --      | ±1      | %FSS  |

### Performance Characteristics for: 5 PSI-D-4V-PRIME

| Parameter, NOTE 1                                | Minimum | Nominal | Maximum | Units |
|--|---------|---------|---------|-------|
| Operating Range, differential pressure           | --      | ±5.0    | --      | PSI   |
| Output Span, NOTE 4                              | ±1.90   | ±2.0    | ±2.10   | V     |
| Offset Voltage @ zero differential pressure      | 2.15    | 2.25    | 2.35    | V     |
| Offset Temperature Shift (-25°C to 85°C), note 2 | --      | --      | ±20     | mV    |
| Linearity, hysteresis error, note 3              | --      | --      | ±0.5    | %FSS  |
| Span Shift (-25°C to 85°C), note 2               | --      | --      | ±1      | %FSS  |



### Performance Characteristics for: 5 PSI-G-4V-PRIME

| Parameter, NOTE 1                                | Minimum | Nominal | Maximum | Units |
|--|---------|---------|---------|-------|
| Operating Range, gage pressure                   | --      | 5.0     | --      | PSI   |
| Output Span, NOTE 4                              | 3.90    | 4.0     | 4.10    | V     |
| Offset Voltage @ zero pressure                   | 0.15    | 0.25    | 0.35    | V     |
| Offset Temperature Shift (-25°C to 85°C), note 2 | --      | --      | ±20     | mV    |
| Linearity, hysteresis error, note 3              | --      | --      | ±0.5    | %FSS  |
| Span Shift (-25°C to 85°C), note 2               | --      | --      | ±1      | %FSS  |

### Performance Characteristics for 15 PSI-A-4V-PRIME

| Parameter, note 1                                | Minimum | Nominal | Maximum | Units |
|--|---------|---------|---------|-------|
| Operating Range, absolute pressure               | --      | 15.0    | --      | PSI   |
| Output Span, note 4                              | 3.90    | 4.0     | 4.10    | V     |
| Offset Voltage @ zero pressure                   | 0.15    | 0.25    | 0.35    | V     |
| Offset Temperature Shift (-25°C to 85°C), note 2 | --      | --      | ±20     | mV    |
| Linearity, hysteresis error, note 3              | --      | --      | ±0.5    | %FSS  |
| Span Shift (-25°C to 85°C), note 2               | --      | --      | ±1      | %FSS  |

### Performance Characteristics for 15 PSI-D-4V-PRIME

| Parameter, note 1                                | Minimum | Nominal | Maximum | Units |
|--|---------|---------|---------|-------|
| Operating Range, differential pressure           | --      | ±15.0   | --      | PSI   |
| Output Span, note 4                              | ±1.90   | ±2.0    | ±2.10   | V     |
| Offset Voltage @ zero differential pressure      | 2.15    | 2.25    | 2.35    | V     |
| Offset Temperature Shift (-25°C to 85°C), note 2 | --      | --      | ±20     | mV    |
| Linearity, hysteresis error, note 3              | --      | --      | ±0.5    | %FSS  |
| Span Shift (-25°C to 85°C), note 2               | --      | --      | ±1      | %FSS  |

### Performance Characteristics for 15 PSI-G-4V-PRIME

| Parameter, note 1                                | Minimum | Nominal | Maximum | Units |
|--|---------|---------|---------|-------|
| Operating Range, gage pressure                   | --      | 15.0    | --      | PSI   |
| Output Span, note 4                              | 3.90    | 4.0     | 4.10    | V     |
| Offset Voltage @ zero pressure                   | 0.15    | 0.25    | 0.35    | V     |
| Offset Temperature Shift (-25°C to 85°C), note 2 | --      | --      | ±20     | mV    |
| Linearity, hysteresis error, note 3              | --      | --      | ±0.5    | %FSS  |
| Span Shift (-25°C to 85°C), note 2               | --      | --      | ±1      | %FSS  |

### Performance Characteristics for 30 PSI-A-4V-PRIME

| Parameter, note 1                                | Minimum | Nominal | Maximum | Units |
|--|---------|---------|---------|-------|
| Operating Range, absolute pressure               | --      | 30.0    | --      | PSI   |
| Output Span, note 4                              | 3.90    | 4.0     | 4.10    | V     |
| Offset Voltage @ zero pressure                   | 0.15    | 0.25    | 0.35    | V     |
| Offset Temperature Shift (-25°C to 85°C), note 2 | --      | --      | ±20     | mV    |
| Linearity, hysteresis error, note 3              | --      | --      | ±0.5    | %FSS  |
| Span Shift (-25°C to 85°C), note 2               | --      | --      | ±1      | %FSS  |

### Performance Characteristics for 30 PSI-D-4V-PRIME

| Parameter, note 1                                | Minimum | Nominal | Maximum | Units |
|--|---------|---------|---------|-------|
| Operating Range, differential pressure           | --      | ±30.0   | --      | PSI   |
| Output Span, note 4                              | ±1.90   | ±2.0    | ±2.10   | V     |
| Offset Voltage @ zero differential pressure      | 2.15    | 2.25    | 2.35    | V     |
| Offset Temperature Shift (-25°C to 85°C), note 2 | --      | --      | ±20     | mV    |
| Linearity, hysteresis error, note 3              | --      | --      | ±0.5    | %FSS  |
| Span Shift (-25°C to 85°C), note 2               | --      | --      | ±1      | %FSS  |

### Performance Characteristics for 30 PSI-G-4V-PRIME

| Parameter, note 1                                | Minimum | Nominal | Maximum | Units |
|--|---------|---------|---------|-------|
| Operating Range, gage pressure                   | --      | 30.0    | --      | PSI   |
| Output Span, note 4                              | 3.90    | 4.0     | 4.10    | V     |
| Offset Voltage @ zero pressure                   | 0.15    | 0.25    | 0.35    | V     |
| Offset Temperature Shift (-25°C to 85°C), note 2 | --      | --      | ±20     | mV    |
| Linearity, hysteresis error, note 3              | --      | --      | ±0.5    | %FSS  |
| Span Shift (-25°C to 85°C), note 2               | --      | --      | ±1      | %FSS  |

### Performance Characteristics for 100 PSI-A-4V-PRIME

| Parameter, note 1                                | Minimum | Nominal | Maximum | Units |
|--|---------|---------|---------|-------|
| Operating Range, absolute pressure               | --      | 100.0   | --      | PSI   |
| Output Span, note 4                              | 3.90    | 4.0     | 4.10    | V     |
| Offset Voltage @ zero pressure                   | 0.15    | 0.25    | 0.35    | V     |
| Offset Temperature Shift (-25°C to 85°C), note 2 | --      | --      | ±20     | mV    |
| Linearity, hysteresis error, note 3              | --      | --      | ±0.5    | %FSS  |
| Span Shift (-25°C to 85°C), note 2               | --      | --      | ±1      | %FSS  |



## Performance Characteristics for 100 PSI-D-4V-PRIME

| Parameter, note 1                                | Minimum | Nominal | Maximum | Units |
|--|---------|---------|---------|-------|
| Operating Range, differential pressure           | --      | 100     | --      | PSI   |
| Output Span, note 4                              | ±1.90   | ±2.0    | ±2.10   | V     |
| Offset Voltage @ zero differential pressure      | 0.15    | 0.25    | 0.35    | V     |
| Offset Temperature Shift (-25°C to 85°C), note 2 | --      | --      | ±20     | mV    |
| Linearity, hysteresis error, note 3              | --      | --      | ±0.5    | %FSS  |
| Span Shift (-25°C to 85°C), note 2               | --      | --      | ±1      | %FSS  |

## Performance Characteristics for 100 PSI-G-4V-PRIME

| Parameter, note 1                                | Minimum | Nominal | Maximum | Units |
|--|---------|---------|---------|-------|
| Operating Range, gage pressure                   | --      | 100     | --      | PSI   |
| Output Span, note 4                              | 3.90    | 4.0     | 4.10    | V     |
| Offset Voltage @ zero pressure                   | 0.15    | 0.25    | 0.35    | V     |
| Offset Temperature Shift (-25°C to 85°C), note 2 | --      | --      | ±20     | mV    |
| Linearity, hysteresis error, note 3              | --      | --      | ±0.5    | %FSS  |
| Span Shift (-25°C to 85°C), note 2               | --      | --      | ±1      | %FSS  |

**Pressure Response: for any pressure applied the response time to get to 90% of pressure applied is typically less than 500 useconds.**

### Specification Notes

NOTE 1: ALL PARAMETERS ARE MEASURED AT 5.0 VOLT EXCITATION, FOR THE NOMINAL FULL SCALE PRESSURE AND ROOM TEMPERATURE UNLESS OTHERWISE SPECIFIED. PRESSURE MEASUREMENTS ARE WITH POSITIVE PRESSURE APPLIED TO PORT B. ABSOLUTE DEVICES REQUIRE PRESSURE TO BE APPLIED TO PORT A.

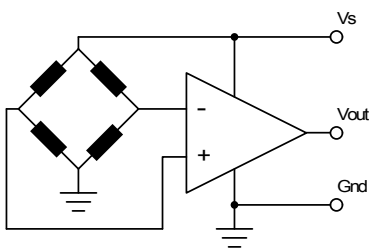
NOTE 2: SHIFT IS RELATIVE TO 25°C.

NOTE 3: MEASURED AT ONE-HALF FULL SCALE RATED PRESSURE USING BEST STRAIGHT LINE CURVE FIT.

NOTE 4: THE SPAN IS THE ALGEBRAIC DIFFERENCE BETWEEN FULL SCALE OUTPUT VOLTAGE AND THE OFFSET VOLTAGE

All Sensors reserves the right to make changes to any products herein. All Sensors does not assume any liability arising out of the application or use of any product or circuit described herein, neither does it convey any license under its patent rights nor the rights of others.

## Equivalent Circuit



## X-ON Electronics

Largest Supplier of Electrical and Electronic Components

*Click to view similar products for [Board Mount Pressure Sensors](#) category:*

*Click to view products by [Amphenol](#) manufacturer:*

Other Similar products are found below :

[6407-249V-17343P](#) [6407-250V-09273P](#) [80527-25.0H2-05](#) [80541-B00000150-01](#) [80541-B00000200-05](#) [80554-00700100-05](#) [80568-00300050-01](#) [93.631.4253.0](#) [93.731.4353.0](#) [93.932.4553.0](#) [136PC150G2](#) [136PC15A1](#) [142PC95AW71](#) [142PC05DW70](#) [15PSI-G-4V](#) [1805-01A-L0N-B](#) [26PCBKT](#) [26PCCFA6D26](#) [26PCCFS2G](#) [26PCCVA6D](#) [93.632.7353.0](#) [93.731.3653.0](#) [93.931.4853.0](#) [93.932.4853.0](#) [SCDA120-XSC05DC](#) [185PC30DH](#) [20INCH-G-MV-MINI](#) [26PCAFJ3G](#) [26PCCEP5G24](#) [26PCDFA3G](#) [26PCJEU5G19](#) [ASCX15AN-90](#) [TSCSAAN001PDUCV](#) [DCAL401DN](#) [DCAL401GN](#) [XZ202798SSC](#) [XZ203676HSC](#) [6407-249V-09343P](#) [6407-250V-17343P](#) [SP370-25-116-0](#) [81794-B00001200-01](#) [HSCDLNN100PGAA5](#) [82681-B00000100-01](#) [81618-B00000040-05](#) [SSCDJNN015PAAA5](#) [TSCDLNN100MDUCV](#) [TSCSAAN100PDUCV](#) [NBPDANN015PGUNV](#) [NBPLLNS150PGUNV](#) [142PC100D](#)