

| BASE NUMBER | A DIA          | B DIA        | C            | D            | E            | F ±.005 | G            | H MAX | J DIA        | L                       | REL COM                |
|-------------|----------------|--------------|--------------|--------------|--------------|---------|--------------|-------|--------------|-------------------------|------------------------|
| 10-101151-6 | .1640<br>.1571 | .270<br>.250 | .054<br>.045 | .156<br>.133 | .113<br>.102 | .031    | .071<br>.054 | .080  | .258<br>.243 | +0.00<br>-.031<br>375   | 31115-3<br>22380-375   |
| -14         |                |              |              |              |              |         |              |       |              | +0.00<br>-.031<br>875   | 31115-3<br>22380-376   |
| -16         |                |              |              |              |              |         |              |       |              | +0.00<br>-.062<br>1000  | 31115-3<br>22380-377   |
| -18         |                |              |              |              |              |         |              |       |              | +0.00<br>-.062<br>1125  | 31115-3<br>22380-378   |
| -7          |                |              |              |              |              |         |              |       |              | +0.00<br>-.031<br>438   | 31525-359<br>22446-345 |
| -8          |                |              |              |              |              |         |              |       |              | +0.00<br>-.031<br>500   | 31525-438<br>22446-408 |
| -9          |                |              |              |              |              |         |              |       |              | +0.00<br>-.031<br>562   | 32525-67<br>22531-9    |
| -12         |                |              |              |              |              |         |              |       |              | +0.00<br>-.031<br>750   | 38524-<br>1325         |
| -24         |                |              |              |              |              |         |              |       |              | +0.00<br>-.031<br>1500  |                        |
| -19         |                |              |              |              |              |         |              |       |              | 1.188<br>+.000<br>-.062 |                        |
| -22         |                |              |              |              |              |         |              |       |              | 1.375<br>+.000<br>-.062 |                        |
| -20         |                |              |              |              |              |         |              |       |              | +0.00<br>-.062<br>1250  |                        |



- LOCKWASHER SHALL BE MADE FROM PHOSPHOR BRONZE PER ASTM B103, C51000, H08 OR ASTM B159, C51000, H08 OR TIN BRASS PER ASTM B591, C42500, H10; OR BILION BRONZE PER ASTM B99, C65100; H04 HARDNESS ROCKWELL B90 MINIMUM AND SHALL HAVE SAME FINISH AS SCREW.
- SCREW SHALL BE MADE OF BRASS AND MEET THE REQUIREMENTS OF FEDERAL SPEC QQ-W-321, COMP. 260, 270 OR 274 WITH EIGHTH OR QUARTER HARD TEMPER.
- TO COMPLETE BASE NO., ADD APPLICABLE LAST DIGIT SUFFIX NO. FOR DESIRED FINISH:

NICKEL PLATE 9-885 SUFFIX-8  
 CADMIUM PLATE CHROMATE 9-3026 SUFFIX-1  
 BLACK OXIDE 9-4260 SUFFIX-2  
 CADMIUM PLATE OLIVE DRAB 9-2929 SUFFIX-3  
 CADMIUM PLATE NICKEL BASE 9-4431 SUFFIX-XX7  
 CHROME PLATE PER AMS 2406  
 (.00002-.00005 THK) OVER  
 NICKEL PLATE 9-885 (.0001-.0003 THK) SUFFIX-XXE  
 OLIVE-GREEN ZINC ALLOY PLATE 9-2281 SUFFIX-XXU  
 CADMIUM PLATE, BLACK FINISH 9-2827 SUFFIX-XXV  
 BLACK ZINC ALLOY PLATE 9-2530 SUFFIX-XXY  
 BLACK ZINC ALLOY CONDUCTIVE PLATE 9-2530-1 SUFFIX-XXX

**PURCHASED**

**CAN BE MADE FROM 10-101151B**

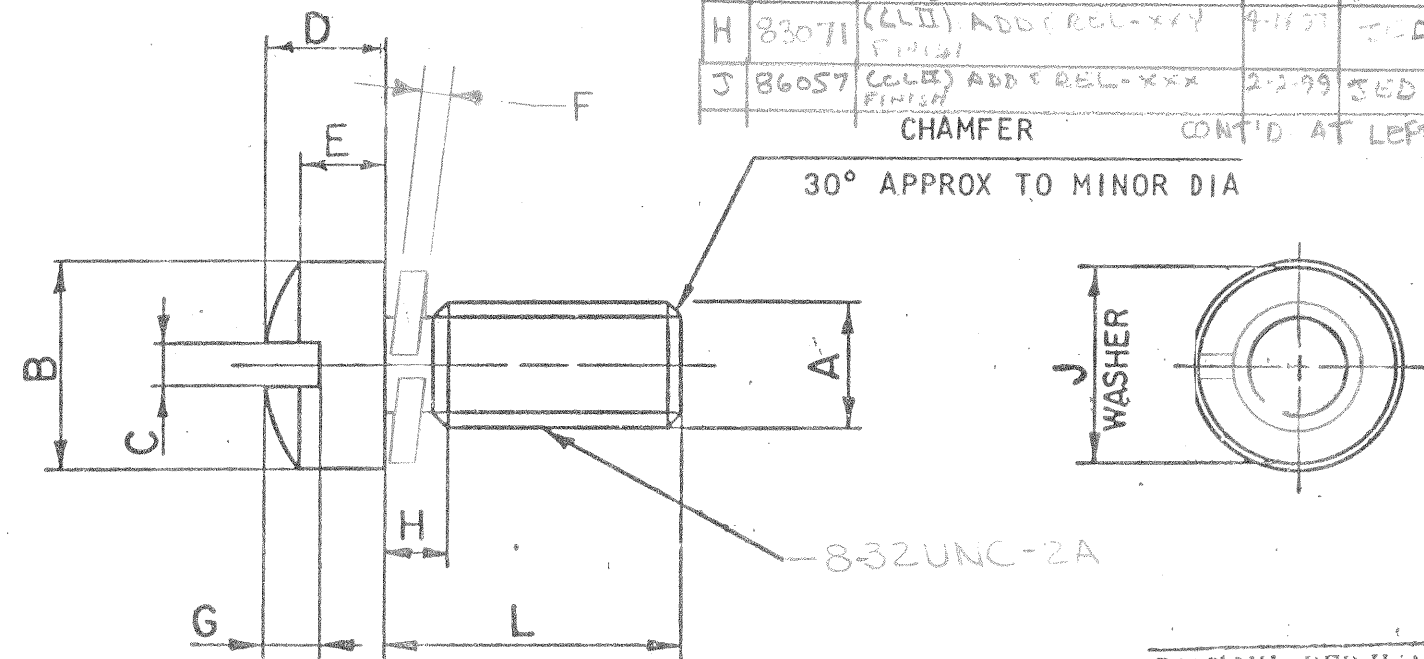
|                                      |                            |
|--------------------------------------|----------------------------|
| MATERIAL SPEC.<br>SEE<br>NOTES 2 & 3 | PROCESS SPEC.              |
| HEAT TREAT. SPEC.                    | FINISH SPEC.<br>SEE NOTE 1 |
| TOOL ACC.                            | COM. REQ. 22380            |

|   |         |         |        |           |          |          |
|---|---------|---------|--------|-----------|----------|----------|
| <b>SCINTILLA MAGNETO DIVISION</b><br>BENDIX AVIATION CORPORATION<br>SIDNEY, N. Y., U. S. A. |         |         |        |           |          |          |
| NAME<br>SCREW, ASSEMBLED WASHER,<br>8-32 X L  |         |         |        |           |          |          |
| D'MAN   | CHECKER | MAT.    | STDS   | CH. D'MAN | APPROVER | SCALE    |
| MILLER  | Powell  | CP      | Bibaun | Lord      | Winters  | NO SCALE |
| 4-25-55   | 6-16-55 | 5-16-55 |        | 6-17-55   | 6-17     |          |

|  |                                 |             |
|--|---------------------------------|-------------|
| TOLERANCES UNLESS OTHERWISE SPECIFIED  |                                 |             |
| FRACTIONS ± 1/32   | DECIMALS ± 0.10                 | ANGLES ± 2° |
| CONCENTRICITY 0.15 FIR.  | BREAK SHARP EDGES 0.10-0.09     |             |
| EQUIDISTANT SURFACES MUST BE PERPENDICULAR AND PARALLEL WITHIN THE TOLERANCE OF THE APPLICABLE DIMENSION AND SMOOTH WITHIN 200 MICR. FINCHES RMS |                                 |             |
| NEXT ASSEMBLY  | 10-35901, 10-37103;<br>10-37271 | WEIGHT-LBS. |
| SUPERSEDED AND IS NOT INTERCHANGEABLE  |                                 |             |
| SUPERSEDED BY  |                                 | 10-101151   |
| REF. 10-91441<br>10-35936  |                                 |             |

**10-101151**

| REV | DESCRIPTION                    | DATE   | APPD.   | REL 31115-3 | WAS  | DATE    | D'MAN    | APPD.   |
|-----|--------------------------------|--------|---------|-------------|--|---------|----------|---------|
| K   | (CLII) ADDED -20<br>ECN: 86237 | 3-2-99 | PAULSON |             | FOR CHGS 1 THRU A3<br>SEE RECORD DWG   |         |          |         |
| A4  | 53711-2                        |        |         |             | 8-32 UNC-2A; REV NOTE 6-1-72   | 6-1-72  | Paulson  | Hayes   |
| B   | 70192-2                        |        |         |             | (CL II) WAS: .018<br>(F ± .005 COL), .288/<br>.278 (J DIA COL);<br>REV NOTE 3; CHGD<br>PICT. | 7/9/79  | Lodovico | Island  |
| C   | 25154                          |        |         |             | (CLII) SEE CHG. NOTICE   | 6/4/79  | WASBURN  | Paulson |
| D   | 25600                          |        |         |             | (CLII) REV NOTE 3  | 7-30-79 | PAULSON  | ON      |
| E   | 27371                          |        |         |             | (CLII) REV'D NOTE 3  | 6/10/93 | RSP      | 9-99    |
| F   | 81127                          |        |         |             | (CLII) ADD REL-XXU<br>FINISH   | 12-2-57 | JED      | JED     |
| G   | 81355                          |        |         |             | (CLII) ADD REL-XXV<br>FINISH   | 2-2-76  | JM       | JM      |
| H   | 83071                          |        |         |             | (CLII) ADD REL-XXY<br>FINISH   | 4-11-57 | JED      | JED     |
| J   | 86057                          |        |         |             | (CLII) ADD REL-XXX<br>FINISH   | 2-2-99  | JED      | JED     |



PART NUMBER USAGE RESTRICTED TO ELECTRICAL CONNECTOR DESIGN GROUP

USE OF THIS DOCUMENT IS UNLIMITED. DOCUMENTS REFERENCED HEREON CONTAIN LIMITED RIGHTS DATA.

## X-ON Electronics

Largest Supplier of Electrical and Electronic Components

*Click to view similar products for* [Circular MIL Spec Tools, Hardware & Accessories](#) *category:*

*Click to view products by* [Amphenol](#) *manufacturer:*

Other Similar products are found below :

[0113-201-2025](#) [600-079-06](#) [600-146-06](#) [M10-101982-143](#) [M10-101982-163](#) [M10-101983-183](#) [M10-150912-083](#) [M10-454396-008](#)  
[602GB18808](#) [CS3102A-22-14PW](#) [M2887615-CD](#) [627-009](#) [M38999/9-19B](#) [630A007NF083A](#) [630B007M051A](#) [630BJ003NF032H](#) [637-](#)  
[149NF04B](#) [M39029/29-215](#) [6408-203V-09273](#) [6426-201-11343](#) [650FS002NF16](#) [660-008NF14S7-01](#) [660-009M22H8-03](#) [660-013NF19U6-](#)  
[210](#) [660-015M10S6-17](#) [660-015NF10S5-01](#) [660-015NF14R3.5-01](#) [660-023NF19H6-19](#) [660-024NF11S12-01](#) [660-024NF11S3-01](#) [660-](#)  
[024NF17S4-109](#) [660-050XM17F4-01](#) [660-068NF25R6-30G](#) [660-070M23S8-04](#) [660-073MTCH9-20](#) [M83723/61-18W](#) [M83723/61-218R](#)  
[M83723/61-224W](#) [667-084-23C](#) [667-084-35C](#) [667-224NF16](#) [687-697NF-1](#) [M85049/94-10-A](#) [M85049/96-7-A](#) [M855282-10A01A](#)  
[M85528/2-10B](#) [M855282-18A01A](#) [M85528/2-22A01A](#) [M85528/2-22AA](#) [710HS460NF2508](#)