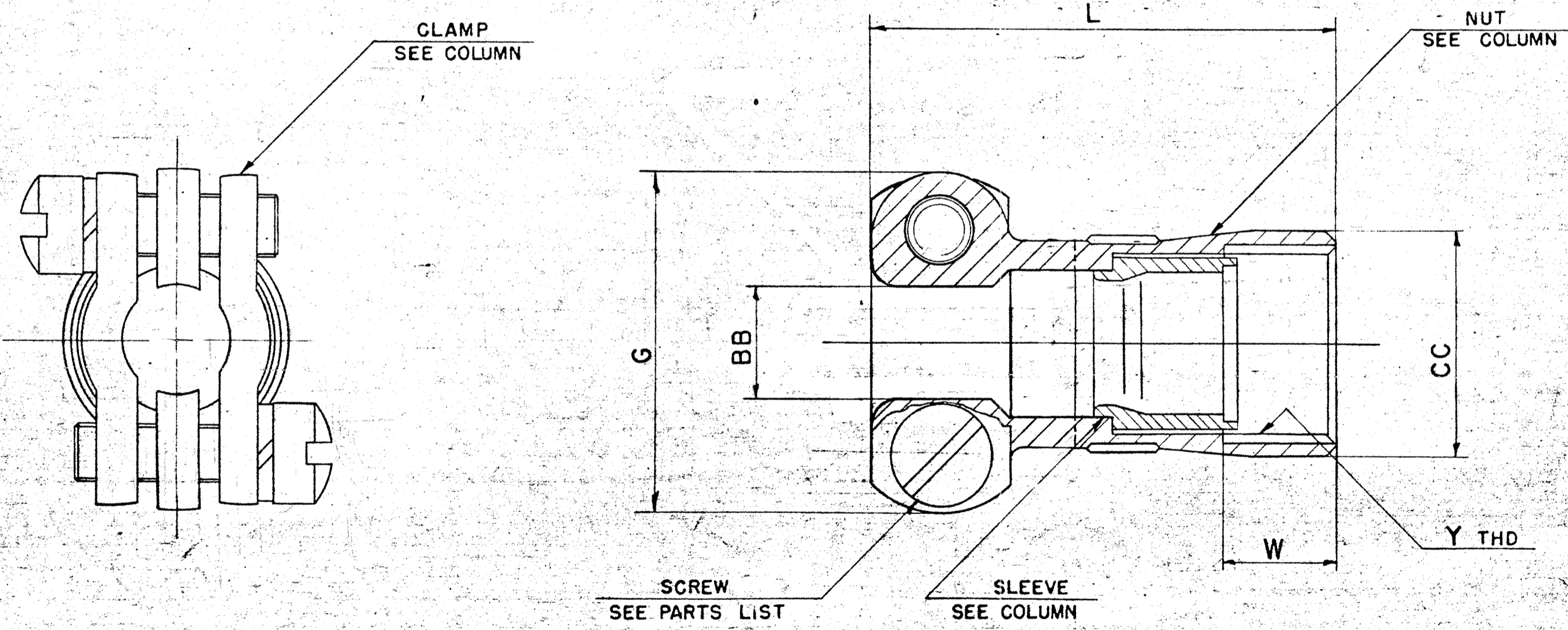


ASSEMBLY NUMBER	DETAILS				G MAX	L MAX	BB DIA +.000 -.010	CC DIA	Y THREAD REF SIZE CLASS 2B	W +.062 -.031	SCREW SIZE	WT-LB	RELEASE
	NUT	SLEEVE	CLAMP										
			PART NUMBER	QTY									
10-101984-8	10-101982-8	10-454396-8	10-130511-8	2	.775	1.190	.250	.540	.4375-28UNEF	.250	6-32NC		33788-4
-10	-10	-10	-10		.837		.312	.665	.5625-24UNEF				
-12	-12	-12	-12		.963		.438	.793	.6875-24UNEF				
-14	-14	-14	-14		1.087		.562	.910	.8125-20UNEF				
-16	-16	-16	-16		1.150	1.292	.624	1.037	.9375-20UNEF				
-18	-18	-18	-18		1.400	1.292	.750	1.155	1.0625-18UNEF		8-32NC		
-20	-20	-20	-18		1.400	1.332	.750	1.281	1.1875-18UNEF	.344			
-22	-22	-22	-20		1.587	1.332	.938	1.408	1.3125-18UNEF	.344			
-24	-24	-24	-22		1.681	1.332	1.000	1.533	1.4375-18UNEF	.344			35524-406

REV	DATE	BY	DESCRIPTION
1	4-1-59	BARTON	ADD. & REL. SIZE 24 & DATA
2	6-23-59	WELLES	REV DATA FOR -24
3	7-24-62	WELLES	ADD. & REL. -XX0 FINISH
A1	9-36-64	HANN	(MFG) ADD & REL -XX7 & -XX8 FINISHES
A2	7-5-72	HANN	REV SLEEVE COL
A3	4-17-73	HANN	ADD & REL -XX9, -XXE, -XXG
B	7-12-77	WELLES	(MFG) REV Y THD COL.
C	2-12-79	JED	(CLIT) REV L COL.
D	9-7-95	JED	(CLIT) ADD & REL -XXY FINISH & DATA
E	9-16-98	JED	(CLIT) ADDED & RELEASE -XXY & DATA



10-101984

NOTES: REF SYMBOL

1. TO COMPLETE ASSEMBLY NO. AND DETAIL NO., ADD APPLICABLE LAST CHARACTER SUFFIX NO. FOR DESIRED FINISH.

- |                                     |             |
|-------------------------------------|-------------|
| CHROMATE TREATED                    | SUFFIX -XX0 |
| BRIGHT CADMIUM PLATE                | SUFFIX -XX1 |
| BLACK ANODIZE                       | SUFFIX -XX2 |
| CADMIUM PLATE OLIVE DRAB            | SUFFIX -XX3 |
| GREY ANODIZE                        | SUFFIX -XX4 |
| ANODIC COATING                      | SUFFIX -XX5 |
| CADMIUM PLATE NICKEL BASE           | SUFFIX -XX7 |
| BRIGHT NICKEL                       | SUFFIX -XX8 |
| OLIVE DRAB, CAD. PLATE, NICKEL BASE | SUFFIX -XX9 |
| CHROME PLATE                        | SUFFIX -XXE |
| NICKEL ALLOY PLATE                  | SUFFIX -XXG |
| BLACK ZINC ALLOY PLATE              | SUFFIX -XXY |
| BLACK ZINC ALLOY CONDUCTIVE PLATE   | SUFFIX -XXX |

RELEASE  
35524-1255  
~~33788-4~~  
52524-1407  
54524-368

USE OF THIS DOCUMENT IS UNLIMITED. DOCUMENTS REFERENCED HEREON CONTAIN LIMITED RIGHTS DATA.

MATERIAL SPEC.		PROCESS SPEC.		SCINTILLA MAGNETO DIVISION BENDIX AVIATION CORPORATION SIDNEY, N. Y., U.S.A.			
HEAT TREAT SPEC.		FINISH SPEC. SEE NOTE 1		NAME CLAMP ASSEMBLY, CABLE STRAIN RELIEF, ELECTRICAL CONNECTOR, TYPE PC( )E			
TOOL ACC.		COM. REC.		D'MAN E. GEORGE	CHECKER W. BARTON	MAT. 1-16-57	ST'DS 1-16-57
				CH. D'MAN 1-16-57	APPROVED W. BARTON	SCALE NONE	COPY/REVISED BY 10-101971
				NEXT ASSEMBLY NO. 10-142706/50			
				SEE COL			
				10-101984			
				CODE 77820			

Scanned

## X-ON Electronics

Largest Supplier of Electrical and Electronic Components

*Click to view similar products for [Circular MIL Spec Strain Reliefs & Adapters](#) category:*

*Click to view products by [Amphenol](#) manufacturer:*

Other Similar products are found below :

[896227-000](#) [899170S004](#) [6000-063-0022](#) [613751-000](#) [CS6624-000](#) [620AB038Z136](#) [620AS001Z108](#) [620AS038Z112](#) [620AS038Z120](#)  
[620AS038Z132](#) [620FB038NF08](#) [620HA038NF13](#) [620HA038NF25](#) [620HA042XM13](#) [620HB049NF17](#) [620HS011NF21](#) [620HS038NF11](#)  
[620HS038Z121](#) [620HS042XM19](#) [620HS042XM25](#) [620HS042XW13](#) [620HS048B17](#) [620MS064NF09](#) [620MS064NF12](#) [620MS065M12](#)  
[620MS065Z107](#) [620MS065ZNU06](#) [630J041M06H](#) [630J041M20H](#) [637S010NF0212H](#) [640830-000](#) [659943-000](#) [66241-10A](#) [CW0597-000](#)  
[CW0598-000](#) [CW0948-000](#) [CY0122-000](#) [M85049/41-6A W/B](#) [M85049/42-12DS](#) [M85049/47N8](#) [M85049/47W18](#) [M85049/51-1-14S](#)  
[M85049/51-1-8W](#) [M85049/51S16S](#) [M85049/60-1N16](#) [M85049/60-2G12W](#) [M85049/69-11N](#) [CZ3661-000](#) [D02922-000](#) [70.360.1628.0](#)