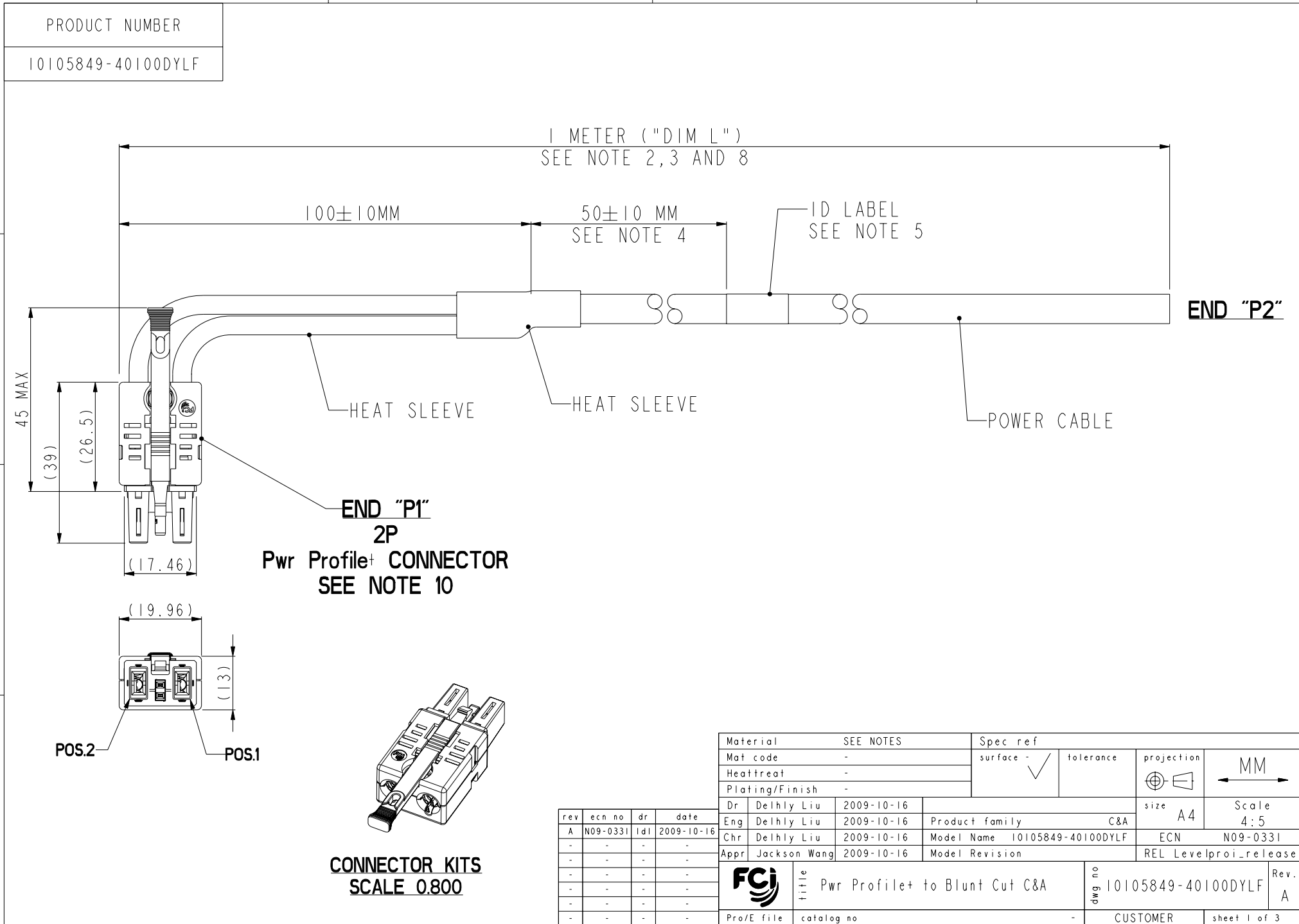




This document is the property of and embodies CONFIDENTIAL and PROPRIETARY information of FCI. No part of the information shown on this document may be used in any way or disclosed to others without the written consent of FCI. Copyright FCI.



PRODUCT NUMBER
10105849-40100DYLf

1 METER ("DIM L")
SEE NOTE 2, 3 AND 8

100±10MM

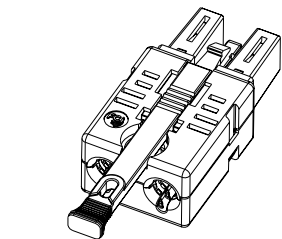
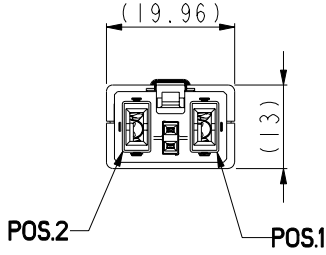
50±10 MM
SEE NOTE 4

ID LABEL
SEE NOTE 5

END "P2"

END "P1"
2P

Pwr Profile+ CONNECTOR
SEE NOTE 10



CONNECTOR KITS
SCALE 0.800

| rev | ecn no | dr | date |
|-----|----------|-----|------------|
| A | N09-0331 | ldl | 2009-10-16 |
| - | - | - | - |
| - | - | - | - |
| - | - | - | - |
| - | - | - | - |

| | | | | | |
|----------------|--------------|------------|----------------|-------------------------------|-----------------------|
| Material | SEE NOTES | Spec ref | | | |
| Mat code | - | surface | - | tolerance | projection |
| Heat treat | - | | ✓ | | MM |
| Plating/Finish | - | | | | ←→ |
| Dr | Delhly Liu | 2009-10-16 | size | A4 | Scale |
| Eng | Delhly Liu | 2009-10-16 | Product family | C&A | 4:5 |
| Chr | Delhly Liu | 2009-10-16 | Model Name | 10105849-40100DYLf | ECN |
| Appr | Jackson Wang | 2009-10-16 | Model Revision | | REL Levelproi_release |
| FCI | | | title | Pwr Profile+ to Blunt Cut C&A | Rev. |
| Pro/E file | catalog no | | dwg no | 10105849-40100DYLf | A |
| | | | CUSTOMER | sheet 1 of 3 | |

REV F: 2006-04-17



FCI CONFIDENTIAL

This document is the property of and embodies CONFIDENTIAL and PROPRIETARY information of FCI. No part of the information shown on this document may be used in any way or disclosed to others without the written consent of FCI. Copyright FCI.

PRODUCT NUMBER

10089863-101LF

NOTES:

- ①. END "PI" MATES WITH FCI HEADER PART NUMBER: 10089870 (W/O GROUNDING SHIELD)
OR 10089872 (W/GROUNDING SHIELD)
- ②. UNLESS OTHERWISE SPECIFIED ASSEMBLED LENGTH TOLERANCE =
 - < = 1 METER: ±15.0mm
 - > 1 METER TO 10 METER: ±2% OF "DIM L"
 - > 10 METER: +0.00% / -4% OF "DIM L"
- ③. PART NUMBER DESCRIPTION:

BASE NUMBER **DASH NUMBER**

1 0 1 0 5 8 4 9 - 4 0 1 0 0 D Y L F

POWER WIRE SIZE

| | WIRE SIZE (mm ²) |
|---|------------------------------|
| 4 | 6 mm ² |

* COLOR: BLACK, UNLESS OTHERWISE SPECIFIED

LEAD FREE (SEE NOTE 9)

Y: NOT APPLICABLE TO THIS ASSEMBLY

| | SIGNAL CONTACT TYPE | SIGNAL WIRE SIZE |
|---|-----------------------|------------------|
| D | SIGNAL JUMPER CONTACT | NONE |

LENGTH (DIM L)
 XXXX: XX METERS, XX CENTIMETERS
 0100: 01 METERS, 00 CENTIMETERS

REV F: 2006-04-17

| | | | | | | |
|------------|------------|-------------------------------|----------|---------------------|------|---|
| | title | Pwr Profile+ to Blunt Cut C&A | dwg no | 10105849-40100DYL F | Rev. | A |
| Pro/E file | catalog no | - | CUSTOMER | sheet 2 of 3 | | |

PDM: Rev:A

STATUS: Released

4 Printed: Nov 03, 2009



FCI CONFIDENTIAL

This document is the property of and embodies CONFIDENTIAL and PROPRIETARY information of FCI. No part of the information shown on this document may be used in any way or disclosed to others without the written consent of FCI. Copyright FCI.

PRODUCT NUMBER

10105849-40100DYLf

NOTES CONTINUED:

- 4. UNLESS OTHERWISE SPECIFIED LABEL POSITION SHALL BE 50mm FROM CABLE CUT END OF ENDED PI.
- 5. UNLESS OTHERWISE SPECIFIED STANDARD LABEL DETAILS SHALL BE:
 - MANUFACTURER CODE OR NAME
 - FCI P/N
 - REVISION
 - DATE CODE WW/YY FORMAT
 - COUNTRY ORIGIN
 FONT SHALL BE CLEARLY VISABLE AND BLACK IN COLOR.
- 6. ALL CABLE ASSEMBLIES SHALL BE TESTED 100% FOR CONTINUITY AS DEFINED IN WIRING LIST.
- 7. UNLESS OTHERWISE SPECIFIED ALL CABLE ASSEMBLIES SHALL BE 100% HI-POT TESTED BY APPLYING 300V DC FOR MINIMUM OF 10ms, UNLESS ACTIVE COMPONENTS ARE USED IN THIS ASSEMBLY.
- 8. THIS DIMENSION IS A FINISHED PRODUCT LENGTH.
- 9. LEAD FREE PRODUCTS MEET EUROPEAN UNION DIRECTIVES AND OTHER COUNTRY REGULATIONS AS DESCRIBED IN GS-22-008.
- 10. CONNECTOR ASSEMBLIES SHOWN ARE FOR REFERENCE ONLY AND MAY NOT SHOW ALL PART DETAIL.
- 11. PACKAGING SPECIFICATION AS PER: GS-14-1445 AND GS-14-1490.
- 12. MATERIALS:
 - CABLE: UL APPROVED, TEMPERATURE RATING 105°C, 120V MIN.
 - HOUSING: PPA, UL94V-0 GLASS FILLED, COLOR: BLACK
 - POWER CONTACTS: COPPER ALLOY WITH CRIMPING TYPE
 - SIGNAL CONTACTS: COPPER ALLOY
- 13. A "△" SYMBOL WILL BE NEXT TO ANY DIMENSION, VIEW, OR NOTE WHICH HAD BEEN MODIFIED WITH THE CURRENT DRAWING REVISION.

REV F: 2006-04-17

| | | | | | | |
|------------|------------|-------------------------------|----------|--------------------|------|---|
| | title | Pwr Profile+ to Blunt Cut C&A | dwg no | 10105849-40100DYLf | Rev. | A |
| Pro/E file | catalog no | - | CUSTOMER | sheet 3 of 3 | | |

X-ON Electronics

Largest Supplier of Electrical and Electronic Components

Click to view similar products for [Specialised Cables](#) category:

Click to view products by [Amphenol](#) manufacturer:

Other Similar products are found below :

[604SS6](#) [910640](#) [96CB-L2020PIB2](#) [1200740077](#) [1200740114](#) [AC172](#) [ACL-SSI-4](#) [R88ACRGD0R3C](#) [1300150047](#) [1300660036](#) [1302262116](#)
[1300150079](#) [1300220020](#) [1300220119](#) [1301240492](#) [1365323-1](#) [1589946-2](#) [176P12](#) [1971465-2](#) [20240400003](#) [20886510030](#) [2-22733-8](#)
[22733-8](#) [CB-BATACC-RS](#) [CB-JST3PSW-RS](#) [25AU25](#) [3011-03](#) [SSL009PC2DC012N](#) [SSM005PC0DY012Q](#) [CCS-FCB-5](#) [CCSF2CBF2](#)
[416216000-3](#) [426122200-3](#) [AXXCBL650HDHD](#) [5057-1AC](#) [VMMP6R](#) [426055800-3](#) [426101100-3](#) [05AD05X](#) [10075358-F0200YYLF](#)
[1052015-1-10](#) [540012](#) [RTPADPTR02](#) [603ST2](#) [603ST6](#) [604PS2](#) [604PS5](#) [604ST5](#) [636083-1](#) [CB-870EC-RS](#)