

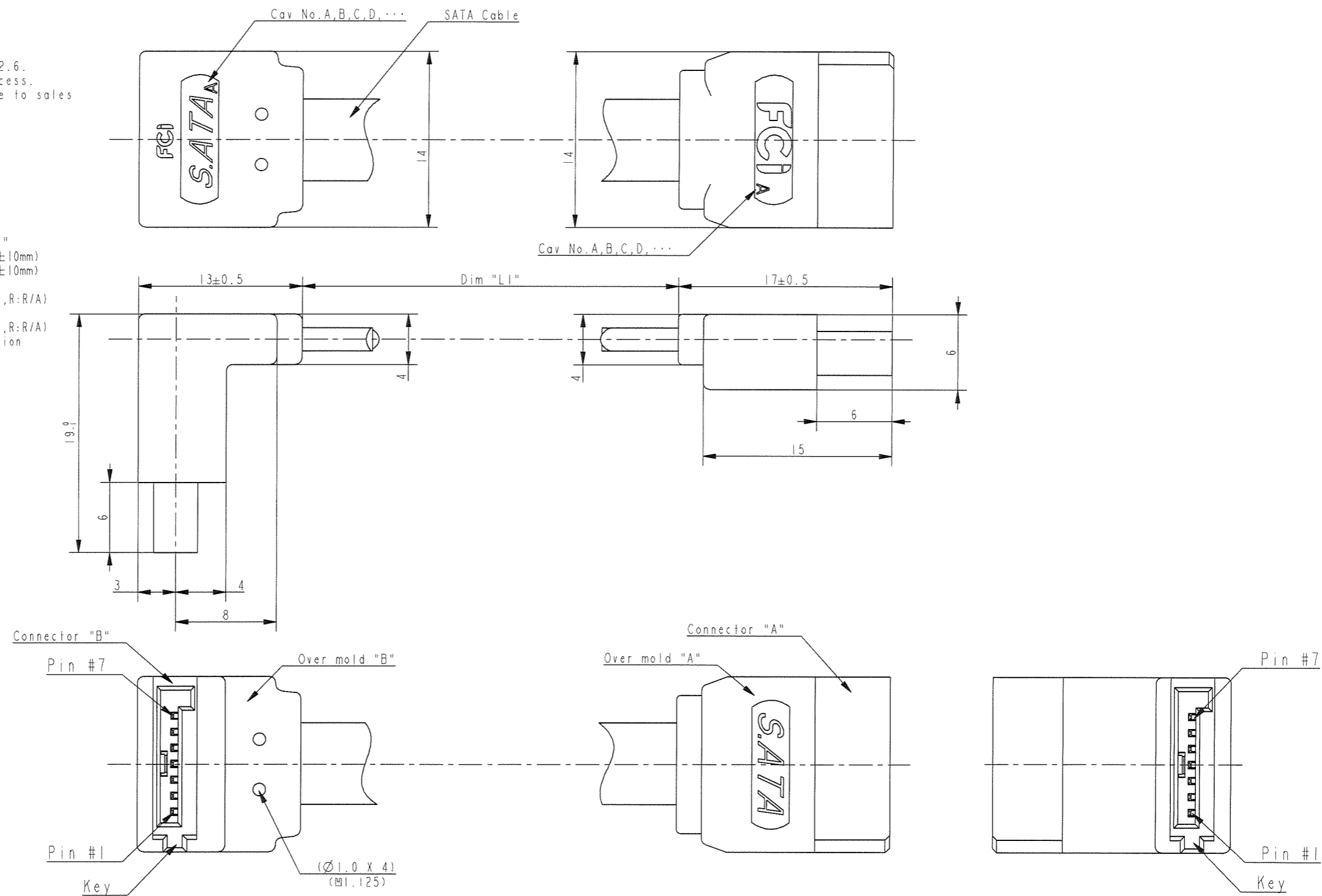
1	2	3	4	5	6	7	8
Product NO.	Dim "L1"	Connector "A" and "B"	Over mold "A" and "B"	SATA Cable	Solder		
10115007-7SR375HLF	375±10	SATA 7P Receptacle connector Straight type Housing, Back Cover: Heat resistant resin, Halogen Free, UL94V-0, Color Black Contact: Copper Alloy Contact Area: Gold plating over Ni plating	Heat resistant resin, Halogen Free, UL94V-0, Color Black	80°C 30V AWG30 Halogen Free, VW-1, with F mark, Color Black	Sn96.5-Ag3.0-Cu0.5 Lead Free		

NOTE)

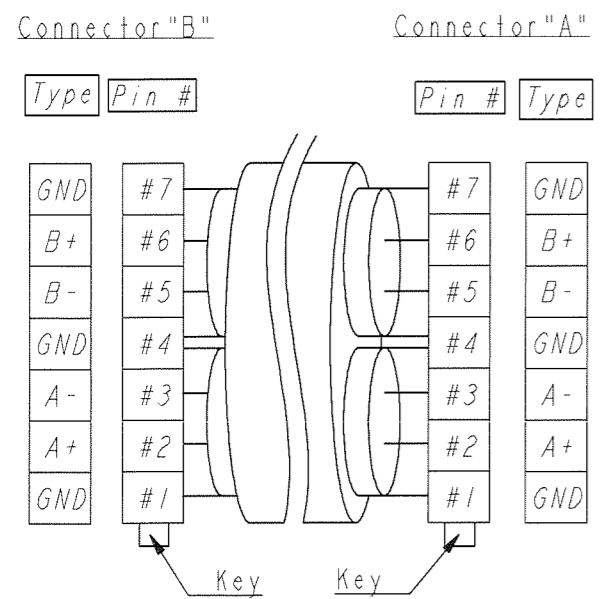
- 1) This product is based on Serial ATA Revision 2.6.
- 2) This product is manufactured by soldering process.
- 3) About the other Dim "L1" length, please inquire to sales person in our company.
- 4) Product SPEC: GS-12-672
- 5) Package SPEC: GS-14-1056
- 6) Application SPEC: GS-20-138
- 7) P/N composition

10115007 - 7 S R XXX H L F

- Lead Free
- Halogen Free
- Cable Length: Dim "L1"
(150 - 150±10mm)
(285 - 285±10mm)
- SATA Connector Type
(S: Straight, R: R/A)
- SATA Connector Type
(S: Straight, R: R/A)
- SATA Connector Position



Wiring Table:
Pin Assignment



www.fciconnect.com		surface	tolerance std	projection	MM
		ISO 1302	ISO 406 ISO 1101	⊕	←→
		TOLERANCES UNLESS OTHERWISE SPECIFIED			
Dr	T. Ishishita	2010-10-14	ANGULAR	0.X	±0.4
Eng	T. Ishishita	2010-10-14	LINEAR	0.XX	±0.4
Chr	X. Yamada	2010-10-14	0°	0.XXX	±0.4
Appr	M. Mori	2010-10-14	Product family		233F
FCI		SATA 7P Singal Cable Harness		size	A2
		RightAngle High/Straight Lowpro		Scale	N/A
catalog no		CUSTOMER		ECN	J10-0210
		sheet 1 of 1		Spec ref	
		dwg no		10115007	Rev.
					A

Copyright FCI

X-ON Electronics

Largest Supplier of Electrical and Electronic Components

Click to view similar products for [Computer Cables](#) category:

Click to view products by [Amphenol](#) manufacturer:

Other Similar products are found below :

[68809-0004](#) [8F36-AAA105-1.00](#) [IB63](#) [CB-716EB-RS](#) [CB-716P8P9-RS](#) [CBK-11-290K-00](#) [ACL-10550](#) [ACL-10568-2](#) [ACL-10568-5](#)
[427522400-3](#) [32102-021500-200-RS](#) [426091300-3](#) [48000023](#) [10114976-P015002LF](#) [88761-6101](#) [NT631C-CN321-EU](#) [ACL-10568NF-1](#)
[MIKROE-2092](#) [PCL-101100R-2E](#) [1700009405](#) [PS/2 Cable](#) [NT31C-CN323-EU](#) [FWAX-PK1-51](#) [PCL-10168H-1E](#) [68801-1905](#) [111068-1015](#)
[100436-1107](#) [68801-0630](#) [68801-3612](#) [68801-3618](#) [205058-1002](#) [PS2NK](#) [SATA cable](#) [96021-0000-00-0](#) [FAK-SMZSMZ 5M](#) [FAK-](#)
[SMZSMZ-3M](#) [ACC-500-200-R](#) [iW-C40-PCIe08-C1](#) [1700001531](#) [96048-0000-00-0](#) [SATA III cable 30cm, down/straight](#) [cab-Pico-ITX-](#)
[LVDS](#) [PCL-101100SB-2E](#) [AXXSTCBLQAT](#) [NT31C-KBA05](#) [PCL-101100M-2E](#) [A2U4PSWCXCXK1](#) [2 port SATA to 5 pin,L=200mm](#)
[ACL-10568NF-2](#) [C-PS2WG/5](#)