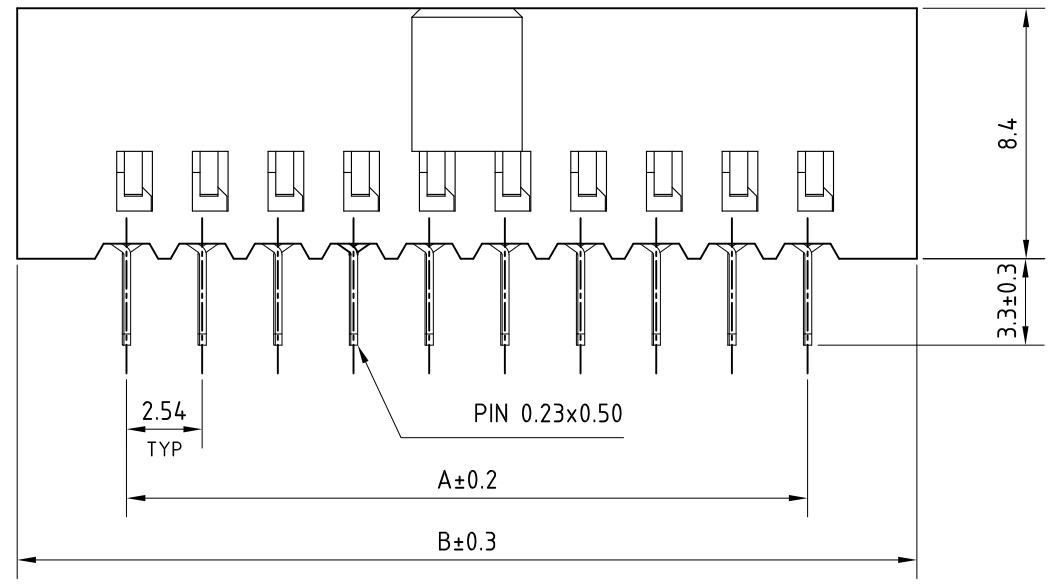
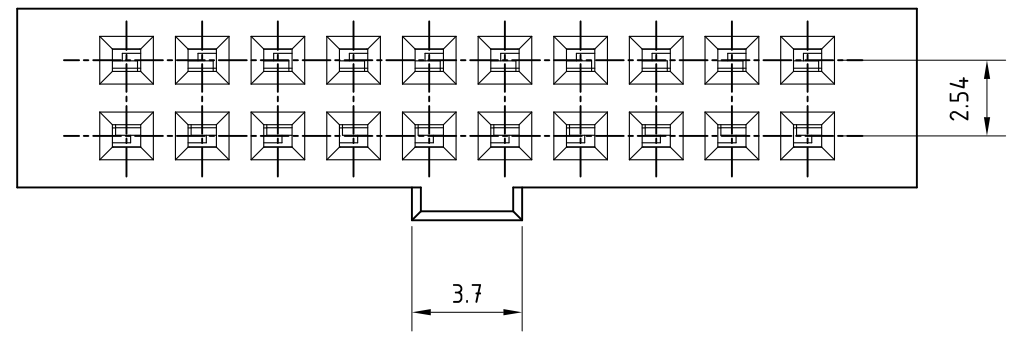




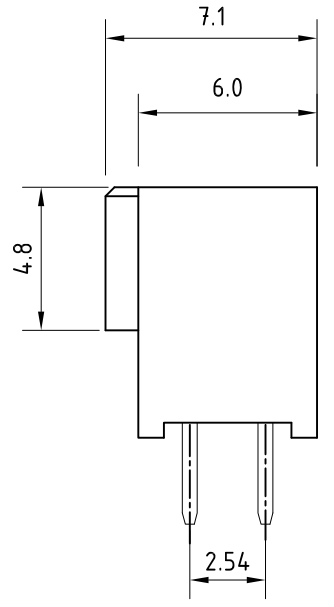
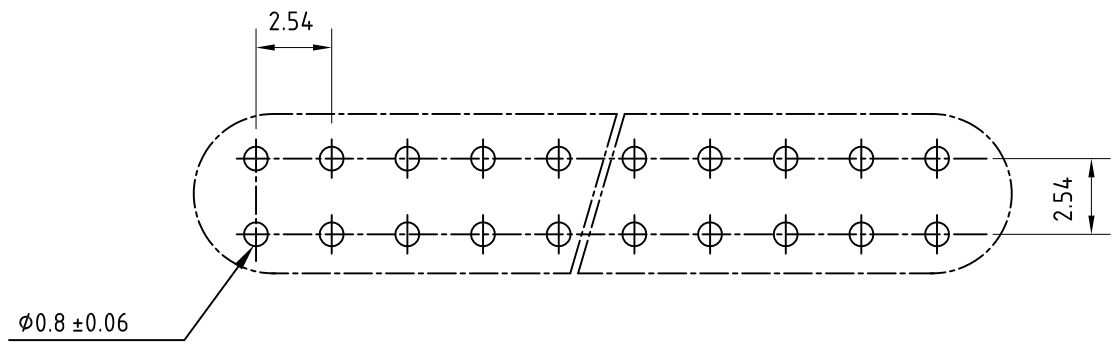
Copyright FCI

FCIconnect.com



A = 2.54 * No. OF SPACES
 B = A + 7.34
 * AVAILABLE CIRCUITS : 8 & 20

PCB DRILLING DETAILS



ORDERING INFORMATION

SERIES NO.	10121492 08 YO 7 LF	LEAD FREE
NO.OF CONTACTS	D/R - 8 & 20	PLATING 7 - GOLD FLASH SELECTIVE
		YO - STRAIGHT SOLDER

TECHNICAL SPECIFICATION

INSULATOR MATERIAL	: SELF EXTINGUISHING THERMOPLASTIC (UL94 V0)
CONTACT MATERIAL	: COPPER ALLOY
MAXIMUM VOLTAGE	: 1000 V rms.
NOMINAL CURRENT	: 3A AT 20°C
INSULATION RESISTANCE	: ≥ 5000 M Ω
CONTACT RESISTANCE	: ≤ 20 m Ω
CLIMATIC CATAGORY	: -55°C TO +125°C / 21 DAYS EXPOSURE TO- INDUSTRIAL ENVIRONMENT HUMIDITY TEST AS HE-14.

NOTES :
 1. THIS PRODUCT MEETS EUROPEAN UNION DIRECTIVES AND OTHER COUNTRY REGULATIONS AS DESCRIBED IN GS-47-0004

mat'l. code		surface		tolerance		projection		product family	
REF TECH SPEC		ISO 1302		ISO 406 ISO 1101		MM		8614	
ltr	ecn no	dr	date	tolerances unless otherwise specified		MM		title	
A	-	GRM	2013-07-12	angles	linear	MM		FEMALE CONNECTOR	
				0°±1°		scale 4:1		(DUAL ROW SS WITH POL.)	
				dr	MINI K VANDANATH	2012-06-13	dwg no		sheet 1 of 1
				enr	ALEX BABU	2012-06-13	10121492		A3
				chr	ALEX BABU	2012-06-13	type		Product Customer Drawing
				appd	BIJU K P	2012-06-13			
sheet index	revision sheet	A	1						

X-ON Electronics

Largest Supplier of Electrical and Electronic Components

Click to view similar products for [Headers & Wire Housings](#) category:

Click to view products by [Amphenol](#) manufacturer:

Other Similar products are found below :

[892-18-020-10-001101](#) [58102-G61-06LF](#) [582553-1](#) [0009485154](#) [009176003701906](#) [0050291907](#) [LY20-4P-DT1-P1E-BR](#) [02.125.8002.8](#)
[609-3404](#) [61062-3](#) [622-0430](#) [622-3653LF](#) [63453-116](#) [636-1030](#) [636-1427](#) [636-3427](#) [636-4007](#) [641938-9](#) [641991-4](#) [644827-2](#) [65817-010LF](#)
[65817-015LF](#) [65863-015LF](#) [66207-023LF](#) [67095-007LF](#) [67601157](#) [68648-049](#) [70.362.1628.0](#) [70-4210](#) [70-4226B](#) [70-4853B](#) [707-5020](#) [707-](#)
[5028](#) [71.350.2428.0](#) [71918-208LF](#) [71961-016LF](#) [733-134](#) [733-162](#) [754199-000](#) [760-3052](#) [787-8014-00](#) [79531-3000](#) [FCN-360C032-B](#) [FCN-](#)
[367T-T012/H](#) [FCN-723D010/2](#) [80.063.4001.1](#) [800-90-001-10-001000](#) [800-90-010-10-002000](#) [801-43-002-10-013000](#) [801-43-006-10-002000](#)