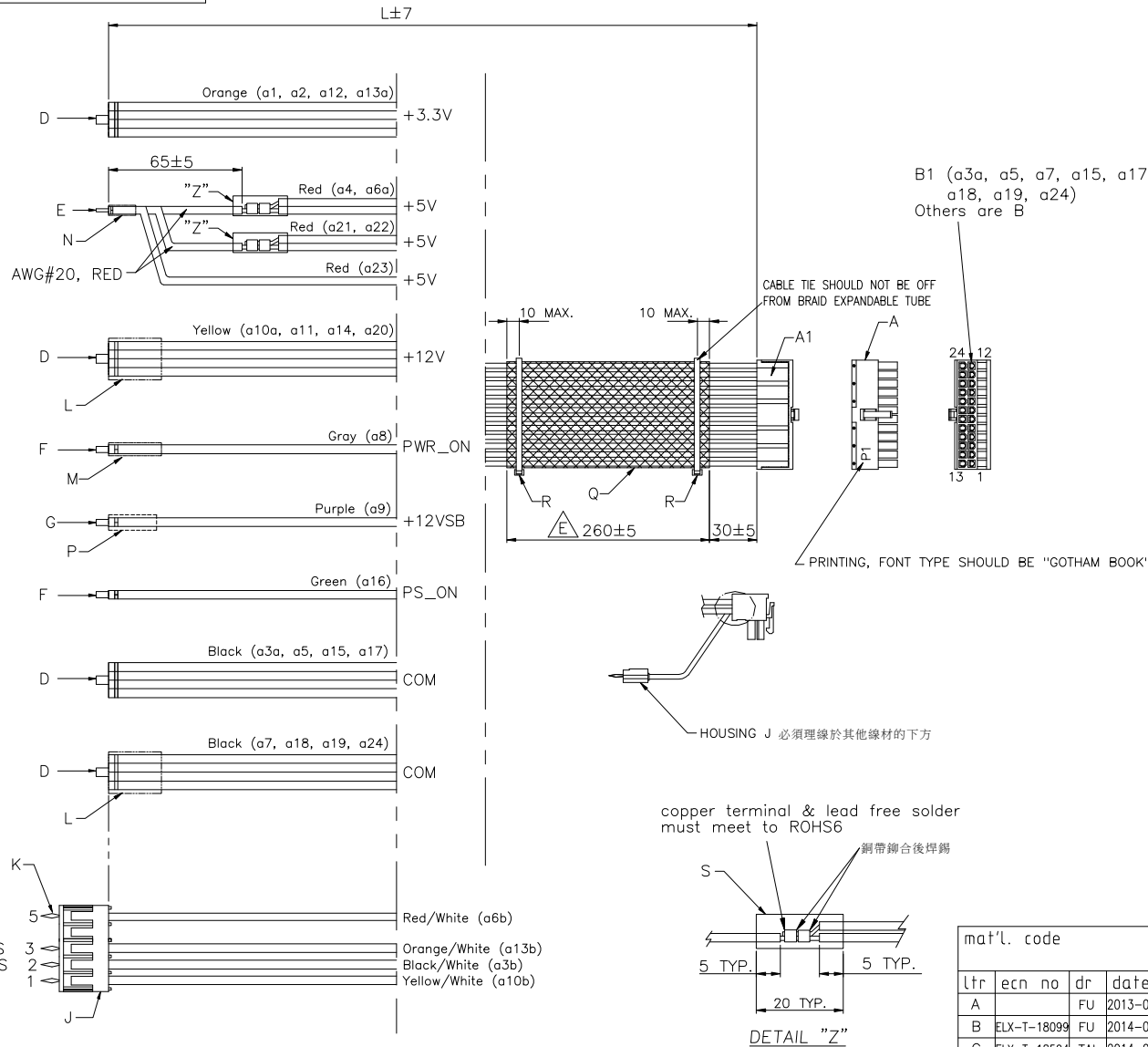


PRODUCT NUMBER
10122956-014LF

MATERIALS:

- A: RA HOUSING, x1, FCI 10122956-H24002
- A1: COVER, x1, FCI 10122956-BC2401
- B: TERMINAL, x16, FCI 10127817-121LF
- B1: HCS TERMINAL, x8, FCI 10130517-121LF
- D: TERMINAL, x4, JWT B3212TOP-A2e
- E: TERMINAL, x1, WELI SHENG INDUSTRIAL PN: H12405PS-2#A
- F: TERMINAL, x2, JWT B1611TOP-2e
- G: TERMINAL, x1, JWT B1815TOP-2e
- J: HOUSING, x1, JWT B2011H02-5P
- K: TERMINAL, x4, JWT B2011TOP-2
- L: H/S TUBE BLACK $\phi 5.0 \times 0.25$, L=10mm, x2
- M: H/S TUBE BLACK $\phi 2.0 \times 0.15$, L=10mm, x1
- N: H/S TUBE BLACK $\phi 4.0 \times 0.25$, L=10mm, x1
- P: H/S TUBE BLACK $\phi 2.5 \times 0.25$, L=10mm, x1
- Q: BRAID EXPANDABLE TUBE, x1, 5/8", BLACK SINGLE STRAND/CARRIER
- R: CABLE TIE, x2
- S: H/S TUBE BLACK $\phi 4.0 \times 0.25$, L=20mm, x2



UL 1430 FLEXIBLE WIRES
(SHORE HARDNESS: 76±5)

PIN NO.	WIRE SIZE & Q'TY	SIGNAL	COLOR	L
a1, a2, a12, a13a	AWG#20, x4	+3.3V	ORANGE	340
a4, a6a, a21, a22, a23	AWG#20, x5	+5V	RED	340
a10a, a11, a14, a20	AWG#18, x4	+12V	YELLOW	330
a8	AWG#22, x1	PWR_OK	GRAY	340
a9	AWG#20, x1	+12VSB	PURPLE	340
a16	AWG#22, x1	PS_ON	GREEN	340
a3a, a5, a15, a17	AWG#18, x4	COM	BLACK	340
a7, a18, a19, a24	AWG#18, x4	COM	BLACK	340
a6b	AWG#24, x1	+5VRS	RED/WHITE	340
a13b	AWG#24, x1	+3.3VRS	ORANGE/WHITE	340
a3b	AWG#24, x1	RETURNS	BLACK/WHITE	340
a10b	AWG#24, x1	+12VRS	YELLOW/WHITE	340

mat'l. code		surface	tolerance	projection	product family
					MINITEK PWR4.2
ltr	ecn no	dr	date	title	
A		FU	2013-09-16	RIGHT ANGLE WIRE OUTLET	
B	ELX-T-18099	FU	2014-06-28	CABLE ASSEMBLY	
C	ELX-T-18594	TAI	2014-09-24	scale	
D	ELX-T-21054	TAI	2014-10-07	dr	BEER FU 2013-09-16
E	ELX-T-21068	TAI	2015-06-05	enrg	BEER FU 2013-09-16
				chr	BEER FU 2013-09-16
				appd	BEER FU 2013-09-16
sheet index	revision sheet	E	1	type	CUSTOMER Drawing

X-ON Electronics

Largest Supplier of Electrical and Electronic Components

Click to view similar products for [Computer Cables](#) category:

Click to view products by [Amphenol](#) manufacturer:

Other Similar products are found below :

[68809-0004](#) [8F36-AAA105-1.00](#) [IB63](#) [CB-716EB-RS](#) [CB-716P8P9-RS](#) [CBK-11-290K-00](#) [ACL-10550](#) [ACL-10568-2](#) [ACL-10568-5](#)
[427522400-3](#) [32102-021500-200-RS](#) [426091300-3](#) [48000023](#) [10114976-P015002LF](#) [88761-6101](#) [NT631C-CN321-EU](#) [ACL-10568NF-1](#)
[MIKROE-2092](#) [PCL-101100R-2E](#) [1700009405](#) [PS/2 Cable](#) [NT31C-CN323-EU](#) [FWAX-PK1-51](#) [PCL-10168H-1E](#) [68801-1905](#) [111068-1015](#)
[100436-1107](#) [68801-0630](#) [68801-3612](#) [68801-3618](#) [205058-1002](#) [PS2NK](#) [SATA cable](#) [96021-0000-00-0](#) [FAK-SMZSMZ 5M](#) [FAK-](#)
[SMZSMZ-3M](#) [ACC-500-200-R](#) [iW-C40-PCIe08-C1](#) [1700001531](#) [96048-0000-00-0](#) [SATA III cable 30cm, down/straight](#) [cab-Pico-ITX-](#)
[LVDS](#) [PCL-101100SB-2E](#) [AXXSTCBLQAT](#) [NT31C-KBA05](#) [PCL-101100M-2E](#) [A2U4PSWCXCXK1](#) [2 port SATA to 5 pin,L=200mm](#)
[ACL-10568NF-2](#) [C-PS2WG/5](#)