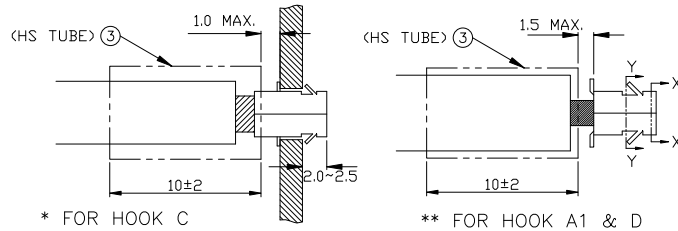
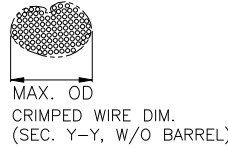
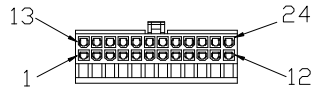
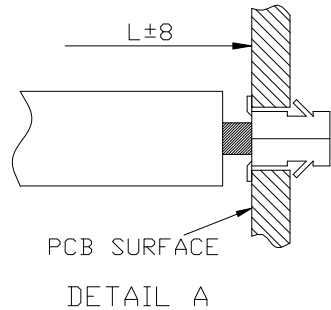
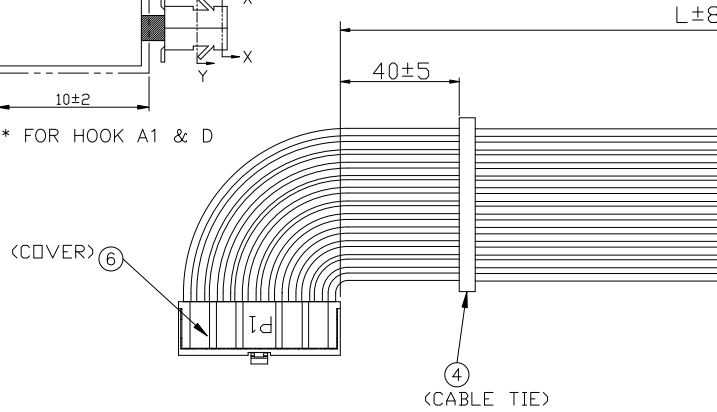


PRODUCT NUMBER  
10122956-021LF

| HOOK      | MAX. OD.  |
|-----------|-----------|
| HOOK (A1) | 1.45 MAX. |
| HOOK (C)  | 2.75 MAX. |
| HOOK (D)  | 1.96 MAX. |

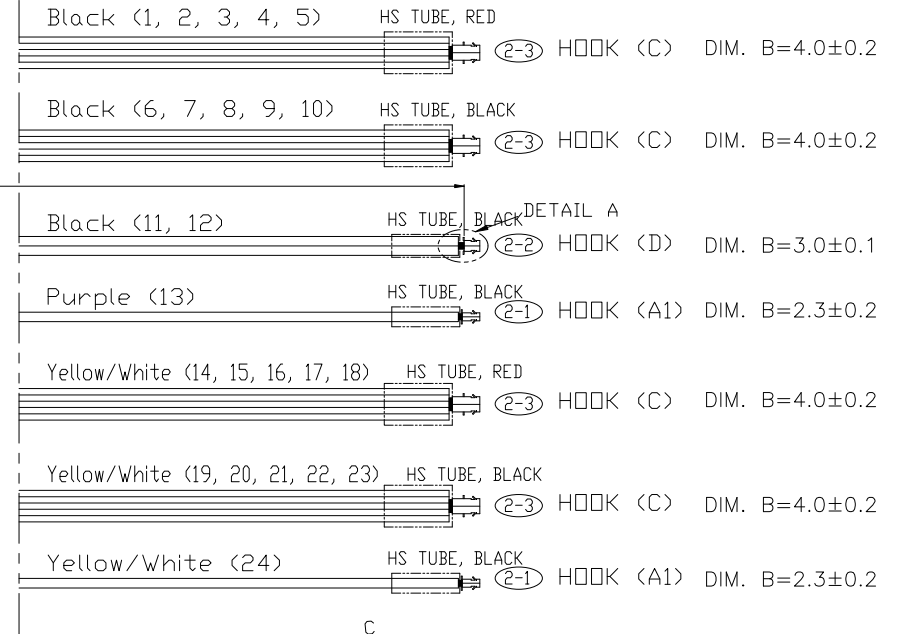


- NOTE:
- ALL TERMINALS ARE CRIMPED ON THE COPPER WIRES.
  - LATCHES OF THE HOOK ARE NOT ALLOWED TO BE ENVELOPED INSIDE THE HS TUBE.
  - CONDUCTORS CAN EXCEED TERMINAL TIP 0.2mm MAX.

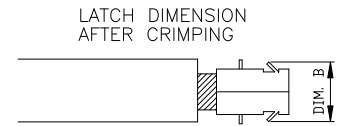
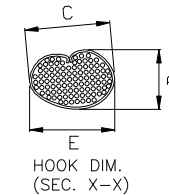


- NOTE:
- ALL MATERIALS ARE RED-PHOSPHOROUS FREE.

| ITEM | DESCRIPTION   | SUPPLIER P/N, OR EQUIVALENT  | MATERIAL                              | REMARK   |
|------|---|--|---------------------------------------|--|
| ①-①  | PVC WIRE, UL1430 VW-1, 105°C 300V, TR-64 FLEXIBLE WIRES   | WONDERFUL, LONGWELL, EVERTOP PACIFIC, REI HSING, SUPERCOM TAYX, EVERLONG |                                       | RoHS<br>UL CSA APPROVAL                            |
| ②-①  | HOOK (A1), FOR PCB HOLE DIA. 1.8±0.08mm   | WST: H11812PS-2#   | PHBR, TIN PLATED                      | RoHS   |
| ②-②  | HOOK (D), FOR PCB HOLE DIA. 2.4±0.08mm  | WST: H12404PS-2#   | PHBR, TIN PLATED                      | RoHS   |
| ②-③  | HOOK (C), FOR PCB HOLE DIA. 3.2±0.08mm  | P3200-ED   | PHBR, TIN PLATED                      | RoHS   |
| ③    | HALOGEN FREE AND RED PHOSPHORUS FREE FLAME-RETARDANT HEAT SHRINKABLE TUBE LENGTH: 10mm, FOR ALL HOOKS | WOER RSFR-H TUBE   |                                       | E203950, 125°C, VW-1 HPF BLACK / RED (SEE DRAWING) |
| ③-①  |   |  |                                       |  |
| ③-②  |   |  |                                       |  |
| ③-③  |   |  |                                       |  |
| ④    | CABLE TIE   | PIN GOOD: YJ-80  | PA66, UL94V-2                         | RoHS   |
| ⑤    | HSG   | FCI 10122956-H24002  | PA66, 94V-0, NATURAL                  | RoHS   |
| ⑥    | COVER   | FCI 10122956-BC2401  | PA66, 94V-0, NATURAL                  | RoHS   |
| ⑦    | HIGH CURRENT TERMINAL   | FCI 10130517-121LF   | HIGH CURRENT COPPER ALLOY, TIN PLATED | RoHS   |



| HOOK      | C        | D        | E        |
|-----------|----------|----------|----------|
| HOOK (A1) | 1.7 MAX. | 1.7 MAX. | 1.7 MAX. |
| HOOK (C)  | 3.1 MAX. | 3.1 MAX. | 3.1 MAX. |
| HOOK (D)  | 2.3 MAX. | 2.3 MAX. | 2.3 MAX. |



| PIN NO. (P1)       | WIRE AWG & Q'TY | FUNCTION  | COLOR        | L   | HOOK      |
|--------------------|-----------------|-----------|--------------|-----|-----------|
| 1, 2, 3, 4, 5      | AWG#18, x5      | GND       | BLACK        | 170 | HOOK (C)  |
| 6, 7, 8, 9, 10     | AWG#18, x5      | GND       | BLACK        | 163 | HOOK (C)  |
| 11, 12             | AWG#18, x2      | GND       | BLACK        | 158 | HOOK (D)  |
| 13                 | AWG#18, x1      | P12V/STBY | PURPLE       | 230 | HOOK (A1) |
| 14, 15, 16, 17, 18 | AWG#18, x5      | P12V      | YELLOW/WHITE | 165 | HOOK (C)  |
| 19, 20, 21, 22, 23 | AWG#18, x5      | P12V      | YELLOW/WHITE | 158 | HOOK (C)  |
| 24                 | AWG#18, x1      | P12V      | YELLOW/WHITE | 148 | HOOK (A1) |

| mat'l. code |        | surface | tolerance  | projection   | product family                                  |
|-------------|--------|---------|------------|--|---|
| ltr         | ecn no | dr      | date       | tolerances unless otherwise specified              | MINITEK PWR4.2                                  |
| A           |        | TAI     | 2016-03-21 | angles<br>0.X ± 0.3<br>0.XX ± 0.13<br>0.XXX ± 0.05 | title<br>RIGHT ANGLE WIRE OUTLET CABLE ASSEMBLY |
|             |        |         |            | 0±2°   | scale   |
|             |        |         |            | dr KENNY TAI 2015-01-08                            | dwg no sheet 1 of 1 size                        |
|             |        |         |            | enr KENNY TAI 2015-01-08                           | 10122956-021LF A4                               |
|             |        |         |            | chr KENNY TAI 2015-11-18                           | type CUSTOMER Drawing                           |
|             |        |         |            | appd PM ZHENG 2016-03-21                           |   |

## X-ON Electronics

Largest Supplier of Electrical and Electronic Components

*Click to view similar products for [Computer Cables](#) category:*

*Click to view products by [Amphenol](#) manufacturer:*

Other Similar products are found below :

[68809-0004](#) [8F36-AAA105-1.00](#) [IB63](#) [CB-716EB-RS](#) [CB-716P8P9-RS](#) [CBK-11-290K-00](#) [ACL-10550](#) [ACL-10568-2](#) [ACL-10568-5](#)  
[427522400-3](#) [32102-021500-200-RS](#) [426091300-3](#) [48000023](#) [10114976-P015002LF](#) [88761-6101](#) [NT631C-CN321-EU](#) [ACL-10568NF-1](#)  
[MIKROE-2092](#) [PCL-101100R-2E](#) [1700009405](#) [PS/2 Cable](#) [NT31C-CN323-EU](#) [FWAX-PK1-51](#) [PCL-10168H-1E](#) [68801-1905](#) [111068-1015](#)  
[100436-1107](#) [68801-0630](#) [68801-3612](#) [68801-3618](#) [205058-1002](#) [PS2NK](#) [SATA cable](#) [96021-0000-00-0](#) [FAK-SMZSMZ 5M](#) [FAK-](#)  
[SMZSMZ-3M](#) [ACC-500-200-R](#) [iW-C40-PCIe08-C1](#) [1700001531](#) [96048-0000-00-0](#) [SATA III cable 30cm, down/straight](#) [cab-Pico-ITX-](#)  
[LVDS](#) [PCL-101100SB-2E](#) [AXXSTCBLQAT](#) [NT31C-KBA05](#) [PCL-101100M-2E](#) [A2U4PSWCXCXK1](#) [2 port SATA to 5 pin,L=200mm](#)  
[ACL-10568NF-2](#) [C-PS2WG/5](#)