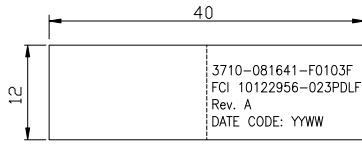
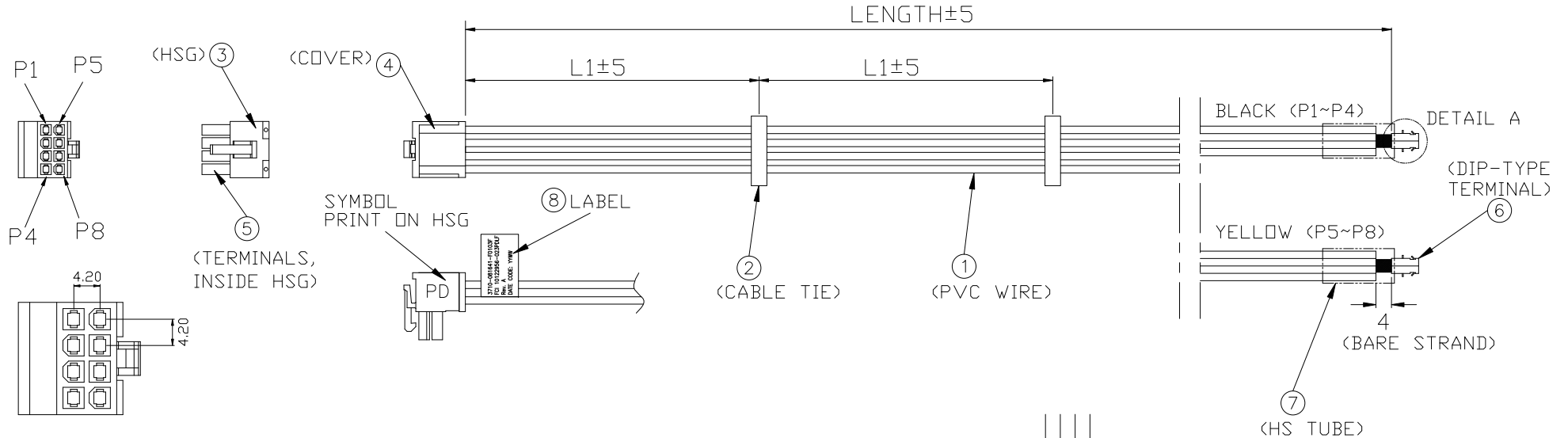
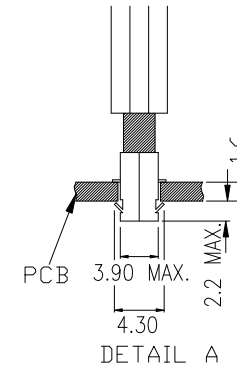


PRODUCT NUMBER	SYMBOL	LENGTH	L1	COMPUWARE P/N	COMPUWARE ECR/EN NO.
10122956-023PDLF	PD	SEE TABLE	120	3710-081641-F0103F	EN11-16040001



LABEL DETAIL

PIN NO.	SIGNAL	COLOR	WIRE SPEC.	LENGTH OF PD	COMBINATION	PCB HOLE
P1	GND	BLACK	UL1430, 16AWG	400	P1+P2 +P3+P4	ø4.0±0.05
P2	GND	BLACK	UL1430, 16AWG	400		
P3	GND	BLACK	UL1430, 16AWG	400		
P4	GND	BLACK	UL1430, 16AWG	400		
P5	+12V	YELLOW	UL1430, 16AWG	410	P5+P6 +P7+P8	ø4.0±0.05
P6	+12V	YELLOW	UL1430, 16AWG	410		
P7	+12V	YELLOW	UL1430, 16AWG	410		
P8	+12V	YELLOW	UL1430, 16AWG	410		



*HS TUBE SHOULD ENVELOP THE UPPER OF THE LATCH, BUT CAN'T ENVELOP THE LATCHES

COMPONENT LIST OF EACH CABLE

ITEM	DESCRIPTION	SUPPLIER P/N, OR EQUIVALENT	Q'TY	MATERIAL	REMARK
①	PVC WIRE, 16 AWG, UL1430, 105°C 300V				UL CSA APPROVAL
②	CABLE TIE		2	PA66, UL94V-2	
③	HSG	FCI 10122956-H08002	1	PA66, 94V-0, NATURAL	
④	COVER	FCI 10122956-BC0801	1	PA66, 94V-0, NATURAL	
⑤	RECEPTACLE CRIMP TERMINAL, HCC	FCI 10130517-121LF	8	COPPER ALLOY, TIN PLATED	
⑥	DIP-IN TTYPE TERMINAL	WELI SHENG H13903PS-2#	2	PHBR, TIN PLATED	FOR PCB HOLE ø3.9
⑦	HS TUBE, ø6mm*10mm		2	EVA, UL 94V-0	125°, BLACK, UL APPROVAL
⑧	LABEL, 12mm*40mm		1		

mat'l. code		surface	tolerance	projection	product family	
ltr		tolerances unless otherwise specified		mm	MINITEK PWR4.2	
ecn no	dr	date	angles		title	
A	TAI	2016-04-13	linear	scale	RIGHT ANGLE WIRE OUTLET CABLE ASSEMBLY, 8 POS.	
dr		KENNY TAI	2016-04-13	FCI	dwg no	
enr		KENNY TAI	2016-04-13		sheet 1 of 1	size
chr		KENNY TAI	2016-04-13		10122956-023PDLF	A4
appd		PM ZHENG	2016-04-13		type	CUSTOMER Drawing
sheet index	revision sheet	A	1			

X-ON Electronics

Largest Supplier of Electrical and Electronic Components

Click to view similar products for [Computer Cables](#) category:

Click to view products by [Amphenol](#) manufacturer:

Other Similar products are found below :

[68809-0004](#) [8F36-AAA105-1.00](#) [IB63](#) [CB-716EB-RS](#) [CB-716P8P9-RS](#) [CBK-11-290K-00](#) [ACL-10550](#) [ACL-10568-2](#) [ACL-10568-5](#)
[427522400-3](#) [32102-021500-200-RS](#) [426091300-3](#) [48000023](#) [10114976-P015002LF](#) [88761-6101](#) [NT631C-CN321-EU](#) [ACL-10568NF-1](#)
[MIKROE-2092](#) [PCL-101100R-2E](#) [1700009405](#) [PS/2 Cable](#) [NT31C-CN323-EU](#) [FWAX-PK1-51](#) [PCL-10168H-1E](#) [68801-1905](#) [111068-1015](#)
[100436-1107](#) [68801-0630](#) [68801-3612](#) [68801-3618](#) [205058-1002](#) [PS2NK](#) [SATA cable](#) [96021-0000-00-0](#) [FAK-SMZSMZ 5M](#) [FAK-](#)
[SMZSMZ-3M](#) [ACC-500-200-R](#) [iW-C40-PCIe08-C1](#) [1700001531](#) [96048-0000-00-0](#) [SATA III cable 30cm, down/straight](#) [cab-Pico-ITX-](#)
[LVDS](#) [PCL-101100SB-2E](#) [AXXSTCBLQAT](#) [NT31C-KBA05](#) [PCL-101100M-2E](#) [A2U4PSWCXCXK1](#) [2 port SATA to 5 pin,L=200mm](#)
[ACL-10568NF-2](#) [C-PS2WG/5](#)