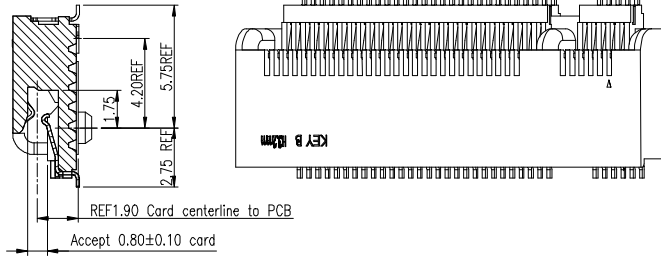
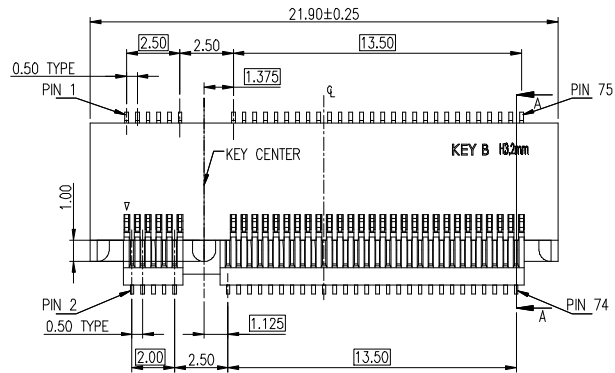


**PART NUMBER**  
**10125101-AXXRLF**

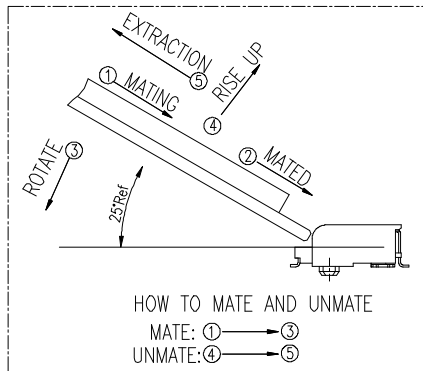
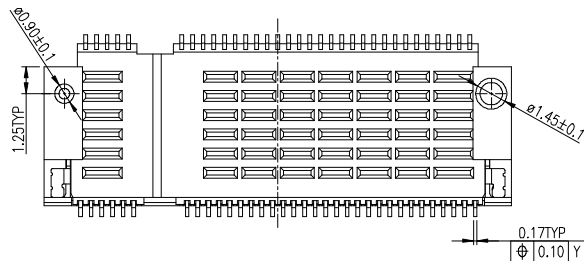
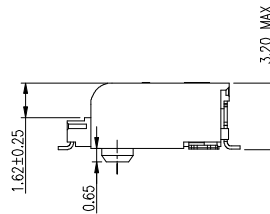
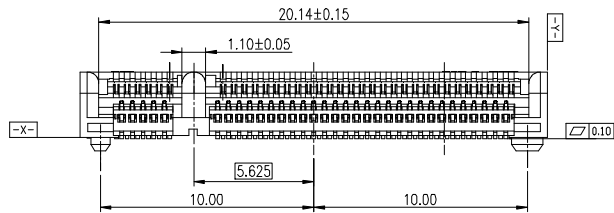
NOTES:

- 1.MATERIAL:
  - 1) HOUSING: HIGH TEMPERATURE THERMOPLASTIC, COLOR BLACK.
  - 2) CONTACT: COPPER ALLOY.
  - 3) NAIL: COPPER ALLOY.
- 2.FINISH:
  - 2.1 CONTACTS:
    - 1) 50u" MIN. Ni UNDER PLATED ALL
    - 2) Au PLATING ON CONTACT AREA.
    - 3) MATTE Tin 80u" MIN. ON SOLDER AREA.
  - 2.2 NAILS:
    - 1) 50u" MIN. Ni UNDER PLATED OVER ALL.
    - 2) MATTE Tin 80u" MIN. ON SOLDER AREA.
3. GENERAL CHARACTERISTICS:
  - 3.1 RATING: 50V 0.5A
  - 3.2 INSULATION RESISTANCE: 100Mohm MIN. AT 500VDC
  - 3.3 DIELECTRIC WITHSTANDING VOLTAGE: 300VAC FOR ONE MINUTE.
  - 3.4 CONTACT RESISTANCE: 55 mohm MAX. (BEFORE).
  - 3.5 MATING/UNMATING FORCE: 2.3Kgf MAX.
4. DURABILITY 50 CYCLES.
5. PRODUCT SPECIFICATION SEE FCI GS-12-1142.
6. FOR REFLOW SOLDERING, LEAD-FREE PROCESS.
7. THE PRODUCT IS RoHS COMPLIANT AND HALOGEN FREE.
8. P/N: 10125101- A XX R L F

- R=TAPE REEL PACKING
  - CONTACT AREA PLATING
  - 01:GoldFlash (Au1u")
  - 15:Au15u"
  - 30:Au30u"
- HEIGHT  
A=3.2

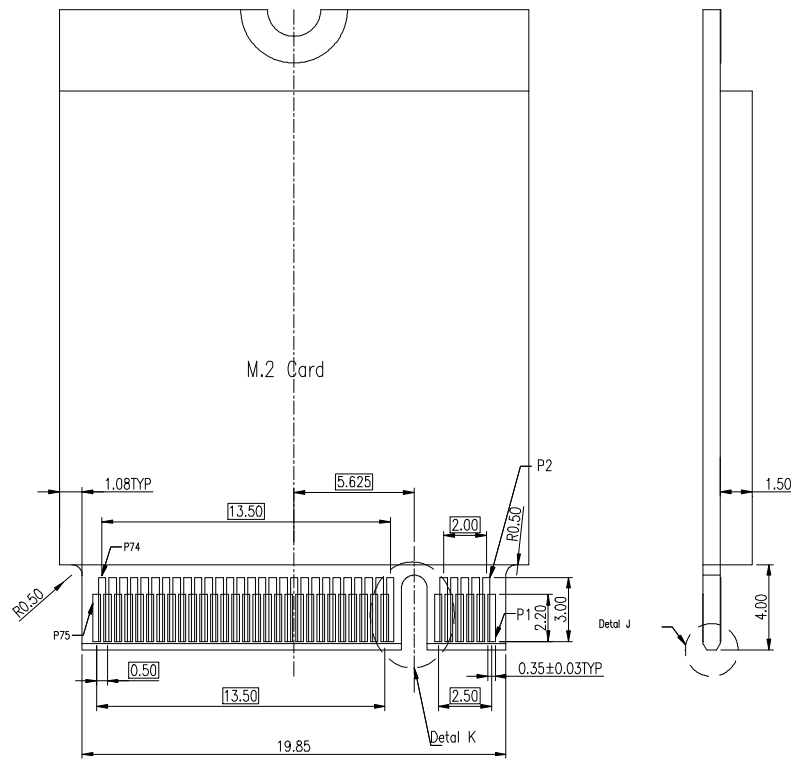


SECTION A-A  
SCALE: 1:1

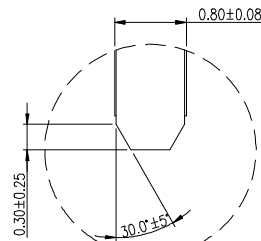


mat'l. code		surface		tolerance		projection		product family	
ltr ecn no dr date		tolerances unless otherwise specified		angles		mm		title	
A		BF	2013-05-02	.X	±0.3	mm		M.2 CONN P=0.5MM	
B		BF	2014-01-03	.XX	±0.25	mm		H3.2MM KEY B	
C	ELX-T-19318	TAI	2014-11-06	X*±2°	.XXX	scale		sheet 1 of 3 size	
		dr		BEER FU		2013-05-02		dwg no	
		enr		BEER FU		2013-05-02		10125101	
		chr		BEER FU		2013-05-02		A4	
		appd		BEER FU		2013-05-02		type	
								CUSTOMER Drawing	
sheet index	revision sheet	C	C	C					
		1	2	3					

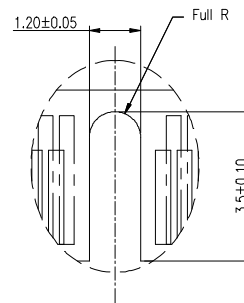
**PART NUMBER**  
**10125101-AXXRLF**



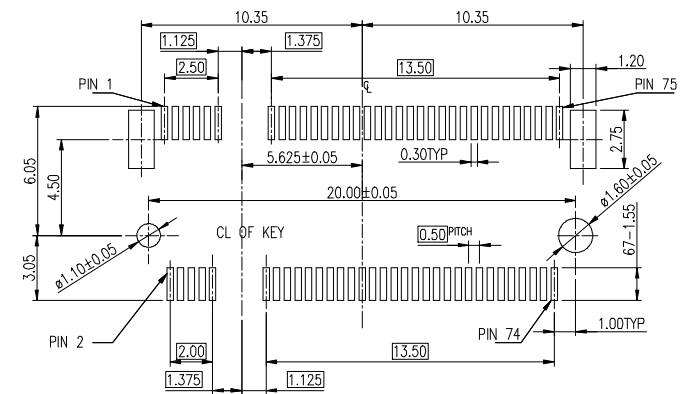
RECOMMENDED SINGLE CARD LAYOUT  
TOLERANCE ±0.05(TOP VIEW)



DETAIL K  
SCALE:2:1



DETAIL J  
SCALE:2:1



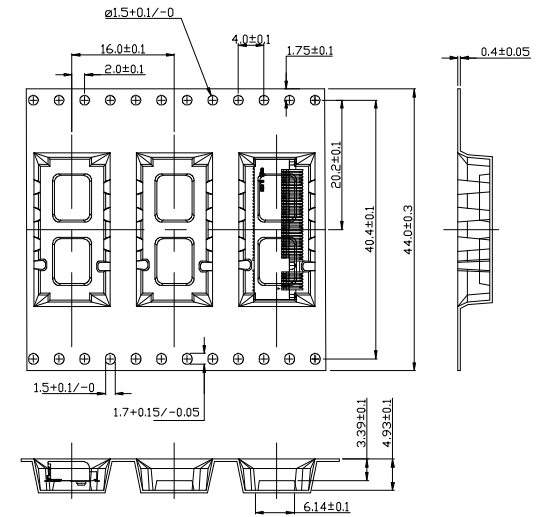
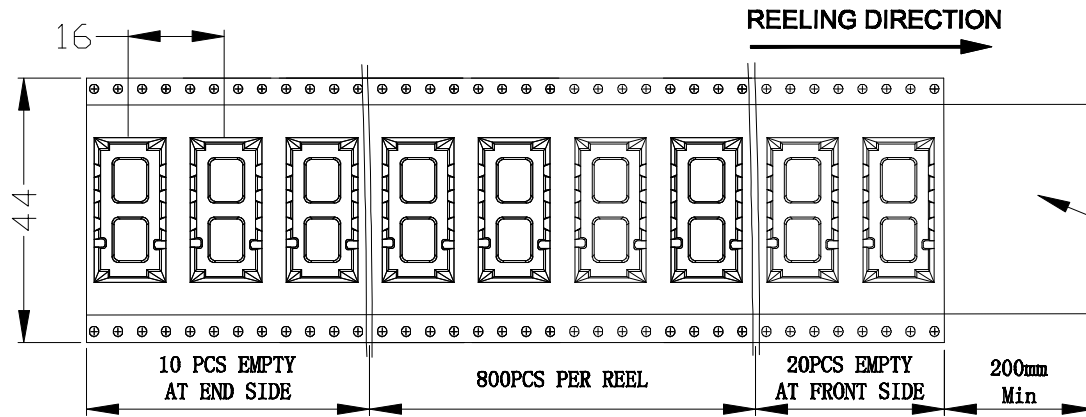
CARD FIXED HOLE(NOT SHOWN) LAYOUT SHALL REFER TO M.2 CARD PROVIDER

RECOMMENDED SINGLE CARD LAYOUT  
TOLERANCE ±0.05(TOP VIEW)

FCI	dwg no	sheet 2 of 3	size
		10125101	A4
	type	CUSTOMER Drawing	

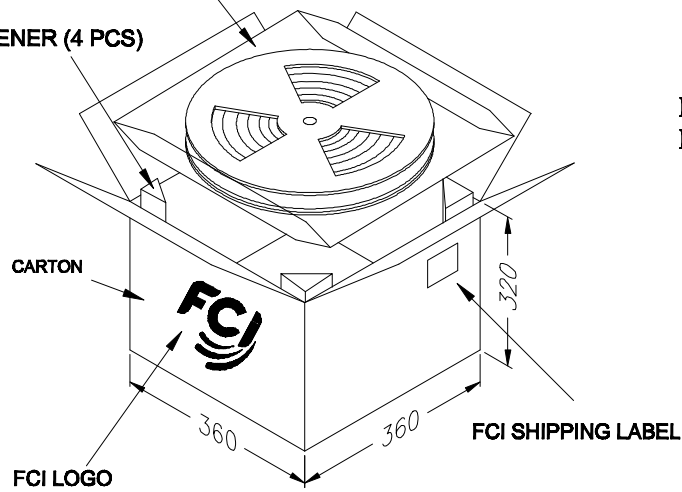
sheet index	revision sheet	C	C	C															
	1	2	3																

**PACKING SPECIFICATION**

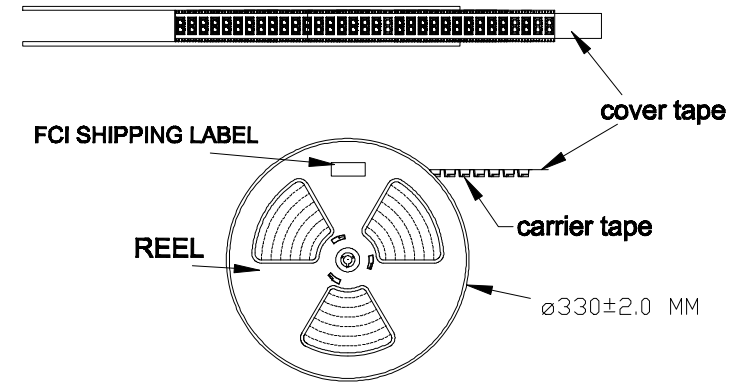
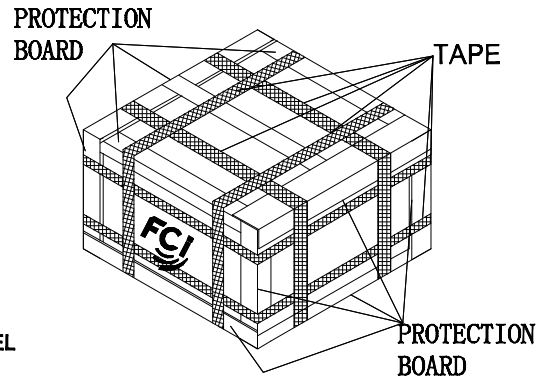


PLASTIC BAGS (2 PCS), 3 REELS/BAG, TOTAL 6 REELS/CARTON

STIFFENER (4 PCS)



Final Packing



PART NUMBER	10125101-AXXRLF
PCS/REEL	800
REEL/CARTON	6
PCS/CARTON	4800
NET WEIGHT (KG)	2.5KG
GROSS WEIGHT (KG)	6.5KG



dwg no	sheet 3 of 3	size
10125101		A4
type	CUSTOMER Drawing	

sheet index	revision sheet	C	C	C																
	1	2	3																	

## X-ON Electronics

Largest Supplier of Electrical and Electronic Components

*Click to view similar products for [PCI Express/PCI Connectors](#) category:*

*Click to view products by [Amphenol](#) manufacturer:*

Other Similar products are found below :

[UEX220-6U](#) [10039755-10110TLF](#) [1-1871239-2](#) [2170560-2](#) [10125756-980000LF](#) [EB220-3U](#) [WD2M144WB2R300](#) [10061913-120PLF](#)  
[GPCP146400111HR](#) [GPCP442628110HR](#) [GPCP446200120HR](#) [GPCP245400111HR](#) [10082378-10000TLF](#) [87715-9256](#) [MDT580M03001](#)  
[0877159107](#) [10018783-11000MLF](#) [10018783-11101TLF](#) [10108777-10000ALF](#) [10141523-111T0LF](#) [10145445-10003MLF](#)  
[PSASF2130311TR](#) [PSASF3130411TR](#) [PSASF3130131TR](#) [7-1734774-7](#) [3-1761465-1](#) [10039755-10111TLF](#) [10039755-10112TLF](#) [10018783-](#)  
[10211TLF](#) [10018784-10211TLF](#) [10018784-10212TLF](#) [1761465-2](#) [1871058-1](#) [5-1761465-4](#) [10018783-10200MLF](#) [10018783-10213TLF](#)  
[10018784-10210TLF](#) [10018784-11113TLF](#) [10025026-10001TLF](#) [5145154-8](#) [1871058-4](#) [2041119-2](#) [10018783-10212TLF](#) [10018784-](#)  
[10102TLF](#) [10018783-11200TLF](#) [10123371-001TRLF](#) [10018784-10110TLF](#) [6-1734774-7](#) [6-1734774-9](#) [1775838-2](#)