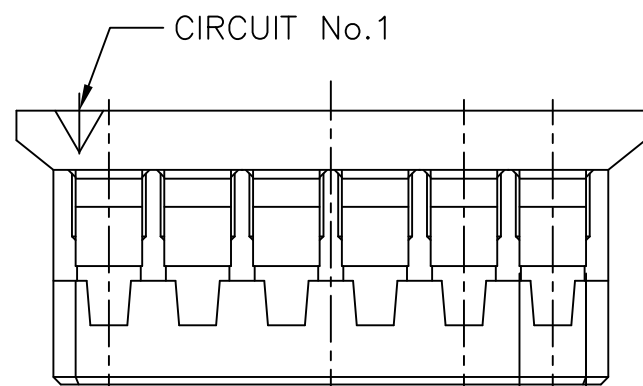
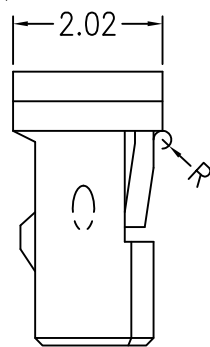
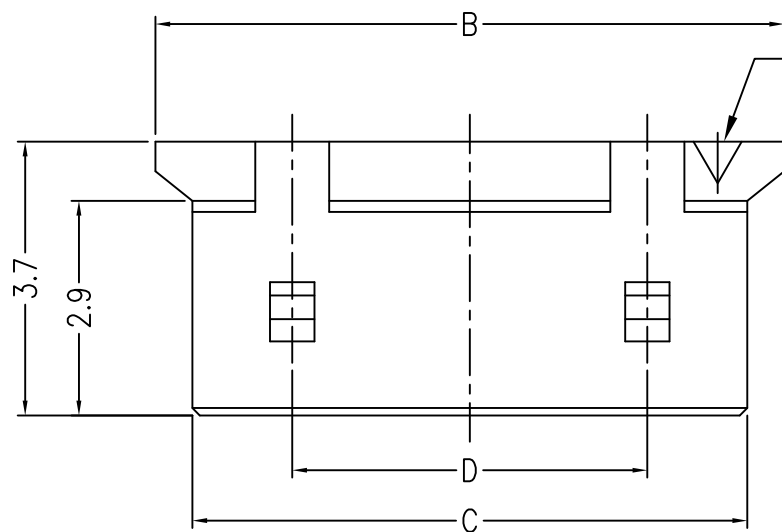
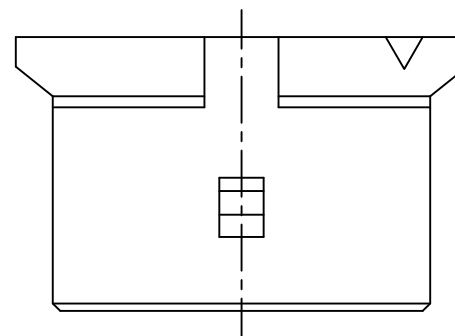
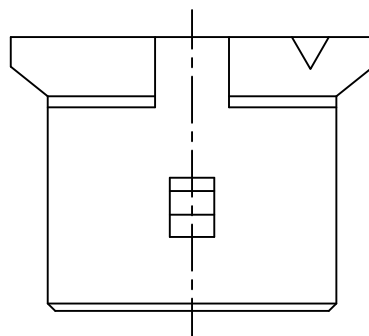
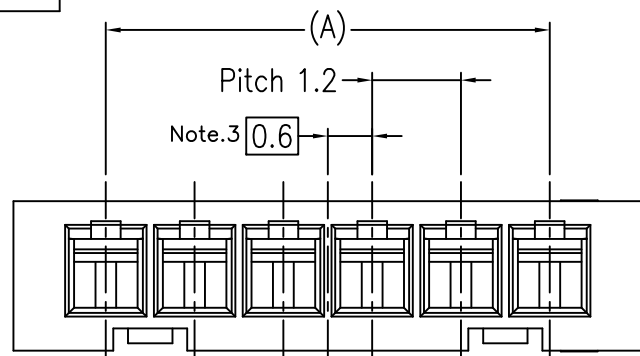


PRODUCT NO.

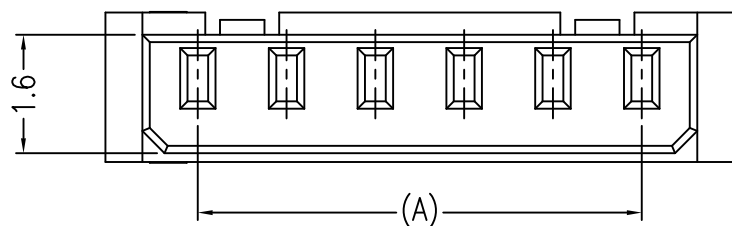
10125836-\*\*-001\*\*

10125836-03-001

10125836-04-001



0.9 TYP(n)



	2,000	1,000	4.8	7.5	8.5	6.0	10125836-06-001SP	6
20,000	5,000						10125836-06-001	
	2,000	2,000		5.1	6.1	3.6	10125836-04-001SP	4
40,000	10,000						10125836-04-001	
	2,000	2,000		3.9	4.9	2.4	10125836-03-001SP	3
40,000	10,000						10125836-03-001	
INNER BOX (pcs)	INNER BOX (pcs)	POLY BAG (pcs)	D	C	B	A	PRODUCT NO.	CIRCUIT

mat'l. code		surface		tolerance		projection		product family		CODE	
---		ISO 1302		ISO 406		MM		PLUG HOUSING		JP	
---		ISO 1101		tolerances unless otherwise specified		MM		FOR 1.2mm PITCH WTB CONNECTOR		title	
---		linear		0.X ±0.3		scale 10:1		10125836		sheet 1 of 1 size A3	
---		0°±2'		0.XXX ±0.3		FCJ		Product Customer Drawing		Rev. E	
---		Y.KAMEDA		2015-11-09		---		---		---	
---		Y.KAMEDA		2015-11-09		---		---		---	
---		H.SUZUKI		2015-11-09		---		---		---	
---		N.SASAME		2015-11-09		---		---		---	
sheet index		revision sheet		---		---		---		---	

- Note
- Mate with : P/N10125839-\*\*\*\*EHLF
  - Applicable terminal : P/N10125837-\*\*\*\*\*
  - Apply even circuit products. odd circuit products is 0mm.
  - Material : High Temp Thermoplastic, UL94V-0, Black
  - This product meet European Union Directives and other country regulations as described GS-22-008

## X-ON Electronics

Largest Supplier of Electrical and Electronic Components

*Click to view similar products for [Headers & Wire Housings](#) category:*

*Click to view products by [Amphenol](#) manufacturer:*

Other Similar products are found below :

[892-18-020-10-001101](#) [58102-G61-06LF](#) [582553-1](#) [0009485154](#) [009176003701906](#) [0050291907](#) [LY20-4P-DT1-P1E-BR](#) [02.125.8002.8](#)  
[609-3404](#) [61062-3](#) [622-0430](#) [622-3653LF](#) [63453-116](#) [636-1030](#) [636-1427](#) [636-3427](#) [636-4007](#) [641938-9](#) [641991-4](#) [644827-2](#) [65817-010LF](#)  
[65817-015LF](#) [65863-015LF](#) [66207-023LF](#) [67095-007LF](#) [67601157](#) [68648-049](#) [70.362.1628.0](#) [70-4210](#) [70-4226B](#) [70-4853B](#) [707-5020](#) [707-](#)  
[5028](#) [71.350.2428.0](#) [71918-208LF](#) [71961-016LF](#) [733-134](#) [733-162](#) [754199-000](#) [760-3052](#) [787-8014-00](#) [79531-3000](#) [FCN-360C032-B](#) [FCN-](#)  
[367T-T012/H](#) [FCN-723D010/2](#) [80.063.4001.1](#) [800-90-001-10-001000](#) [800-90-010-10-002000](#) [801-43-002-10-013000](#) [801-43-006-10-002000](#)