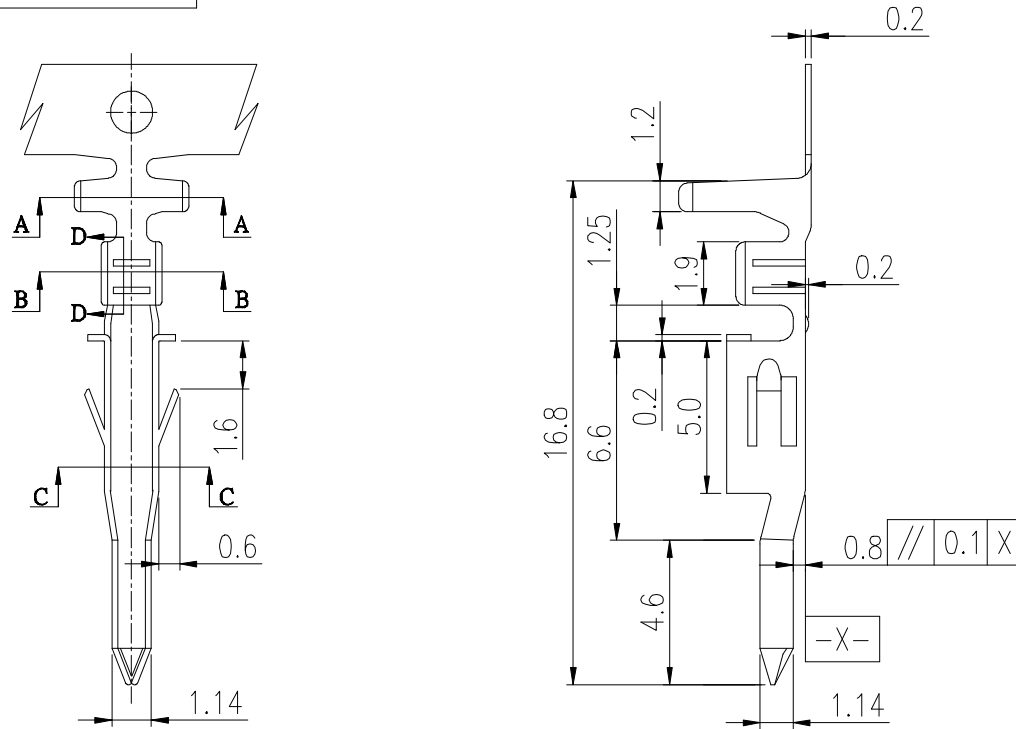


PRODUCT NUMBER
SEE PART NO. TABLE



NOTES:

1. MATERIAL: OPTIONAL.
2. THIS TERMINAL IS USED WITH FCI PLUG HSG 10127816.
3. PRODUCT SPECIFICATION: GS-12-1181.
4. PACKAGE SPECIFICATION: GS-14-2362.
5. PART NUMBER SCHEME:
10127818- X X X X LF

PLATING TYPE:
P: PRE-PLATED
BLANK: POST-PLATED

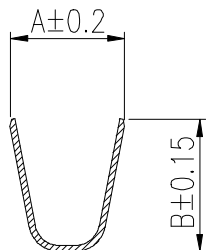
APPLICABLE AWG:
1. AWG #16~#22
2. AWG #24~#28

PLATING CODE:
1: GOLD FLASH
2: TIN

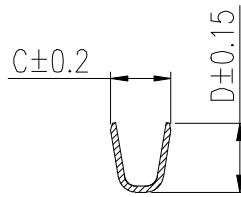
MATERIAL CODE:
1: PHOSPHORUS BRONZE
2: BRASS

6. DIMENSIONAL & PART NO. TABLE:

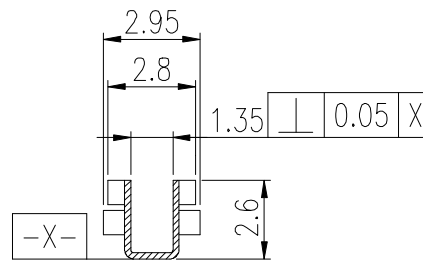
PART NO.	A	B	C	D	APPLICABLE WIRES
10127818-XX2XLF	3.2	3.4	1.8	2.2	#24~#28
10127818-XX1XLF	3.7	4.5	1.8	2.7	#16~#22



SEC A-A



SEC B-B



SEC C-C

mat'l. code		surface <input checked="" type="checkbox"/>		tolerance	projection	product family	
ltr		ecn no	dr	date	tolerances unless otherwise specified		title
A		TAI	2013-11-11	angles	$X.X \pm 0.4$	PLUG TERMINAL FOR MINITEK PWR4.2 WIRE CONNECTOR	
B	ELX-T-17193	TAI	2014-03-12	flatness	$X.XX \pm 0.3$		scale
C	ELX-T-18006	TAI	2014-06-19	total run out	$X^* \pm 1^*$	dwg no	
				dr	KENNY TAI		2013-11-11
				enr	KENNY TAI	2013-11-11	size
				chr	KENNY TAI	2013-11-11	10127818
				appd	PM ZHENG	2013-11-22	A4
sheet index		revision sheet	C	1			type
						CUSTOMER Drawing	



X-ON Electronics

Largest Supplier of Electrical and Electronic Components

Click to view similar products for [Power to the Board](#) category:

Click to view products by [Amphenol](#) manufacturer:

Other Similar products are found below :

[6450171-4](#) [6450552-7](#) [6600323-8](#) [6643429-1](#) [6646040-2](#) [6651939-1](#) [6766604-1](#) [120959-1](#) [1393557-2](#) [1393532-2](#) [1393532-3](#) [1393532-4](#)
[1393557-1](#) [1600812-5](#) [1-6450861-2](#) [1744132-7](#) [1761122-1](#) [1766250-1](#) [1892109-1](#) [2-6450860-5](#) [2-6450870-0](#) [1-6450161-4](#) [1-6450850-6](#) [1-](#)
[6450869-6](#) [1645526-2](#) [1-6600130-0](#) [2005243-2](#) [TE34-12-16P-F0](#) [5-6450830-6](#) [5646956-4](#) [4-6450830-9](#) [4-6600333-3](#) [10125416-4050LF](#)
[6600320-3](#) [3-6450860-5](#) [1888123-2](#) [6450166-1](#) [6643978-1](#) [6766605-1](#) [N11444](#) [6651938-1](#) [6450810-7](#) [46437-1112](#) [1-1589677-8](#) [5646956-5](#)
[6450813-2](#) [6450129-4](#) [1645523-1](#) [PSS-06-01-T-S](#) [0465621864](#)