

(VIEW WITH CAP)

- NOTES:
- MATERIAL:
HSG: OPTIONAL, UL94V-0.
COLOR: NATURAL.
TERMINAL: BRASS.
PLATING: 50u" NI UNDERPLATING; OPTIONAL ON CONTACT AREA.
PICK & PLACE CAP: HIGH TEMP. THERMOPLASTIC WIRE CONNECTOR 10127815.
 - THIS PLUG MATES WITH FCI RECEPTACLE WIRE CONNECTOR 10127815.
 - PRODUCT SPECIFICATION: GS-12-1181.
 - PACKAGE SPECIFICATION: GS-14-2362.
 - THE HOUSING WILL WITHSTAND EXPOSURE TO 235°C PEAK TEMPERATURE FOR 5 SECONDS IN A WAVE SOLDER APPLICATION WITH A 1.6mm MINIMUM THICK CIRCUIT BOARD. (FOR PA66)
THE HOUSING WILL WITHSTAND EXPOSURE TO 260 °C PEAK TEMPERATURE FOR 10 SECONDS IN A REFLOW OVEN. (FOR LCP ONLY)
 - PART NUMBER SCHEME:
10127820- XX X X X X X LF

POS. CODE:
02: 2 POS.
04: 4 POS.
24: 24 POS.

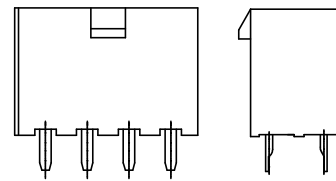
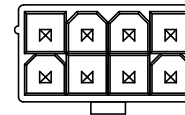
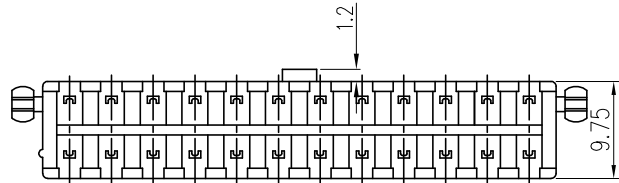
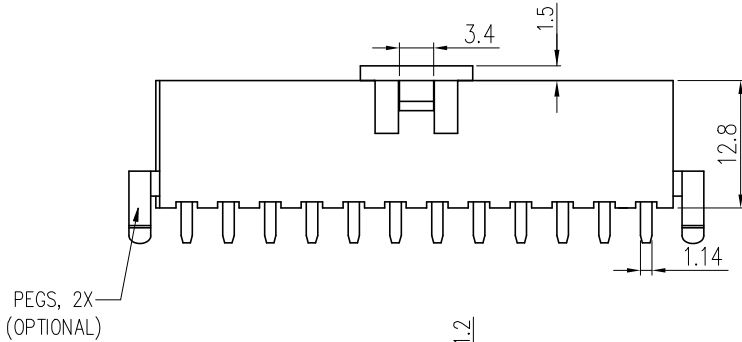
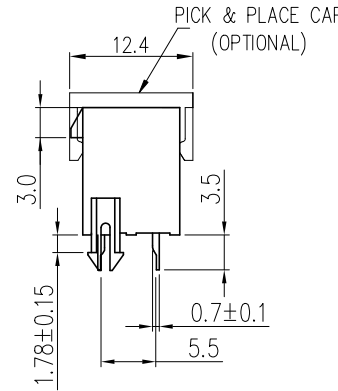
BLANK: NO CAP, TRAY PACKAGE
C: WITH CAP, TAPE/REEL PACKAGE
T: NO CAP, TAPE/REEL PACKAGE

TERMINAL MATERIAL:
2: BRASS, TAIL LENGTH 3.5mm
3: BRASS, TAIL LENGTH 1.9mm

PEG:
BLANK: NO PEG
P: 2 PEGS

PLATING CODE:
1: GOLD FLASH
2: 80u" Min Tin
4: 30u" Au
S: GOLD FLASH ON CONTACT, MATTE TIN ON TAILS

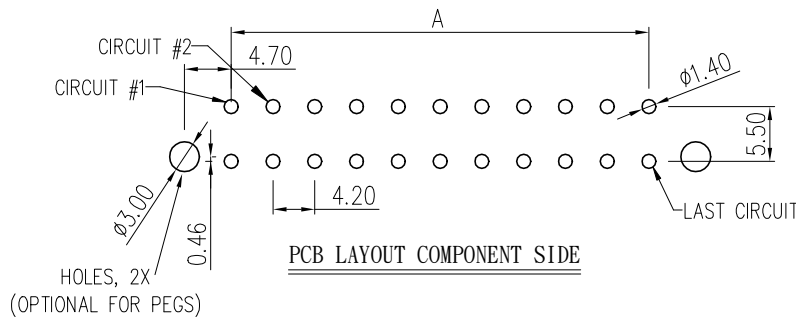
GLOW WIRE COMPATIBLE:
BLANK: PA66, NON COMPATIBLE
C: PA66, COMPATIBLE
L: LCP, COMPATIBLE
B: LCP, BLACK COMPATIBLE



PART WITHOUT PEGS

7. DIMENSIONAL & PART NO. TABLE:

PART NUMBER	POS.	A	B
10127820-02XXXXXL	02	4.2	5.4
10127820-04XXXXXL	04	4.2	9.6
10127820-06XXXXXL	06	8.4	13.8
10127820-08XXXXXL	08	12.6	18.0
10127820-10XXXXXL	10	16.8	22.2
10127820-12XXXXXL	12	21.0	26.4
10127820-14XXXXXL	14	25.2	30.6
10127820-16XXXXXL	16	29.4	34.8
10127820-18XXXXXL	18	33.6	39.0
10127820-20XXXXXL	20	37.8	43.2
10127820-22XXXXXL	22	42.0	47.4
10127820-24XXXXXL	24	46.2	51.6



mat'l. code		surface ISO 1302 ✓		tolerance ISO 406 ISO		projection 1101		product family MINITEK PWR4.2	
ltr	ecn no	dr	date	tolerances unless otherwise specified		mm		title	
H	ELX-T-17184	TAI	2015-03-16	angles	.0±.40	mm		MINITEK PWR4.2,WTB HEADER, DUAL ROW,VT,DIP TYPE	
J	ELX-T-21113	TAI	2015-06-08	linear	.00±.30	mm			
K	ELX-T-21843	TAI	2016-06-02	0°±1'		scale 1:1			
L	ELX-T-26123	TAI	2017-02-20	dr	KENNY TAI	2013-11-11	dwg no		sheet 1 of 2
M	ELX-N-26497	TONY	2017-03-29	eng	KENNY TAI	2013-11-11	10127820		A3
N	ELX-N-28165	TONY	2017-10-16	chr	KENNY TAI	2013-11-11	type		Product Customer Drawing
P	ELX-N-30477	TONY	2018-06-15	app	PM ZHENG	2013-11-22			
sheet index	revision	P	P						
	sheet	1	2						

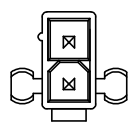
1 2 3 4 5 6

A A

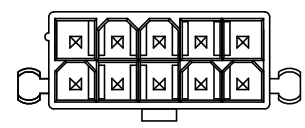
B B

C C

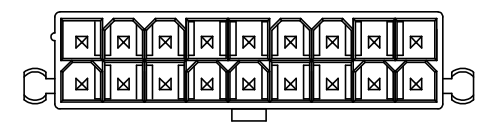
D D



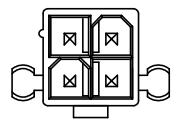
2 POS



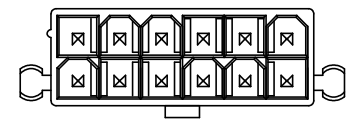
10 POS



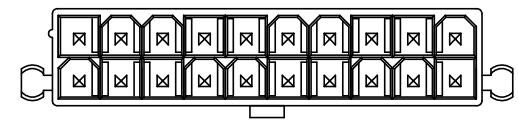
18 POS



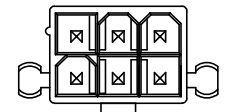
4 POS



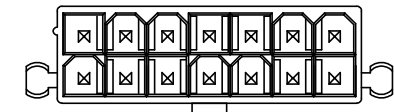
12 POS



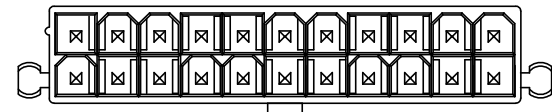
20 POS



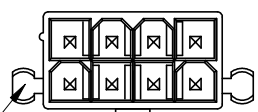
6 POS



14 POS

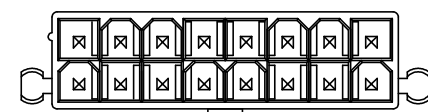


22 POS

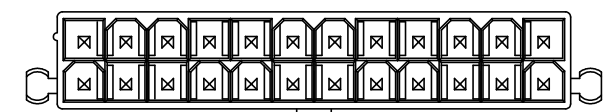


8 POS

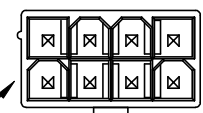
WITH PEG



16 POS



24 POS



VIEW WITHOUT PEG

NO PEG

mat'l. code		surface	tolerance	projection	product family
ltr	ecn no	dr	date	ISO 1302	MINITEK PWR4.2
				ISO 406	title
				ISO	MINITEK PWR4.2,WTB HEADER, DUAL ROW,VT,DIP TYPE
				tolerances unless otherwise specified	dwg no
				angles	sheet 2 of 2
				linear	size
				0±1°	10127820
				mm	A3
				scale 1:1	type
					Product Customer Drawing
dr					
eng					
chr					
app					
sheet	revision	P	P		
index	sheet	1	2		

X-ON Electronics

Largest Supplier of Electrical and Electronic Components

Click to view similar products for [Headers & Wire Housings](#) category:

Click to view products by [Amphenol](#) manufacturer:

Other Similar products are found below :

[892-18-020-10-001101](#) [58102-G61-06LF](#) [582553-1](#) [0009485154](#) [009176003701906](#) [0050291907](#) [LY20-4P-DT1-P1E-BR](#) [02.125.8002.8](#)
[609-3404](#) [61062-3](#) [622-0430](#) [622-3653LF](#) [63453-116](#) [636-1030](#) [636-1427](#) [636-3427](#) [636-4007](#) [641938-9](#) [641991-4](#) [644827-2](#) [65817-010LF](#)
[65817-015LF](#) [65863-015LF](#) [66207-023LF](#) [67095-007LF](#) [67601157](#) [68648-049](#) [70.362.1628.0](#) [70-4210](#) [70-4226B](#) [70-4853B](#) [707-5020](#) [707-5028](#) [71.350.2428.0](#) [71918-208LF](#) [71961-016LF](#) [733-134](#) [733-162](#) [754199-000](#) [760-3052](#) [787-8014-00](#) [79531-3000](#) [FCN-360C032-B](#) [FCN-367T-T012/H](#) [FCN-723D010/2](#) [80.063.4001.1](#) [800-90-001-10-001000](#) [800-90-010-10-002000](#) [801-43-002-10-013000](#) [801-43-006-10-002000](#)