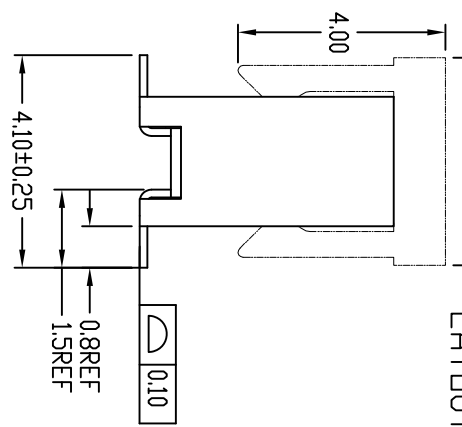
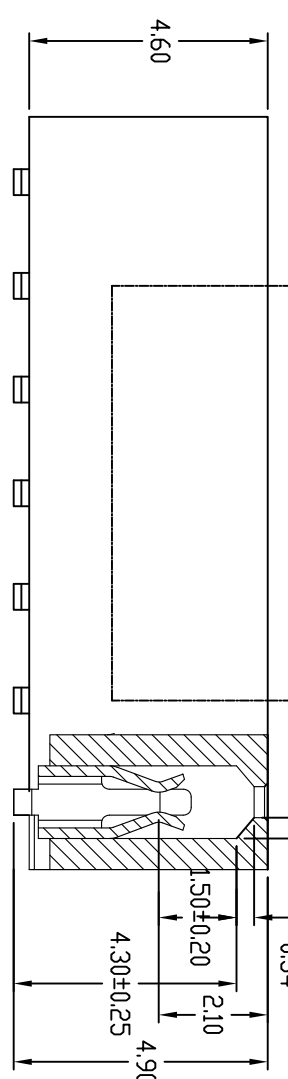


RECOMMENDED PCB LAYOUT TOLERANCE ±0.05



1	2	3	4
<p>spec ref -</p> <p>tolerance std ISD 406 ISD 1101</p> <p>surface ISD 1302</p>		<p>dr: Guomin Sun 2015-01-28</p> <p>eng: Guomin Sun 2015-01-28</p> <p>chr: -</p> <p>appr: Tim Yao 2015-01-28</p>	
<p>TOLERANCES UNLESS OTHERWISE SPECIFIED</p> <p>linear 0X ±0.50 0XX ±0.25 0XXX ±0.05</p> <p>angular 0° ±3°</p>		<p>projection</p> <p>product family</p> <p>Mintek</p> <p>size A3</p> <p>scale 10:1</p>	
<p>www.fci.com</p> <p>MINITEK 2.0MM LPVCC SINGLE ROW SMT ASSY</p>		<p>Product - Customer Drw</p> <p>sheet 1 of 3</p>	
<p>rev B</p> <p>10129334</p> <p>EX-N-2808</p> <p>RELASD</p>		<p>Product - Customer Drw</p> <p>sheet 1 of 3</p>	

1 2 3 4

PRODUCT NO	POSITIONS	DIM. A	DIM.B
10129334-XX03LF	1 X 3	4.00	6.60
10129334-XX04LF	1 X 4	6.00	8.60
10129334-XX05LF	1 X 5	8.00	10.60
10129334-XX06LF	1 X 6	10.00	12.60
10129334-XX07LF	1 X 7	12.00	14.60
10129334-XX08LF	1 X 8	14.00	16.60
10129334-XX09LF	1 X 9	16.00	18.60
10129334-XX10LF	1 X 10	18.00	20.60
10129334-XX11LF	1 X 11	20.00	22.60
10129334-XX12LF	1 X 12	22.00	24.60
10129334-XX13LF	1 X 13	24.00	26.60
10129334-XX14LF	1 X 14	26.00	28.60
10129334-XX15LF	1 X 15	28.00	30.60
10129334-XX16LF	1 X 16	30.00	32.60
10129334-XX17LF	1 X 17	32.00	34.60
10129334-XX18LF	1 X 18	34.00	36.60
10129334-XX19LF	1 X 19	36.00	38.60
10129334-XX20LF	1 X 20	38.00	40.60
10129334-XX21LF	1 X 21	40.00	42.60
10129334-XX22LF	1 X 22	42.00	44.60
10129334-XX23LF	1 X 23	44.00	46.60
10129334-XX24LF	1 X 24	46.00	48.60
10129334-XX25LF	1 X 24	48.00	50.60

PLATING OPTIONS OVER CONTACT AREA
0 = 3u" Au OVER 50u" Ni
1 = 10u" Au OVER 50u" Ni
2 = 15u" Au OVER 50u" Ni
3 = 30u" Au OVER 50u" Ni
4 = 2u" Au OVER 50u" Ni
5 = 6u" Au OVER 50u" Ni



Copyright FCI.

D

C

B

A

dir	GuoMin Sun	2015-01-28	projection		mm	size	A3	scale	10:1
eng	GuoMin Sun	2015-01-28	product family		Minitek	ecm no	10129334	ELX-N-22018	RELEASED
chr	-	-				rel level			
appr	Tim Yao	2015-01-28							

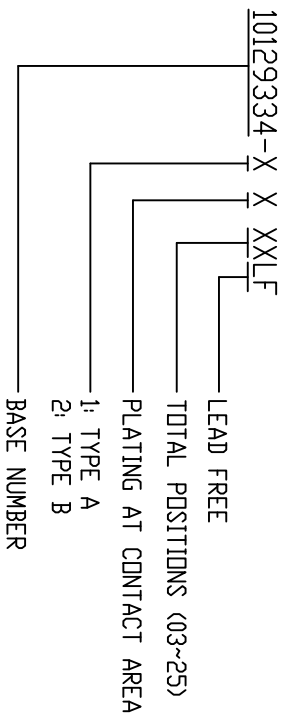
FCI
MINITEK 2.0MM LPVCC
SINGLE ROW SMT ASSY

Product - Customer Drw
10129334
sheet 2 of 3

1 2 3 4

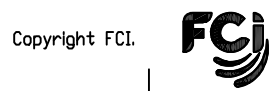
NOTES:

1. HOUSING MATERIAL : HIGH THERMOPLASTIC PLASTIC.
2. TERMINAL MATERIAL : COPPER ALLOY.
3. TERMINAL RETENTION FORCE 0.20kg/PER PIN
4. GOLD 1u" OVER 50u" NI PLATING ON SOLDER TAILS
5. PRODUCT DESCRIPTION CODE:



6. PACKAGING
 - (a) 10129334-XXXXLF ---- STD PACKAGING IN TUBE.
 - (b) 10129334-XXXXTRLF ---- TAPE AND REEL PACKAGING WITH PICK-UP CAP.
 - (c) 10129334-XXXXTRNLF ---- TAPE AND REEL PACKAGING WITHOUT PICK-UP CAP.

7. THE HOUSING WILL WITHSTAND EXPOSURE TO 255°C PEAK TEMPERATURE FOR 10 SECONDS IN A CONVECTION, INFRA-RED OR VAPOR PHASE REFLOW OVEN.
8. THIS PRODUCT MEETS EUROPEAN UNION DIRECTIVES AND OTHER COUNTRY REGULATIONS AS DESCRIBED IN GS-22-008.
9. THIS PRODUCT IS BOTTOM ENTRY TYPE
10. PRODUCT SPECIFICATION:GS-12-1306



Copyright FCI.

dr	GuoJun Sun	2015-01-28			size	A3	scale	101
eng	GuoJun Sun	2015-01-28						
chr	-	-		Minittek	ech no	rel level	RELEASED	-
appr	Tim Yao	2015-01-28						
			Minittek 2.0MM LPVCC SINGLE ROW SMT ASSY			Product - Customer Dr w		sheet 3 of 3
www.fci.com cat. no.			Product - Customer Dr w		sheet 3 of 3		rev B	

X-ON Electronics

Largest Supplier of Electrical and Electronic Components

Click to view similar products for [Power to the Board](#) category:

Click to view products by [Amphenol](#) manufacturer:

Other Similar products are found below :

[10131318-08512GRLF](#) [6450171-4](#) [6450552-7](#) [6600323-8](#) [6643429-1](#) [6646040-2](#) [6651939-1](#) [6766604-1](#) [120959-1](#) [1393557-2](#) [1393532-2](#)
[1393532-3](#) [1393532-4](#) [1393557-1](#) [1600812-5](#) [1-6450861-2](#) [1645595-1](#) [1743490-1](#) [1744132-7](#) [1761122-1](#) [1766169-1](#) [1766250-1](#) [18362](#)
[1892109-1](#) [1-967627-6](#) [2226808-1](#) [2-6450860-5](#) [2-6450860-6](#) [2-6450870-0](#) [93003-0502](#) [953552-1](#) [1-6450161-4](#) [1-6450850-6](#) [1645526-2](#) [1-](#)
[6600130-0](#) [1743419-1](#) [1766150-1](#) [2005243-2](#) [211110-1](#) [2-6600130-2](#) [TE34-12-16P-F0](#) [5-6450830-6](#) [5646956-4](#) [36662-0005](#) [40585-3000](#) [4-](#)
[6450830-9](#) [4-6600333-3](#) [51142-0214](#) [10134048-911LF](#) [10130248-005LF](#)