

▶ SPRING CLAMP TERMINAL BLOCKS



The modular spring clamp terminal blocks solution is designed based on spring clamp technology to allow faster connection with reduced mounting time and maintenance cost. The spring design provides effortless wire insertion, making this solution easy to install.

The spring clamp terminal blocks solution is flexible and is suitable for a variety of applications with standard, ground and multilevel types. Conductor sizes ranges from 2.5mm² to 10.0mm².



TARGET MARKETS

- Control Cabinets for Machinery
- Control Cabinets for Buildings
- Power Distribution Cabinets
- Process Automation

Spring Clamp Terminal Blocks

FEATURES

- Spring clamp technology
- Comprehensive range of wire cross section
- Compact design
- Large connection space
- Optimum guidance for the screwdriver
- Good contact stability – permanently
- Vibration resistance clamp
- RoHS compliant, lead-free, halogen-free

BENEFITS

- Reduces the mounting and maintenance cost; cost saving
- Complete product offering for all customer needs
- Space saving
- Enables rigid and flexible conductors
- Easy to install
- Maintenance-free
- Stable and durable connections
- Meets environmental, health and safety requirements

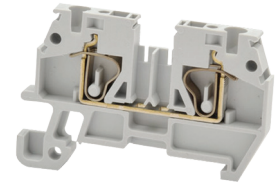
▶ SPRING CLAMP TERMINAL BLOCKS

SPRING CLAMP TERMINAL BLOCKS

Conductor Range – 2.5 to 4.0mm²

Technical Information

Rated Cross Section (mm ²)	Rigid Conductor (mm ²)	Flexible Conductor (mm ²)	Wire Gauge (AWG)	Dimension (Length x Height x Thickness) (mm)
2.5–4.0	1.0–4.0	1.0–4.0	24–12	53 x 28.5 x 5



Approval	Voltage Rating (V)	Current Rating (A)
UL	600	20
CSA	600	20
VDE	630	24
Kema EX	II 2 GD Eex and II 03ATEX2118 U	

Part Number – Spring Clamp Terminal Blocks

Color	Part Number	Quantity (Pieces) per pack
Grey	10134336-001LF	50
Blue	10134336-002LF	

Part Number – Accessories

Description	Part Number	Quantity (Pieces) per pack	Page
End Bracket width 9mm	10134389-001LF	50	61
End Bracket width 6mm	10134390-001LF		61
Snap on End Bracket	10134391-001LF		61
End Plate	10134342-001LF		60
Plug-in Jumper package 2 Poles	10134273-001LF	100	62
Plug-in Jumper package 3 Poles	10134273-002LF		62
Plug-in Jumper package 24 Poles	10134273-003LF	5	62
Cutting tool for plug-in jumper	10134271-001LF	1	62
Test Plug Adapter	10134276-001LF	10	61
Test Plug Adapter	10134276-002LF		61

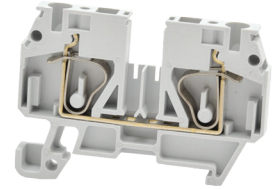
▶ SPRING CLAMP TERMINAL BLOCKS

SPRING CLAMP TERMINAL BLOCKS

Conductor Range – 4.0 to 6.0mm²

Technical Information

Rated Cross Section (mm ²)	Rigid Conductor (mm ²)	Flexible Conductor (mm ²)	Wire Gauge (AWG)	Dimension (Length x Height x Thickness) (mm)
4.0–6.0	1.5–6.0	1.5–6.0	24–10	53 x 34.5 x 6



Approval	Voltage Rating (V)	Current Rating (A)
UL	600	30
CSA	600	30
VDE	630	32
Kema EX	II 2 GD Eex and II 03ATEX2118 U	

Part Number – Spring Clamp Terminal Blocks

Color	Part Number	Quantity (Pieces) per pack
Grey	10134337-001LF	50
Blue	10134337-002LF	

Part Number – Accessories

Description	Part Number	Quantity (Pieces) per pack	Page
End Bracket width 9mm	10134389-001LF	50	61
End Bracket width 6mm	10134390-001LF		61
Snap on End Bracket	10134391-001LF		61
End Plate	10134343-001LF		60
Plug-in Jumper package 2 Poles	10134272-001LF	100	62
Plug-in Jumper package 3 Poles	10134272-002LF		62
Plug-in Jumper package 24 Poles	10134272-003LF	5	62
Cutting tool for plug-in jumper	10134271-002LF	1	62
Test Plug Adapter	10134276-001LF	10	61
Test Plug Adapter	10134276-002LF		61

▶ SPRING CLAMP TERMINAL BLOCKS

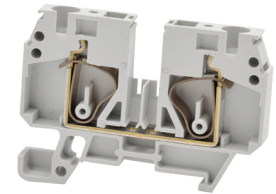
SPRING CLAMP TERMINAL BLOCKS

Conductor Range – 6.0 to 10.0mm²

Technical Information

Rated Cross Section (mm ²)	Rigid Conductor (mm ²)	Flexible Conductor (mm ²)	Wire Gauge (AWG)	Dimension (Length x Height x Thickness) (mm)
6.0–10.0	1.5–10.0	1.5–10.0	22–8	63 x 36.5 x 8

Approval	Voltage Rating (V)	Current Rating (A)
cURus	600	45



Part Number – Spring Clamp Terminal Blocks

Color	Part Number	Quantity (Pieces) per pack
Grey	10134338-001LF	50
Blue	10134338-002LF	

Part Number – Accessories

Description	Part Number	Quantity (Pieces) per pack	Page
End Bracket width 9mm	10134389-001LF	50	61
End Bracket width 6mm	10134390-001LF		61
Snap on End Bracket	10134391-001LF		61
End Plate	10134344-001LF		60
Plug-in Jumper package 2 Poles	10134275-001LF	100	62
Plug-in Jumper package 3 Poles	10134275-002LF		62
Plug-in Jumper package 24 Poles	10134275-003LF	5	62
Test Plug Adapter	10134276-001LF	10	61
Test Plug Adapter	10134276-002LF		61
No tools needed for the Plug-in Jumper			

▶ SPRING CLAMP TERMINAL BLOCKS

SPRING GROUND TERMINAL BLOCKS

Conductor Range – 2.5 to 4.0mm²

Technical Information

Rated Cross Section (mm ²)	Level	Rigid Conductor (mm ²)	Flexible Conductor (mm ²)	Wire Gauge (AWG)	Dimension (Length x Height x Thickness) (mm)
2.5-4.0	1	1.0-4.0	1.0-4.0	24-12	53 x 28.5 x 5



Approval	Voltage Rating (V)	Current Rating (A)
Kema EX	II 2 GD Eex and II 03ATEX2118 U	

Part Number – Spring Ground Terminal Blocks

Color	Part Number	Quantity (Pieces) per pack
Yellow Green	10134348-001LF	50

Part Number – Accessories

Description	Part Number	Quantity (Pieces) per pack	Page
End Bracket width 9mm	10134389-001LF	50	61
End Bracket width 6mm	10134390-001LF		61
Snap on End Bracket	10134391-001LF		61
End Plate	10134342-001LF		60

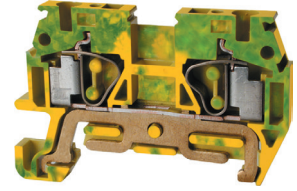
▶ SPRING CLAMP TERMINAL BLOCKS

SPRING GROUND TERMINAL BLOCKS

Conductor Range – 4.0 to 6.0mm²

Technical Information

Rated Cross Section (mm ²)	Level	Rigid Conductor (mm ²)	Flexible Conductor (mm ²)	Wire Gauge (AWG)	Dimension (Length x Height x Thickness) (mm)
4.0–6.0	1	1.5–6.0	1.5–6.0	24–10	58 x 34.5 x 6



Approval	Voltage Rating (V)	Current Rating (A)
Kema EX	II 2 GD Eex and II 03ATEX2118 U	

Part Number – Spring Ground Terminal Blocks

Color	Part Number	Quantity (Pieces) per pack
Yellow Green	10134349–001LF	50

Part Number – Accessories

Description	Part Number	Quantity (Pieces) per pack	Page
End Bracket width 9mm	10134389–001LF	50	61
End Bracket width 6mm	10134390–001LF		61
Snap on End Bracket	10134391–001LF		61
End Plate	10134343–001LF		60

▶ SPRING CLAMP TERMINAL BLOCKS

SPRING GROUND TERMINAL BLOCKS

Conductor Range – 6.0 to 10.0mm²

Technical Information

Rated Cross Section (mm ²)	Level	Rigid Conductor (mm ²)	Flexible Conductor (mm ²)	Wire Gauge (AWG)	Dimension (Length x Height x Thickness) (mm)
6.0 -10.0	1	1.5-10.0	1.5-10.0	22-8	63 x 36.5 x 8
Approval		Voltage Rating (V)		Current Rating (A)	
cURus		-		-	



Part Number – Spring Ground Terminal Blocks

Color	Part Number	Quantity (Pieces) per pack
Yellow Green	10134350-001LF	50

Part Number – Accessories

Description	Part Number	Quantity (Pieces) per pack	Page
End Bracket width 9mm	10134389-001LF	50	61
End Bracket width 6mm	10134390-001LF		61
Snap on End Bracket	10134391-001LF		61
End Plate	10134344-001LF		60

▶ SPRING CLAMP TERMINAL BLOCKS

SPRING GROUND TERMINAL BLOCKS

Conductor Range – 2.5 to 4.0mm², 1+2 Levels

Technical Information

Rated Cross Section (mm ²)	Level	Rigid Conductor (mm ²)	Flexible Conductor (mm ²)	Wire Gauge (AWG)	Dimension (Length x Height x Thickness) (mm)
2.5–4.0	1+2	1.0–4.0	1.0–4.0	24–12	68.5 x 28.5 x 5



Approval	Voltage Rating (V)	Current Rating (A)
cURus	–	–

Part Number – Spring Ground Terminal Blocks

Color	Part Number	Quantity (Pieces) per pack
Yellow Green	10134351–001LF	25

Part Number – Accessories

Description	Part Number	Quantity (Pieces) per pack	Page
End Bracket width 9mm	10134389–001LF	50	61
End Bracket width 6mm	10134390–001LF		61
Snap on End Bracket	10134391–001LF		61
End Plate	10134347–001LF		60

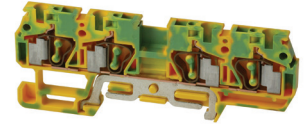
▶ SPRING CLAMP TERMINAL BLOCKS

SPRING GROUND TERMINAL BLOCKS

Conductor Range – 2.5 to 4.0mm², 2 Levels

Technical Information

Rated Cross Section (mm ²)	Level	Rigid Conductor (mm ²)	Flexible Conductor (mm ²)	Wire Gauge (AWG)	Dimension (Length x Height x Thickness) (mm)
2.5–4.0	2	1.0–4.0	1.0–4.0	24–12	87.5 x 28.5 x 5



Approval	Voltage Rating (V)	Current Rating (A)
cURus	–	–

Part Number – Spring Ground Terminal Blocks

Color	Part Number	Quantity (Pieces) per pack
Yellow Green	10134352–001LF	25

Part Number – Accessories

Description	Part Number	Quantity (Pieces) per pack	Page
End Bracket width 9mm	10134389–001LF	50	61
End Bracket width 6mm	10134390–001LF		61
Snap on End Bracket	10134391–001LF		61
End Plate	10134346–001LF		60

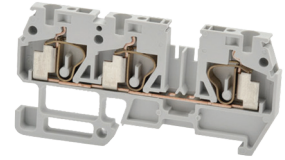
▶ SPRING CLAMP TERMINAL BLOCKS

SPRING MULTILEVEL TERMINAL BLOCKS

Conductor Range – 2.5 to 4.0mm², 1+2 Levels

Technical Information

Rated Cross Section (mm ²)	Level	Rigid Conductor (mm ²)	Flexible Conductor (mm ²)	Wire Gauge (AWG)	Dimension (Length x Height x Thickness) (mm)
2.5–4.0	1+2	1.0–4.0	1.0–4.0	24–12	68.5 x 28.5 x 5



Approval	Voltage Rating (V)	Current Rating (A)
UL	600	20
CSA	600	20
VDE	630	24
Kema EX	II 2 GD Eex and II 03ATEX2118 U	

Part Number – Spring Multilevel Terminal Blocks

Color	Part Number	Quantity (Pieces) per pack
Grey	10134339-001LF	25
Blue	10134339-002LF	

Part Number – Accessories

Description	Part Number	Quantity (Pieces) per pack	Page
End Bracket width 9mm	10134389-001LF	50	61
End Bracket width 6mm	10134390-001LF		61
Snap on End Bracket	10134391-001LF		61
End Plate	10134347-001LF	25	60
Plug-in Jumper package 2 Poles	10134273-001LF	100	62
Plug-in Jumper package 3 Poles	10134273-002LF		62
Plug-in Jumper package 24 Poles	10134273-003LF	5	62
Cutting tool for plug-in jumper	10134271-001LF	1	62
Test Plug Adapter	10134276-001LF	10	61
Test Plug Adapter	10134276-002LF		61

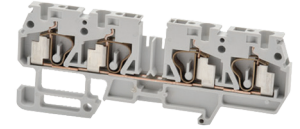
▶ SPRING CLAMP TERMINAL BLOCKS

SPRING MULTILEVEL TERMINAL BLOCKS

Conductor Range – 2.5 to 4.0mm², 2 Levels

Technical Information

Rated Cross Section (mm ²)	Level	Rigid Conductor (mm ²)	Flexible Conductor (mm ²)	Wire Gauge (AWG)	Dimension (Length x Height x Thickness) (mm)
2.5-4.0	2	1.0-4.0	1.0-4.0	24-12	87.5 x 28.5 x 5



Approval	Voltage Rating (V)	Current Rating (A)
UL	600	20
CSA	600	20
VDE	630	24
Kema EX	II 2 GD Eex and II 03ATEX2118 U	

Part Number – Spring Multilevel Terminal Blocks

Color	Part Number	Quantity (Pieces) per pack
Grey	10134340-001LF	25
Blue	10134340-002LF	

Part Number – Accessories

Description	Part Number	Quantity (Pieces) per pack	Page
End Bracket width 9mm	10134389-001LF	50	61
End Bracket width 6mm	10134390-001LF		61
Snap on End Bracket	10134391-001LF		61
End Plate	10134346-001LF	25	60
Plug-in Jumper package 2 Poles	10134273-001LF	100	62
Plug-in Jumper package 3 Poles	10134273-002LF		62
Plug-in Jumper package 24 Poles	10134273-003LF	5	62
Cutting tool for plug-in jumper	10134271-001LF	1	62
Test Plug Adapter	10134276-001LF	10	61
Test Plug Adapter	10134276-002LF		61

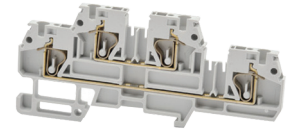
▶ SPRING CLAMP TERMINAL BLOCKS

SPRING MULTILEVEL TERMINAL BLOCKS

Conductor Range – 2.5 to 4.0mm², 2 Levels

Technical Information

Rated Cross Section (mm ²)	Level	Rigid Conductor (mm ²)	Flexible Conductor (mm ²)	Wire Gauge (AWG)	Dimension (Length x Height x Thickness) (mm)
2.5–4.0	2	1.0–4.0	1.0–4.0	24–12	98 x 37.5 x 5



Approval	Voltage Rating (V)	Current Rating (A)
UL	600	20
CSA	600	20
VDE	630	24
Kema EX	II 2 GD Eex and II 03ATEX2118 U	

Part Number – Spring Multilevel Terminal Blocks

Color	Part Number	Quantity (Pieces) per pack
Grey	10134341-001LF	25
Blue	10134341-002LF	

Part Number – Accessories

Description	Part Number	Quantity (Pieces) per pack	Page
End Bracket width 9mm	10134389-001LF	50	61
End Bracket width 6mm	10134390-001LF		61
Snap on End Bracket	10134391-001LF		61
End Plate	10134345-001LF	25	60
Plug-in Jumper package 2 Poles	10134273-001LF	100	62
Plug-in Jumper package 3 Poles	10134273-002LF		62
Plug-in Jumper package 24 Poles	10134273-003LF	5	62
Cutting tool for plug-in jumper	10134271-001LF	1	62
Test Plug Adapter	10134276-001LF	10	61
Test Plug Adapter	10134276-002LF		61

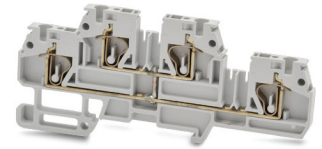
▶ SPRING CLAMP TERMINAL BLOCKS

SPRING MULTILEVEL TERMINAL BLOCKS

Conductor Range – 2.5 to 4.0mm², 2 Levels, Unipolar

Technical Information

Rated Cross Section (mm ²)	Level	Rigid Conductor (mm ²)	Flexible Conductor (mm ²)	Wire Gauge (AWG)	Dimension (Length x Height x Thickness) (mm)	Notes
2.5–4.0	2	1.0–4.0	1.0–4.0	24–12	98 x 37.5 x 5	Unipolar



Approval	Voltage Rating (V)	Current Rating (A)
UL	600	20
CSA	600	20
VDE	630	24
Kema EX	II 2 GD Eex and II 03ATEX2118 U	

Part Number – Spring Multilevel Terminal Blocks

Color	Part Number	Quantity (Pieces) per pack
Grey	10134341-006LF	10
Blue	10134341-007LF	

Part Number – Accessories

Description	Part Number	Quantity (Pieces) per pack	Page
End Bracket width 9mm	10134389-001LF	50	61
End Bracket width 6mm	10134390-001LF		61
Snap on End Bracket	10134391-001LF		61
End Plate	10134345-001LF	25	60
Plug-in Jumper package 2 Poles	10134273-001LF	100	62
Plug-in Jumper package 3 Poles	10134273-002LF		62
Plug-in Jumper package 24 Poles	10134273-003LF	5	62
Cutting tool for plug-in jumper	10134271-001LF	1	62
Test Plug Adapter	10134276-001LF	10	61
Test Plug Adapter	10134276-002LF		61

X-ON Electronics

Largest Supplier of Electrical and Electronic Components

Click to view similar products for [Test Plugs & Test Jacks](#) category:

Click to view products by [Amphenol](#) manufacturer:

Other Similar products are found below :

[01-2601-4-0210](#) [01-2601-4-0212](#) [01-2604-4-0212](#) [01-2604-5-0210](#) [01-2150-1-0312](#) [01-2350-1-02](#) [01-2352-1-02](#) [01-2368-1-02](#) [01-2604-4-0210](#) [01-2604-5-0212](#) [01-2606-4-0210](#) [01-2606-4-0212](#) [01-2606-5-0212](#) [M39024/10-01G](#) [M39024/10-17G](#) [M39024/11-09G](#) [M39024/11-42](#) [M39024/11-43](#) [M39024/12-08](#) [707-5311](#) [707-5402-01-19](#) [707-5410](#) [923739-40-I](#) [R644543000](#) [R948161000](#) [R999351000](#) [1408-4](#) [1499-101](#) [1533-1](#) [1659559](#) [1659567](#) [1663921](#) [1663939](#) [1696-102](#) [174-R825B-EX](#) [NYS508-BU](#) [NYS508-O](#) [211-101](#) [RS100GBL](#) [RS250GBL](#) [251-102](#) [25-2251-2-03](#) [25-2259-2-03](#) [923743-16-I](#) [923743-24-I](#) [923743-28-I](#) [2854-BLU](#) [2970-BLK](#) [30-443G](#) [1680](#)