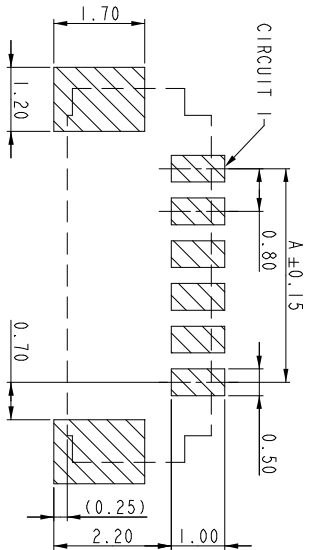
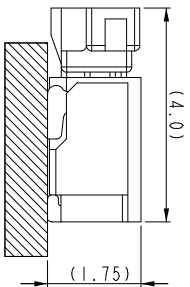
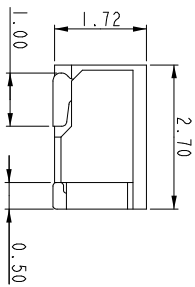
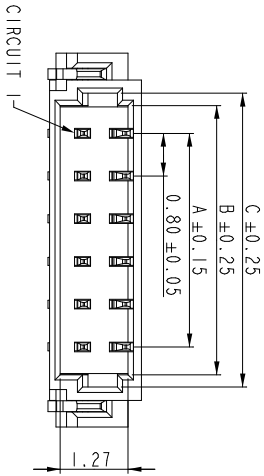
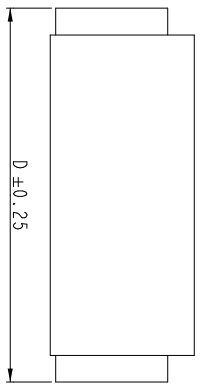
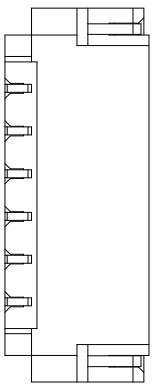


PRODUCT NUMBER
SEE PART NO. TABLE



TOLERANCE: ±0.05
RECOMMENDED P.C.B. Layout
TOP VIEW



NOTES:

1. MATERIAL: INSULATION(HALOGEN FREE): LCP, UL94V-0,GLOW WIRE COMPATIBLE CONTACT: COPPER ALLOY, t=0.15
2. MATE WITH RECEPTACLE: AFCI 10145492
3. THE INSULATION CAN WITHSTAND IR REFLOW 260°C FOR 10 SECONDS
4. PRODUCT SPEC: GS-12-1444
5. PACKAGING SPEC: GS-14-2616
6. ORDERING CODE: 10144041-XX X X X X LF

NO. OF PINS 02~24 PIN
INSULATION COLOR
O: CREAM
1: BLACK

PACKAGE
1: TAPE & REEL
CONTACT FINISH
1: TIN PLATED OVER NICKEL
2: GOLD FLASH OVER NICKEL

PIN	A	B	C	D	PIN	A	B	C	D
02	0.80	1.84	2.30	3.80	11	8.00	9.04	9.50	11.00
03	1.60	2.64	3.10	4.60	12	8.80	9.84	10.30	11.80
04	2.40	3.44	3.90	5.40	14	10.40	11.44	11.90	13.40
05	3.20	4.24	4.70	6.20	15	11.20	12.24	12.70	14.20
06	4.00	5.04	5.50	7.00	16	12.00	13.04	13.50	15.00
07	4.80	5.84	6.30	7.80	17	12.80	13.84	14.30	15.80
08	5.60	6.64	7.10	8.60	20	15.20	16.24	16.70	18.20
09	6.40	7.44	7.90	9.40	22	16.80	17.84	18.30	19.80
10	7.20	8.24	8.70	10.20	24	18.40	19.44	19.90	21.40

mat'l. code	ISO 1302	ISO 406	ISO 1101	projection	product family	MINITEK			
tolerance	tolerance unless otherwise specified	tolerance unless otherwise specified	tolerance unless otherwise specified	scale 1:1	title	0.8mm Pitch RA Header SMT			
ISO 1302	ISO 406	ISO 1101	projection	scale 1:1	dwg no	10144041			
tolerance unless otherwise specified	tolerance unless otherwise specified	tolerance unless otherwise specified	projection	scale 1:1	sheet 1 of 1	size A3			

sheet index	revision	sheet	1	4	5	6
sheet index	revision	sheet	1	4	5	6

X-ON Electronics

Largest Supplier of Electrical and Electronic Components

Click to view similar products for [Headers & Wire Housings](#) category:

Click to view products by [Amphenol](#) manufacturer:

Other Similar products are found below :

[892-18-020-10-001101](#) [58102-G61-06LF](#) [582553-1](#) [0009485154](#) [009176003701906](#) [0050291907](#) [LY20-4P-DT1-P1E-BR](#) [02.125.8002.8](#)
[609-3404](#) [61062-3](#) [622-0430](#) [622-3653LF](#) [63453-116](#) [636-1030](#) [636-1427](#) [636-3427](#) [636-4007](#) [641938-9](#) [641991-4](#) [644827-2](#) [65817-010LF](#)
[65817-015LF](#) [65863-015LF](#) [66207-023LF](#) [67095-007LF](#) [67601157](#) [68648-049](#) [70.362.1628.0](#) [70-4210](#) [70-4226B](#) [70-4853B](#) [707-5020](#) [707-](#)
[5028](#) [71.350.2428.0](#) [71918-208LF](#) [71961-016LF](#) [733-134](#) [733-162](#) [754199-000](#) [760-3052](#) [787-8014-00](#) [79531-3000](#) [FCN-360C032-B](#) [FCN-](#)
[367T-T012/H](#) [FCN-723D010/2](#) [80.063.4001.1](#) [800-90-001-10-001000](#) [800-90-010-10-002000](#) [801-43-002-10-013000](#) [801-43-006-10-002000](#)