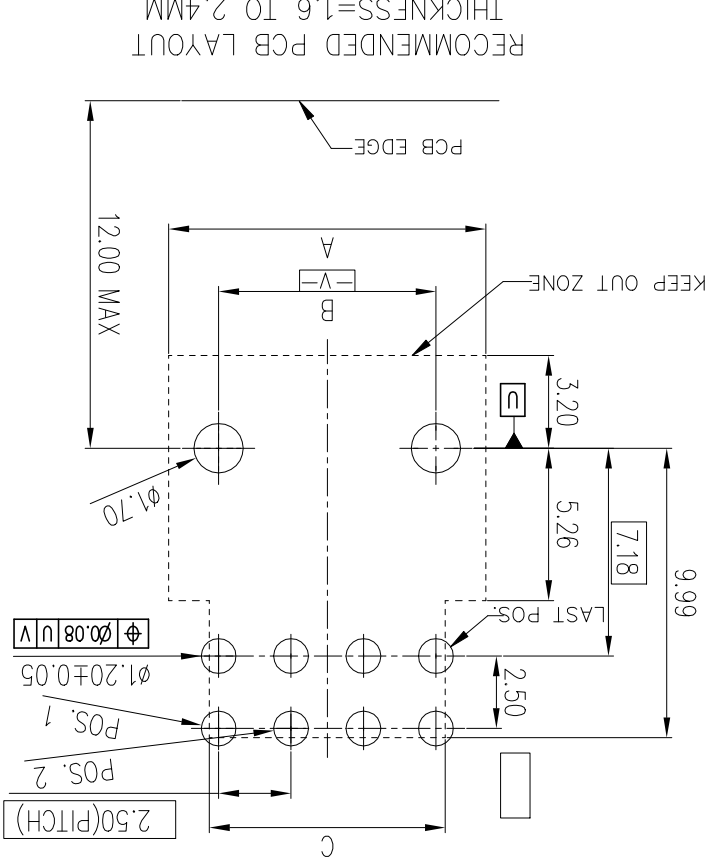
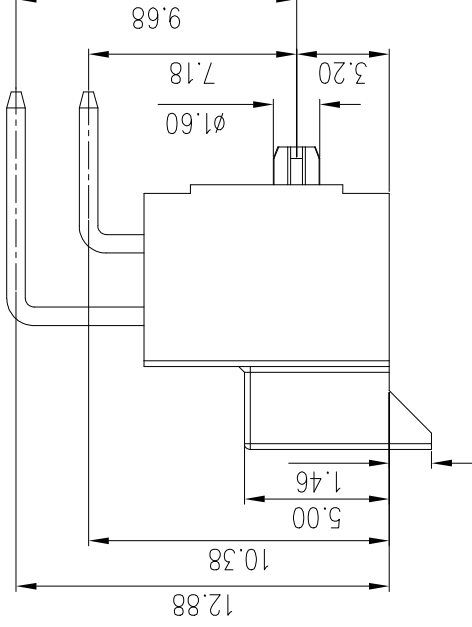
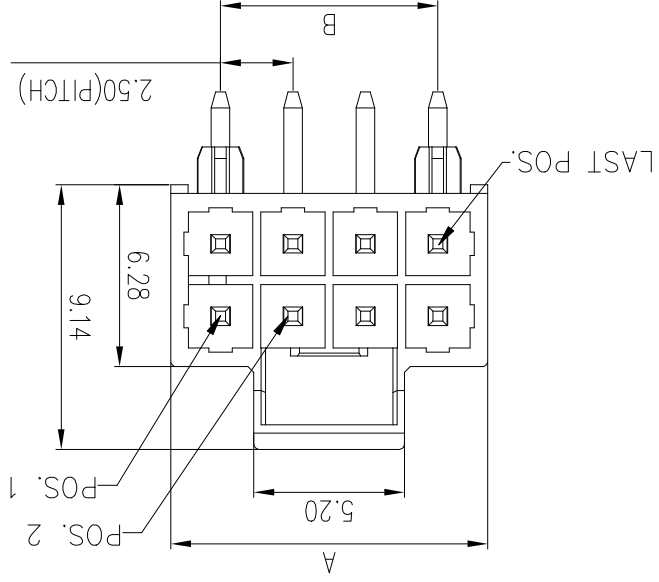
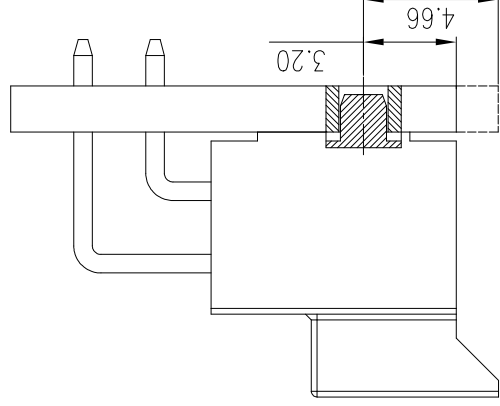


OPTION 1: LATCH FLUSH WITH PCB EDGE  
 OPTION 2: HOUSING BODY FLUSH WITH PCB EDGE



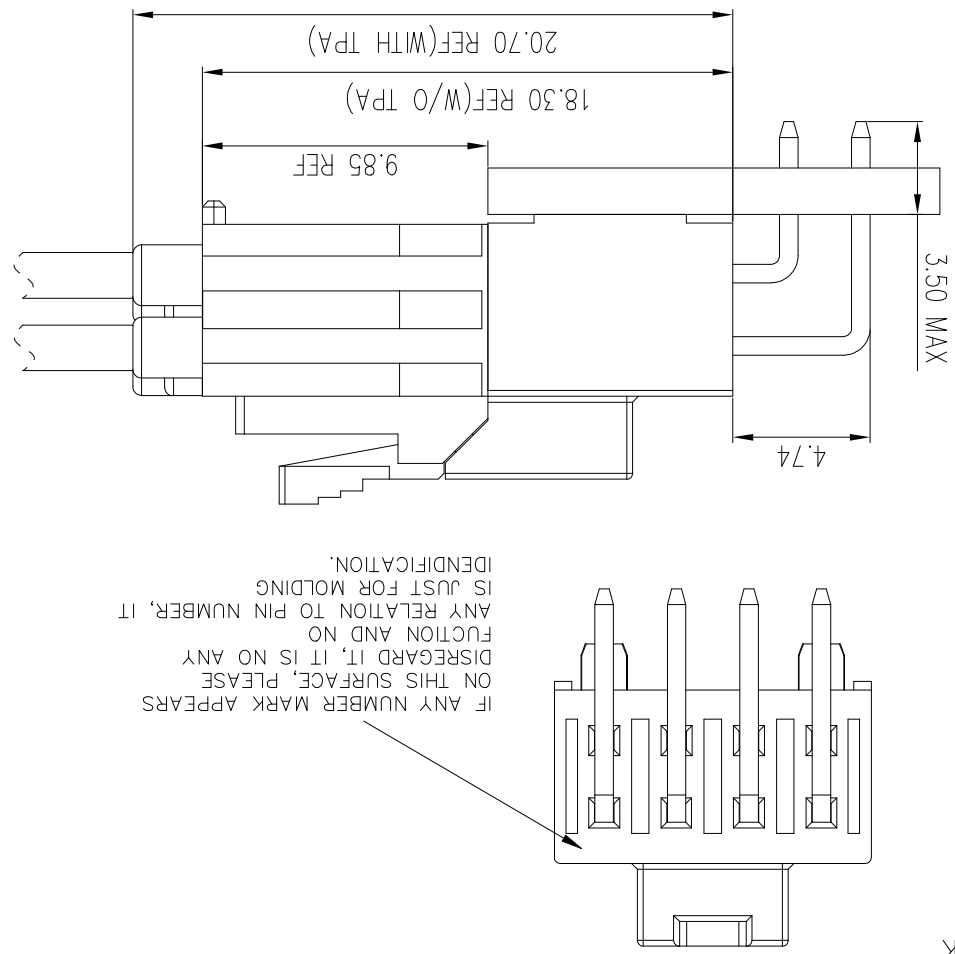
|             |          |          |            |              |                            |                    |            |
|-------------|----------|----------|------------|--------------|----------------------------|--------------------|------------|
| mat'l. code |          | ISO 1302 | ISO 406    | ISO 1101     | projection                 | product family     | MinitekPWR |
| itr         | ecn no   | dr       | date       | tolerances   | unless otherwise specified | title              |            |
| A           |          | TONY     | 2017-11-21 | angles       | linear                     | 2.5mm RA TH Header |            |
|             |          |          |            | 0±.2°        | linear                     |                    |            |
|             |          |          |            | 0.004, .25   | mm                         |                    |            |
|             |          |          |            | 0±.2°        | mm                         |                    |            |
|             |          |          |            | 0.004, .15   | mm                         |                    |            |
|             |          |          |            | scale        | 1:1                        |                    |            |
|             |          |          |            | dwg no       | 10146582                   |                    |            |
|             |          |          |            | sheet 1 of 3 | size                       | A3                 |            |
|             |          |          |            | type         | Product Customer Drawing   |                    |            |
| sheet       | revision | A        | A          | ppd          | TIM YAO                    | 2017-11-22         |            |
| index       | sheet    | 1        | 2          | chr          | ZK HU                      | 2017-11-22         |            |
|             |          |          |            | eng          | TONY LENG                  | 2017-11-22         |            |
|             |          |          |            | dr           | TONY LENG                  | 2017-11-22         |            |

Notes:  
 1. MATERIAL: HOUSING: LCP, HALOGEN FREE, GLOW WIRE COMPATIBLE  
 THIS HOUSING WILL WITHSTAND EXPOSURE TO 260.C PEAK  
 TEMP FOR 10S IN A REFLOW OVEN.  
 TERMINAL: BRASS  
 2. PLATING FINISHED:  
 CONTACT AREA: SEE PART NUMBER SCHEME  
 SOLDER AREA: TIN 60"MIN;  
 UNDER PLATING NICKEL 50"MIN;  
 3. PRODUCT SPEC: GS-12-1456  
 4. PACKAGING SPEC: GS-14-2610  
 5. USE WITH AF CI RECEPTACEL 10146580  
 6. PART NUMBER SCHEME:  
 10146582-XX X X LF

POS. CODE:  
 04: 4 POS.  
 06: 6 POS.  
 16: 16 POS.  
 LEAD FREE  
 INSULATION COLOR:  
 B: BLACK  
 N: NATURAL  
 CONTACT AREA PLATING:  
 0: 60" TIN  
 1: 15u" Au  
 2: 30u" Au

DIMENSIONAL & PART NO. TABLE:

| PART NO.        | POS | A     | B     |
|-----------------|-----|-------|-------|
| 10146582-04XXLF | 4   | 5.94  | 2.50  |
| 10146582-06XXLF | 6   | 8.44  | 5.00  |
| 10146582-08XXLF | 8   | 10.94 | 7.50  |
| 10146582-10XXLF | 10  | 13.44 | 10.00 |
| 10146582-12XXLF | 12  | 15.94 | 12.50 |
| 10146582-14XXLF | 14  | 18.44 | 15.00 |
| 10146582-16XXLF | 16  | 20.94 | 17.50 |



IF ANY NUMBER MARK APPEARS ON THIS SURFACE, PLEASE DISREGARD IT, IT IS NO ANY FUNCTION AND NO ANY RELATION TO PIN NUMBER, IT IS JUST FOR MOLDING IDENTIFICATION.

|             |           |            |                  |                                       |                |                      |                          |
|-------------|-----------|------------|------------------|---------------------------------------|----------------|----------------------|--------------------------|
| mat'l. code |           | ISO 1302   | ISO 406 ISO 1101 | projection                            | product family | MinitekPWR           |                          |
| ltr         | ecn no    | dr         | date             | tolerances unless otherwise specified | title          | 2.5mm RA TH Header   |                          |
| 0±.2°       | linear    | .004.25    | mm               | scale 1:1                             | dwg no         | 10146582             |                          |
| 0±.2°       | angles    | .0±.35     | mm               | scale 1:1                             | sheet no       | sheet 2 of 3 size A3 |                          |
| dr          | TONY LENG | 2017-11-22 | dr               | TONY LENG                             | 2017-11-22     | eng                  | TONY LENG                |
| chr         | ZK HU     | 2017-11-22 | chr              | ZK HU                                 | 2017-11-22     | appd                 | TIM YAO                  |
| sheet       | revision  | A A        | sheet            | revision                              | A A            | type                 | Product Customer Drawing |
| 1           | 2         | 3          | 1                | 2                                     | 3              | type                 | Product Customer Drawing |



## X-ON Electronics

Largest Supplier of Electrical and Electronic Components

*Click to view similar products for [Headers & Wire Housings](#) category:*

*Click to view products by [Amphenol](#) manufacturer:*

Other Similar products are found below :

[95000-104TRLF](#) [10135584-644402LF](#) [DF62W-EP2022PCA](#) [95000-106TRLF](#) [DF62W-2022SCA](#) [DF62W-EP2022PC](#) [2203348](#) [DF62W-2022SC](#) [1084018](#) [1029039](#) [1084017](#) [802-10-012-10-002000](#) [1112640](#) [1112639](#) [891-007-9SS-BST1T](#) [000-34000](#) [0008550134](#) [0009482033](#) [0009507031](#) [57102-F02-18ULF](#) [57102-S06-03LF](#) [57202-S52-04LF](#) [PCN6-15S-2.5E](#) [0039019024](#) [58102-G61-06LF](#) [582553-1](#) [0009485154](#) [0009508121](#) [0022285053](#) [0050291907](#) [018731A](#) [LY20-4P-DT1-P1E-BR](#) [02.125.8002.8](#) [60101931](#) [60598-1 \(Cut Strip\)](#) [M1625-3R/100](#) [61062-3](#) [61082-181009](#) [CSU011177004](#) [636-1427](#) [638009-1](#) [641938-9](#) [641991-4](#) [644168-1](#) [644827-2](#) [647662-1](#) [65039-019ELF](#) [65692-001LF](#) [65781-018](#) [65781-047](#)