

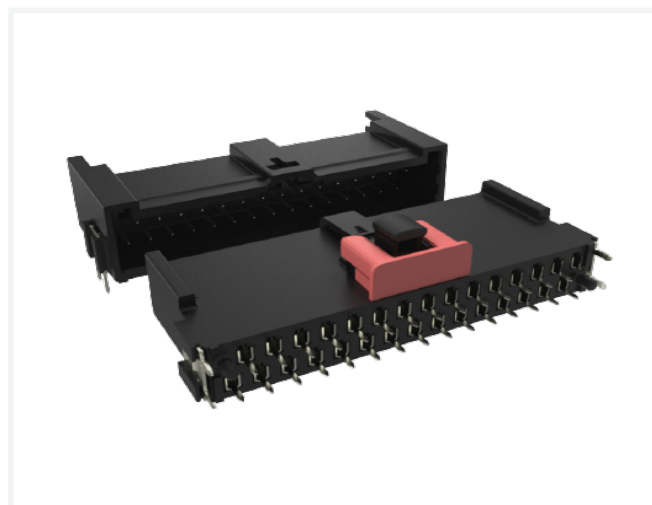
FlexLock® 2.54mm FPC-to-Board Connectors

AUTOMOTIVE GRADE CONNECTOR SYSTEM WITH FLEXIBLE SOLDERING

FlexLock® 2.54mm FPC-to-Board connectors are designed to address the growing demands of the automotive market. These compact USCAR-T2V2 compatible connectors have a nominal current carrying capacity of 3A per contact to support higher power application as well.

FlexLock® connectors are available in 10 to 30 positions in double row with vertical and horizontal TH and SMT configurations.

- USCAR-T2V2 compatible
- Reflow Tin plating to reduce mating force
- Available in 10 to 30 positions
- Terminal Position Assurance (TPA)
- Connector Position Assurance (CPA)



TARGET MARKETS



FEATURES

- Reflow Tin plating process for terminals
- Current rating of 3A per contact
- Terminal Position Assurance (TPA)
- Hold down design
- Connector positioning assurance (CPA)

BENEFITS

- Reduced mating and un-mating force
- Meets higher power Amps requirements
- Ensures proper terminal insertion position and retention
- Increases the board grip force
- Ensures that connectors are properly mated and locked together

TECHNICAL INFORMATION

MATERIAL

- Connector Contact: Copper alloy
- Housing: High temperature UL 94V-0
- Plating: Tin plated
 - 8u" GXT/Au

ELECTRICAL PERFORMANCE

- Voltage Rating: 48V AC/DC
- Insulation Resistance: 100M Ω min.
- Contact Resistance: 25m Ω max. (initial)
- Current Rating: 3A
- Low Level Contact Resistance: < 25m Ω
- Dielectric Withstand Voltage: 500V AC
- Temperature Rise: +55°C max. for 7.32A

MECHANICAL PERFORMANCE

- Durability: 10 cycles (tin), 30 cycles (gold)
- Mating /Un-mating Force: 75N max.
- Terminal Insertion Force: <5N max./pin
- Terminal Retention Force: 15N min.

ENVIRONMENTAL

- Operating Temperature Range: -40°C to +105°C

APPROVALS AND CERTIFICATIONS

- UL E66906

SPECIFICATIONS

- Product Specification: GS-12-1679
- PCB termination: 1.60mm
- Packaging Specification: GS-14-2781
- Application Specification: GS-20-0707

PACKAGING

- Header: Tape and reel
- Receptacle Housing: Tray

TARGET MARKETS/APPLICATIONS

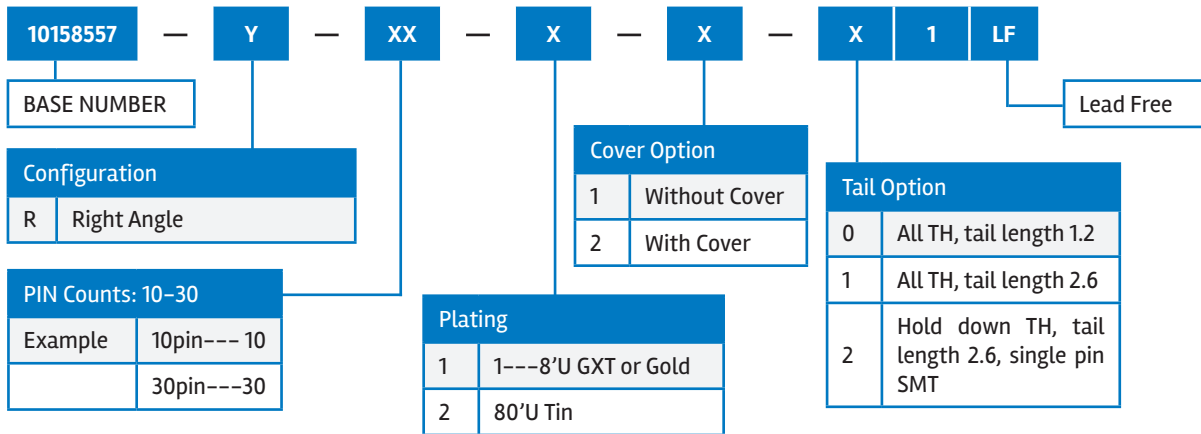


BMS (Battery Management System)
OBC (On Board Charge)
MCU (Micro Control Unit)

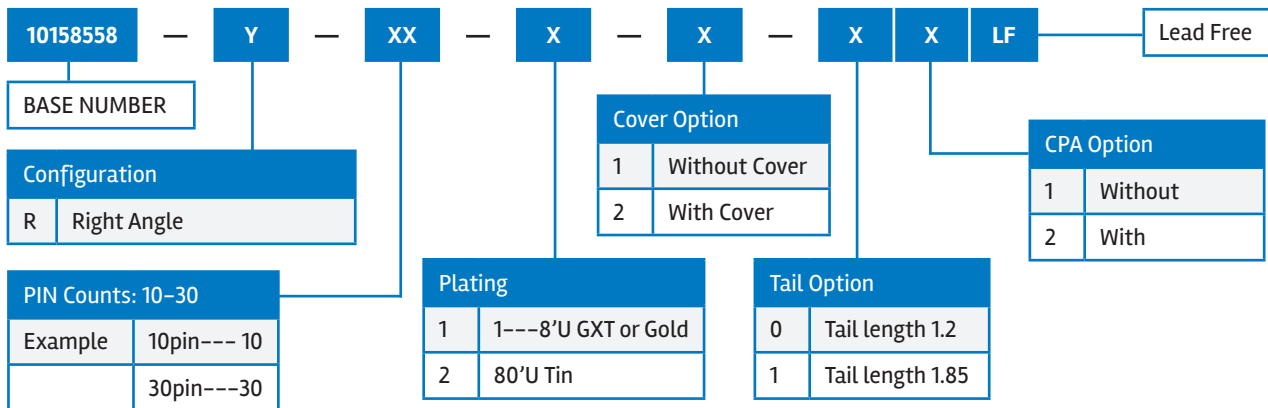


Robotics

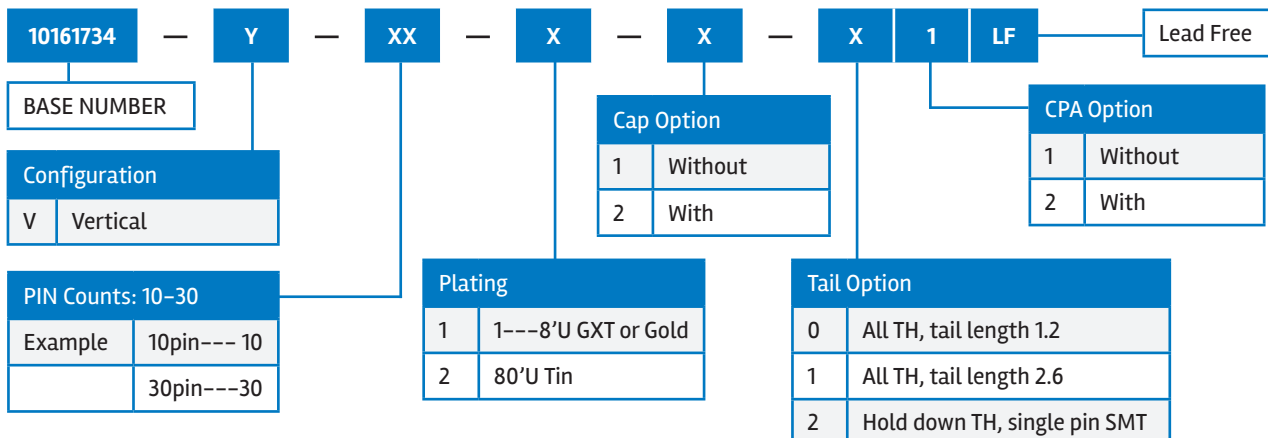
PART NUMBER SELECTOR – DOUBLE ROW R/A_ HEADER



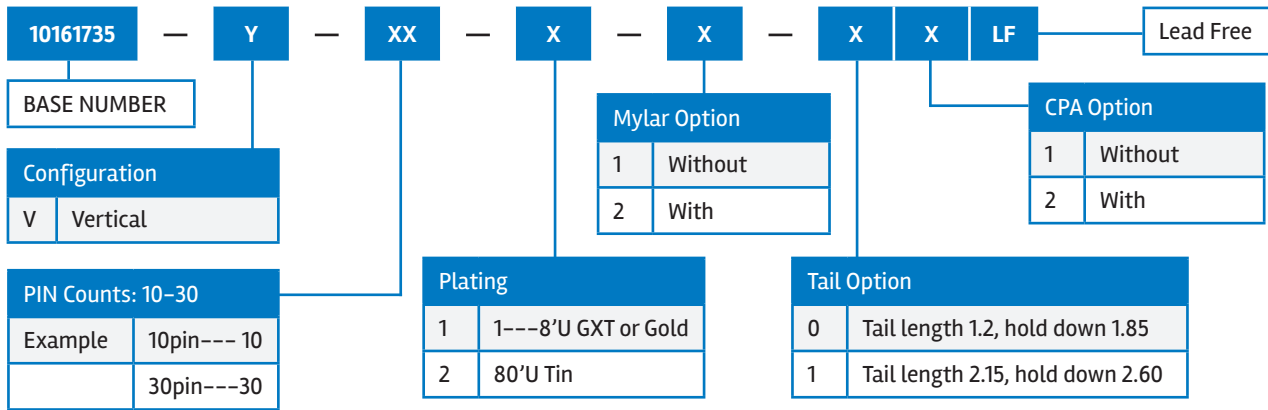
PART NUMBER SELECTOR – DOUBLE ROW R/A_ RECEPTACLE



PART NUMBER SELECTOR – DOUBLE ROW VERTICAL_ HEADER



PART NUMBER SELECTOR – DOUBLE ROW VERTICAL RECEPTACLE



PART NUMBERS

Description	Part Numbers
FlexLock®, 2.54mm FPC-to-Board Connector Platform, Board Header, 30 Position, Top Latch, Tin (preplated)	10158557-R302111LF
FlexLock®, 2.54mm FPC-to-Board Connector Platform, Receptacle, 30 Position, Top Latch, Tin (preplated)	10161735-V302011LF
FlexLock®, 2.54mm FPC-to-Board Connector Platform, Board Header, 28 Position, Top Latch, Tin (preplated)	10158557-R282111LF
FlexLock®, 2.54mm FPC-to-Board Connector Platform, Receptacle, 28 Position, Top Latch, Tin (preplated)	10158558-R282111LF
FlexLock®, 2.54mm FPC-to-Board Connector Platform, Board Header, 12 Position, Top Latch, Tin (preplated)	10158557-R122121LF
FlexLock®, 2.54mm FPC-to-Board Connector Platform, Receptacle, 12 Position, Top Latch, Tin (preplated)	10158558-R122111LF

X-ON Electronics

Largest Supplier of Electrical and Electronic Components

Click to view similar products for [Headers & Wire Housings](#) category:

Click to view products by [Amphenol](#) manufacturer:

Other Similar products are found below :

[892-18-020-10-001101](#) [58102-G61-06LF](#) [582553-1](#) [0009485154](#) [009176003701906](#) [0050291907](#) [LY20-4P-DT1-P1E-BR](#) [02.125.8002.8](#)
[609-3404](#) [61062-3](#) [622-0430](#) [622-3653LF](#) [63453-116](#) [636-1030](#) [636-1427](#) [636-3427](#) [636-4007](#) [641938-9](#) [641991-4](#) [644827-2](#) [65817-010LF](#)
[65817-015LF](#) [65863-015LF](#) [66207-023LF](#) [67095-007LF](#) [67601157](#) [68648-049](#) [70.362.1628.0](#) [70-4210](#) [70-4226B](#) [70-4853B](#) [707-5020](#) [707-](#)
[5028](#) [71.350.2428.0](#) [71918-208LF](#) [71961-016LF](#) [733-134](#) [733-162](#) [754199-000](#) [760-3052](#) [787-8014-00](#) [79531-3000](#) [FCN-360C032-B](#) [FCN-](#)
[367T-T012/H](#) [FCN-723D010/2](#) [80.063.4001.1](#) [800-90-001-10-001000](#) [800-90-010-10-002000](#) [801-43-002-10-013000](#) [801-43-006-10-002000](#)