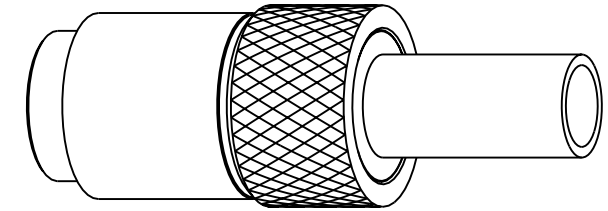


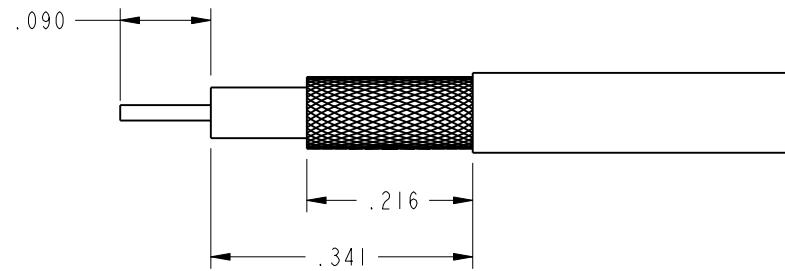
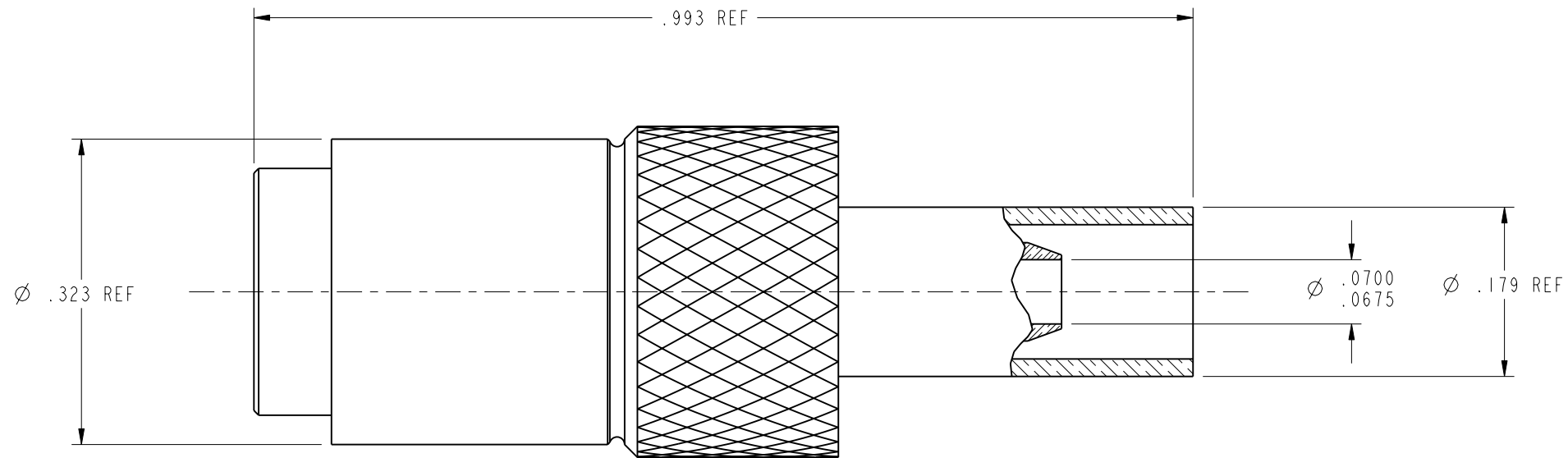
NOTES:

- MATERIALS OF CONSTRUCTION:
 BODY, WASHER & LOCKING SLEEVE = BRASS, NICKEL PLATED (.000100 THICK)
 MALE CONTACT = BRASS, GOLD PLATED (.000030 THICK)
 OUTER CONTACT: BeCu, GOLD PLATED (.000030 THICK)
 INSULATION: PTFE
 COIL SPRINGS (2) = STAINLESS STEEL, PASSIVATED
 BALLS (3) = INOX, PASSIVATED
 FERRULE = SEAMLESS COPPER, NICKEL PLATED (.000100 THICK)
- ELECTRICAL:
 A. IMPEDANCE = 75 OHMS
 B. FREQUENCY RANGE= 0-2 GHz
 C. RETURN LOSS = 20 dB @ 1 GHz
- CRIMP USING TOOL 227-944, DIE 227-1221-37 CAVITY "A" (.151 HEX)
 CRIMP CONTACT USING TOOL 227-1454, POSITIONER DANIELS TOOL # K1628.

102-799-7579DB		REVISIONS			
DRAWING NO.	REV	DESCRIPTION	DATE	ECO	APPR
THIRD ANGLE PROJ.	A	RELEASE TO MFG.	2/11/02	43970	KJC
	B	SEE SHEET 1	3/8/02	43985	CPM
	C	ADDED Ø.0700/.0675 DIM	3/15/02	43993	CPM
	D	DANIELS # WAS 615X-1715 SETTING 5	9/7/05	45715	CPM



SCALE 3.000



RECOMMENDED CABLE
 STRIPPING DIM'S.
 SCALE 4.000

CUSTOMER OUTLINE DRAWING
 ALL OTHER SHEETS ARE FOR INTERNAL USE ONLY

UNLESS OTHERWISE SPECIFIED, DIMENSIONS ARE IN INCHES AND TOLERANCES ARE: 2 PLACE DECIMAL ±.015 (0,381 mm) 3 PLACE DECIMAL ±.005 (0,127 mm) ANGLES ± 1°	MATERIAL	DRAWN M. PAROZZI	DATE 11-FEB-02	TITLE 75 OHM 1.0/2.3 PLUG FOR RG-179 TYPE CABLE DOUBLE BRAID		Amphenol RF Danbury, CT, USA Tainan, Taiwan Shenzhen, China www.amphenolrf.com	
	REFERENCE GEN# ASYM4_1023 615X-1715-100	ENGINEER K. CAPOZZI	DATE 11-FEB-02				
NOTICE - These drawings, specifications, or other data (1) are, and remain the property of Amphenol Corp. (2) must be returned upon request; and (3) are confidential and not to be disclosed to any person other than those to whom they are given by Amphenol Corp. The furnishing of these drawings, specifications, or other data by Amphenol Corp., or to any other person to anyone for any purpose is not to be regarded by implication or otherwise in any manner licensing, granting rights or permitting such holder or any other person to manufacture, use or sell any product, process or design, patented or otherwise, that may in any way be related to or disclosed by said drawings, specifications, or other data.	EAR 517	CAD FILE I:\1023\102-799-7579DB	CODE ID 74868	DWG SIZE B	DRAWING NO. 102-799-7579DB	SCALE: 6.0:1	SHEET 2 OF 2
						REV D	

X-ON Electronics

Largest Supplier of Electrical and Electronic Components

Click to view similar products for [RF Connectors / Coaxial Connectors](#) category:

Click to view products by [Amphenol](#) manufacturer:

Other Similar products are found below :

[8915-1511-000](#) [89674-0827](#) [6001-7071-019](#) [6002-7051-003](#) [6002-7551-202](#) [6059674-1](#) [619550-1](#) [630059-000](#) [M39030/3-01N](#) [M3933/25-36N](#) [6500-7071-046](#) [6769](#) [CX050L2AQ](#) [7002-1542-011](#) [7004-1512-000](#) [7009-1511-004](#) [7010-1511-000](#) [7029-1511-060](#) [7101-1541-010](#) [7101-1571-002](#) [7105-1521-002](#) [7145-1521-002](#) [7203-1571-003](#) [7209-1511-011](#) [7210-1511-015](#) [7210-1511-019](#) [73137-5015](#) [73216-2241](#) [7325-1512-000](#) [73404-2300](#) [7405-1521-005](#) [7405-1521-802](#) [7406-1521-005](#) [8527](#) [8547](#) [FS11V](#) [8808-1511-001](#) [9049-9513-000](#) [9074-9513-000](#) [9101-9573-002](#) [910A205F](#) [9130-9573-002](#) [PL11SC-026](#) [PL375-33](#) [PL40-5](#) [PL71-9](#) [PL74C-221](#) [PL75MC-217](#) [PL803-7](#) [980-8666-005](#)