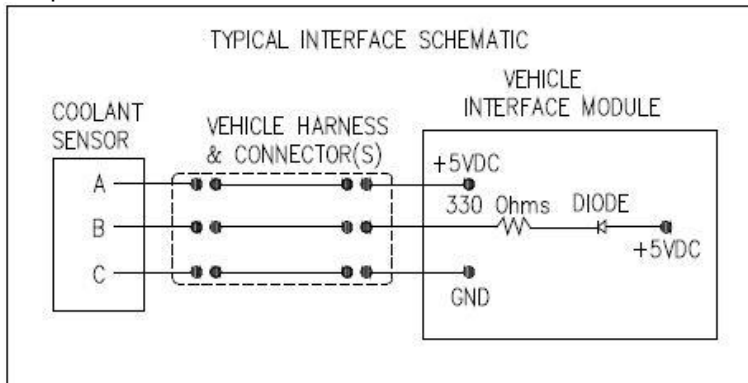


CASCO COOLANT SENSORS SPECIFICATIONS

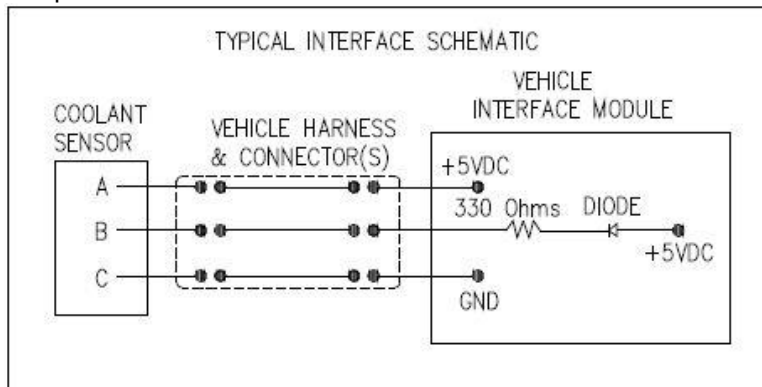
1. SENSOR P/N 1035100001

- **Thread size:** 1/4 – 18 NPTF, Standart Pipe Thread
- **Install torque:** 26 inch lbs Max.
- **Loctite Dryseal on the threads:** Yes
- **Connector:** Mates with Packard electric connector 12110293
Pin A - Power, Pin B - Output and Pin C - Ground
- **Operating pressure:** 20 PSI Max.
- **Electrical Specifications:**
Power = 4.75 – 5.25 VDC 12.5mA Max.
Output = 1.20 ±0.25 VDC in COOLANT, 3.75 ±0.25 VDC in AIR
Output SNK Current – 11 mA Max. (Vout = 1.20V)
Output Source Current – 0.5 mA Max. (Vout = 3.75V)
Output DC Resistance to Ground – 200k ohms



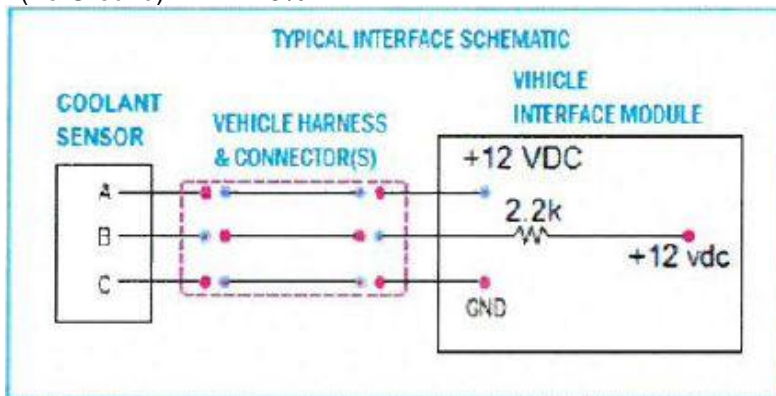
2. SENSOR P/N 1035100002

- **Thread size:** 1/4 – 18 NPTF, Standart Pipe Thread
- **Install torque:** 26 inch lbs Max.
- **Loctite Dryseal on the threads:** Yes
- **Tip terminals:** with Fluoropolymer Coating
- **Connector:** Mates with Packard electric connector 12110293
Pin A - Power, Pin B - Output and Pin C - Ground
- **Operating pressure:** 20 PSI Max.
- **Electrical Specifications:**
Power = 4.75 – 5.25 VDC 12.5mA Max.
Output = 1.20 ±0.25 VDC in COOLANT, 3.75 ±0.25 VDC in AIR
Output SNK Current – 11 mA Max. (Vout = 1.20V)
Output Source Current – 0.5 mA Max. (Vout = 3.75V)
Output DC Resistance to Ground – 200k ohms



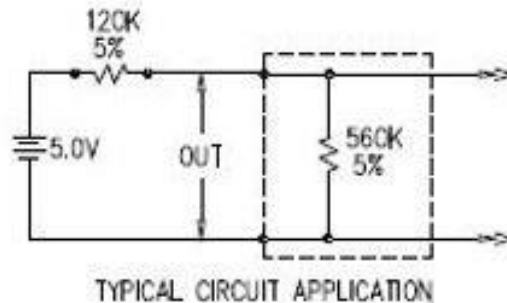
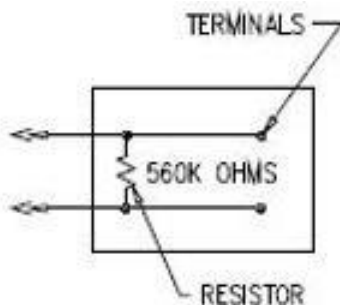
3. SENSOR P/N 103510007

- **Thread size:** 1/4 – 18 NPTF, Standart Pipe Thread
- **Install torque:** 26 inch lbs Max.
- **Loctite Dryseal on the threads:** Yes
- **Tip terminals:** with Fluoropolymer Coating
- **Connector:** Mates with Packard electric connector 12110293
Pin A - Power, Pin B - Output and Pin C - Ground
- **Operating pressure:** 20 PSI Max.
- **Electrical Specifications:**
Power = 9.0 – 16.0 VDC 20mA Max.
Output = 12 VDC in COOLANT, ≤ 0.3 VDC in AIR
(To Ground) = 2.4k ±5%



4. SENSOR P/N 700670

- **Thread size:** 1/4 – 18 NPTF, Standart Pipe Thread
- **Install torque:** 26 inch lbs Max.
- **Loctite Dryseal on the threads:** Yes
- **Connector:** Mates with Packard electric sealed connector P/N 15300027
- **Typical electrical performance with 30% to 70% Ethylene Glycol / water mixture**
 - a. Open harness 5.0V
 - b. Out of fluid: 4.19V < 4.89V
 - c. In fluid: 2.52V < 3.50V
 - d. Shorted harness: < 0.5V



X-ON Electronics

Largest Supplier of Electrical and Electronic Components

Click to view similar products for [Liquid Level Sensors](#) category:

Click to view products by [Amphenol](#) manufacturer:

Other Similar products are found below :

[FSH-21](#) [FSH-25](#) [FSH-34](#) [FSH-35](#) [FSV-31](#) [FSV-35](#) [RSF54H100R1/8](#) [LRNH31S41](#) [F03-16SFC-10M](#) [F03-16PE-5M](#) [F03-16PT-5M](#) [LBFS](#)
[1151](#) [SCN-1518SC](#) [LL103000](#) [LRNR31N01](#) [MS03-PP](#) [F03-16SF-10M](#) [KSL-100-1](#) [LS01-1A66-PP-2000W](#) [LS01-1B66-PP-500W](#) [LS02-](#)
[1B66-S-500W](#) [LS02-1B85-PP-5000W](#) [LS03-1A85-PP-500W](#) [LS03/DL-1A85-PA-500W](#) [EL-10N](#) [EL-3N](#) [LRNH31S42](#) [59630-1-T-02-F](#)
[LS04-1B66-2-500W](#) [LFFS 011](#) [PS-3S \(Q\)](#) [T0-SKF-0.5](#) [T0-SKF-10](#) [T0-SKF-5](#) [VNI3](#) [CLP2FA1BM24](#) [CLE2P](#) [VNI1](#) [LBFS 0111](#) [LFFS 014](#)
[KSL-88-PP](#) [KSL-99-1](#) [LS02-1A85-PP-500W](#) [LS02-1B85-PP-500W](#) [LS03-1A85-PA-500W](#) [MIC 1000-20](#) [700670](#) [BAF147B002-00A0](#) [DFT-](#)
[110](#) [DFT-220](#)