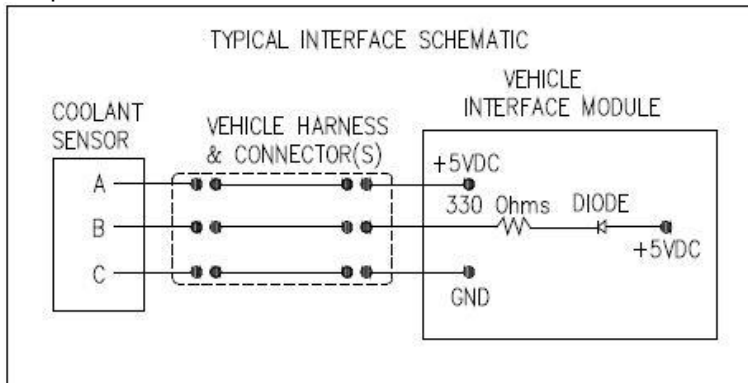


CASCO COOLANT SENSORS SPECIFICATIONS

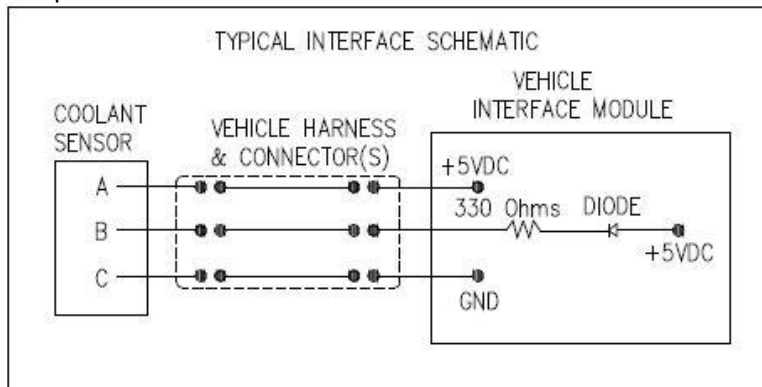
1. SENSOR P/N 1035100001

- **Thread size:** 1/4 – 18 NPTF, Standart Pipe Thread
- **Install torque:** 26 inch lbs Max.
- **Loctite Dryseal on the threads:** Yes
- **Connector:** Mates with Packard electric connector 12110293
Pin A - Power, Pin B - Output and Pin C - Ground
- **Operating pressure:** 20 PSI Max.
- **Electrical Specifications:**
Power = 4.75 – 5.25 VDC 12.5mA Max.
Output = 1.20 ±0.25 VDC in COOLANT, 3.75 ±0.25 VDC in AIR
Output SNK Current – 11 mA Max. (Vout = 1.20V)
Output Source Current – 0.5 mA Max. (Vout = 3.75V)
Output DC Resistance to Ground – 200k ohms



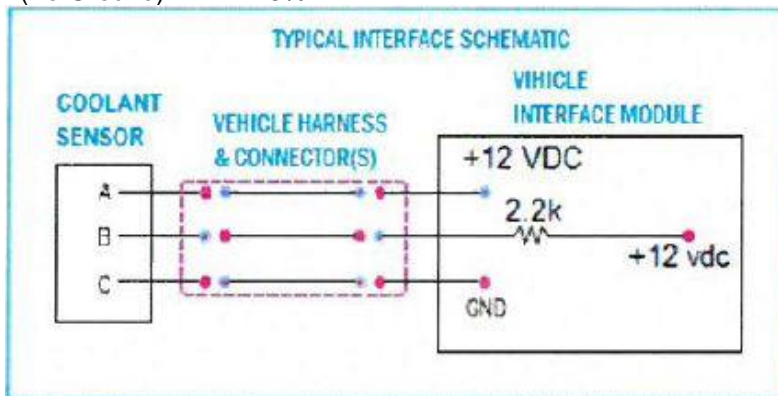
2. SENSOR P/N 1035100002

- **Thread size:** 1/4 – 18 NPTF, Standart Pipe Thread
- **Install torque:** 26 inch lbs Max.
- **Loctite Dryseal on the threads:** Yes
- **Tip terminals:** with Fluoropolymer Coating
- **Connector:** Mates with Packard electric connector 12110293
Pin A - Power, Pin B - Output and Pin C - Ground
- **Operating pressure:** 20 PSI Max.
- **Electrical Specifications:**
Power = 4.75 – 5.25 VDC 12.5mA Max.
Output = 1.20 ±0.25 VDC in COOLANT, 3.75 ±0.25 VDC in AIR
Output SNK Current – 11 mA Max. (Vout = 1.20V)
Output Source Current – 0.5 mA Max. (Vout = 3.75V)
Output DC Resistance to Ground – 200k ohms



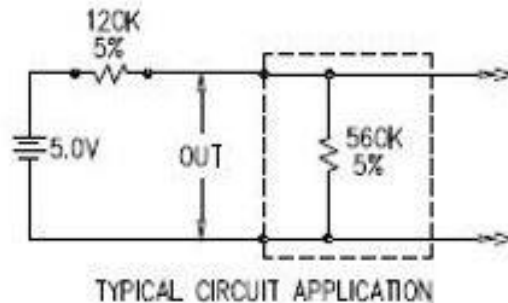
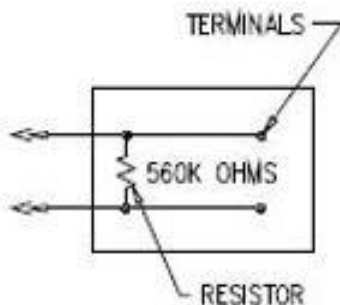
3. SENSOR P/N 103510007

- **Thread size:** 1/4 – 18 NPTF, Standart Pipe Thread
- **Install torque:** 26 inch lbs Max.
- **Loctite Dryseal on the threads:** Yes
- **Tip terminals:** with Fluoropolymer Coating
- **Connector:** Mates with Packard electric connector 12110293
Pin A - Power, Pin B - Output and Pin C - Ground
- **Operating pressure:** 20 PSI Max.
- **Electrical Specifications:**
Power = 9.0 – 16.0 VDC 20mA Max.
Output = 12 VDC in COOLANT, ≤ 0.3 VDC in AIR
(To Ground) = 2.4k ±5%



4. SENSOR P/N 700670

- **Thread size:** 1/4 – 18 NPTF, Standart Pipe Thread
- **Install torque:** 26 inch lbs Max.
- **Loctite Dryseal on the threads:** Yes
- **Connector:** Mates with Packard electric sealed connector P/N 15300027
- **Typical electrical performance with 30% to 70% Ethylene Glycol / water mixture**
 - a. Open harness 5.0V
 - b. Out of fluid: 4.19V < 4.89V
 - c. In fluid: 2.52V < 3.50V
 - d. Shorted harness: < 0.5V



X-ON Electronics

Largest Supplier of Electrical and Electronic Components

Click to view similar products for [Automotive Connectors](#) category:

Click to view products by [Amphenol](#) manufacturer:

Other Similar products are found below :

[003-018-000](#) [60403001](#) [60993906-B](#) [M902-2131](#) [M902-2161](#) [72.330.1035.1](#) [73.353.4028.0](#) [F119300-B](#) [F166900](#) [F258300-B](#) [F358300-B](#)
[F407400](#) [F444110](#) [F487000](#) [F509500B-B](#) [827153-1](#) [8N1515-32-24P](#) [9-1326729-8](#) [925474-1](#) [928905-1](#) [964562-4](#) [968782-1](#) [GT17SA-8DS-](#)
[HU](#) [98891-1012](#) [98947-1016](#) [12004475-L](#) [12010290](#) [12010309-B](#) [12015454](#) [12020219-B](#) [12020308](#) [12041318-B](#) [12052225-L](#) [12052466](#)
[12059125](#) [12064869](#) [12004327-B](#) [12010503-B](#) [12015308](#) [12015384](#) [12015909](#) [1-21030-1](#) [12041254](#) [12041318](#) [12047946-B](#) [12047957](#)
[12047957-L](#) [12059473](#) [12066261](#) [12110546](#)