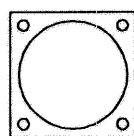
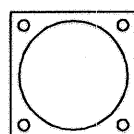


ACCESSORIES

(NOT PART OF STANDARD ASSEMBLY)

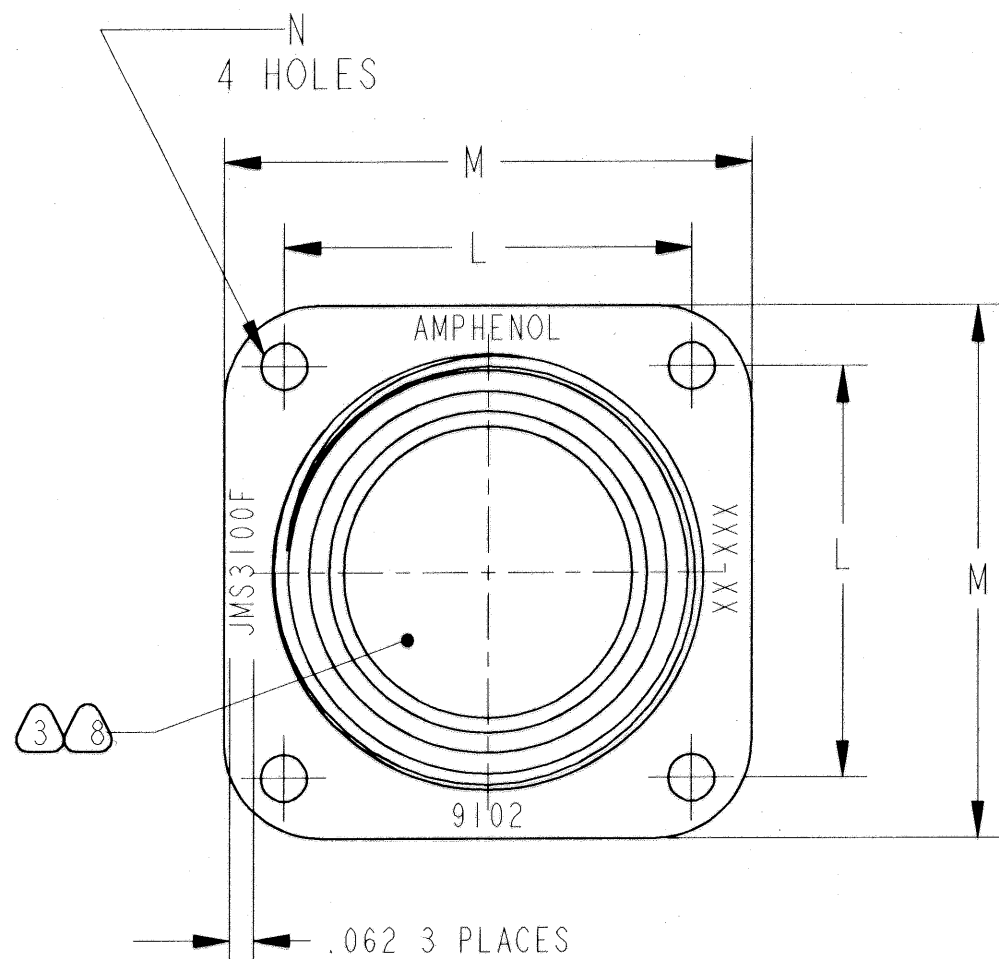


FLANGE GASKET,
PLAIN
10-40450-(SHELL SIZE)



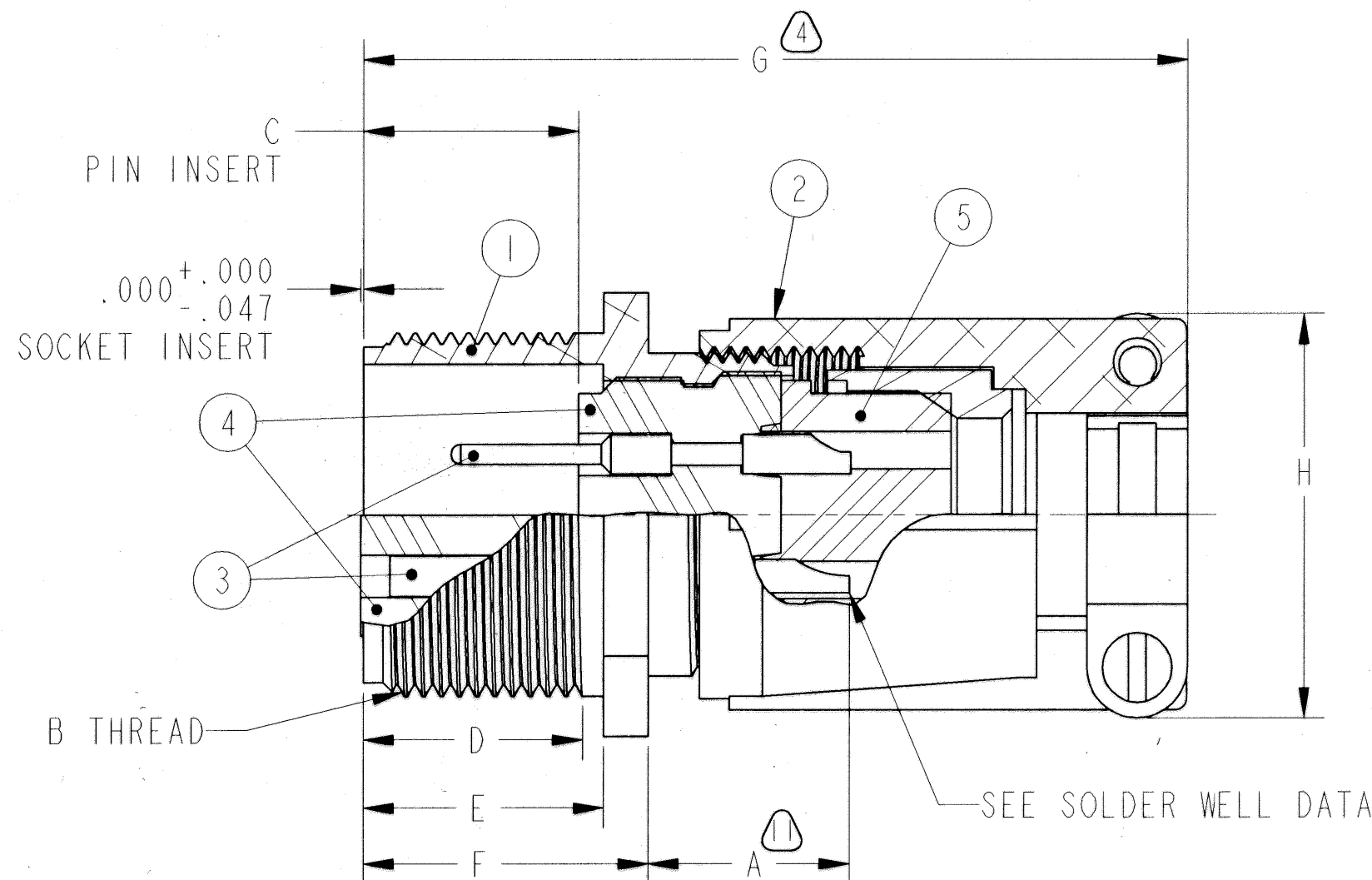
FLANGE GASKET,
SHIELDING
10-40450-(SHELL SIZE)

| 51536-58 | | REVISIONS | |
|----------|---|-----------|----------|
| LTR | DESCRIPTION | DATE | APPVD |
| C | (CL 11) SEE OBSOLETE RECORD DRAWING. REDESIGNED AND REDRAWN SAME SIZE SEE ECN: 83983 | 1-1-98 | GJO |
| D | (CL 11) SEE ECN 91394 | 01/02 | J. Basem |



5 BLACK INK STAMP "AMPHENOL",
DATE CODE(9-3895) AND MS NUMBER
PER 9-2811
EXAMPLE:
AMPHENOL 9102 JMS3100F20-12P

| CONTACT DATA (WHERE APPLICABLE) | |
|---|----------------|
| THERMOCOUPLE | |
| MATERIAL | IDENTIFICATION |
| CHROMEL | WHITE |
| ALUMEL | GREEN |
| IRON | BLACK |
| CONSTANTAN | YELLOW |
| INSERT ARRANGEMENTS CONTAINING THERMOCOUPLE CONTACTS MUST HAVE SUCH CONTACTS ASSEMBLED INTO THE INSERT IN PROPER LOCATIONS AS SPECIFIED BY APPLICABLE DRAWINGS MS33683-13 OR MS33684-15 | |



| | SOLDER WELL DATA | | | | | THERMOCOUPLE | |
|--------------|--|--|--|--|--|--|--|
| CONTACT SIZE | 0 | 4 | 8 | 12 | 16 | 12 | 16 |
| WELL DIA | .469 ^{+.005} _{-.003} | .332 ^{+.005} _{-.003} | .209 ^{+.004} _{-.002} | .116 ^{+.004} _{-.002} | .078 ^{+.004} _{-.002} | .125 ^{+.004} _{-.002} | .094 ^{+.004} _{-.002} |
| WELL DEPTH | .031 ⁺ _{-.000} | .625 | .500 | .375 | .250 | .250 | .188 |

| POS | QTY | PART NUMBER | DESCRIPTION | NOTE |
|-----|-----|-------------|---------------|------|
| 5 | 1 | SEE COLUMN | GROMMET | |
| 4 | 1 | SEE COLUMN | INSERT | |
| 3 | | SEE NOTE 12 | CONTACTS | |
| 2 | 1 | SEE COLUMN | BACKSHELL KIT | |
| 1 | 1 | SEE COLUMN | SHELL | |

| UNLESS OTHERWISE SPECIFIED | SPECIFICATIONS | PARTS LIST | | | |
|---|---------------------------------|--|----------|---|--------------------------|
| LINEAR DIMENSIONS ARE IN INCHES TOLERANCES: .XXXX = ±.0005 .XXX = ±.010 .XX = ±.03 .X = ±.1 ANGLES = ±2° OTHER STANDARDS PER 9-3800 AND DOD-D-1000 THIRD ANGLE PROJECTION | MATERIAL SPEC. N/A | APPROVALS | DATE | AMPHENOL CORPORATION <small>SIDNEY, N.Y. 13838-1395</small> CONNECTOR, ELECTRICAL RECEPTACLE, TYPE MS3100F | |
| | PROCESS SPEC. TEST: 9-3106-1 | PREPARED WHITNEY | 11-4-69 | | |
| | ASSY: 9-3238-1 | CHECKED MENDEOLA | 11-18-69 | | |
| | | MATERIAL | | | |
| | | APPROVED R. W. TYLER | 11-6-69 | | |
| | | APPROVED W. M. HARRISON | 11-19-69 | | |
| | | PROJ/ENG INFORMATION 10_474008_050.ASSEM 10_474008_050 | | SIZE C | FSCM NO. 77820 |
| | | SCALE: NONE REF: 10-329800/19 | | DOCUMENT NO. 10-474008 THRU 10-474050 | REV. D |

SEE SHEET 2.

NOTES:

THE USE OF THIS DOCUMENT IS UNLIMITED. HOWEVER, DOCUMENTS REFERENCED HEREON MAY CONTAIN LIMITED RIGHTS DATA.

| | | |
|-------------------|------------------|---------------|
| COMPANY ID: 4 | CODED/MS/CUST: Y | N/A |
| INTERNAL: N | LOT NO: N | |
| DATE CODE: 9-3895 | SEE DRAW: N | N/A |
| STAMPING DATA | | NEXT ASSEMBLY |

FAMCODES DATA3:ANS MNS CICS:

10-474008/050

DOC NO

SH

1 OF 2

A

TAB.

| ASSEMBLY NUMBER | MS NUMBER | 15 INSERT | 15 GROMMET | SHELL | BACKSHELL KIT | A +.050 -.060 | B THREAD CLASS 2A (PLATED) | C ±.031 | D MIN FULL THREAD | E +.010 -.000 | F +.020 -.010 | G MAX | H MAX | L ±.005 | M | N DIA +.004 -.002 |
|-----------------|----------------|------------------------|---------------|-------------|---------------|---------------------|-------------------------------|------------|----------------------|---------------------|---------------------|----------|----------|------------|-------|----------------------------|
| 10-474008-() | 3100F- 8S -() | NOT AVAILABLE | | | | | | | | | | | | | | |
| 10-474010-() | 3100F-10S -() | NOT AVAILABLE | | | | | | | | | | | | | | |
| 10-474011-() | 3100F-10SL-() | 10-74811-() | 10-60711-() | 10-37260-11 | 10-584182-113 | .422 | .6250-24 UNEF | .484 | .391 | .562 | .672 | 2.192 | .896 | .719 | 1.000 | .120 |
| 10-474012-() | 3100F-12S -() | 10-74812-() | 10-60712-() | 10-37260-12 | 10-584182-113 | .422 | .7500-20 UNEF | .484 | .450 | .562 | .672 | 2.192 | .896 | .812 | 1.094 | .120 |
| 10-474013-() | 3100F- 12 -() | 10-74813-() | 10-60713-() | 10-37260-13 | 10-584182-113 | .672 | .7500-20 UNEF | .672 | .625 | .750 | .860 | 2.536 | .896 | .812 | 1.094 | .120 |
| 10-474014-() | 3100F-14S -() | 10-74814-() | 10-60714-() | 10-37260-14 | 10-584185-143 | .422 | .8750-20 UNEF | .484 | .450 | .562 | .672 | 2.192 | 1.021 | .906 | 1.188 | .120 |
| 10-474015-() | 3100F- 14 -() | 10-74815-() | 10-60715-() | 10-37260-15 | 10-584185-143 | .672 | .8750-20 UNEF | .672 | .625 | .750 | .860 | 2.536 | 1.021 | .906 | 1.188 | .120 |
| 10-474016-() | 3100F-16S -() | 10-74816-() | 10-60716-() | 10-37260-16 | 10-584187-163 | .422 | 1.0000-20 UNEF | .484 | .450 | .562 | .672 | 2.192 | 1.151 | .969 | 1.281 | .120 |
| 10-474017-() | 3100F- 16 -() | 10-74817-() | 10-60717-() | 10-37260-17 | 10-584188-173 | .672 | 1.0000-20 UNEF | .672 | .625 | .750 | .860 | 2.536 | 1.151 | .969 | 1.281 | .120 |
| 10-474018-() | 3100F- 18 -() | 10-74818-() | 10-60718-() | 10-37260-18 | 10-584189-183 | .641 | 1.1250-18 UNEF | .672 | .625 | .750 | .891 | 2.661 | 1.242 | 1.062 | 1.375 | .120 |
| 10-474020-() | 3100F- 20 -() | 10-74820-() | 10-60720-() | 10-37260-20 | 10-584190-203 | .641 | 1.2500-18 UNEF | .672 | .625 | .750 | .891 | 2.661 | 1.499 | 1.156 | 1.500 | .120 |
| 10-474022-() | 3100F- 22 -() | 10-74822-() | 10-60722-() | 10-37260-22 | 10-584191-223 | .641 | 1.3750-18 UNEF | .672 | .625 | .750 | .891 | 2.661 | 1.499 | 1.250 | 1.625 | .120 |
| 10-474024-() | 3100F- 24 -() | 10-74824-() | 10-60724-() | 10-37260-24 | 10-584192-243 | .578 | 1.5000-18 UNEF | .672 | .625 | .812 | .953 | 2.739 | 1.781 | 1.375 | 1.750 | .147 |
| 10-474028-() | 3100F- 28 -() | 10-74828-() | 10-60728-() | 10-37260-28 | 10-584193-283 | .578 | 1.7500-18 UNS | .672 | .625 | .812 | .953 | 2.739 | 1.781 | 1.562 | 2.000 | .147 |
| 10-474032-() | 3100F- 32 -() | 10-74832-() | 10-60732-() | 10-37260-32 | 10-584194-323 | .500 | 2.0000-18 UNS | .672 | .625 | .875 | 1.031 | 3.128 | 2.087 | 1.750 | 2.250 | .173 |
| 10-474036-() | 3100F- 36 -() | 10-74836-() | 10-60736-() | 10-37260-36 | 10-584195-363 | .500 | 2.2500-16 UN | .672 | .625 | .875 | 1.031 | 3.128 | 2.281 | 1.938 | 2.500 | .173 |
| 10-474040-() | 3100F- 40 -() | SEE INDIVIDUAL DRAWING | | | | | | | | | | | | | | |
| 10-474041/50 | | NOT AVAILABLE | | | | | | | | | | | | | | |

6

- NOTES:**
- SHIP CONNECTOR WITH SEALING PLUGS UNASSEMBLED.
 - PACKAGE PER PRODUCTION PROCESS SHEET.
 - FOR CONTACT SIZE, SPACING AND SERVICE RATING, SEE DRAWINGS, MIL-STD-1651.
 - DIMENSION INDICATES FINAL INSTALLATION. FOR STORAGE AND SHIPPING, NUT AND SLEEVE MUST BE LOOSELY COUPLED.
 - SEE WORK ORDER FOR PERMISSIBLE ADDITIONAL OR ALTERNATE STAMPING.
 - TO COMPLETE ASSEMBLY NUMBER AND MS NUMBER, ADD APPLICABLE INSERT ARRANGEMENT SUFFIX TO BASE NUMBERS LISTED ABOVE. (FOR ALTERNATE ARRANGEMENTS, REFER TO 9-2437).
 - SEE DRAWING 10-474608/650 AND OTHERS FOR REQUIRED MATING PLUG ASSEMBLIES.
 - ALL LOCKWIRE HOLES ARE .045 DIAMETER MINIMUM
 - INSERTS AND CONTACTS ARE NOT REMOVABLE.
 - UNITS ILLUSTRATED MEET THE MATERIAL AND FINISH REQUIREMENTS OF MIL-C-5015.
 - INCREASE "A" DIMENSION BY .312 FOR SIZE "0" CONTACT ONLY.
 - SEE SEPARATE PARTS LIST FOR COMPONENT PART NUMBERS AND QUANTITIES.
 - ALL UNUSED GROMMET HOLES MUST BE FILLED WITH APPROPRIATE SIZE SEALING PLUGS.
 - INDICATED THERMOCOUPLE CONTACT DATA IS APPLICABLE ONLY TO 10-474017-13P/S, 10-474018-15P/S (AND THEIR ALTERNATE ARRANGEMENTS) WHICH ARE THE ONLY THERMOCOUPLE ARRANGEMENTS AVAILABLE IN THIS SERIES.
 - SOME INSERTS AND GROMMETS ARE TOOLED UNDER A +50 PART NUMBER. CONSULT PARTS LIST FOR VERIFICATION.

THE USE OF THIS DOCUMENT IS UNLIMITED. HOWEVER, DOCUMENTS REFERENCED HEREON MAY CONTAIN LIMITED RIGHTS DATA.

| | | | |
|------------------|--------------------------|---|------------------|
| SIZE C | FSCM NO. 77820 | DOCUMENT NO. 10-474008 THRU 10-474050 | REV. D |
| SCALE: NONE | | REF: 10-329800/19 | SHEET 2 OF 2 |

X-ON Electronics

Largest Supplier of Electrical and Electronic Components

Click to view similar products for [Circular MIL Spec Connector](#) category:

Click to view products by [Amphenol](#) manufacturer:

Other Similar products are found below :

[89075GULPR](#) [0025-262-542](#) [0025-263-3014](#) [0025-264-3014](#) [0031-065-002](#) [0031-071-002](#) [58-584653-12P](#) [0134-201-1007](#) [0134-202-0800](#)
[0134-202-1200](#) [0134-202-2407](#) [0134-207-1206](#) [0134-207-1800](#) [0134-207-2207](#) [0134-213-0806](#) [0134-213-1007](#) [0134-213-1009](#) [0134-213-1200](#) [0134-213-1208](#) [0134-213-1800](#) [0134-213-2209](#) [0025-258-000](#) [0025-259-542](#) [0031-066-002](#) [0031-068-002](#) [0031-069-002](#) [0031-070-002](#) [0031-072-002](#) [015-9516-002](#) [020313-0043](#) [020340-0009](#) [020418-0036](#) [020419-0080](#) [020419-0120](#) [020420-0108](#) [0104-201-2402](#) [0114-201-1278](#) [024251-0015](#) [602GB06EG1832SN](#) [602GB06EG24-61SN](#) [0134-201-1207](#) [0134-201-1410](#) [0134-201-1806](#) [0134-201-2006](#) [0134-201-2007](#) [0134-201-2010](#) [0134-201-2200](#) [0134-202-1400](#) [0134-207-0809](#) [0134-207-1208](#)