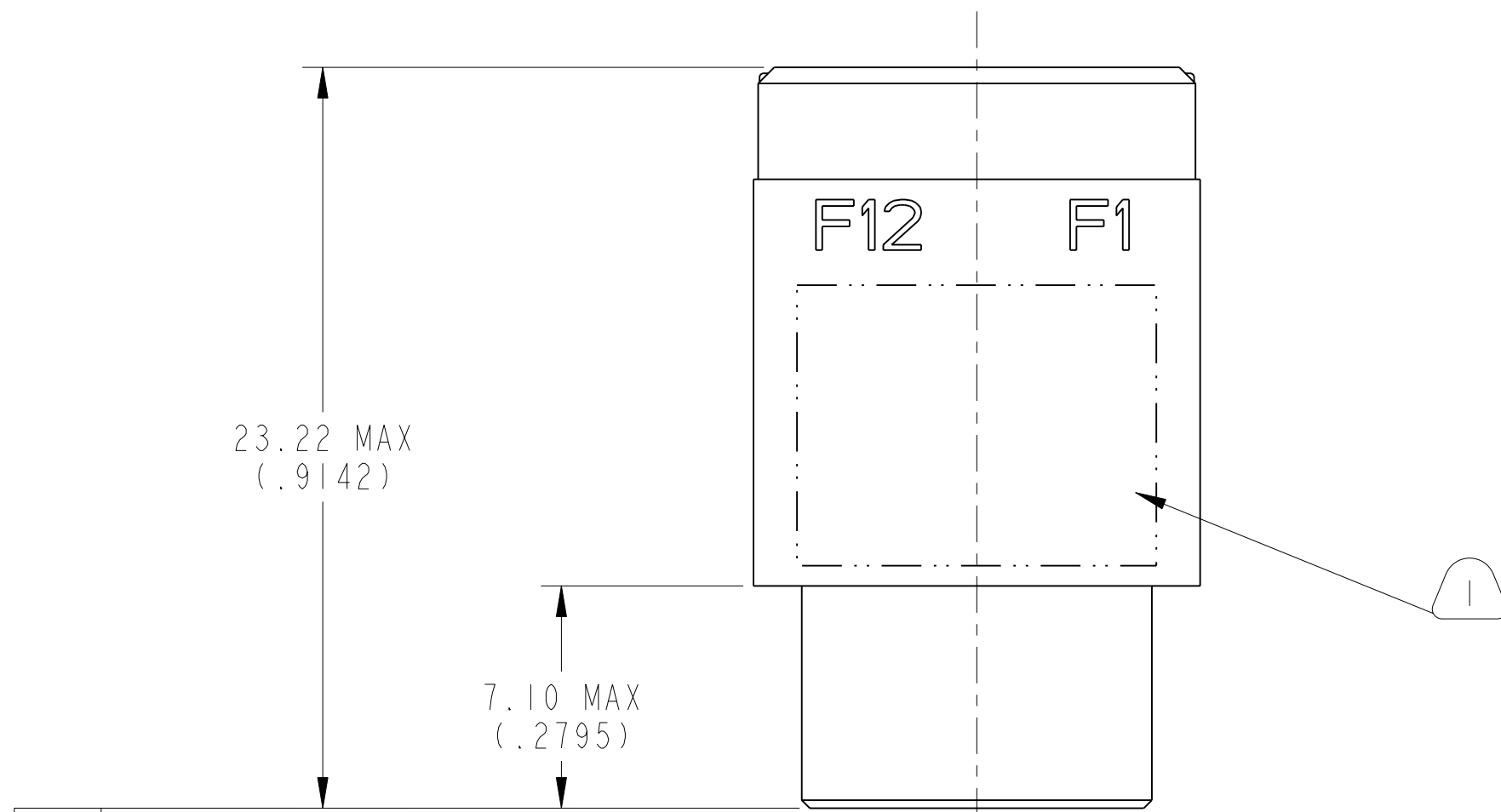


| | | |
|-------------|--------------------|----------------------------|
| REV. A | SHEET 1 OF 3 | DOCUMENT NO. 10-504637-009 |
| M REVISIONS | | |
| LTR | DESCRIPTION | DATE |
| A | PRODUCTION RELEASE | 6/18/18 |

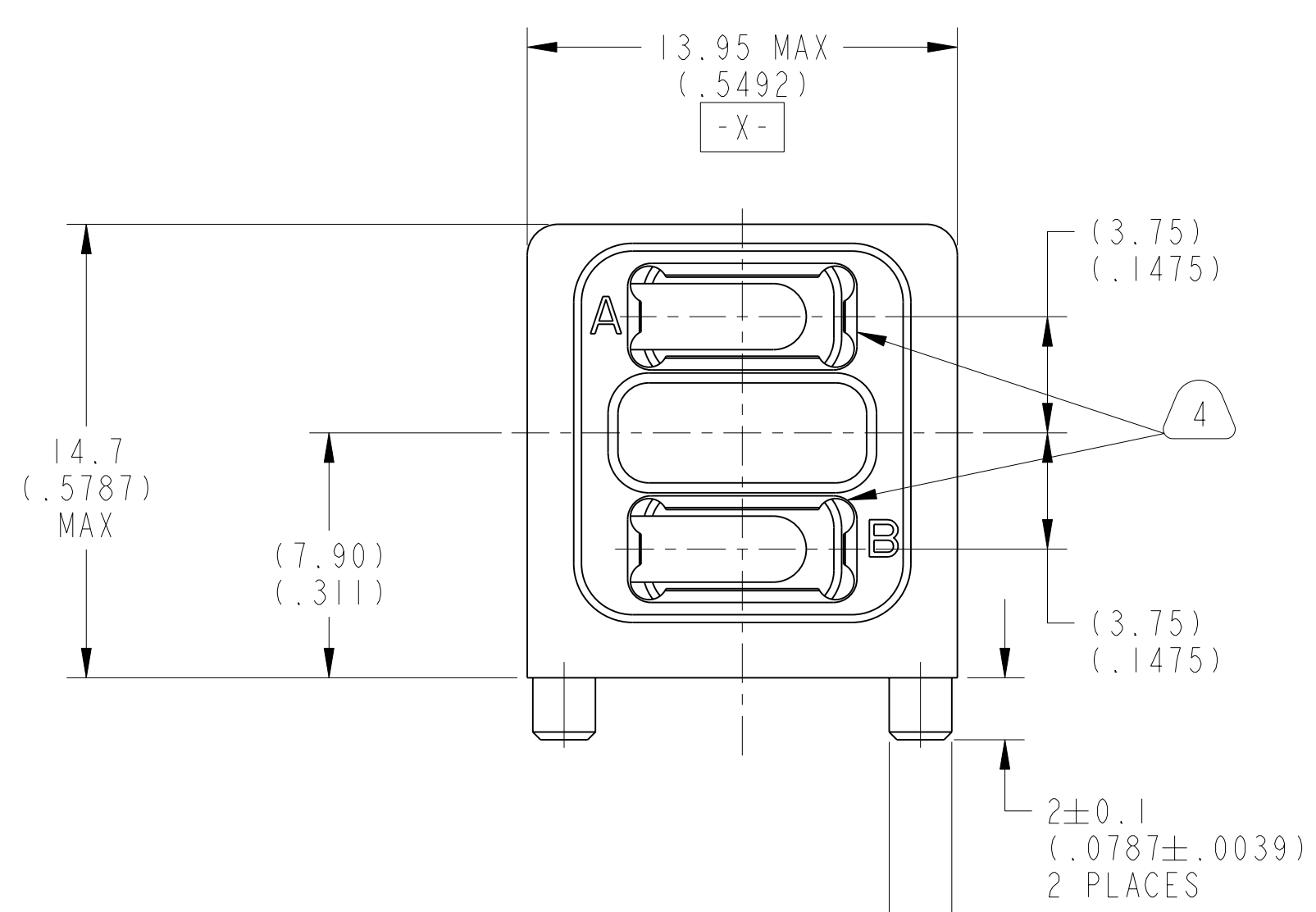
DOCUMENT NO. 10-504637-009

SHEET 1 OF 3

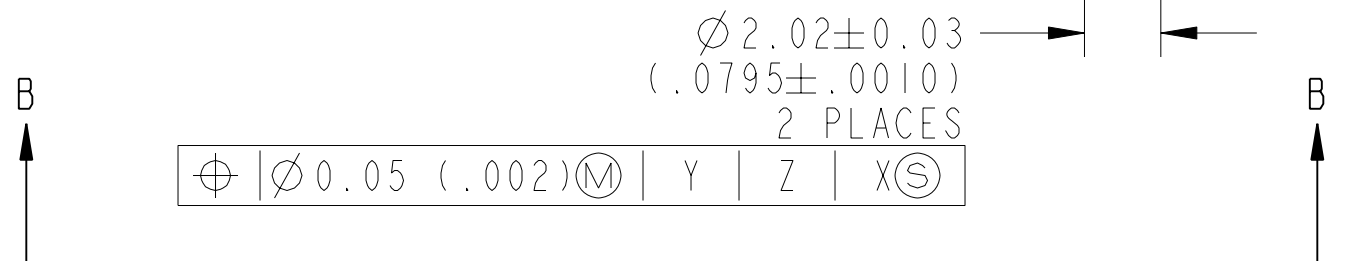
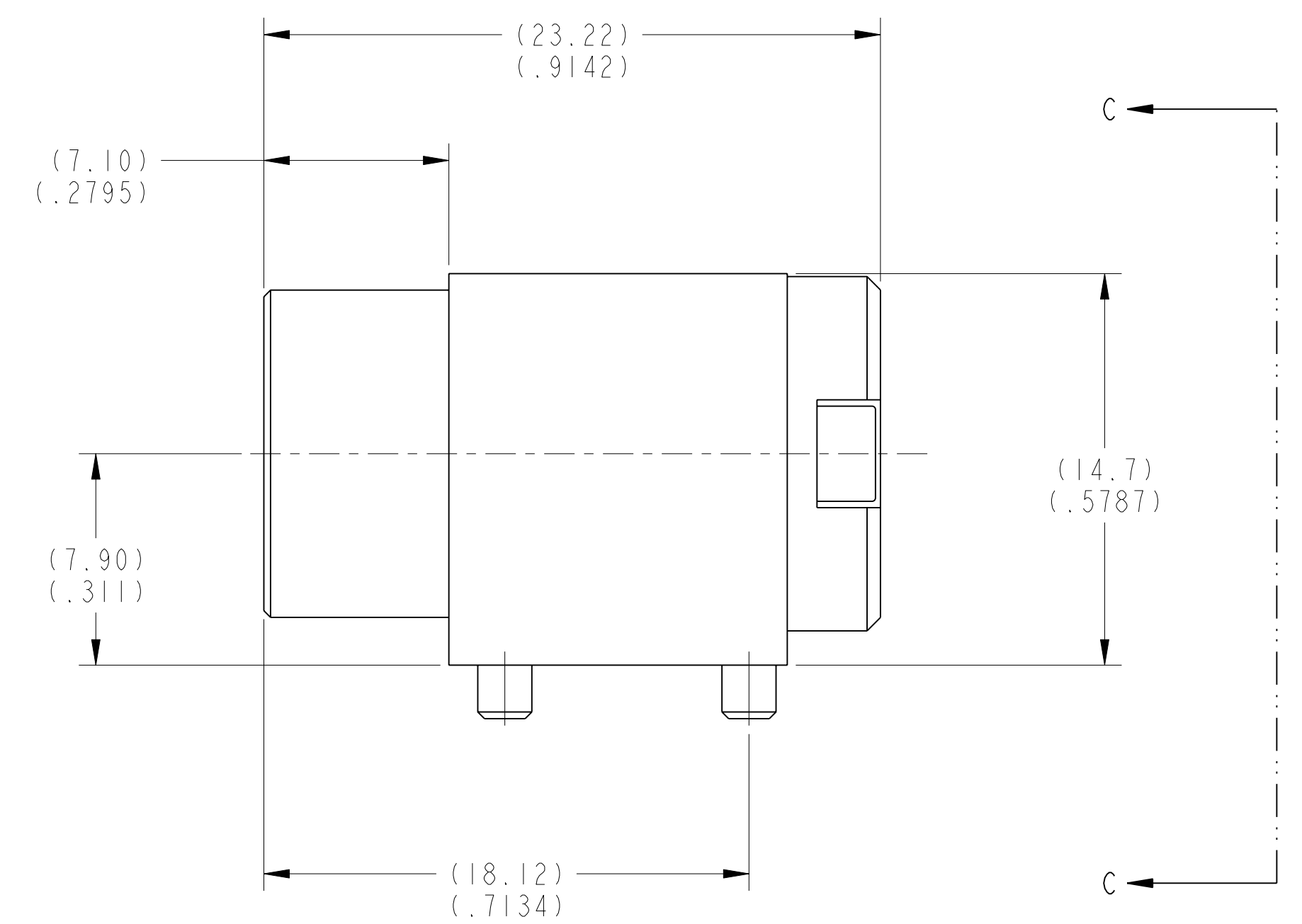
REV. A



-Y-



-X-



SEE SHEET 2

NOTES:
 THE USE OF THIS DOCUMENT IS UNLIMITED. HOWEVER, DOCUMENTS REFERENCED HEREON MAY CONTAIN LIMITED RIGHTS DATA.

SCALE 5.000

| | |
|------|--------------------------|
| NONE | PRO/ENGINEER INFORMATION |
| | Pro/e Model Used: |
| | 10-504637-009.DWG.ASSEM |
| | Drawing Name: |
| | 10-504637-009 |

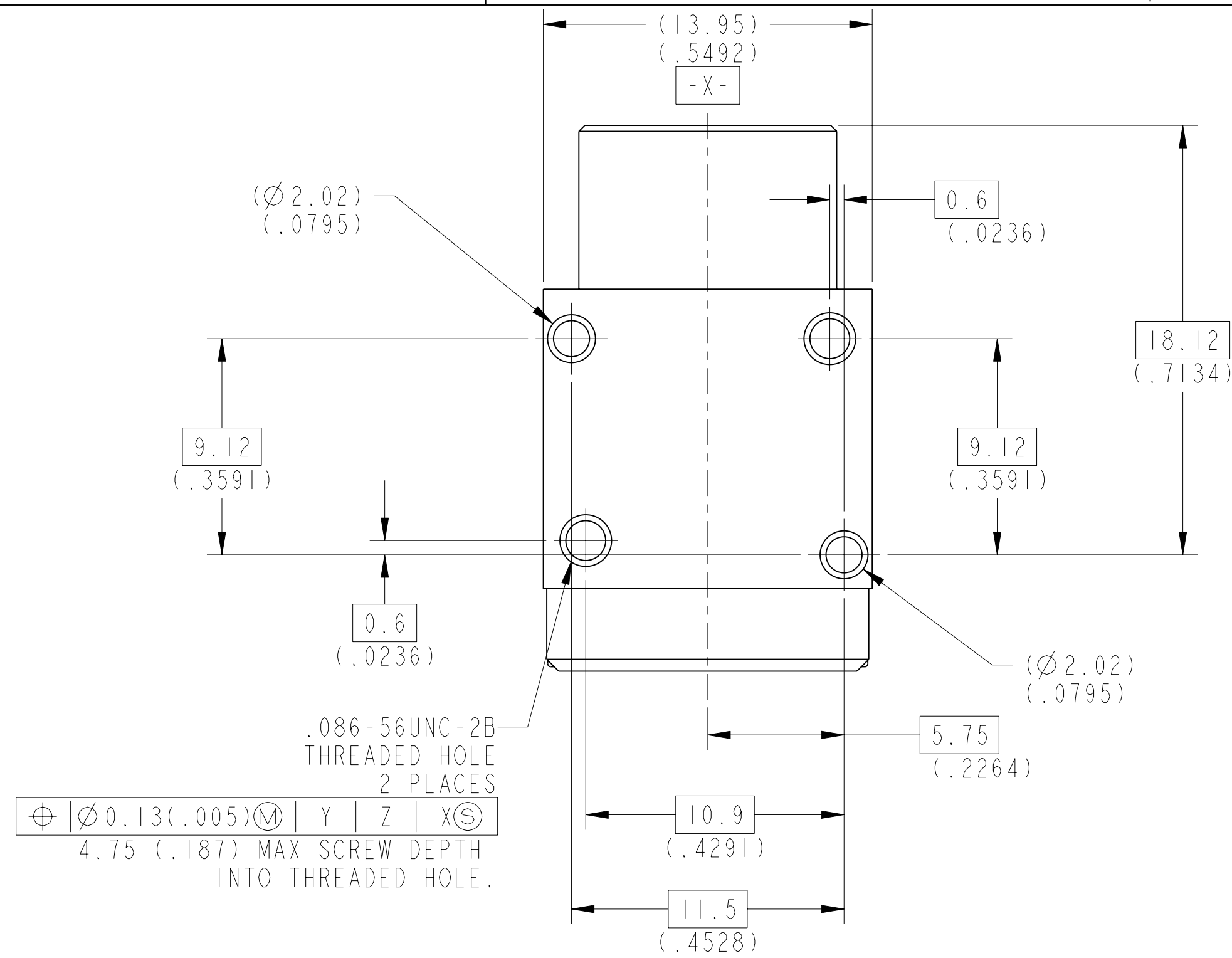
UNLESS OTHERWISE SPECIFIED
 LINEAR DIMENSIONS ARE IN MILLIMETERS
 TOLERANCES:
 .XXXX = ±.NA ANGLES= ±2°
 .XXX = ±NA
 .XX = ±.13
 .X = ±.25
 DIM. & TOL. PER ASME Y14.5M;
 DRM PER MIL-DTL-31000;
 OTHER Amphenol Sids. PER 9-3800
 LEGENDS:
 =FLAG NOTE CALL OUT REFERENCE ONLY

| SPECIFICATIONS | POS | QTY | PART NUMBER | DESCRIPTION | NOTE |
|----------------|-----|-----|-------------|-------------|------|
| MATERIAL SPEC. | | | | | |
| NONE | | | | | |
| PROCESS SPEC. | | | | | |
| 9-3856-5 | | | | | |
| 9-3895 | | | | | |

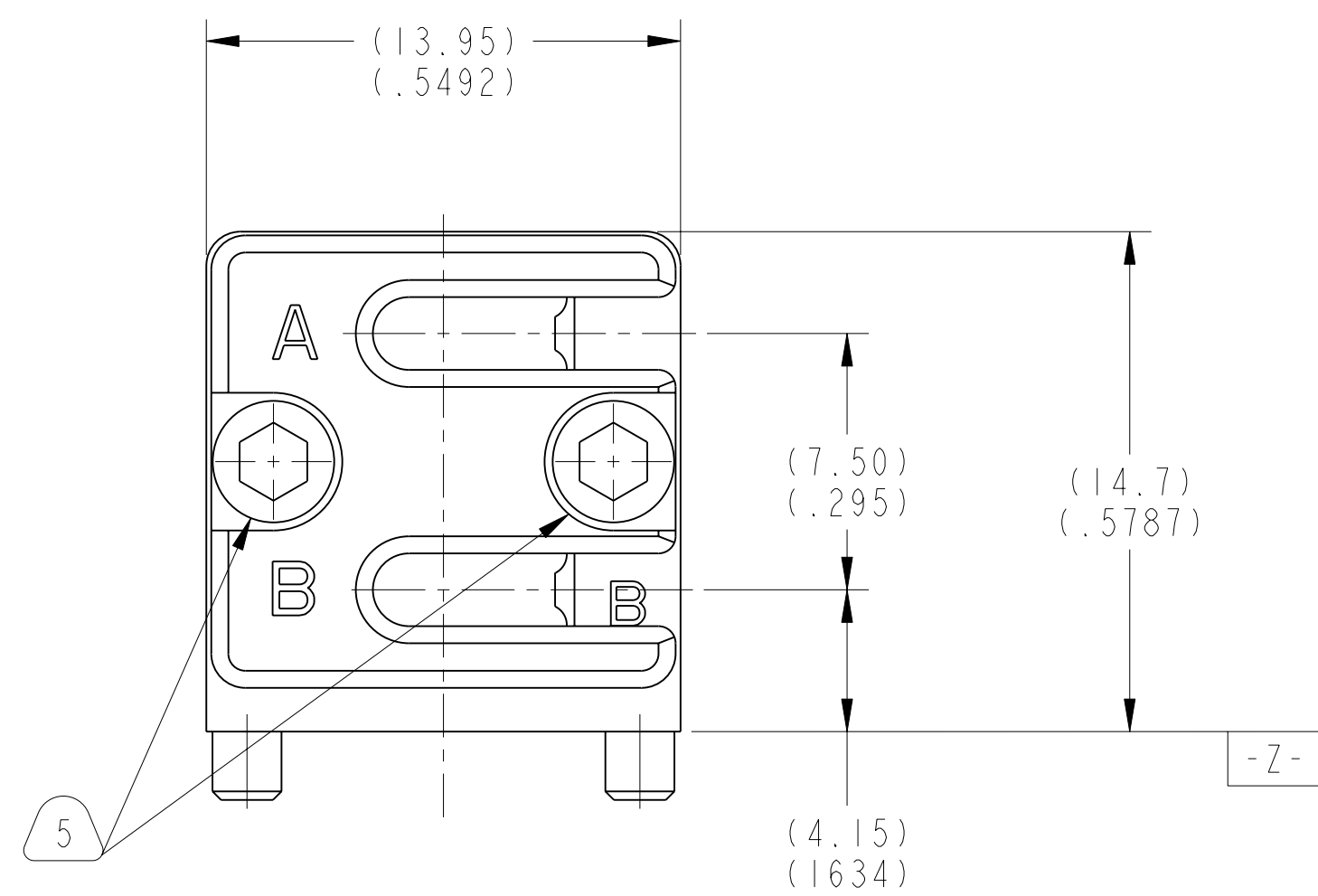
| APPROVALS | | DATE | PARTS LIST | | | |
|------------------------|--------------|-----------|---|--------------------|---------------|------|
| PREPARED BY | R. CHAPMAN | 22-Jun-17 | AMPHENOL CORPORATION 40-60 DELAWARE AVENUE SIDNEY, N.Y. 13838 | | | |
| ENGINEER IN CHARGE | E. HICKEY | | | | | |
| DESIGN MANAGER | R. SELFRIDGE | | CONNECTOR, FIBER OPTIC, MODULE, 2 MT SPECIAL (VITA 66.4 ENVELOPE) | | | |
| DESIGN ACTIVITY GROUP | BLP | | | | | |
| THIRD ANGLE PROJECTION | | | SIZE | CAGE CODE | DOCUMENT NO. | REV. |
| | | | C | 77820 | 10-504637-009 | A |
| | | | SCALE: 3.0 | REF: 10-504637-008 | SHEET 1 OF 3 | |

FORMAT: C-U-L-REV..B

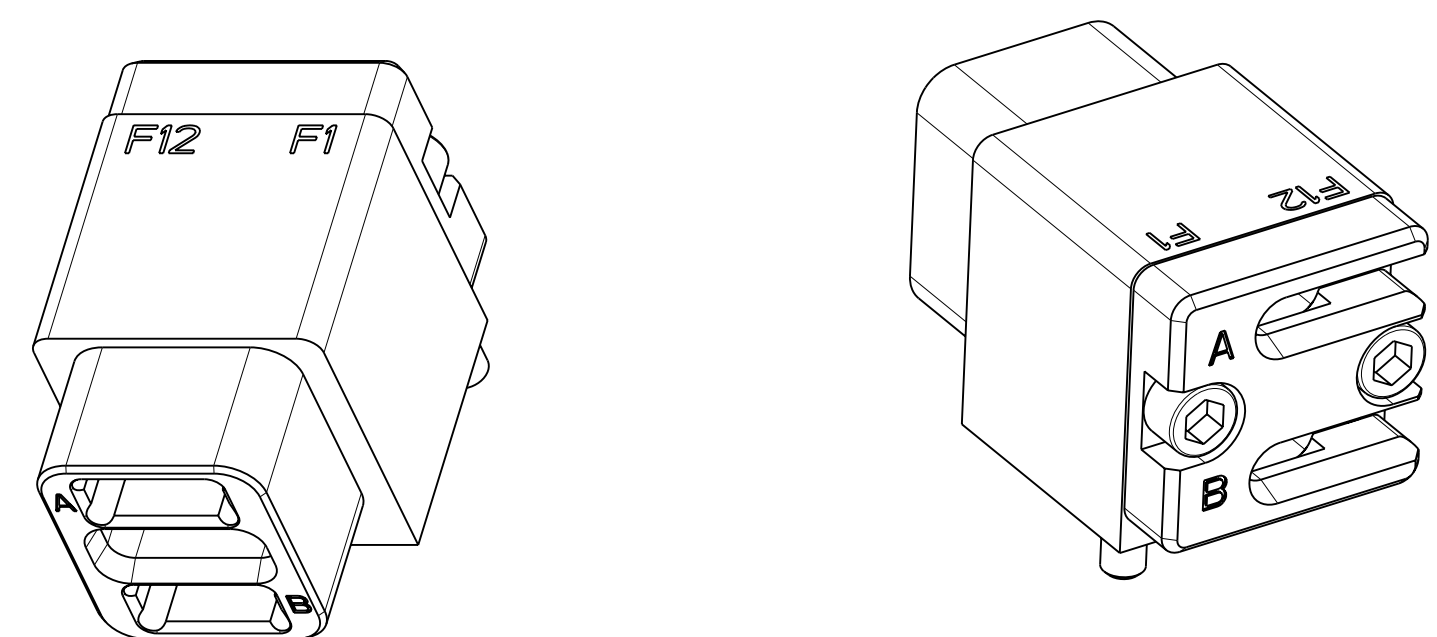
DOCUMENT NO. 10-504637-009
 SHEET 2 OF 3
 REV. A
 C
 B
 A
 FORMAT: C-U-L-E-REV-B



VIEW AT B



VIEW AT C



5. RETAINER SCREWS TO BE TIGHTENED TO A TORQUE OF 2 -3 IN-LBS. RETAINER SHOULD BE BOTTOMED ON CONNECTOR BODY.
4. INSERT CAVITIES ARE FOR A FIBER OPTIC MT FERRULE PER IEC 61754-5 MT FERRULES, PIN CLAMP ASSEMBLIES, SPRINGS, AND ASSOCIATED RIBBON CABLE ARE NOT PART OF THIS ASSEMBLY.
3. FOR CONNECTOR INSTALLATION ILLUSTRATION SEE SHEET 3.
2. FOR MATING BACKPLANE CONNECTOR ASSEMBLY, SEE DRAWING 10-504639-007.
1. BLACK INK STAMP "APH" 77820 PART NUMBER AND DATE CODE ON INDICATED SURFACE PER 9-3856-5. DATE CODE PER 9-3895. CHARACTERS TO BE 1.6±.51 (.062±.005 INCH). HIGH. ADDITIONAL INFORMATION MAY BE REQUESTED BY PURCHASE ORDER. STAMP ING CAN BE ON BOTH SIDES OF PART.

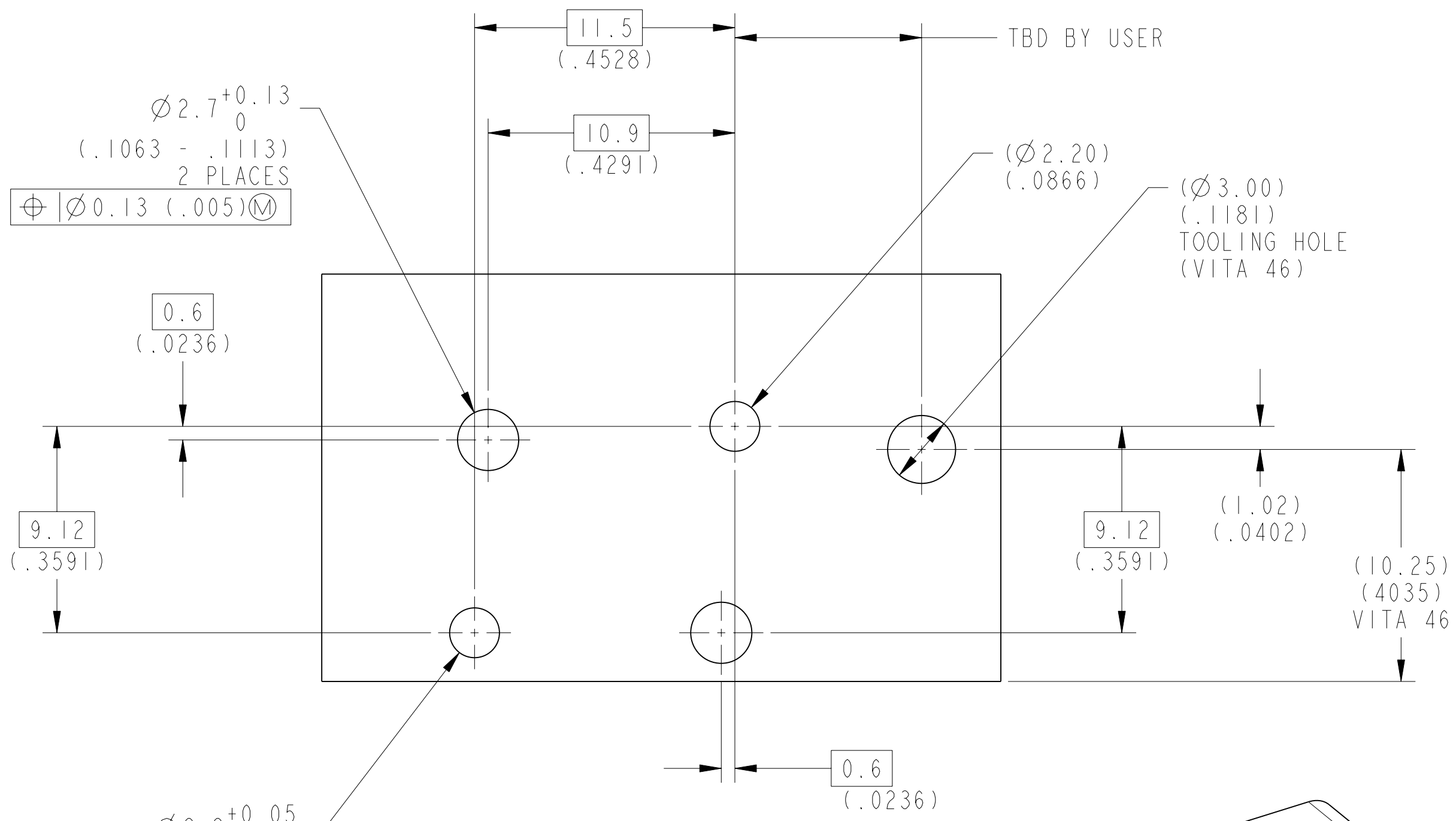
MATERIALS AND FINISHES

| COMPONENT | MATERIAL/ FINISH |
|-------------|---|
| MAIN BODY | BODY - MATERIAL - ALUM. ALLOY PER AMS 4150 FINISH - CHROMATE TREATMENT PER MIL-C-5541, CL 3 HELICAL INSERTS - STAINLESS STEEL 304 SERIES PASSIVATED |
| MT RETAINER | BODY - MATERIAL - ALUM. ALLOY PER AMS 4150 FINISH - CHROMATE TREATMENT PER MIL-C-5541, CL 3 SCREW - STAINLESS STEEL 300 SERIES PASSIVATED |

THE USE OF THIS DOCUMENT IS UNLIMITED. HOWEVER, DOCUMENTS REFERENCED HEREON MAY CONTAIN LIMITED RIGHTS DATA.

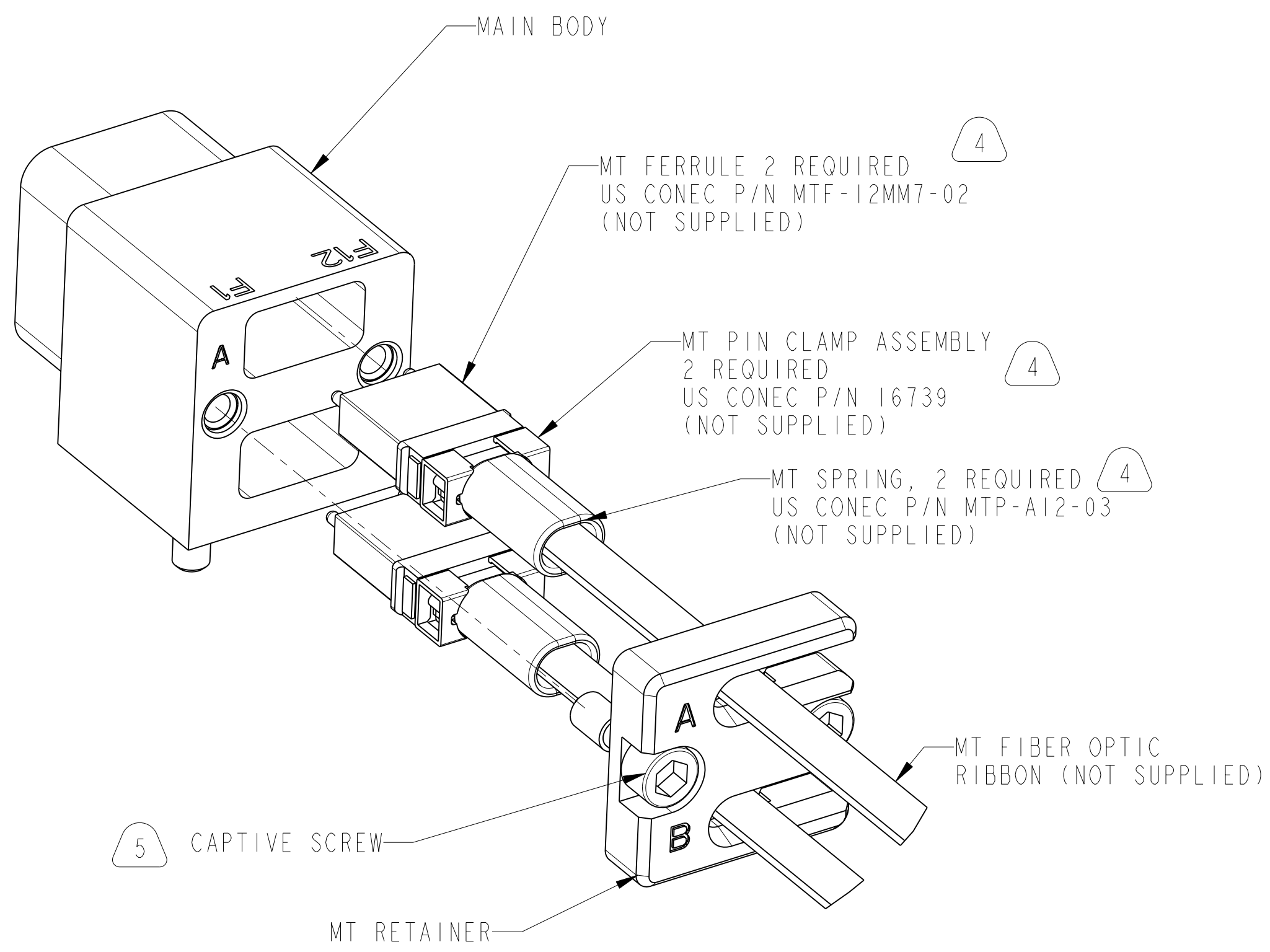
| | | | |
|------------------|---------------------------|--------------------------------------|------------------|
| SIZE C | CAGE CODE 77820 | DOCUMENT NO. 10-504637-009 | REV. A |
| SCALE: 3.0 | REF. 10-504637-008 | SHEET 2 OF 3 | |

DOCUMENT NO. 10-504637-009
 SHEET 2 OF 3
 REV. A



**SUGGESTED MODULE PCB
INTERFACE DIMENSIONS**

SCALE 5.000



**REAR EXPLODED
ASSEMBLY VIEW**

SCALE 4.000

THE USE OF THIS DOCUMENT IS UNLIMITED. HOWEVER, DOCUMENTS REFERENCED HEREON MAY CONTAIN LIMITED RIGHTS DATA.

| | | | |
|------------|--------------------|----------------------------|--------|
| SIZE C | CAGE CODE 77820 | DOCUMENT NO. 10-504637-009 | REV. A |
| SCALE: 3.0 | REF. 10-504637-008 | SHEET 3 OF 3 | |

DOCUMENT NO. 10-504637-009 SHEET 3 OF 3 REV. A

X-ON Electronics

Largest Supplier of Electrical and Electronic Components

Click to view similar products for [Fibre Optic Connectors](#) category:

Click to view products by [Amphenol](#) manufacturer:

Other Similar products are found below :

[0004700001](#) [6100-R](#) [6313](#) [F709722200](#) [F709730000](#) [F718183204](#) [F727403500](#) [F727752800](#) [8119](#) [9440F20-27S-190](#) [944-120-6001](#)
[9441F10SL-3S](#) [9444W28-21S](#) [9444W36-10S](#) [9446W20-16S](#) [953-101-5310-P](#) [954-101-57202B](#) [A0270169](#) [12-9122](#) [12-5702](#) [AX101713](#)
[AX102420](#) [AX103923](#) [AX104024](#) [AX104193](#) [AX104230](#) [AX104562](#) [AX105203-B25](#) [AX105205-S1](#) [EHSC2M](#) [17-300800](#) [181-011-126](#)
[181-011-S](#) [181-057-126](#) [NKSOPBUY](#) [20500002116](#) [2064996-1](#) [20800001065](#) [2170](#) [9132](#) [2612](#) [2620](#) [9291](#) [9440F16-10S](#) [9440F20-18S](#)
[9444W32-73S](#) [9446F16-10S-190](#) [953-106-50231](#) [953-120-5003](#) [955-120-5110](#)