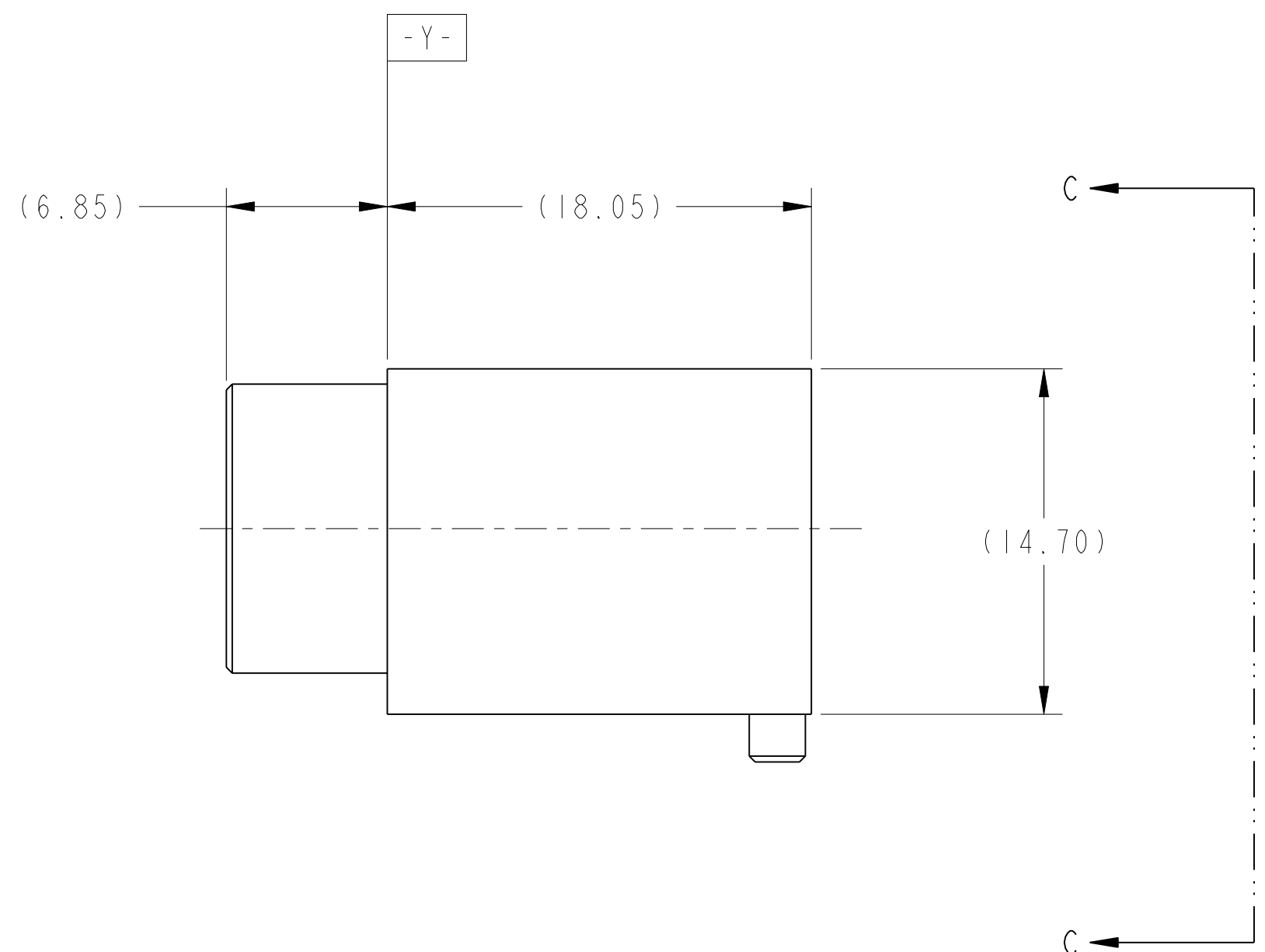
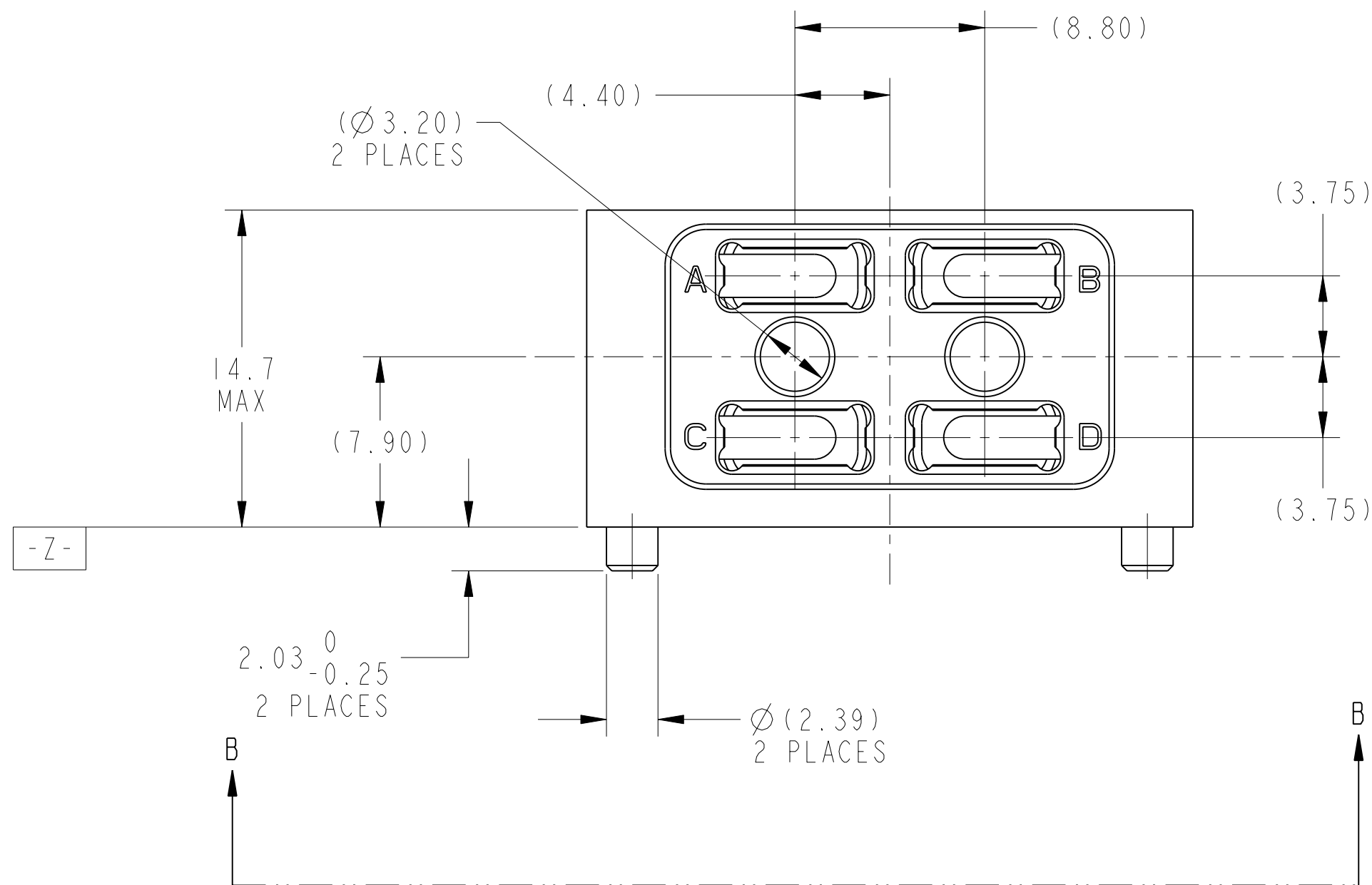
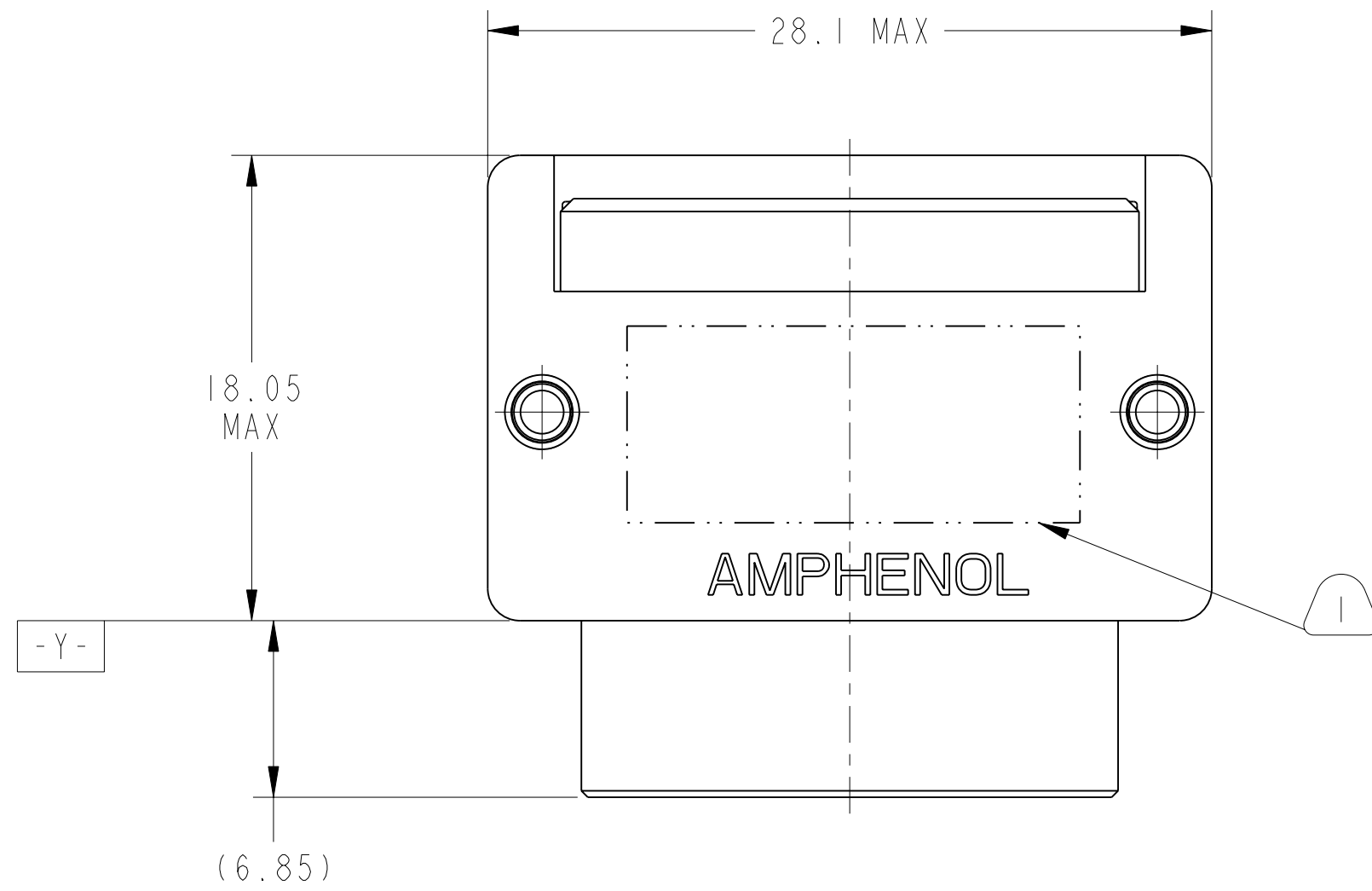


REV. PA1	SHEET 1 OF 3	DOCUMENT NO. 10-504637-010
REVISIONS		
LTR	DESCRIPTION	DATE
PA1	INITIAL RELEASE	9/25/17



METRIC DRAWING

SEE SHEET 2

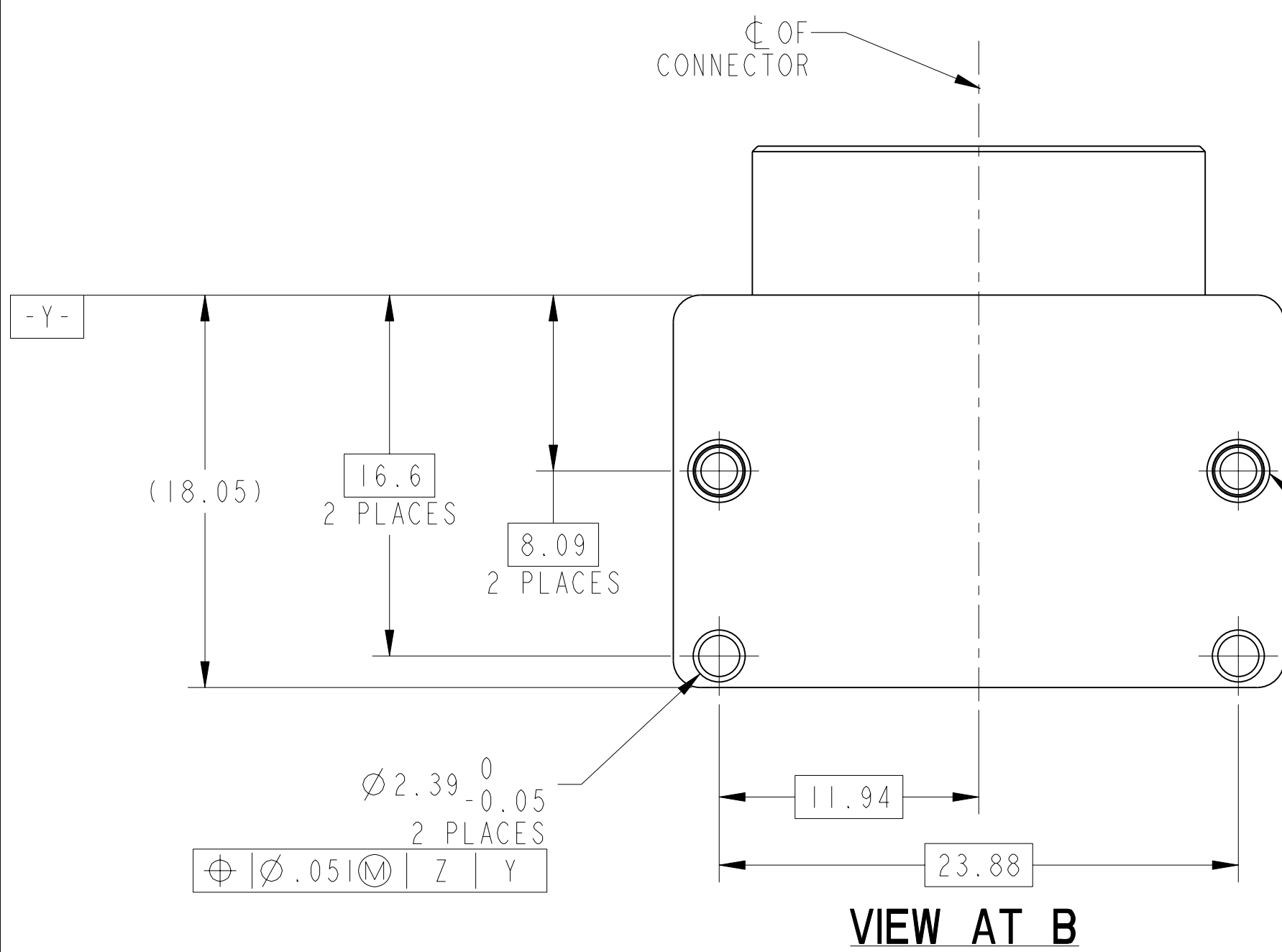
SCALE 4.000

NOTES:

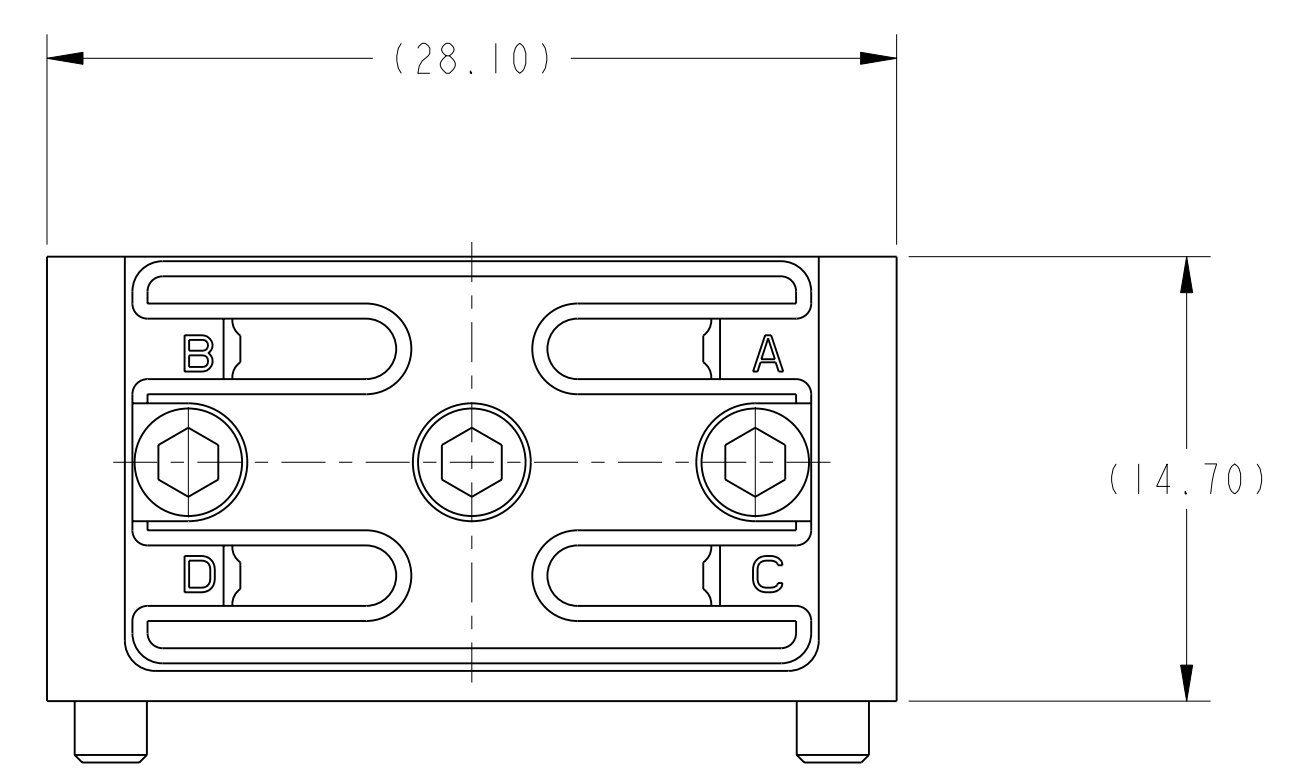
THE USE OF THIS DOCUMENT IS UNLIMITED. HOWEVER, DOCUMENTS REFERENCED HEREON MAY CONTAIN LIMITED RIGHTS DATA.

N/A	PRO/ENGINEER INFORMATION
N/A	Pro/e Model Used: 10-504637-010.DWG.ASSEM
NEXT ASSEMBLY	Drawing Name: 10-504637-010

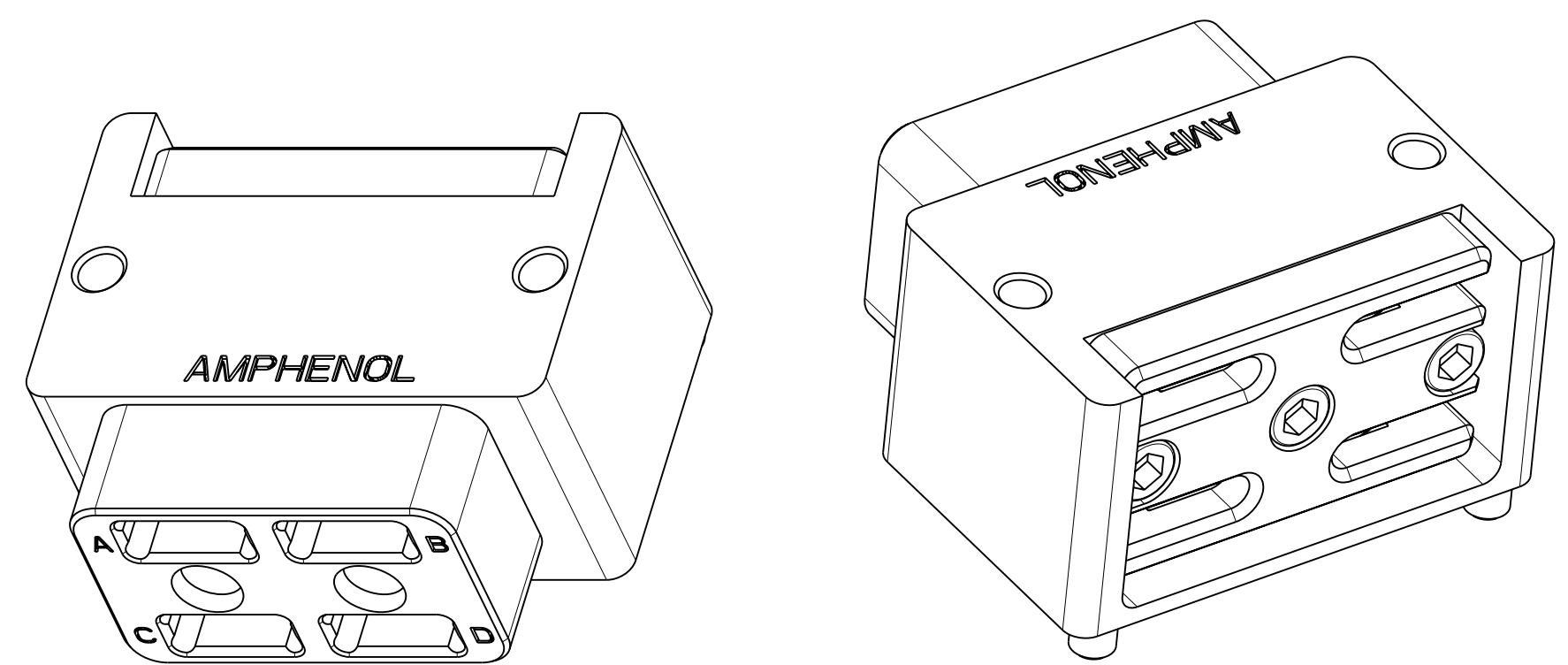
UNLESS OTHERWISE SPECIFIED		SPECIFICATIONS		POS	QTY	PART NUMBER	DESCRIPTION	NOTE
LINEAR DIMENSIONS ARE IN MILLIMETERS TOLERANCES: .XXXX = ±NA ANGLES= ±2° .XXX = ±NA .XX = ±.13 .X = ±.25		MATERIAL SPEC. NONE		APPROVALS		DATE	AMPHENOL CORPORATION <small>40-60 DELAWARE AVENUE SIDNEY, N.Y. 13838</small> CONNECTOR, FIBER OPTIC, MODULE, 4 MT SPECIAL (VITA 66.1 ENVELOPE)	
DIM. & TOL. PER ASME Y14.5M; DRM PER MIL-DTL-31000; OTHER Amphenol Sds. PER 9-3800		PROCESS SPEC. 9-3856-5 9-3895		PREPARED BY R. CHAPMAN	ENGINEER IN CHARGE E. HICKEY	25-Sep-17		
LEGENDS: =FLAG NOTE CALL OUT REFERENCE ONLY		THIRD ANGLE PROJECTION		DESIGN MANAGER R. SELFRIDGE	DESIGN ACTIVITY GROUP BLP			
				SIZE C		CAGE CODE 77820	DOCUMENT NO. 10-504637-010	REV. PA1
				SCALE: 3.0		REF: 10-504637-004	SHEET 1 OF 3	



VIEW AT B



VIEW AT C



SCALE 3.000

5. RETAINER SCREWS TO BE TIGHTENED TO A TORQUE OF 2 -3 IN-LBS. RETAINER SHOULD BE BOTTOMED ON CONNECTOR BODY.
4. INSERT CAVITIES ARE FOR A FIBER OPTIC MT FERRULE PER IEC 61754-5 MT FERRULES, PIN CLAMP ASSEMBLIES AND ASSOCIATED RIBBON CABLE ARE NOT PART OF THIS ASSEMBLY.
3. FOR CONNECTOR INSTALLATION ILLUSTRATION SEE SHEET 3.
2. FOR MATING BACKPLANE CONNECTOR ASSEMBLY, SEE DRAWING 10-504639-008.
1. BLACK INK STAMP 77820, PART NUMBER AND DATE CODE ON INDICATED SURFACE PER 9-3856-5. DATE CODE PER 9-3895. CHARACTERS TO BE $1.6 \pm .51$ (.062 \pm .005 INCH). HIGH. ADDITIONAL INFORMATION MAY BE REQUESTED BY PURCHASE ORDER. STAMPING CAN BE ON BOTH SIDES OF PART.

MATERIALS AND FINISHES

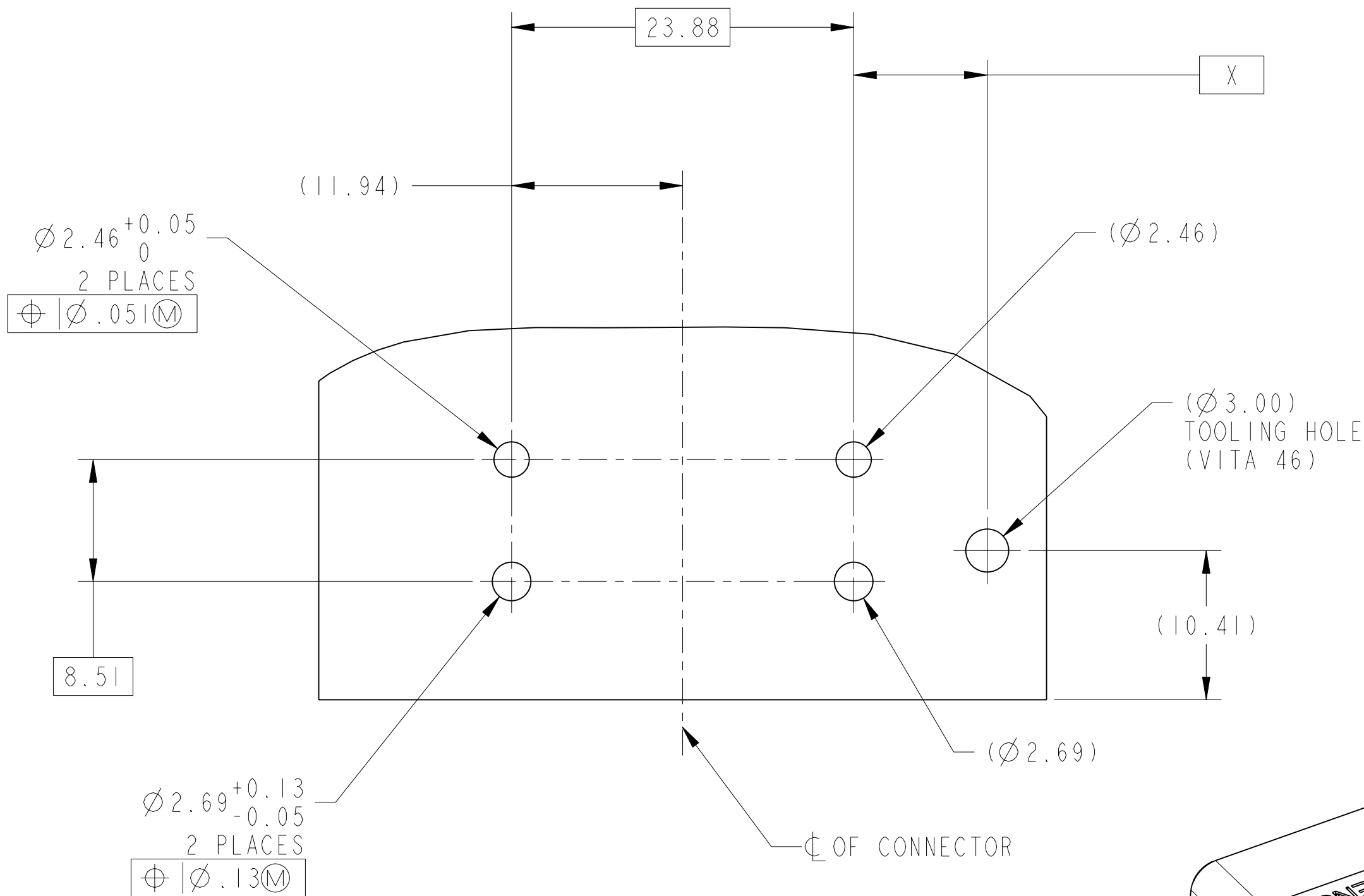
COMPONENT	MATERIAL/ FINISH
MAIN BODY	BODY - MATERIAL - ALUM. ALLOY PER AMS 4150 FINISH - CHROMATE TREATMENT PER MIL-C-5541, CL 3 HELICAL INSERTS - STAINLESS STEEL 304 SERIES PASSIVATED
MT RETAINER	BODY - MATERIAL - ALUM. ALLOY PER AMS 4150 FINISH - CHROMATE TREATMENT PER MIL-C-5541, CL 3 SCREW - STAINLESS STEEL 300 SERIES PASSIVATED

THE USE OF THIS DOCUMENT IS UNLIMITED. HOWEVER, DOCUMENTS REFERENCED HEREON MAY CONTAIN LIMITED RIGHTS DATA.

SIZE C	CAGE CODE 77820	DOCUMENT NO. 10-504637-010	REV. PA1
SCALE: 3.0	REF. 10-504637-004	SHEET 2 OF 3	

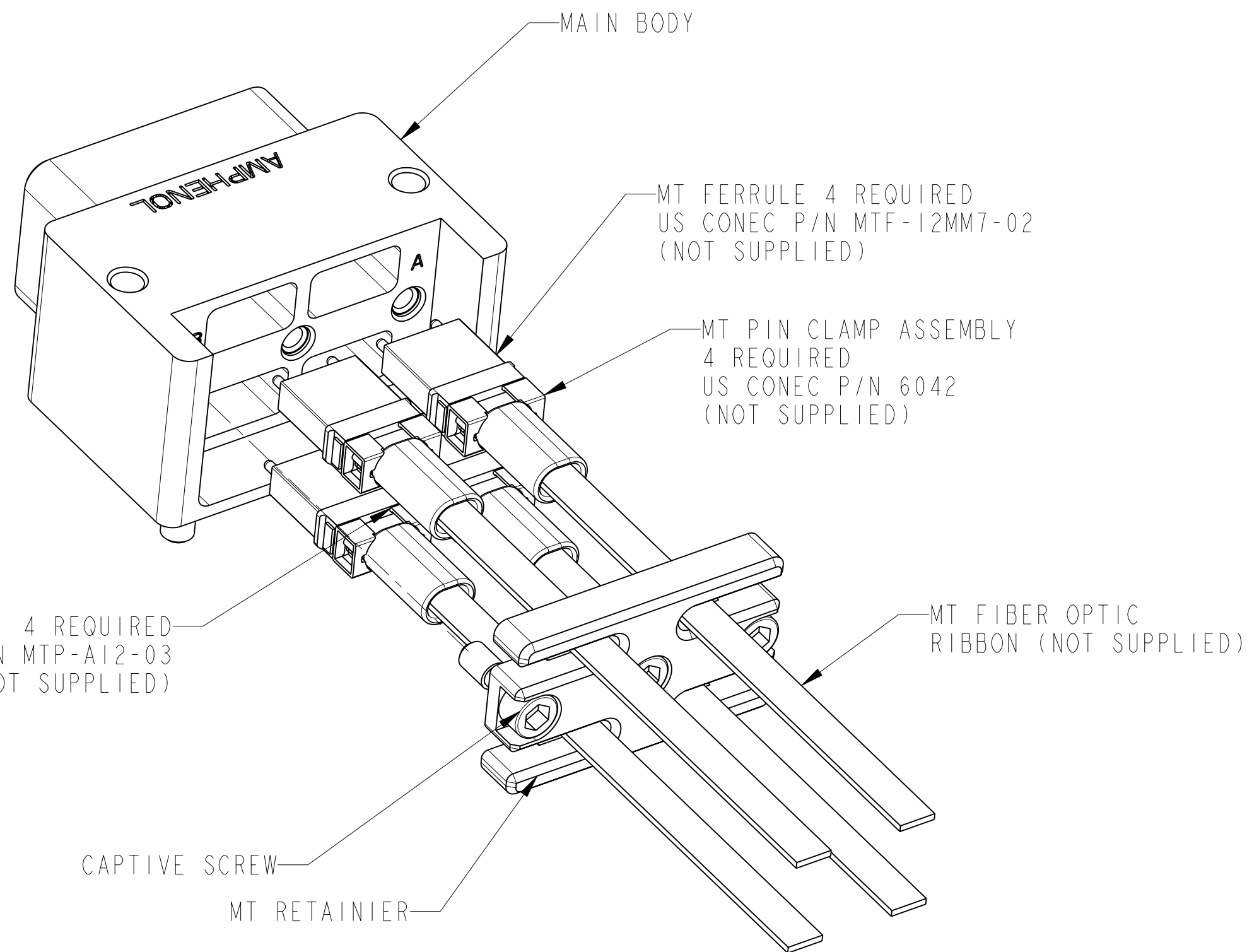
CONNECTOR LOCATION ON MODULE PCB

POSITION	DIM "X" MM (INCH)
P2	53.73
P3	96.55
P4	125.35
P5	154.15
P6	182.95



**SUGGESTED MODULE PCB
 INTERFACE DIMENSIONS**

SCALE 3.000



**REAR EXPLODED
 ASSEMBLY VIEW**

SCALE 3.000

THE USE OF THIS DOCUMENT IS UNLIMITED. HOWEVER, DOCUMENTS REFERENCED HEREON MAY CONTAIN LIMITED RIGHTS DATA.

SIZE	CAGE CODE	DOCUMENT NO.	REV.
C	77820	10-504637-010	PA1
SCALE: 3.0	REF. 10-504637-004	SHEET 3 OF 3	

X-ON Electronics

Largest Supplier of Electrical and Electronic Components

Click to view similar products for [Fibre Optic Connectors](#) category:

Click to view products by [Amphenol](#) manufacturer:

Other Similar products are found below :

[0004700001](#) [6100-R](#) [6313](#) [F709722200](#) [F709730000](#) [F718183204](#) [F727403500](#) [F727752800](#) [8119](#) [9440F20-27S-190](#) [944-120-6001](#)
[9441F10SL-3S](#) [9444W28-21S](#) [9444W36-10S](#) [9446W20-16S](#) [953-101-5310-P](#) [954-101-57202B](#) [A0270169](#) [12-9122](#) [12-5702](#) [AX101713](#)
[AX102420](#) [AX103923](#) [AX104024](#) [AX104193](#) [AX104230](#) [AX104562](#) [AX105203-B25](#) [AX105205-S1](#) [EHSC2M](#) [17-300800](#) [181-011-126](#)
[181-011-S](#) [181-057-126](#) [NKSOPBUY](#) [20500002116](#) [2064996-1](#) [20800001065](#) [2170](#) [9132](#) [2612](#) [2620](#) [9291](#) [9440F16-10S](#) [9440F20-18S](#)
[9444W32-73S](#) [9446F16-10S-190](#) [953-106-50231](#) [953-120-5003](#) [955-120-5110](#)