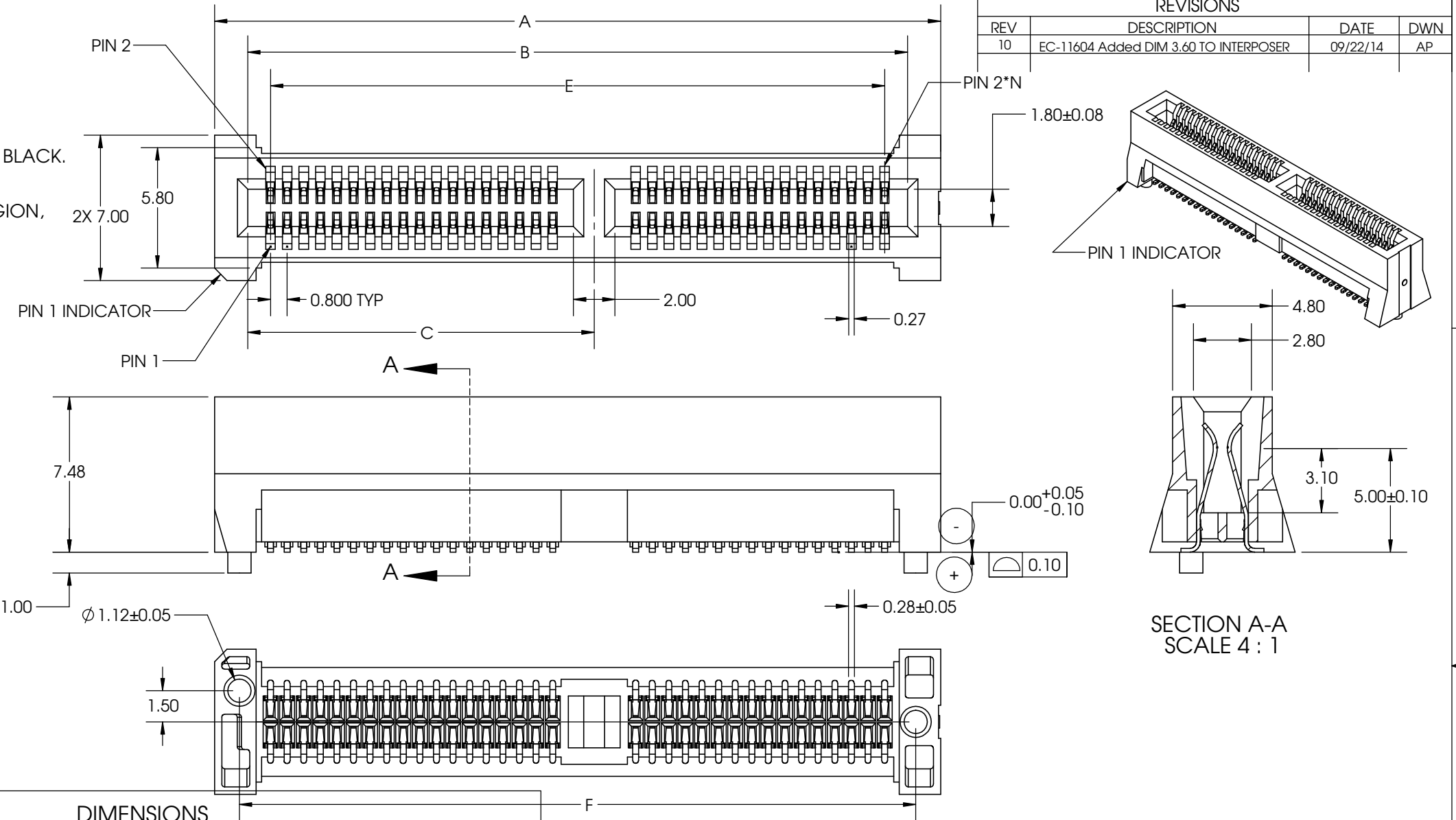


PART NUMBER  
11216-XXX

REVISIONS			
REV	DESCRIPTION	DATE	DWN
10	EC-11604 Added DIM 3.60 TO INTERPOSER	09/22/14	AP

- NOTES:
- MATERIAL:  
HOUSING: HIGH TEMPERATURE THERMOPLASTIC, UL94V-0, BLACK.  
CONTACT: COPPER ALLOY  
CONTACT PLATING: UNDERPLATE WITH NICKEL,  
0.76 MICROMETER MINIMUM HARD GOLD IN MATING REGION,  
PURE MATTE TIN AT SOLDER TAIL.
  - ELECTRICAL SPECIFICATION:  
CONTACT RESISTANCE: 15 MILLIOHM MAXIMUM.  
INSULATOR RESISTANCE: 100 MEGOHM MINIMUM.  
DIELECTRIC WITHSTANDING VOLTAGE: 500V AC.
  - MATING EDGE CARD THICKNESS: 1.57±0.16 MILLIMETER.



PART NO.	DUAL POSN N	PIN OUT	KEY	DIMENSIONS								
				A	B	C	D	E	F	G	H	J
11216-017	17	No Key	No Key	18.20	15.00	-	-	12.80	15.80	14.85 +/- .08	-	-
11216-018	18	No Key	No Key	19.00	15.80	-	-	13.60	16.60	15.40 +/- .05	-	-
11216-025	25	6/19		27.80	24.60	7.10	8.00	22.40	25.40	24.45	6.000	7.03
11216-032	32	18/14		33.40	30.20	16.70	17.60	28.00	31.00	31.65	15.600	16.63
11216-034	34	No Key	No Key	31.80	28.60	-	-	26.40	29.40	28.40 +/- .05	-	-
11216-040	40	22/18		39.80	36.60	19.90	20.80	34.40	37.40	36.45	18.800	19.83
11216-050	50	27/23		47.80	44.60	23.90	24.80	42.40	45.40	44.45	22.800	23.83
11216-060	60	32/28		55.80	52.60	27.90	28.80	50.40	53.40	52.45	26.800	27.83
11216-070	70	32/38		63.80	60.60	27.90	28.80	58.40	61.40	60.45	26.800	27.83
11216-080	80	32/48		71.80	68.60	27.90	28.80	66.40	69.40	68.45	26.800	27.83
11216-090	90	32/58		79.80	76.60	27.90	28.80	74.40	77.40	76.45	26.800	27.83
11216-100	100	32/68		87.80	84.60	27.90	28.80	82.40	85.40	84.45	26.800	27.83



THIS DOCUMENT CONTAINS CONFIDENTIAL AND PROPRIETARY INFORMATION OF AMPHENOL INTERCON SYSTEMS AND MAY NOT BE DISCLOSED, REPRODUCED OR OTHERWISE USED WITHOUT WRITTEN PERMISSION

ALL DIMENSIONS AND TOLERANCES PER ASME Y14.5M-2009  
ALL DIMENSIONS ARE IN MILLIMETERS UNLESS OTHERWISE SPECIFIED

INSPECTION  
 ◇ FIRST PIECE  
 △ SPC  
 ○ IN-PROCESS

THIRD ANGLE PROJECTION

TOLERANCES UNLESS SPECIFIED OTHERWISE  
 1PLC ± 0.3  
 2PLC ± 0.13  
 3PLC ± 0.050  
 ANGLES ± 1°

MATERIAL [1] FINISH [2]

**Amphenol InterCon Systems** AMPHENOL INTERCON SYSTEMS INC.  
HARRISBURG, PA 17110

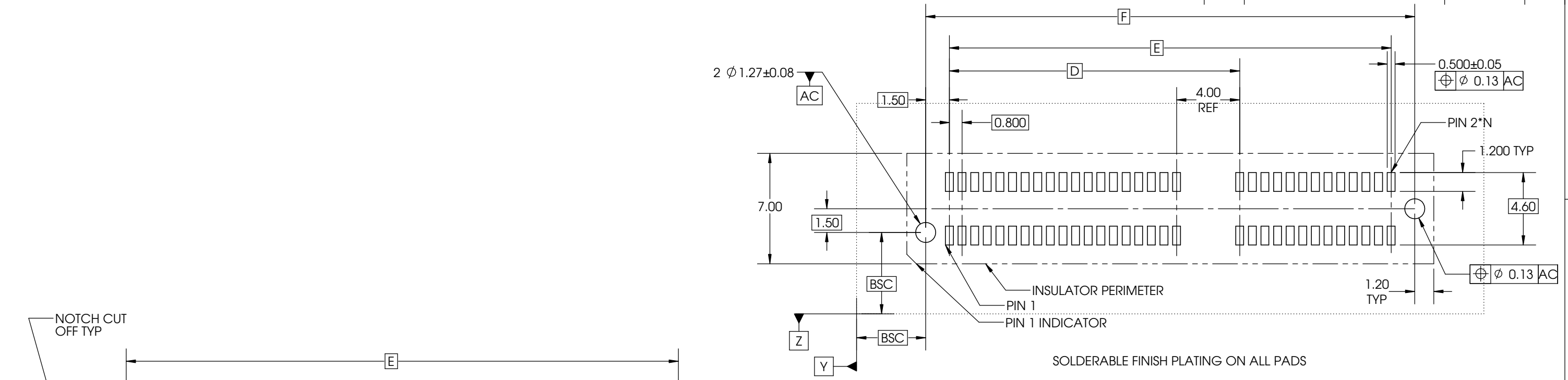
NAME: **ENHANCED EDGE CARD ASSEMBLY, 0.8mm PITCH**

SIZE: **B** PROD CODE: 423 DRAWING NUMBER: C- 11216 REV: 10

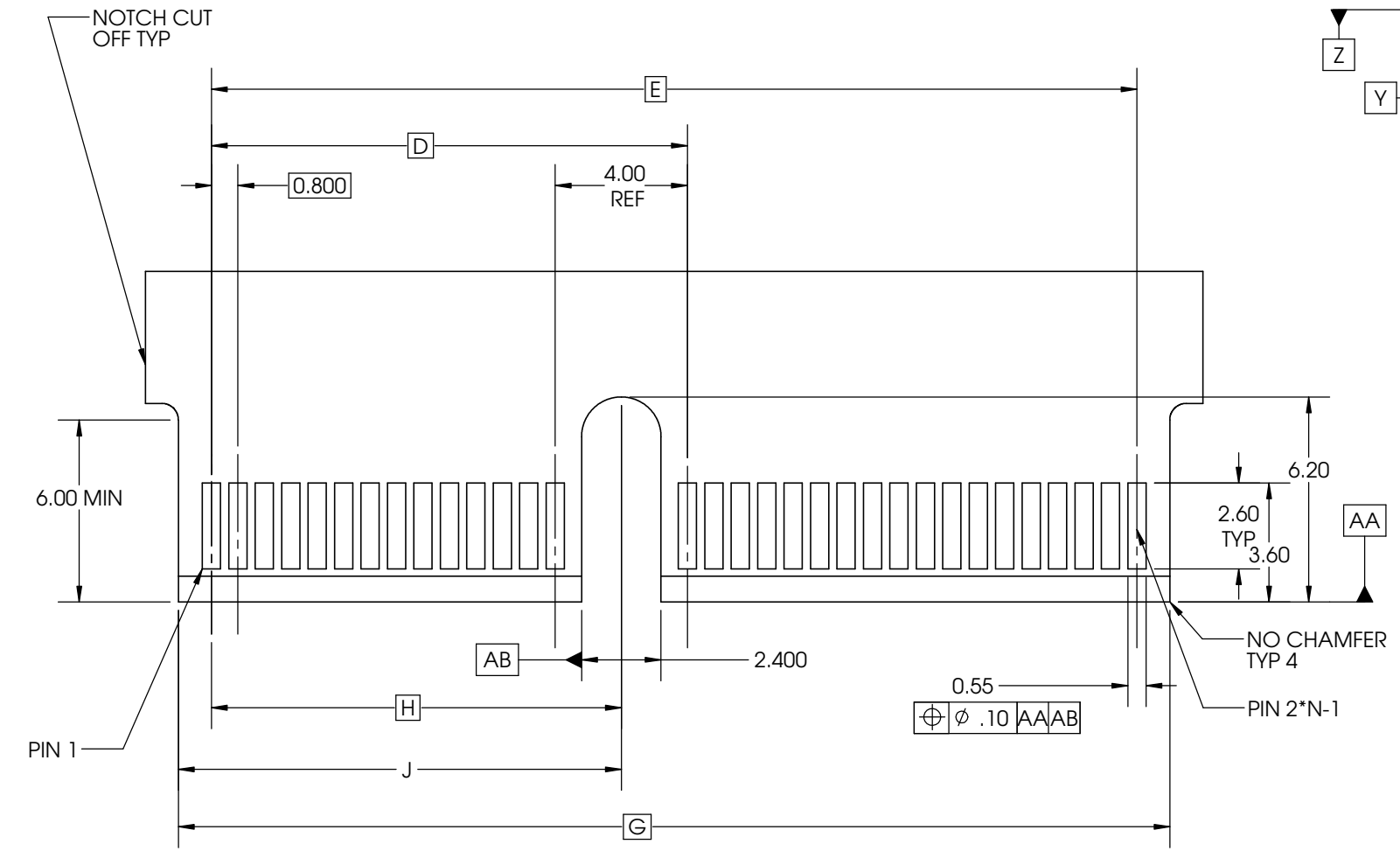
SCALE: 2:1 CUSTOMER SHEET 1 OF 2

PART NUMBER

REVISIONS			
REV	DESCRIPTION	DATE	DWN
10	SEE SHEET 1		

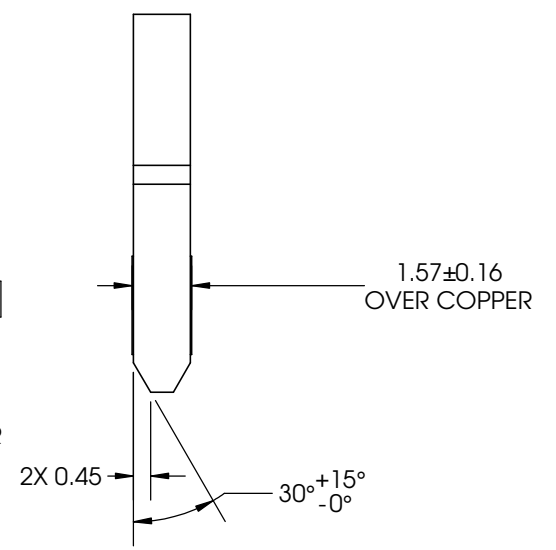


**RECOMMENDED CONNECTOR FOOTPRINT LAYOUT  
COMPONENT SIDE SHOWN**



FINISH PLATING: 0.75 MICROMETER MINIMUM HARD GOLD PER ASTM B 488 TYPE 2, GRADE C  
UNDERPLATE: 1.25 MICROMETER MINIMUM NICKEL.

**RECOMMENDED MATING CARD LAYOUT**



**Amphenol** AMPHENOL INTERCON SYSTEMS INC.  
HARRISBURG, PA 17110

THIS DOCUMENT CONTAINS CONFIDENTIAL AND PROPRIETARY INFORMATION OF AMPHENOL INTERCON SYSTEMS AND MAY NOT BE DISCLOSED, REPRODUCED OR OTHERWISE USED WITHOUT WRITTEN PERMISSION	
ALL DIMENSIONS AND TOLERANCES PER ASME Y14.5M-2009 ALL DIMENSIONS ARE IN MILLIMETERS UNLESS OTHERWISE SPECIFIED	THIRD ANGLE PROJECTION
INSPECTION ◇ FIRST PIECE △ SPC ○ IN-PROCESS	TOLERANCES UNLESS SPECIFIED OTHERWISE 1PLC ± 0.13 2PLC ± 0.05 3PLC ± 0.025 ANGLES ± 1°

NAME <b>ENHANCED EDGE CARD ASSEMBLY, 0.8mm PITCH</b>			
SIZE <b>B</b>	PROD CODE 423	DRAWING NUMBER C- 11216	REV 10

**METRIC**

MATERIAL 1	FINISH 2	SCALE 5:1	CUSTOMER	SHEET 2 OF 2
---------------	-------------	--------------	----------	-----------------

## X-ON Electronics

Largest Supplier of Electrical and Electronic Components

*Click to view similar products for [Standard Card Edge Connectors](#) category:*

*Click to view products by [Amphenol](#) manufacturer:*

Other Similar products are found below :

[CR7E-30DB-3.96E\(72\)](#) [6565204-6](#) [PKC-156](#) [1437274-4](#) [147889-1](#) [1489165-4](#) [EBT15622B2X](#) [1-582587-1](#) [284-0102-12100](#)  
[306022901000000](#) [307-012-502-202](#) [307-056-520-300](#) [245-062-520-350](#) [287-0032-12101](#) [306-028-525-102](#) [307-072-526-202](#) [345-060-559-](#)  
[303](#) [392-008-559-201](#) [534671-1](#) [341-240-317](#) [345-044-500-300](#) [346-240-318](#) [395-100-524-300](#) [09-07-2032](#) [10035388-802LF](#) [10122859-](#)  
[009LF](#) [10127905-B04B24BLF](#) [530555-1](#) [5-678046-1](#) [73726-0005](#) [66308-1](#) [1-1437275-6](#) [PEC-07-02-T-S-A](#) [346-014-520-801](#) [307-048-502-](#)  
[202](#) [CE100F22-9-C](#) [CE100F26-7-C](#) [CE100F28-3-D](#) [CE156F18-9-C](#) [CE156F22-5-D](#) [CE156F22-9-C](#) [CT100F22-2-D](#) [CT100F22-3-D](#)  
[CT100F24-2-D](#) [CT100F24-3-D](#) [CT100F24-6-C](#) [CT156F22-4-D](#) [MLSS100-12-C](#) [MLSS100-16-C](#) [SCC100F-11-C](#)