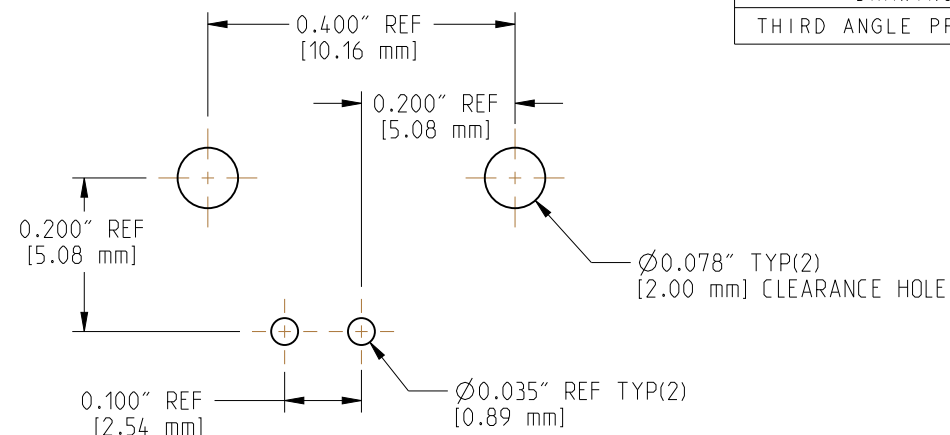


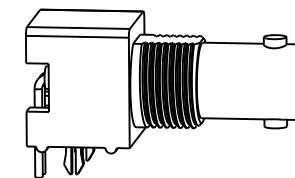
NOTES:

1. MECHANICAL CHARACTERISTICS:
 - A. MATING / UNMATING - 500 CYCLES
2. ELECTRICAL CHARACTERISTICS:
 - A. NORMAL IMPEDANCE : 50 OHMS
 - B. FREQUENCY RANGE : 0-1 GHz
 - C. OPERATING VOLTAGE - 500 VOLTS RMS
 - D. CONTACT RESISTANCE - 3.0 MILLIOHMS MAX.(GOLD)
 - E. DIELECTRIC WITHSTANDING VOLTAGE - 1500 VOLTS RMS
 - F. INSULATION RESISTANCE - 5000 MEGAOHMS MIN.
3. ENVIRONMENTAL CHARACTERISTICS:
 - A. TEMPERATURE RANGE - -65°C TO +165°C

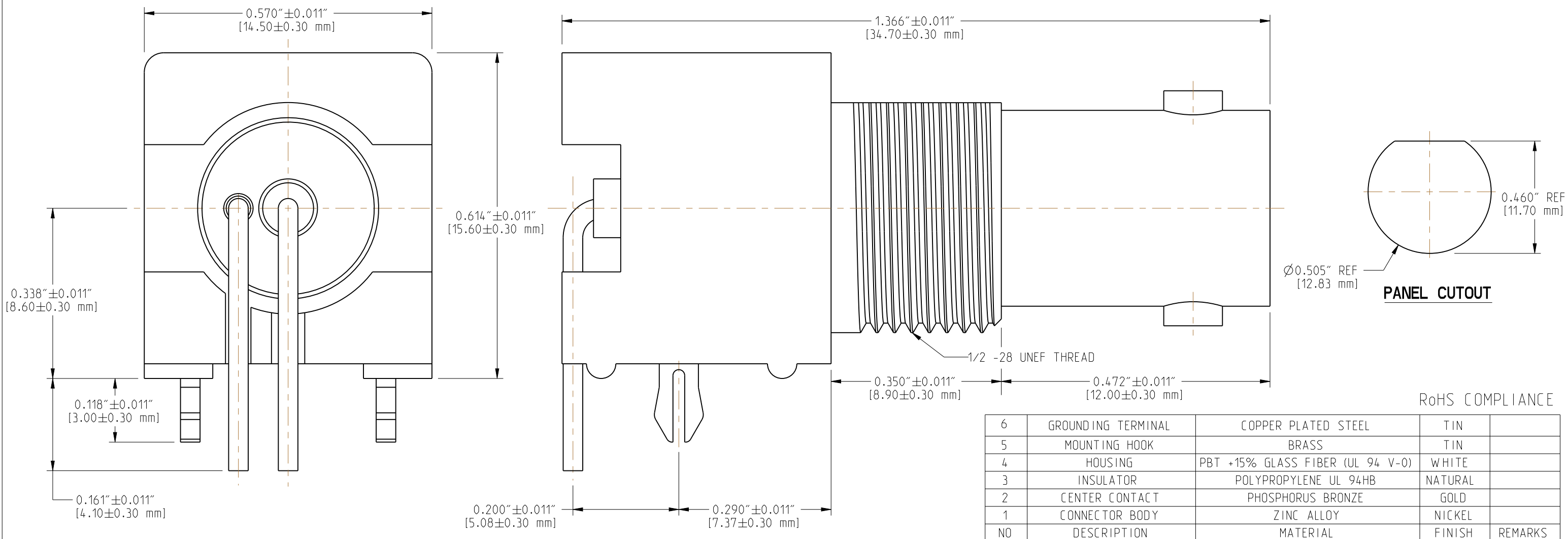
112412		REVISIONS			
DRAWING NO.	REV	DESCRIPTION	DATE	ECO	APPR
THIRD ANGLE PROJ.	A	UPDATE DRAWING FORMAT/MODIFY BODY	12-Feb-04	--	
	B	REVISING HOUSING COLOR TO WHITE, BODY HEIGHT TO 15.60 mm	18-Sep-06	--	
	C	REVISE BACK HOUSING SHOWING BACK CONTACT PINS CAPTIVATED	28-Jun-07	--	
	D	HARDWARE REMOVED	02-Feb-10	--	
	E	CORRECT DIMENSIONAL ERRORS, ADD SPECIFICATIONS, UPDATE FORMAT	04-Jun-13	2477	MB



RECOMMENDED P.C.B. LAYOUT



SCALE 1.000



UNLESS OTHERWISE SPECIFIED, DIMENSIONS ARE IN INCHES AND TOLERANCES ARE: 2 PLACE DECIMAL ±.015 (0,381 mm) 3 PLACE DECIMAL ±.005 (0,127 mm) ANGLES ± 1°	MATERIAL	SEE BOM TABLE	DRAWN	MOHAN	DATE	04-Jun-13	TITLE BNC RIGHT ANGLE PCB MOUNT RECEPTACLE JACK (50 OHMS),	Amphenol Connex	
	REFERENCE		ENGINEER	MOHAN	DATE	04-Jun-13			
			APPROVED		DATE				
			CAD FILE		DWG SIZE	B		DRAWING NO.	112412

NOTICE - These drawings, specifications, or other data (1) are, and remain the property of Amphenol Corp. (2) must be returned upon request; and (3) are confidential and not to be disclosed to any person other than those to whom they are given by Amphenol Corp. The furnishing of these drawings, specifications, or other data by Amphenol Corp., or to any other person to anyone for any purpose is not to be regarded by implication or otherwise in any manner licensing, granting rights or permitting such holder or any other person to manufacture, use or sell any product, process or design, patented or otherwise, that may in any way be related to or disclosed by said drawings, specifications, or other data.

X-ON Electronics

Largest Supplier of Electrical and Electronic Components

Click to view similar products for [RF Connectors / Coaxial Connectors](#) category:

Click to view products by [Amphenol](#) manufacturer:

Other Similar products are found below :

[8915-1511-000](#) [89674-0827](#) [6001-7071-019](#) [6002-7051-003](#) [6002-7551-202](#) [6059674-1](#) [619550-1](#) [630059-000](#) [M39030/3-01N](#) [M3933/25-36N](#) [6500-7071-046](#) [6769](#) [CX050L2AQ](#) [7002-1542-011](#) [7004-1512-000](#) [7009-1511-004](#) [7010-1511-000](#) [7029-1511-060](#) [7101-1541-010](#) [7101-1571-002](#) [7105-1521-002](#) [7145-1521-002](#) [7203-1571-003](#) [7209-1511-011](#) [7210-1511-015](#) [7210-1511-019](#) [73137-5015](#) [73216-2241](#) [7325-1512-000](#) [73404-2300](#) [7405-1521-005](#) [7405-1521-802](#) [7406-1521-005](#) [8527](#) [8547](#) [FS11V](#) [8808-1511-001](#) [9049-9513-000](#) [9074-9513-000](#) [9101-9573-002](#) [910A205F](#) [9130-9573-002](#) [PL11SC-026](#) [PL375-33](#) [PL40-5](#) [PL71-9](#) [PL74C-221](#) [PL75MC-217](#) [PL803-7](#) [980-8666-005](#)