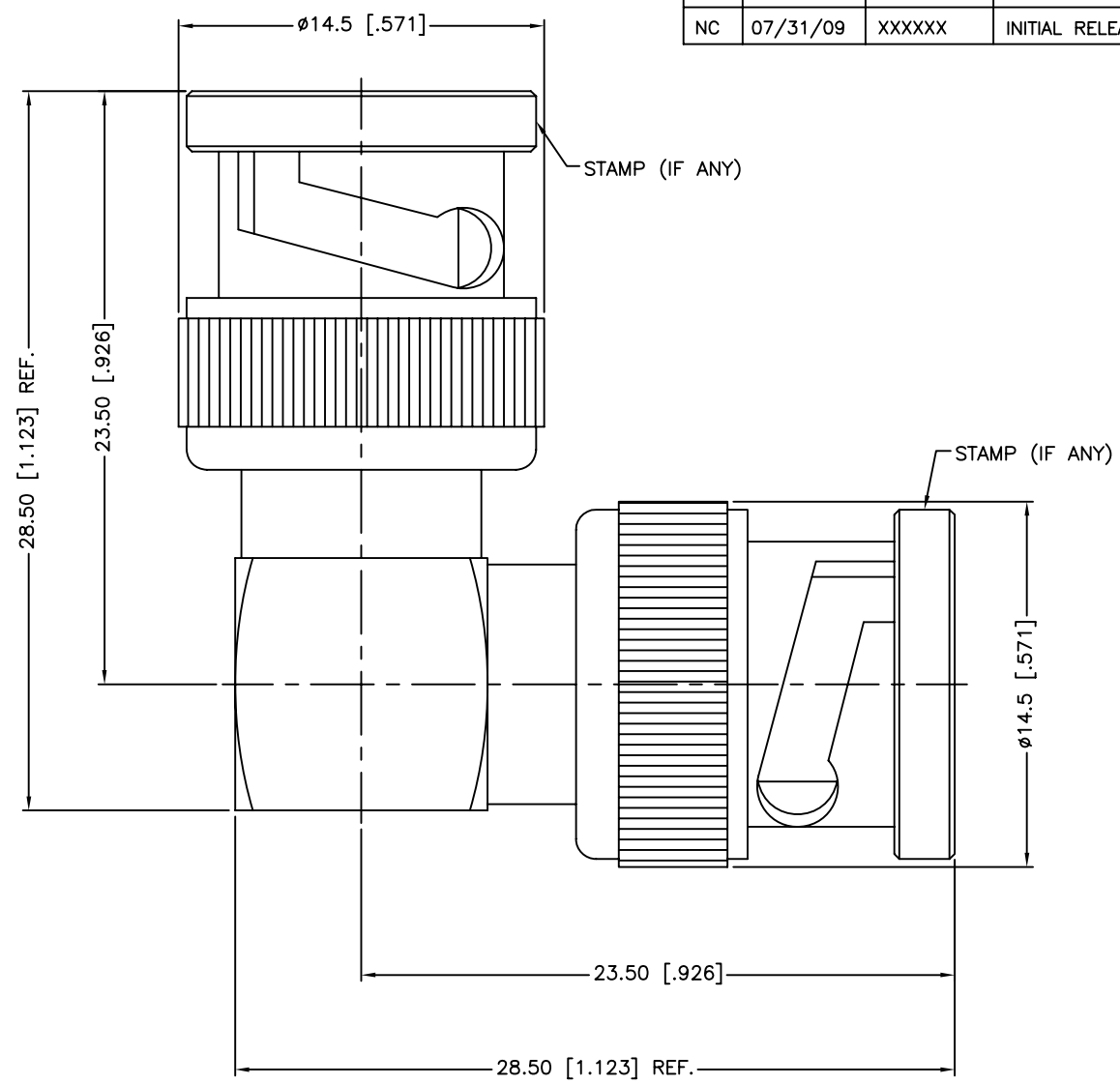


REV.	DATE	ECR NO.	DESCRIPTION
NC	07/31/09	XXXXXX	INITIAL RELEASE



DESCRIPTION	MATERIAL	FINISH	QTY
11 COVER	BRASS	NICKEL	1
10 CONTACT PIN	BRASS	GOLD	2
9 WASHER	BRASS	NICKEL	2
8 SPRING	SK5	NICKEL	4
7 RETAINER RING	BRASS	NICKEL	2
6 GASKET	RUBBER	RED	2
5 CONTACT PIN	BRASS	GOLD	1
4 INSULATOR	PTFE	NATURAL	2
3 BODY	BRASS	NICKEL	1
2 HOUSING	BRASS	NICKEL	1
1 SHELL	BRASS	NICKEL	2

UNLESS OTHERWISE SPECIFIED DIMENSIONS ARE IN MILLIMETERS. DIMENSIONS IN [ ] ARE IN INCHES AND FOR CUSTOMER REFERENCE ONLY.

UNLESS OTHERWISE SPECIFIED TOLERANCES FOR MILLIMETERS ARE:  
0.5 - 8mm ± 0.20mm  
8 - 30mm ± 0.40mm  
30 - 120mm ± 0.50mm

UNLESS OTHERWISE SPECIFIED TOLERANCES FOR INCHES ARE:  
.020 - .315 = ± 0.007"  
.315 - 1.180 = ± 0.015"  
1.180 - 4.724 = ± 0.020"

DO NOT SCALE DRAWING

APPROVALS	DATE
DRAWN M.ZHANG	07/31/09
CHECKED	
ISSUED	
SHEET 1 OF 1	
CAD FILE	C:/CONNEX/112655.DWG

**Amphenol Connex**

PART DESCRIPTION  
**BNC MALE TO MALE R/A ADAPTOR**

PART NO.  
**112655**

DWG. NO. 112655.DWG	REV. NC	SIZE A	SCALE NA
---------------------	---------	--------	----------

## X-ON Electronics

Largest Supplier of Electrical and Electronic Components

*Click to view similar products for [RF Adapters - In Series](#) category:*

*Click to view products by [Amphenol](#) manufacturer:*

Other Similar products are found below :

[5916-1103-603](#) [5918-1103-000](#) [5919-1503-000](#) [651A505](#) [82-5552](#) [9030-9523-502](#) [A0407000](#) [R114703000W](#) [R125704000](#) [R125771001](#)  
[R141710000W](#) [R141723161](#) [R141730000](#) [R143730700](#) [R143770000](#) [R161703000W](#) [R161730000](#) [R161753000W](#) [R161791530W](#)  
[R201705000](#) [R222705200](#) [R222M40010W](#) [R223703180](#) [R316754000](#) [R405006000](#) [R443162000](#) [AD78TL](#) [HRM-513S](#) [1996352-2](#)  
[2157155-1](#) [252169-75](#) [AD158](#) [2101130-1](#) [252186](#) [R114704000W](#) [R114720000W](#) [R125705001](#) [R125705701](#) [R125771000](#) [R125771001W](#)  
[R125791501W](#) [R127704001](#) [R127.870.001](#) [R127872001](#) [R141717000](#) [R142710000](#) [R142723000](#) [R143703000](#) [R143704000](#) [R143705700](#)