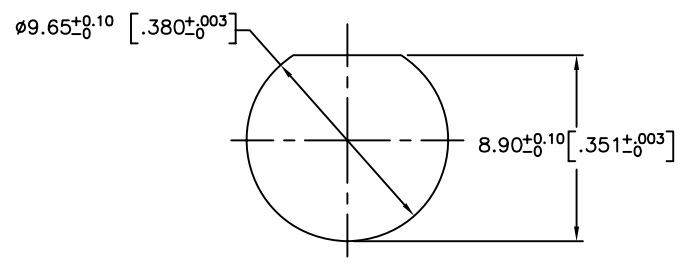
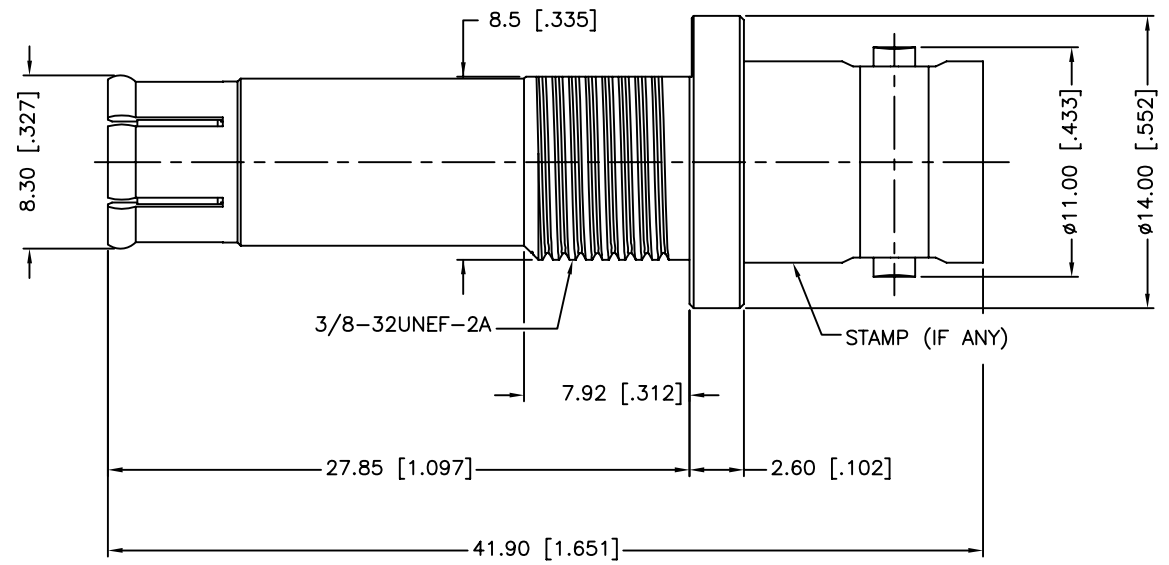
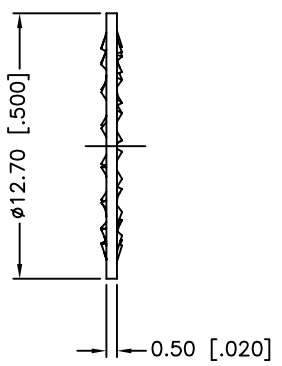
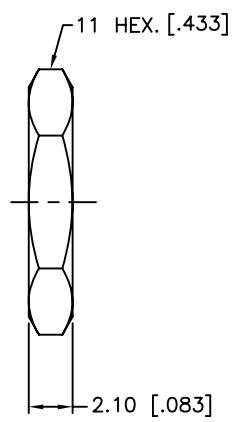


| REV. | DATE     | ECR NO. | DESCRIPTION     |
|------|----------|---------|-----------------|
| NC   | 09/24/09 | XXXXXX  | INITIAL RELEASE |



RECOMMENDED MOUNTING HOLE



- 1. FREQUENCY RANGE: DC 0-3 GHZ
- 2. VSWR: 1.15, MAX.
- 3. MAX. PANEL THICKNESS=4.5 mm

| 7           | HEX NUT       | BRASS       | NICKEL  | 1 |
|-------------|---------------|-------------|---------|---|
| 6           | LOCK WASHER   | BRASS       | NICKEL  | 1 |
| 5           | RETAINER RING | BER. COPPER | NICKEL  | 1 |
| 4           | INSULATOR     | PTFE        | NATURAL | 1 |
| 3           | CONTACT PIN   | BER. COPPER | GOLD    | 1 |
| 2           | LOCK RING     | BRASS       | NICKEL  | 1 |
| 1           | BODY          | BRASS       | NICKEL  | 1 |
| DESCRIPTION | MATERIAL      | FINISH      | QTY     |   |

UNLESS OTHERWISE SPECIFIED DIMENSIONS ARE IN MILLIMETERS. DIMENSIONS IN [ ] ARE IN INCHES AND FOR CUSTOMER REFERENCE ONLY.

UNLESS OTHERWISE SPECIFIED TOLERANCES FOR MILLIMETERS ARE:  
0.5 - 8mm ± 0.20mm  
8 - 30mm ± 0.40mm  
30 - 120mm ± 0.50mm

UNLESS OTHERWISE SPECIFIED TOLERANCES FOR INCHES ARE:  
.020 - .315 ± 0.007"  
.315 - 1.180 ± 0.015"  
1.180 - 4.724 ± 0.020"

DO NOT SCALE DRAWING

| APPROVALS     | DATE                 |
|---------------|----------------------|
| DRAWN M.ZHANG | 09/24/09             |
| CHECKED       |                      |
| ISSUED        |                      |
| SHEET 1 OF 1  |                      |
| CAD FILE      | C:/CONNEX/112769.DWG |

**Amphenol Connex**

PART DESCRIPTION  
**BNC BULKHEAD JACK TO PUSH-ON PLUG ADAPTOR**

PART NO.  
**112769**

DWG. NO. 112769.DWG    REV. NC    SIZE A    SCALE NA

## X-ON Electronics

Largest Supplier of Electrical and Electronic Components

*Click to view similar products for [RF Adapters - In Series category:](#)*

*Click to view products by [Amphenol manufacturer:](#)*

Other Similar products are found below :

[5916-1103-603](#) [5918-1103-000](#) [5919-1503-000](#) [651A505](#) [82-5552](#) [9030-9523-502](#) [A0407000](#) [R114703000W](#) [R125704000](#) [R125771001](#)  
[R141710000W](#) [R141723161](#) [R141730000](#) [R143730700](#) [R143770000](#) [R161703000W](#) [R161730000](#) [R161753000W](#) [R161791530W](#)  
[R201705000](#) [R222705200](#) [R222M40010W](#) [R223703180](#) [R316754000](#) [R405006000](#) [R443162000](#) [AD78TL](#) [HRM-513S](#) [1996352-2](#)  
[2157155-1](#) [252169-75](#) [AD158](#) [2101130-1](#) [252186](#) [R114704000W](#) [R114720000W](#) [R125705001](#) [R125705701](#) [R125771000](#) [R125771001W](#)  
[R125791501W](#) [R127704001](#) [R127.870.001](#) [R127872001](#) [R141717000](#) [R142710000](#) [R142723000](#) [R143703000](#) [R143704000](#) [R143705700](#)