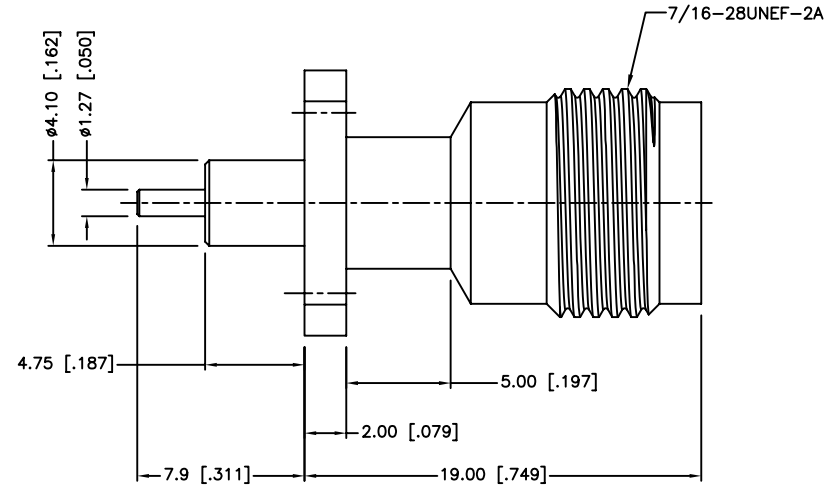
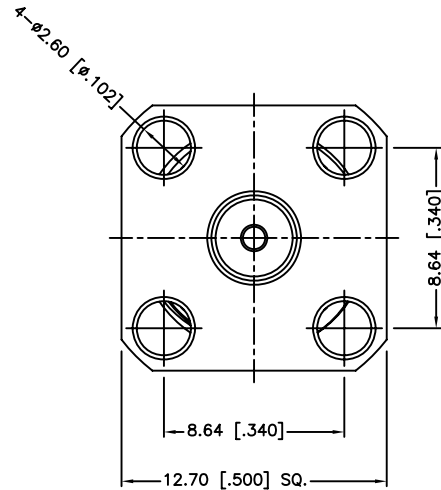
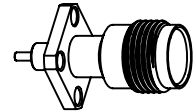


REV.	DATE	ECR NO.	DESCRIPTION
NC	02/06/97	XXXXXX	INITIAL RELEASE
A	01/17/14	2553	UPDATE DRAWING FORMAT AND CORRECT INSULATOR'S DIMENSION



- NOTES:
1. IMPEDANCE:50 OHM
 2. FREQUENCY RANGE: DC 0 – 11 GHz
 3. DIELECTRIC WITHSTANDING VOLTAGE:1500 VRMS. MIN.
 4. DURABILITY:500 CYCLES MIN.
 5. TEMPERATURE RANGE:-65°C TO +165°C

UNLESS OTHERWISE SPECIFIED DIMENSIONS ARE IN MILLIMETERS. DIMENSIONS IN [] ARE IN INCHES AND FOR CUSTOMER REFERENCE ONLY.
 UNLESS OTHERWISE SPECIFIED
 TOLERANCES FOR MILLIMETERS ARE:
 <0.5 ± 0.05mm
 0.5 – 6mm ± 0.10mm
 6 – 30mm ± 0.20mm
 30 – 120mm ± 0.30mm
 ANGLES ± 1°
 UNLESS OTHERWISE SPECIFIED
 TOLERANCES FOR INCHES ARE:
 <.020 ± 0.002"
 .020 – .236 = ± 0.004"
 .236 – 1.180 = ± 0.007"
 1.180 – 4.724 = ± 0.012"
 ANGLES ± 1°

APPROVALS		DATE
DRAWN	S.LI	01/17/14
CHECKED		
ISSUED		
SHEET	1 OF 1	
CAD FILE	C:/CONNEX/122385.DWG	

Amphenol Connex

PART DESCRIPTION			
TNC PANEL RECEPT JACK			
PART NO.		122385	
DWG. NO.	122385.DWG	REV.	A
SIZE	A	SCALE	NA

DESCRIPTION	MATERIAL	FINISH	QTY
4 LOCK RING	BRASS	NICKEL	1
3 CONTACT PIN	PHOSPHOR BRONZE	GOLD	1
2 INSULATOR	PTFE	NATURAL	1
1 BODY	BRASS	NICKEL	1

DO NOT SCALE DRAWING

X-ON Electronics

Largest Supplier of Electrical and Electronic Components

Click to view similar products for [RF Connectors / Coaxial Connectors](#) category:

Click to view products by [Amphenol](#) manufacturer:

Other Similar products are found below :

[8915-1511-000](#) [89674-0827](#) [6001-7071-019](#) [6002-7051-003](#) [6002-7551-202](#) [6059674-1](#) [619550-1](#) [630059-000](#) [M39030/3-01N](#) [M3933/25-36N](#) [6500-7071-046](#) [6769](#) [CX050L2AQ](#) [7002-1542-011](#) [7004-1512-000](#) [7009-1511-004](#) [7010-1511-000](#) [7029-1511-060](#) [7101-1541-010](#) [7101-1571-002](#) [7105-1521-002](#) [7145-1521-002](#) [7203-1571-003](#) [7209-1511-011](#) [7210-1511-015](#) [7210-1511-019](#) [73137-5015](#) [73216-2241](#) [7325-1512-000](#) [73404-2300](#) [7405-1521-005](#) [7405-1521-802](#) [7406-1521-005](#) [8527](#) [8547](#) [FS11V](#) [8808-1511-001](#) [9049-9513-000](#) [9074-9513-000](#) [9101-9573-002](#) [910A205F](#) [9130-9573-002](#) [PL11SC-026](#) [PL375-33](#) [PL40-5](#) [PL71-9](#) [PL74C-221](#) [PL75MC-217](#) [PL803-7](#) [980-8666-005](#)