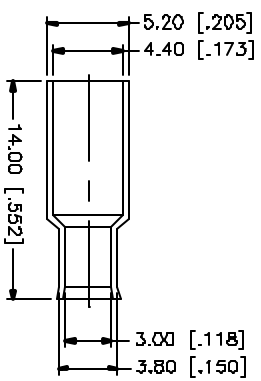
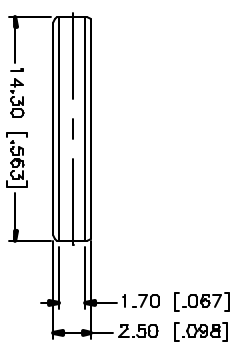
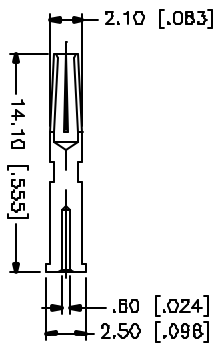
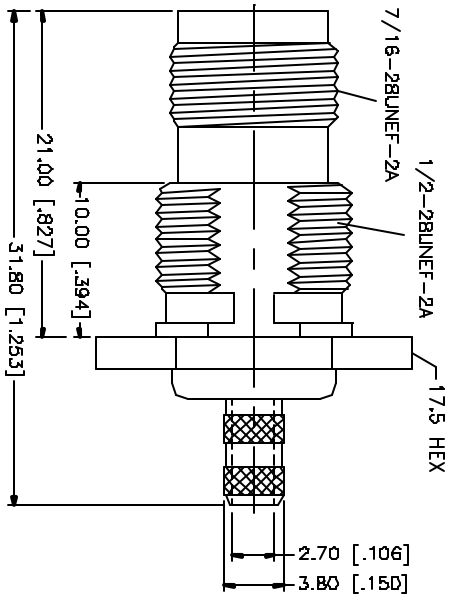
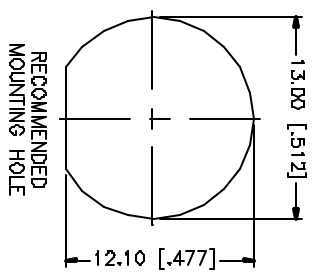
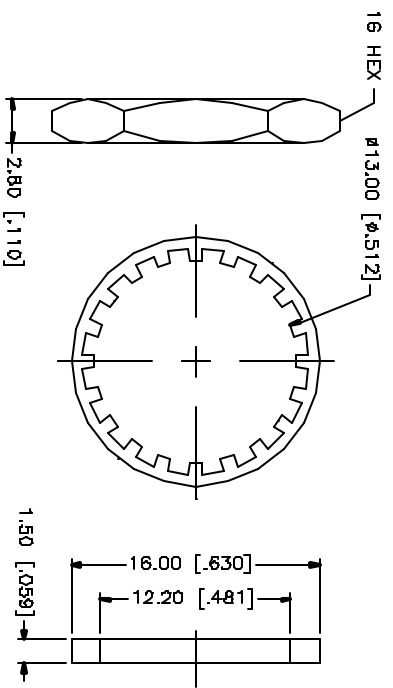
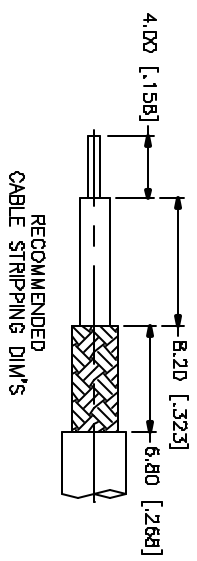


REV.	DATE	DESCRIPTION
A	05/01/04	UPDATE DRAWING FORMAT



DESCRIPTION	MATERIAL	FINISH	QTY	APPROVALS	DATE	PART DESCRIPTION	
B FERRULE	COPPER	NICKEL	1			<p>Amphenol Connex</p> <p>TNC BULKHEAD CRIMP JACK (FOR RG-174/U, 188A/U, 316/U)</p> <p>122428</p>	
7 SLEEVE	DELFIN	NATURAL	1				
6 CONTACT PIN	PHOS. BRONZE	GOLD	1				
5 HEX NUT	BRASS	NICKEL	1				
4 LOCK WASHER	BRASS	NICKEL	1				
3 GASKET	RUBBER	RED	1				
2 INSULATOR	TEFLON	NATURAL	1				
1 BODY	BRASS	NICKEL	1				

UNLESS OTHERWISE SPECIFIED, DIMENSIONS ARE IN INCHES AND FOR OTHERWISE SPECIFIED DIM., DIMENSIONS ARE IN MILLIMETERS FOR MILLIMETER DIMS.

UNLESS OTHERWISE SPECIFIED, TOLERANCES FOR MILLIMETER DIMS:
 0.5 - 0.9mm ± 0.20mm
 1.0 - 3.0mm ± 0.40mm
 3.0 - 12.0mm ± 0.50mm

UNLESS OTHERWISE SPECIFIED, TOLERANCES FOR INCHES ARE:
 .020 - .315 = ± 0.0007"
 .315 - 1.180 = ± 0.015"
 1.180 - 4.724 = ± 0.020"

DO NOT SCALE DRAWING

APPROVALS	DATE	DWG. NO.	REV.	SIZE	SCALE
G.R.S.	05/01/04	122428.DWG	A	A	NA
CAD FILE		C:/122/122428.DWG			

X-ON Electronics

Largest Supplier of Electrical and Electronic Components

Click to view similar products for [RF Connectors / Coaxial Connectors](#) category:

Click to view products by [Amphenol](#) manufacturer:

Other Similar products are found below :

[8915-1511-000](#) [89674-0827](#) [6001-7071-019](#) [6002-7051-003](#) [6002-7551-202](#) [6059674-1](#) [619550-1](#) [630059-000](#) [M39030/3-01N](#) [M3933/25-36N](#) [6500-7071-046](#) [6769](#) [CX050L2AQ](#) [7002-1542-011](#) [7004-1512-000](#) [7009-1511-004](#) [7010-1511-000](#) [7029-1511-060](#) [7101-1541-010](#) [7101-1571-002](#) [7105-1521-002](#) [7145-1521-002](#) [7203-1571-003](#) [7209-1511-011](#) [7210-1511-015](#) [7210-1511-019](#) [73137-5015](#) [73216-2241](#) [7325-1512-000](#) [73404-2300](#) [7405-1521-005](#) [7405-1521-802](#) [7406-1521-005](#) [8527](#) [8547](#) [FS11V](#) [8808-1511-001](#) [9049-9513-000](#) [9074-9513-000](#) [9101-9573-002](#) [910A205F](#) [9130-9573-002](#) [PL11SC-026](#) [PL375-33](#) [PL40-5](#) [PL71-9](#) [PL74C-221](#) [PL75MC-217](#) [PL803-7](#) [980-8666-005](#)