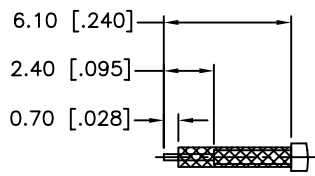
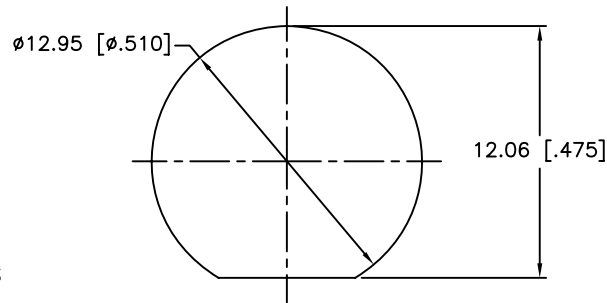


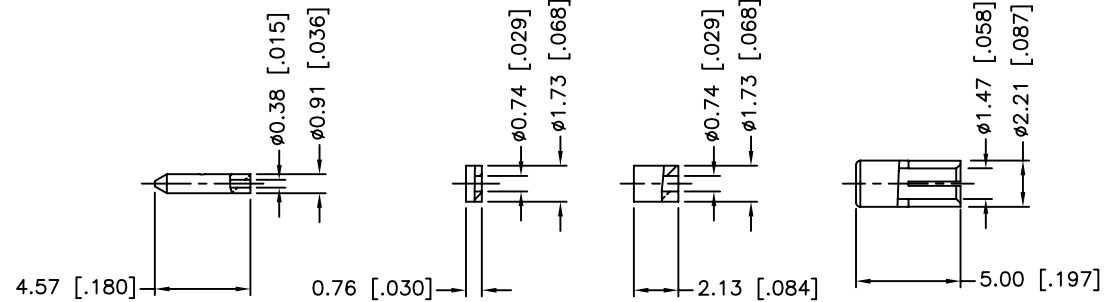
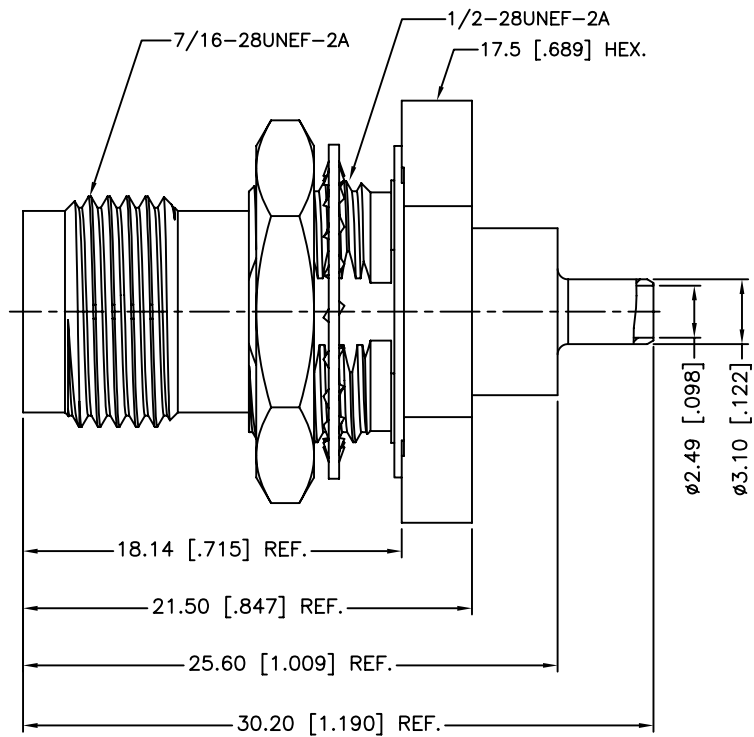
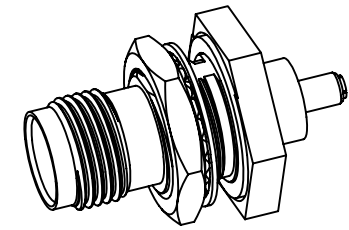
REV.	DATE	ECR NO.	DESCRIPTION
NC	11/04/09	XXXXXX	INITIAL RELEASE
A	11/08/11	2255	REPLACING ROUND FLANGES WITH HEX FLANGES
B	11/07/13	2551	ADD MAX PANEL THICKNESS, UPDATE DRAWING FORMAT



RECOMMENDED
CABLE STRIPPING DIM'S



RECOMMENDED
MOUNTING HOLE



1. IMPEDANCE: 50 OHM
2. FREQUENCY RANGE: 0-6 GHZ
3. VSWR: 1.3 MAX.
4. DIELECTRIC WITHSTANDING VOLTAGE: 200 VRMS, MIN.
5. DURABILITY: 500 CYCLES MIN.
6. TEMPERATURE RANGE: -65°C TO +165°C
7. CRIMPED FERRULE
HEX. CRIMP SIZE .100"
8. CRIMPED CONTACT PIN
USE 4-WAY INDENT CRIMP TOOL #47025
9. MAX. PANEL THICKNESS=3.5mm

QTY	DESCRIPTION	MATERIAL	FINISH	QTY
12	INNER FERRULE	BRASS	NICKEL	1
11	SLEEVE	BRASS	NICKEL	1
10	INSULATOR	PTFE	NATURAL	1
9	CONTACT PIN	BRASS	GOLD	1
8	HEX NUT	BRASS	NICKEL	1
7	O-RING	SILICONE	RED	1
6	LOCK WASHER	PHOSPHOR BRONZE	NICKEL	1
5	CONTACT PIN	PHOSPHOR BRONZE	GOLD	1
4	GASKET	SILICONE	RED	1
3	BODY	BRASS	NICKEL	1
2	INSULATOR	PTFE	NATURAL	1
1	BARREL	BRASS	NICKEL	1

UNLESS OTHERWISE SPECIFIED DIMENSIONS ARE IN MILLIMETERS. DIMENSIONS IN [] ARE IN INCHES AND FOR CUSTOMER REFERENCE ONLY.
UNLESS OTHERWISE SPECIFIED
TOLERANCES FOR MILLIMETERS ARE:
<math>< .05 \pm 0.05\text{mm}</math>
$0.5 - 6\text{mm} \pm 0.10\text{mm}$
$6 - 30\text{mm} \pm 0.20\text{mm}$
$30 - 120\text{mm} \pm 0.30\text{mm}$
ANGLES $\pm 1^\circ$
UNLESS OTHERWISE SPECIFIED
TOLERANCES FOR INCHES ARE:
<math>< .020 \pm 0.002''</math>
$.020 - .236 \pm 0.004''$
$.236 - 1.180 \pm 0.007''$
$1.180 - 4.724 \pm 0.012''$
ANGLES $\pm 1^\circ$
DO NOT SCALE DRAWING

APPROVALS	DATE
DRAWN M.ZHANG	11/07/13
CHECKED	
ISSUED	
SHEET 1 OF 1	
CAD FILE C:/CONNEX/122529-10.DWG	

Amphenol Connex

PART DESCRIPTION
**TNC BULKHEAD JACK, IP-67 COMPLIANT
(FOR 1.32 MM CABLE)**

PART NO. **122529-10**

DWG. NO. 122529-10.DWG	REV. B	SIZE A	SCALE NA
------------------------	--------	--------	----------

X-ON Electronics

Largest Supplier of Electrical and Electronic Components

Click to view similar products for [RF Connectors / Coaxial Connectors](#) category:

Click to view products by [Amphenol](#) manufacturer:

Other Similar products are found below :

[8915-1511-000](#) [89674-0827](#) [6001-7071-019](#) [6002-7051-003](#) [6002-7551-202](#) [6059674-1](#) [619550-1](#) [630059-000](#) [M39030/3-01N](#) [M3933/25-36N](#) [6500-7071-046](#) [6769](#) [CX050L2AQ](#) [7002-1542-011](#) [7004-1512-000](#) [7009-1511-004](#) [7010-1511-000](#) [7029-1511-060](#) [7101-1541-010](#) [7101-1571-002](#) [7105-1521-002](#) [7145-1521-002](#) [7203-1571-003](#) [7209-1511-011](#) [7210-1511-015](#) [7210-1511-019](#) [73137-5015](#) [73216-2241](#) [7325-1512-000](#) [73404-2300](#) [7405-1521-005](#) [7405-1521-802](#) [7406-1521-005](#) [8527](#) [8547](#) [FS11V](#) [8808-1511-001](#) [9049-9513-000](#) [9074-9513-000](#) [9101-9573-002](#) [910A205F](#) [9130-9573-002](#) [PL11SC-026](#) [PL375-33](#) [PL40-5](#) [PL71-9](#) [PL74C-221](#) [PL75MC-217](#) [PL803-7](#) [980-8666-005](#)