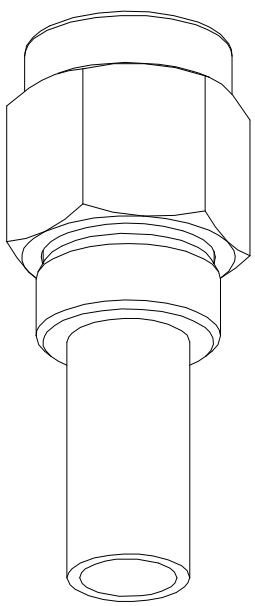
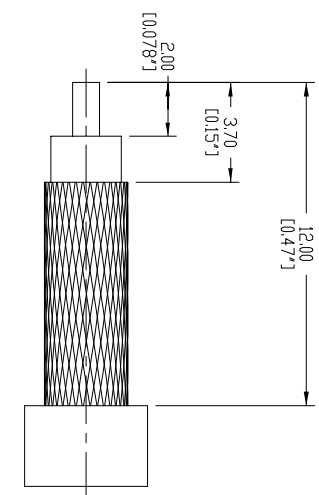


NOTES:
 1. CRIMPED FERRULE HEX CRIMP SIZE 0.213"
 2. CONTACT PIN TO SOLDER
 3. CONTACT RETENTION: 6 LBS.MINIMUM AXIAL FORCE (CAPTIVATED CONTACTS)

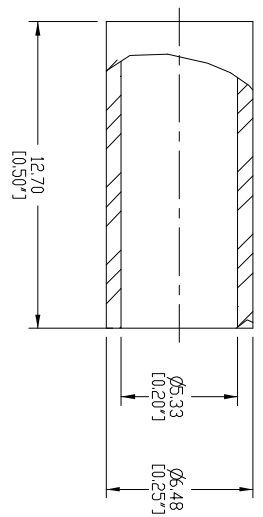
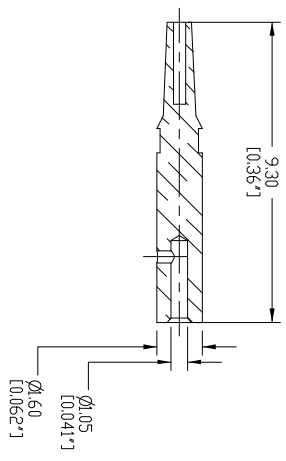
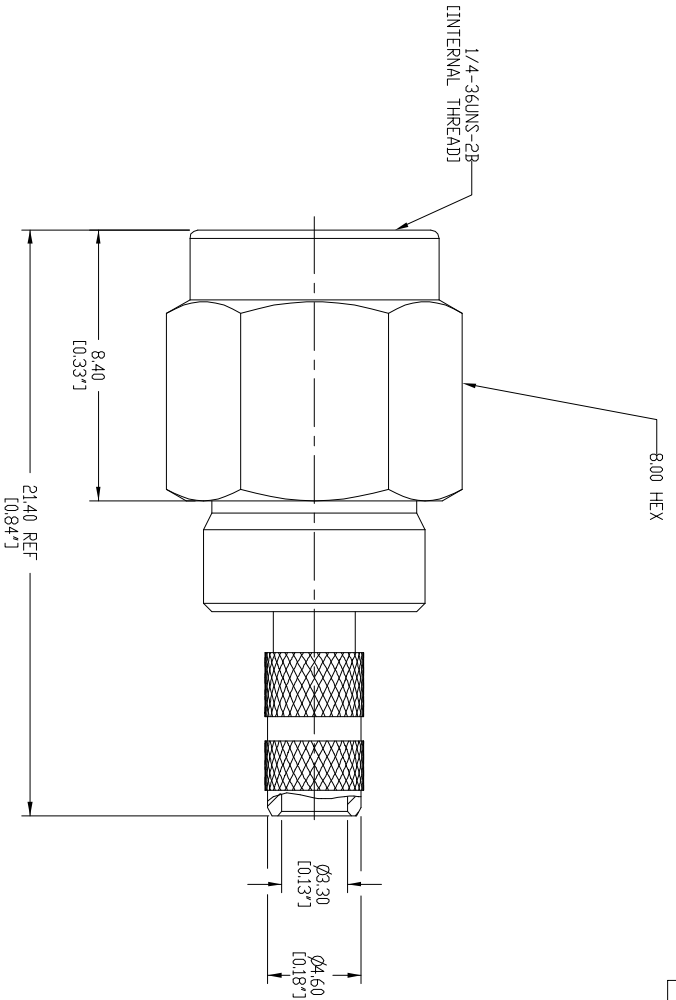
132113RP-10	DRAWING NO.	REV	DESCRIPTION	DATE	ECD	APPR
THIRD ANGLE PROJ		A	RELEASE TO MFG.	24-Mar-11	--	HR

REVISIONS



RECOMMENDED
 CABLE STRIPPING DIM'S

SCALE 5.000



GASKET	SILICONE	RED
FERRULE	COPPER	GOLD
COUPLING NUT	BRASS	GOLD
CONTACT PIN	BER.COPPER	GOLD
INSULATOR	TEFLON	NATURAL
BDDY	BRASS	GOLD
DESCRIPTION	MATERIAL	FINISH

UNLESS OTHERWISE SPECIFIED, DIMENSIONS ARE IN INCHES AND TOLERANCES ARE:
 2 PLACE DECIMAL 3 PLACE DECIMAL ANGLES
 ±0.015 (0.381 mm) ±.005 (0.127 mm) ± 1°

NOTICE - These drawings, specifications, or other data (1) are, and remain the property of Amphenol Corp. (2) must be returned upon request and (3) are confidential and not to be disclosed to any person other than those to whom they are given by Amphenol Corp. The use of these drawings, specifications, or other data is prohibited in any manner, including manufacturing, or otherwise, without the written consent of Amphenol Corp. The use of these drawings, specifications, or other data is not to be regarded by implication or otherwise as a recommendation, or as a warranty, or as a representation, or as a contract, or as a license, or as a grant of any rights or permitting such holder or any other person to manufacture, use or sell any product, process or design, patented or otherwise, that may in any way be related to or disclosed by said drawings, specifications, or other data.

MATERIAL	REFERENCE
	TASK# 589

DRAWN	DATE	TITLE
HARI R	28-Mar-11	SMA REVERSE PLDARITY
ENGINEER	DATE	CRIMP PLUG
HARI R	28-Mar-11	(FOR RG-58, 141,LMR195)
APPROVED	DATE	
CAD FILE		

DWG SIZE	DRAWING NO.	SCALE:	SHEET	1 OF 1
B	132113RP-10	201		
Amphenol Connex				
				REV A

X-ON Electronics

Largest Supplier of Electrical and Electronic Components

Click to view similar products for [RF Connectors / Coaxial Connectors](#) category:

Click to view products by [Amphenol](#) manufacturer:

Other Similar products are found below :

[8915-1511-000](#) [89674-0827](#) [6001-7071-019](#) [6002-7051-003](#) [6002-7551-202](#) [6059674-1](#) [619550-1](#) [630059-000](#) [M39030/3-01N](#) [M3933/25-36N](#) [6500-7071-046](#) [6769](#) [CX050L2AQ](#) [7002-1542-011](#) [7004-1512-000](#) [7009-1511-004](#) [7010-1511-000](#) [7029-1511-060](#) [7101-1541-010](#) [7101-1571-002](#) [7105-1521-002](#) [7145-1521-002](#) [7203-1571-003](#) [7209-1511-011](#) [7210-1511-015](#) [7210-1511-019](#) [73137-5015](#) [73216-2241](#) [7325-1512-000](#) [73404-2300](#) [7405-1521-005](#) [7405-1521-802](#) [7406-1521-005](#) [8527](#) [8547](#) [FS11V](#) [8808-1511-001](#) [9049-9513-000](#) [9074-9513-000](#) [9101-9573-002](#) [910A205F](#) [9130-9573-002](#) [PL11SC-026](#) [PL375-33](#) [PL40-5](#) [PL71-9](#) [PL74C-221](#) [PL75MC-217](#) [PL803-7](#) [980-8666-005](#)