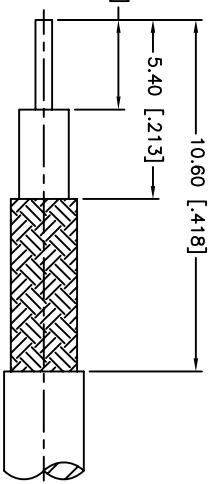
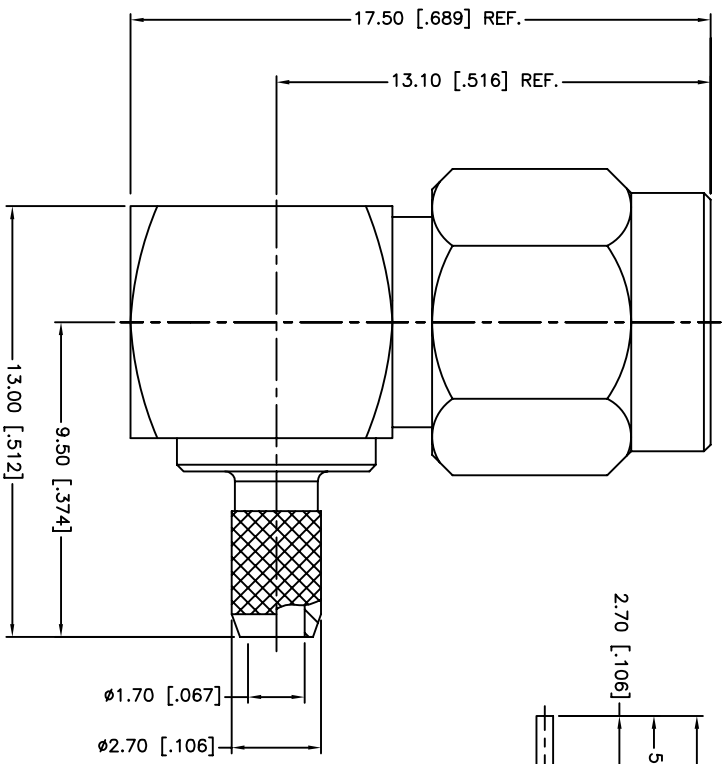
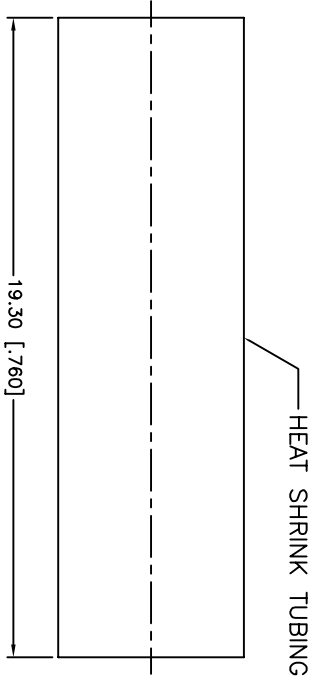
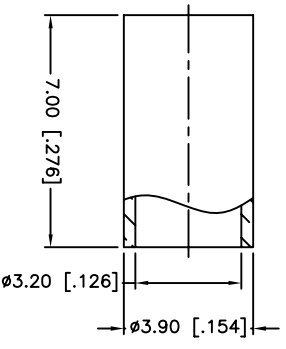


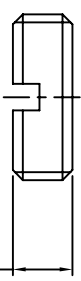
REV.	DATE	ECR NO.	DESCRIPTION
NC	04/17/00	-	INITIAL RELEASE
A	07/21/05	-	UPDATE DRAWING FORMAT
B	04/28/08	-	REVISE BARREL O.D. TO 2.69 mm, FERRULE I.D. TO 3.2 mm
C	02/25/10	2027	THE FERRULE LENGTH WAS CHANGED TO 7 FROM 9.5.



RECOMMENDED
CABLE STRIPPING DIM'S



HEAT SHRINK TUBING



1.80 [.071]

- NOTES:
1. CRIMPED FERRULE
HEX CRIMP SIZE .128"
 2. CONTACT PIN TO SOLDER

QTY	DESCRIPTION	MATERIAL	FINISH	QTY	DO NOT SCALE DRAWING
1	HEAT SHRINK TUBING	BRASS	BLACK	1	
1	FERRULE	BRASS	GOLD	1	
1	COVER	BRASS	GOLD	1	
1	GASKET	SILICONE	RED	1	
1	RETAINER RING	SUS 304	NATURAL	1	
1	CONTACT PIN	BERYLLIUM COPPER	GOLD	1	
1	INSULATOR	PTFE	NATURAL	1	
1	HOUSING WITH BARREL	BRASS	GOLD	1	
1	SHELL	BRASS	GOLD	1	
	DESCRIPTION	MATERIAL	FINISH	QTY	

APPROVALS	DATE
C.WANG	02/25/10

CAD FILE	DWG. NO.	REV.	SIZE	SCALE
C:/CONNEX/132123RP.DWG	132123RP.DWG	C	A	NA

PART DESCRIPTION	PART NO.
SMA REVERSE POLARITY R/A CRIMP PLUG (FOR RG-174/U,188A/U,316/U)	132123RP

UNLESS OTHERWISE SPECIFIED, DIMENSIONS ARE IN INCHES AND FOR CUSTOMER REFERENCE ONLY.
UNLESS OTHERWISE SPECIFIED, TOLERANCES FOR MILLIMETERS ARE:
0.5 - 8mm ± 0.20mm
8 - 30mm ± 0.40mm
30 - 120mm ± 0.50mm
UNLESS OTHERWISE SPECIFIED, TOLERANCES FOR INCHES ARE:
.020 - .315 = ± 0.007"
.315 - 1.180 = ± 0.015"
1.180 - 4.724 = ± 0.020"

X-ON Electronics

Largest Supplier of Electrical and Electronic Components

Click to view similar products for [RF Connectors / Coaxial Connectors](#) category:

Click to view products by [Amphenol](#) manufacturer:

Other Similar products are found below :

[8915-1511-000](#) [89674-0827](#) [6001-7071-019](#) [6002-7051-003](#) [6002-7551-202](#) [6059674-1](#) [619550-1](#) [630059-000](#) [M39030/3-01N](#) [M3933/25-36N](#) [6500-7071-046](#) [6769](#) [CX050L2AQ](#) [7002-1542-011](#) [7004-1512-000](#) [7009-1511-004](#) [7010-1511-000](#) [7029-1511-060](#) [7101-1541-010](#) [7101-1571-002](#) [7105-1521-002](#) [7145-1521-002](#) [7203-1571-003](#) [7209-1511-011](#) [7210-1511-015](#) [7210-1511-019](#) [73137-5015](#) [73216-2241](#) [7325-1512-000](#) [73404-2300](#) [7405-1521-005](#) [7405-1521-802](#) [7406-1521-005](#) [8527](#) [8547](#) [FS11V](#) [8808-1511-001](#) [9049-9513-000](#) [9074-9513-000](#) [9101-9573-002](#) [910A205F](#) [9130-9573-002](#) [PL11SC-026](#) [PL375-33](#) [PL40-5](#) [PL71-9](#) [PL74C-221](#) [PL75MC-217](#) [PL803-7](#) [980-8666-005](#)