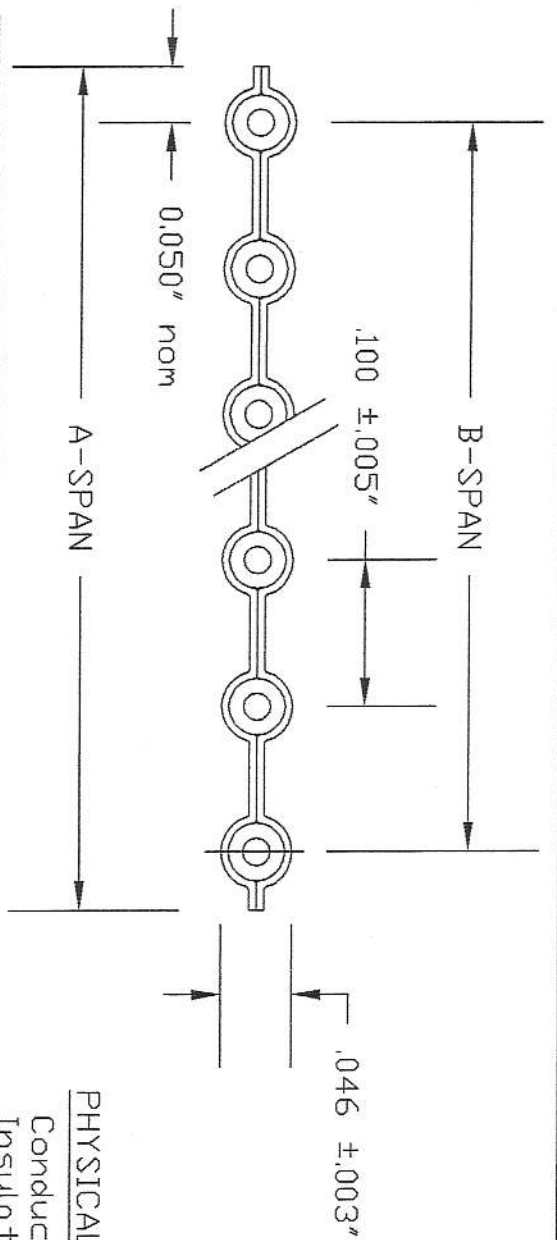


PRELIMINARY



Part Number	Count	A-Span, Nominal Inches (mm)	B-Span Inches (mm)
135-2607-304	4	0.40 10,16	0.300 ±.015 7,62 ±.38
135-2607-306	6	0.60 15,24	0.500 ±.015 12,70 ±.38
135-2607-307	7	0.70 17,78	0.600 ±.015 15,24 ±.38
135-2607-308	8	0.80 20,32	0.700 ±.015 17,78 ±.38
135-2607-310	10	1.00 25,40	0.900 ±.015 22,86 ±.38
135-2607-312	12	1.20 30,48	1.100 ±.015 27,94 ±.38
135-2607-314	14	1.40 35,56	1.300 ±.015 33,02 ±.38
135-2607-316	16	1.60 40,64	1.500 ±.015 38,10 ±.38
135-2607-318	18	1.80 45,72	1.700 ±.015 43,18 ±.38
135-2607-320	20	2.00 50,80	1.900 ±.020 48,26 ±.51
135-2607-324	24	2.40 60,96	2.300 ±.020 58,42 ±.51

PHYSICAL

Conductors: 26 awg 7/34 Tinned Copper
 Insulation: .010" PVC
 Color Code: Brn,Red,Drq,Yel,Grn,Blu,Vio,Gry, Wht,Blk, and repeat.
 Laminate: (2) .005" Clr PVC
 Temperature: 105° C

ELECTRICAL

Impedance: 140 Ohms
 Capacitance: 10 pF/ft @ 1MHz
 Prop Delay: 1.4 ns/ft
 Current Rating: 1.7 A
 Insulation Res: 10¹⁰ Ohms - 10 ft minimum
 Voltage: 300 V

APPROVALS

UL Style 20130

ORIGINAL

ISS.	DATE	CMTE	SIG.
B	20/08/07	EDDN 1446	JAC
A	20/08/07	ORIGINAL	JAC

Q. NO.	AMPHENDL LTD.	DIMENSIONS ARE IN	MM
CUSTOMER	ROMSEY INIL EST, GREATBRIDGE RD, ROMSEY, HANTS, SO51 0HK	DRAWN	CHECKED
CUSTOMER REF.	LIMITS UNLESS OTHERWISE STATED: .XXX ± ANGLES ±	JAC	RWS
	FOR EXPLANATION OF DIMENSIONS TOLERANCES, NOTES ETC. SEE BS308.	AS SPECIFICATION	
	TITLE: 3-C Colour Coded Cable 0.100" Pitch 26-7 awg	FINISH LAMINATED	
		DRAWING NO.	SHEET
		135-2607-3XX	1 OF 1

09 081 2007

X-ON Electronics

Largest Supplier of Electrical and Electronic Components

Click to view similar products for [I/O Connectors](#) category:

Click to view products by [Amphenol](#) manufacturer:

Other Similar products are found below :

[571763P](#) [58098-0628](#) [61-168618-12P](#) [D38999/20FJ24PA L/C](#) [D38999/20FJ29SB L/C](#) [D38999/24FG11SN L/C](#) [72.250.1628.2](#) [72.250.2428.2](#)
[74720-0505](#) [747680210](#) [76.350.0729.0](#) [76871-1403](#) [FCN-244F080-G/1](#) [FCN-260A9920](#) [FCN-268D024-G/2F#10X-R10](#) [MP-5T180MUNNA-005](#) [MP-5XRJ45UNNB-003](#) [PCS-E50FA](#) [PCS-XE26LKA](#) [PCS-XE26MA+](#) [PCS-XES68MS+](#) [G38A71314B](#) [91-569719-35R](#) [9776-18-6](#)
[DX40-50P\(55\)](#) [1571250010](#) [157-22500-3](#) [MS3471L14-19P L/C](#) [MS3476W12-10S L/C](#) [171224-6031](#) [1888020-8](#) [91-569786-35H](#) [91-569786-35M](#) [91-644626-35P](#) [172501-4002](#) [172501-6002](#) [FCN-260C008-A/L0](#) [FCN-260C024-AL0](#) [FCN-261Z008](#) [FCN-268D008-G/1K](#) [2000314-1](#)
[200331-1](#) [2007498-2](#) [PCR-E28LMDAG1+](#) [PCR-E36FC+](#) [PCS-E28FS+](#) [PCS-XE26SLFD+](#) [PCS-XE26SLFDT+](#) [G38A71214B](#) [HDRA-E68W1LFDTC-SL+](#)