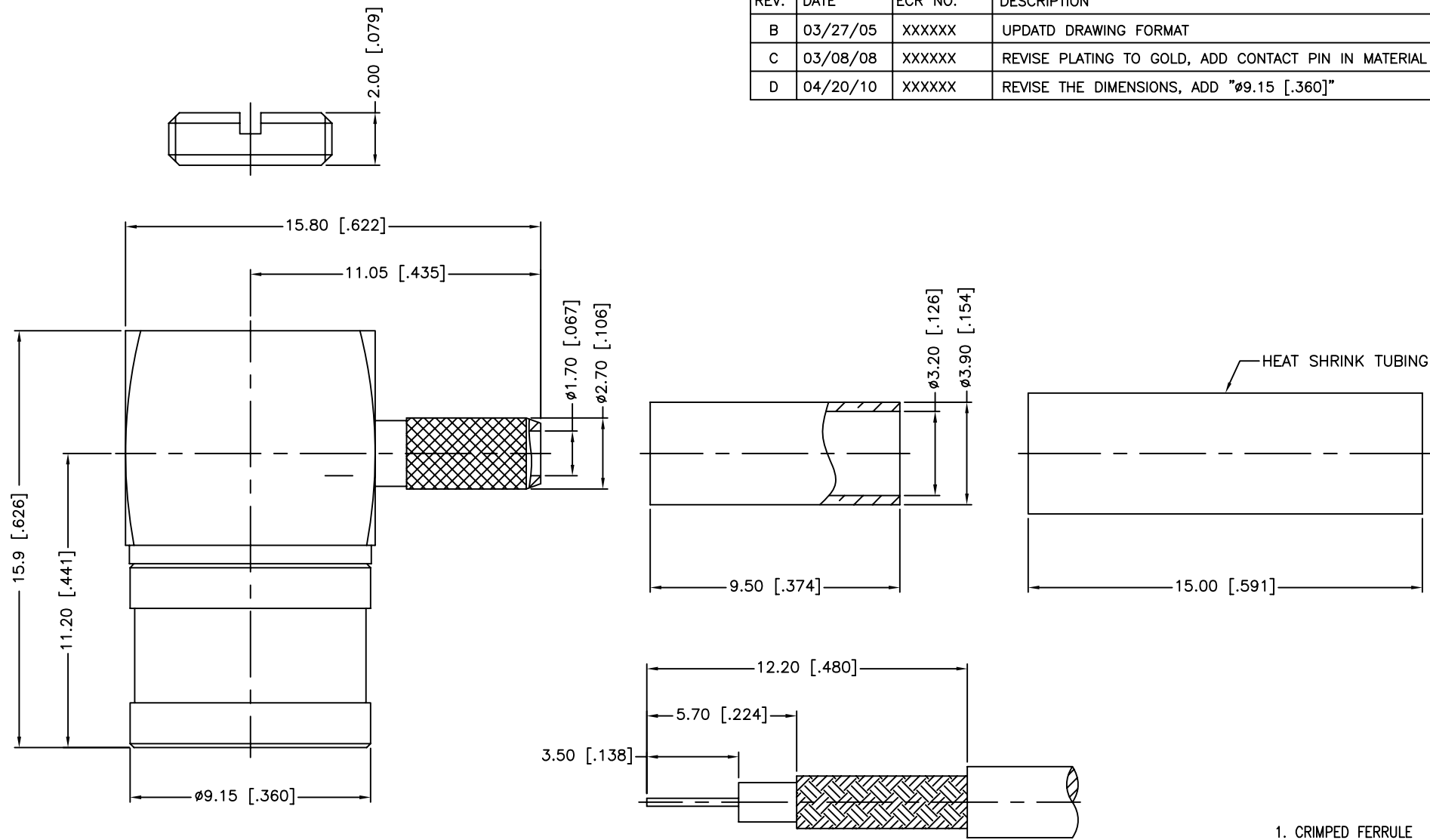


REV.	DATE	ECR NO.	DESCRIPTION
B	03/27/05	XXXXXX	UPDATD DRAWING FORMAT
C	03/08/08	XXXXXX	REVISE PLATING TO GOLD, ADD CONTACT PIN IN MATERIAL CALLOUT
D	04/20/10	XXXXXX	REVISE THE DIMENSIONS, ADD "ø9.15 [.360]"



RECOMMENDED  
CABLE STRIPPING DIM'S

1. CRIMPED FERRULE  
HEX CRIMP SIZE .128"
2. CONTACT PIN TO SOLDER

DESCRIPTION	MATERIAL	FINISH	QTY	DO NOT SCALE DRAWING	APPROVALS	DATE	PART DESCRIPTION						
9	HEAT SHRINK TUBING	BLACK	1	<small>UNLESS OTHERWISE SPECIFIED DIMENSIONS ARE IN MILLIMETERS. DIMENSIONS IN [ ] ARE IN INCHES AND FOR CUSTOMER REFERENCE ONLY.</small>  <small>UNLESS OTHERWISE SPECIFIED TOLERANCES FOR MILLIMETERS ARE: 0.5 - 8mm ± 0.20mm 8 - 30mm ± 0.40mm 30 - 120mm ± 0.50mm</small>  <small>UNLESS OTHERWISE SPECIFIED TOLERANCES FOR INCHES ARE: .020 - .315 ± 0.007" .315 - 1.180 ± 0.015" 1.180 - 4.724 ± 0.020"</small>	M.ZHANG	04/20/10	<h1 style="color: blue; margin: 0;">Amphenol Connex</h1> <p style="text-align: center; margin: 0;">SMB R/A CRIMP PLUG (FOR RG-179/U, 187A/U - 75 OHM)</p>						
8	FERRULE	BRASS	GOLD		1	CHECKED					PART NO.		
7	NUT	BRASS	GOLD		1	ISSUED					142115		
6	RETAINER RING	BURYLLIUM COPPER	NATURAL		1	SHEET	1 OF 1	DWG. NO. 142115.DWG					
5	CONTACT PIN	BURYLLIUM COPPER	GOLD		1			REV.	SIZE	SCALE			
4	INSULATOR	PTFE	NATURAL		1			D	A	NA			
3	BARREL	BRASS	GOLD		1								
2	BODY	BRASS	GOLD		1								
1	SHELL	BRASS	GOLD		1								
					CAD FILE								
					C:/CONNEX/142115.DWG								

## X-ON Electronics

Largest Supplier of Electrical and Electronic Components

*Click to view similar products for [RF Connectors / Coaxial Connectors](#) category:*

*Click to view products by [Amphenol](#) manufacturer:*

Other Similar products are found below :

[8915-1511-000](#) [89674-0827](#) [6001-7071-019](#) [6002-7051-003](#) [6002-7551-202](#) [6059674-1](#) [619550-1](#) [630059-000](#) [M39030/3-01N](#) [6500-7071-046](#) [6769](#) [CX050L2AQ](#) [7002-1542-011](#) [7004-1512-000](#) [7009-1511-004](#) [7010-1511-000](#) [7029-1511-060](#) [7101-1541-010](#) [7101-1571-002](#) [7105-1521-002](#) [7145-1521-002](#) [7203-1571-003](#) [7209-1511-011](#) [7210-1511-015](#) [7210-1511-019](#) [73137-5015](#) [73216-2241](#) [7325-1512-000](#) [73404-2300](#) [7405-1521-005](#) [7405-1521-802](#) [7406-1521-005](#) [8527](#) [8547](#) [FS11V](#) [8808-1511-001](#) [9049-9513-000](#) [9074-9513-000](#) [9101-9573-002](#) [910A205F](#) [9130-9573-002](#) [PL11SC-026](#) [PL375-33](#) [PL40-5](#) [PL71-9](#) [PL74C-221](#) [PL75MC-217](#) [PL803-7](#) [980-8666-005](#) [1200690078](#)