

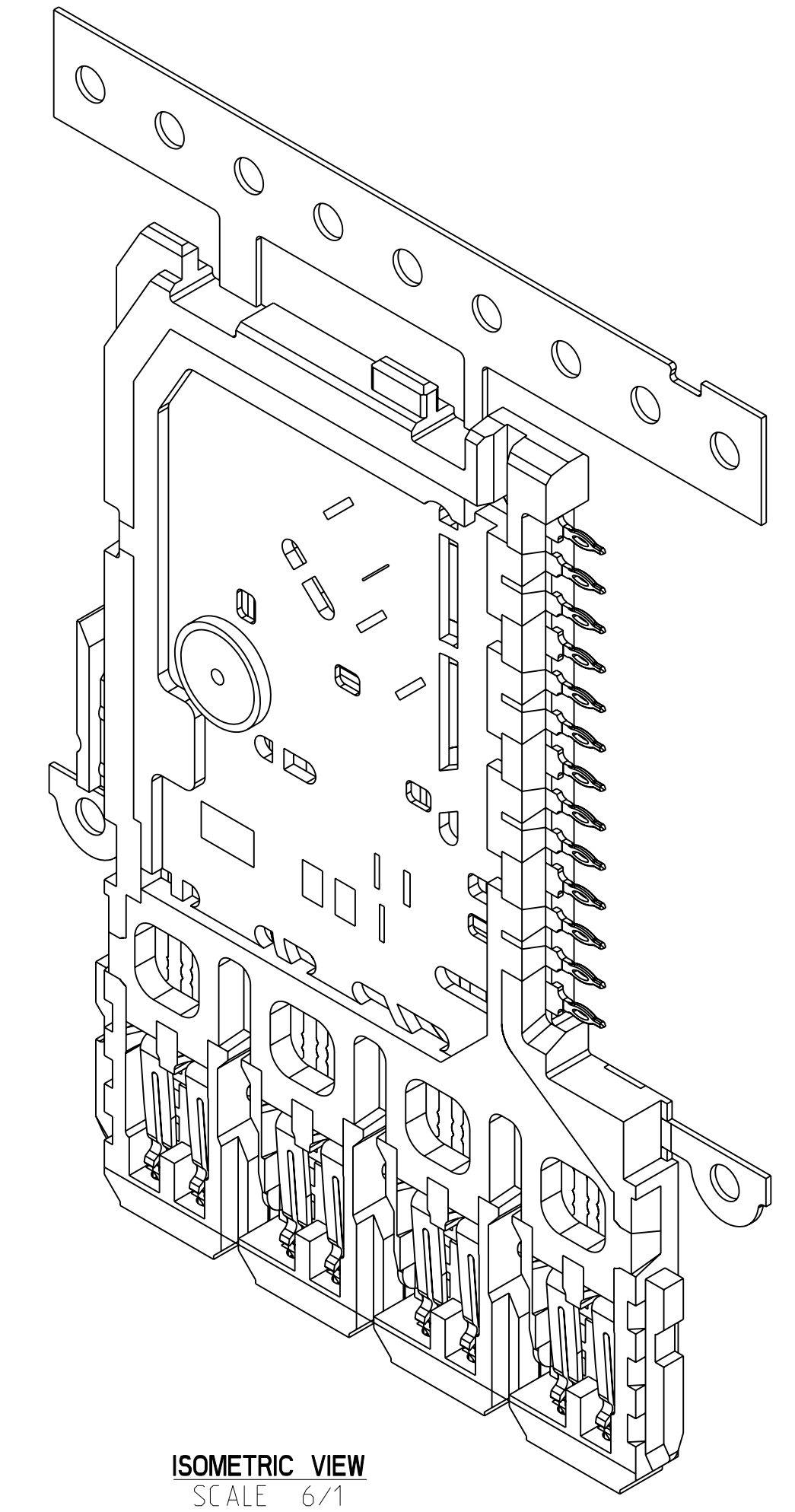
ZONE	REV	SCR NUMBER	DESCRIPTION	BY	DATE	APPROVED
ALL	A	DSMH-8X6RDF.VER01	NEW RELEASE	HCL-AS	08/16/2012	D.SMITH
	B	BRID-93SUS6.VER01	TABLE 1 ADDED FOR WITH STSG OPTION REMOVED LEADED PLATING OPTIONS	HCL-AP	01/11/2013	B.RICHARD
	C	JXUU-98N7HA.VER01	ADDED CORING	HCL-AK	07/02/2013	J.XU

TABLE 1
COMPLIANT PIN, 0.0177" DRILL, 100 Ω WITH STSG, WITHOUT CAPS

PART NUMBER	REV	MAKE FROM			FINISH (2)	DESCRIPTION
		SIGNAL LF B1	SIGNAL LF B2	SHIELD IM-B		
154-4412-10D	C	160-0919-769	160-0929-769	154-4312-10D	769 PER EGS 205	PREPPED
154-4412-10E	C	160-0919-768	160-0929-768	154-4312-10E	768 PER EGS 205	
154-4412-10H	C	160-0919-806	160-0929-806	154-4312-10H	806 PER EGS 205	
154-4412-10J	C	160-0919-805	160-0929-805	154-4312-10J	805 PER EGS 205	
154-4512-10X	C	154-4412-10X			(2)	OVER MOLD
154-4612-10X	C	154-4512-10X			(2)	LOOSE PIECE

TABLE 2
COMPLIANT PIN, 0.0177" DRILL, 100 Ω WITHOUT STSG, WITHOUT CAPS

PART NUMBER	REV	MAKE FROM			FINISH (2)	DESCRIPTION
		SIGNAL LF B1	SIGNAL LF B2	SHIELD IM-B		
154-4422-10D	C	160-0919-769	160-0929-769	154-4322-10D	769 PER EGS 205	PREPPED
154-4422-10E	C	160-0919-768	160-0929-768	154-4322-10E	768 PER EGS 205	
154-4422-10H	C	160-0919-806	160-0929-806	154-4322-10H	806 PER EGS 205	
154-4422-10J	C	160-0919-805	160-0929-805	154-4322-10J	805 PER EGS 205	
154-4522-10X	C	154-4422-10X			(2)	OVER MOLD
154-4622-10X	C	154-4522-10X			(2)	LOOSE PIECE



NOTES:

- (1) MATERIAL: 807-0000-070 PER EGS 207.
- (2) 0.2 MAX FLASH UNLESS OTHERWISE SPECIFIED.
3. PARTS ARE TO BE IN ACCORDANCE WITH EGPS 0201.
- (4) PARTS TO BE SUPPLIED ON REELS ON 26.00 CENTERS AS SHOWN.
5. SOME DIMENSIONS TO BE CONTROLLED BY SPC. SPC DATA WILL BE SUBMITTED WITH EVERY LOT. SEE SHEET 6 FOR FPIR.
6. MANUFACTURER SHALL NOTIFY AMPHENOL TCS IN WRITING 30 DAYS PRIOR TO CHANGES IN MANUFACTURING LOCATION, MATERIALS, DESIGN, OR MANUFACTURING PROCESS. WRITTEN ACCEPTANCE MUST BE RECEIVED PRIOR TO IMPLEMENTATION OF CHANGE. THIS DOES NOT REQUIRE THE MANUFACTURER TO REVEAL ANY PROPRIETARY INFORMATION.
7. FINISHED MOLDED PART SHALL RETAIN ALL TOLERANCE REQUIREMENTS OF STAMPED PART (160-0919-XXX, 160-0929-XXX) AS SPECIFIED ON DRAWING 160-0919-500 & 160-0929-500 AND INSERT MOLDED PART (154-4322-XXX) AS SPECIFIED ON DRAWING 154-4322-500.
8. CHANGES IN THIS DRAWING MAY AFFECT PART NUMBER (160-0919-XXX, 160-0929-XXX), REFERENCE DRAWING 160-0919-500 & 160-0929-500, AND PART NUMBER 154-4322-XXX, REFERENCE DRAWING 154-4322-500.
- (9) SEE FLASH MAP FOR CRITICAL FLASH AREAS & REQUIREMENTS.
10. METALLIC SLIVERS OR SPECKS ON FINISHED PRODUCT OR MOLDED IN PLASTIC ARE NOT ACCEPTABLE.
- (11) GATE LOCATION APPROXIMATELY WHERE SHOWN. 1 GATE PER PART. GATE TO BE RECESSED SUFFICIENTLY SO VESTIGE WILL NOT EXCEED TOP SURFACE.
- (12) CAVITY I.D. RECESS AREA TO BE LOCATED APPROXIMATELY WHERE SHOWN. CHARACTERS TO BE 0.80 TALL.
13. MAX ALLOWABLE SINK 0.15 MAX.
14. PART TO BE FREE OF BURRS IN EXCESS OF 0.05 MAX. UNLESS OTHERWISE SPECIFIED.
15. CRITICAL AREA BURRS NOT TO EXCEED 0.025 MAX.
16. PLATING TO BE IN ACCORDANCE WITH QAPS 0425.
17. STAMPING TO BE IN ACCORDANCE WITH QAPS 0427.
18. REEL NOT TO EXCEED 35 LBS.
19. SHARP CORNERS TO BE R0.15mm UNLESS OTHERWISE SPECIFIED.
- (20) LOCATE PROFILE OF SURFACE (∩) WITH FIXTURE PART NUMBER 693-1181-000.
21. ALL DIMS NOT SHOWN SHALL BE ACCORDING TO SOLID MODEL P1199-4P-DC-WAFER-B-OVERMOLD.
- (22) LAST DIGIT OF PART NUMBER IDENTIFIES PLATING CODE. PER EGS 205.
D = 769
E = 768
H = 806
J = 805

TOLERANCES	DESIGN	10/02/2010 M.RECEPUTO	Amphenol TCS A Division of Amphenol Corporation 200 Innovative Way, Nashua, NH 03062 603.878.3000	TITLE	DC WAFER, OVERMOLDED, B & PAIR, GbX TW W/O CAPS, .0177" DRILL
0.0	±0.15	DRAWN 02/28/2011 HCL-MR		PART NO.	SEE TABLE 1 & 2
0.00	±0.05	CHK 02/28/2011 T.COHEN		DRAWING NO.	P-154-4522-500
0.000	± -	APVD 02/28/2011 T.COHEN		ASSEM: P1199-4P-DC-WAFER-B-OVERMOLD	1.19
ANGLES	± 1°		DRAWING: P-154-4522-500	C.O	
UNLESS OTHERWISE SPECIFIED DIMENSIONS ARE IN MM, DECIMAL MARKER IS A PERIOD. THESE DRAWINGS AND SPECIFICATIONS ARE THE PROPERTY OF AMPHENOL CORPORATION AND SHALL NOT BE REPRODUCED OR COPIED OR USED AS THE BASIS FOR THE MANUFACTURE OR SALE OF APPARATUS WITHOUT THE WRITTEN PERMISSION OF AMPHENOL CORPORATION.			SIZE	D	
MATERIAL: (1) (Symbol) INTERPRET PER ASME Y14.5M CODE IDENT 31413			SCALE	6/1	
			SHEET	1 OF 6	

DRW NO. P-154-4522-500

SH 1 REV C

8

7

6

5

4

3

DRW NO. P-154-4522-500	SH 2	REV C
---------------------------	---------	----------

ZONE	REV	SCR NUMBER	DESCRIPTION	BY	DATE	APPROVED
			SEE SHEET 1			

D

C

B

A

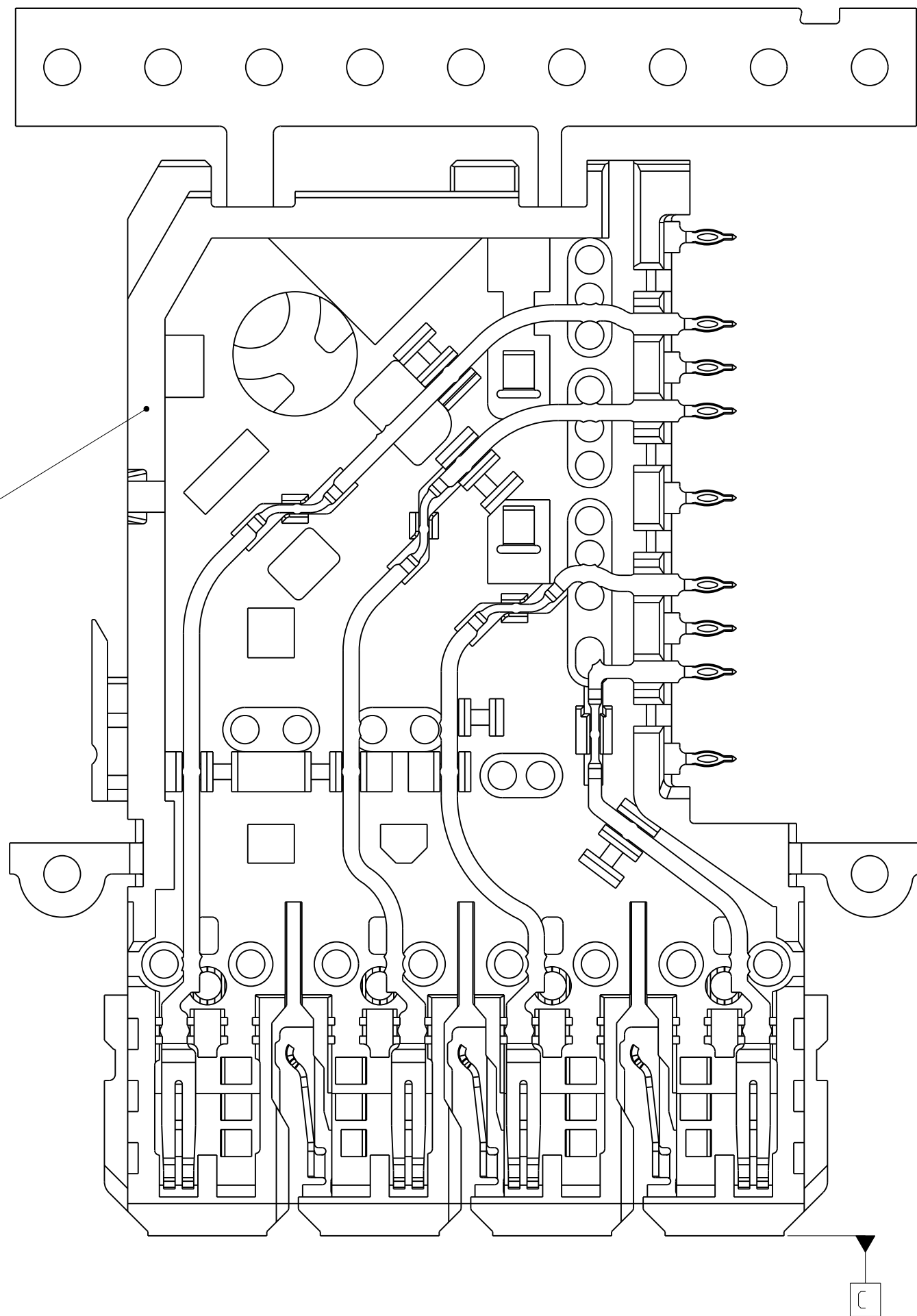
D

C

B

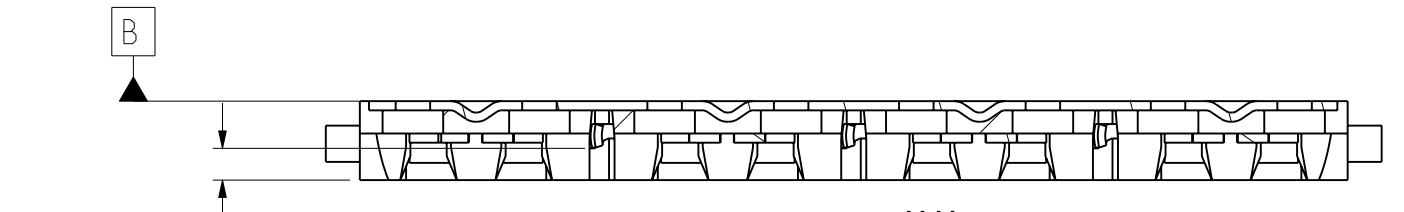
A

154-4322-XXX



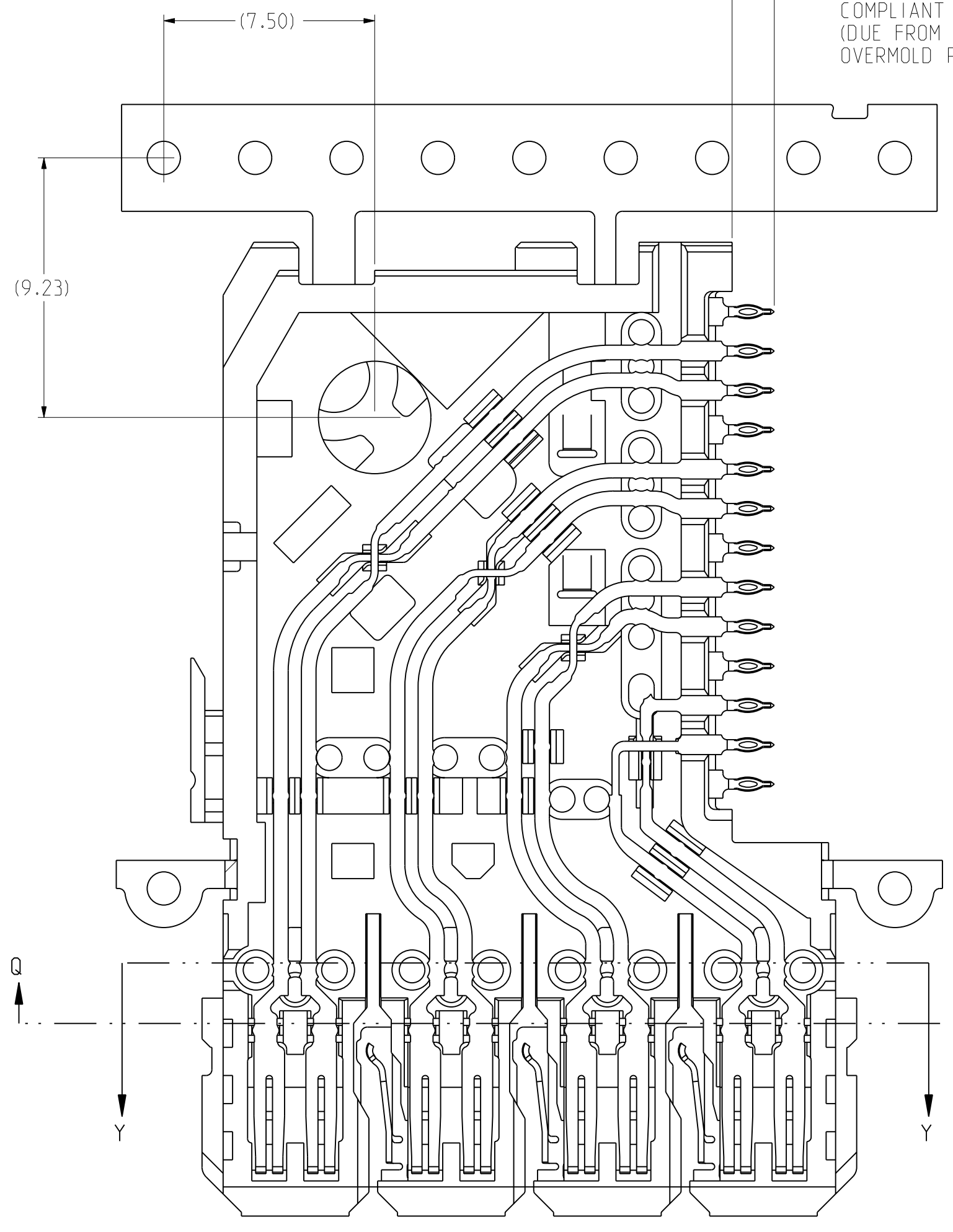
PRE-PREP STATION WAFER
LEADFRAME PN 160-0919-XXX

15 3X 0.70±0.10



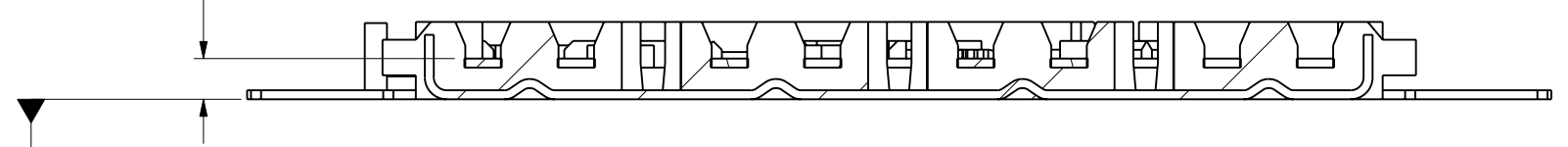
SECTION Y-Y

16 13X 1.50
MAX ALLOWABLE
COMPLIANT PIN SHEET
(DUE FROM PREP AND
OVERMOLD PROCESSES)



PRE-PREP STATION WAFER
LEADFRAME PN'S 160-0919-XXX & 160-0929-XXX

8X (0.92)
FEATURES TO BE SEATED
FLUSH AGAINST PLASTIC



SECTION Q-Q

TOLERANCES	DESIGN	10/02/2010 M.RECEPUTO
0.0	±0.15	DRAWN 02/28/2011 HCL-MR
0.00	±0.05	CHK 02/28/2011 T.COHEN
0.000	± -	APVD 02/28/2011 T.COHEN
ANGLES	± 1°	

UNLESS OTHERWISE SPECIFIED DIMENSIONS ARE IN MM, DECIMAL MARKER IS A PERIOD

THESE DRAWINGS AND SPECIFICATIONS ARE THE PROPERTY OF AMPHENOL CORPORATION AND SHALL NOT BE REPRODUCED OR COPIED OR USED AS THE BASIS FOR THE MANUFACTURE OR SALE OF APPARATUS WITHOUT THE WRITTEN PERMISSION OF AMPHENOL CORPORATION.

MATERIAL 1	INTERPRET PER ASME Y14.5M	CODE IDENT 31413
------------	---------------------------	------------------

Amphenol TCS A Division of Amphenol Corporation 200 Innovative Way, Nashua, NH 03082 603.878.3000	
TITLE DC WAFER, OVERMOLDED, B & PAIR, GbX TW W/O CAPS, .0177" DRILL	REV C
PART NO. SEE TABLE 1 & 2	REV C
DRAWING NO. P-154-4522-500	REV C
ASSEM: P1199-4P-DC-WAFER-B-OVERMOLD	1.19-
DRAWING: P-154-4522-500	C.0
SIZE D	SHEET 2 OF 6

8

7

6

5

4

3

2

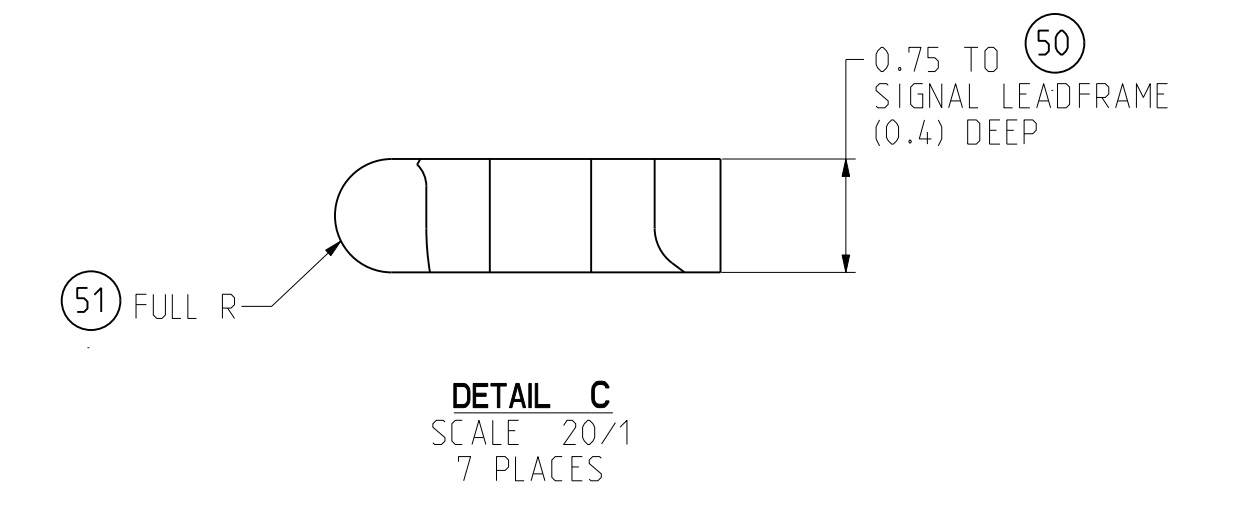
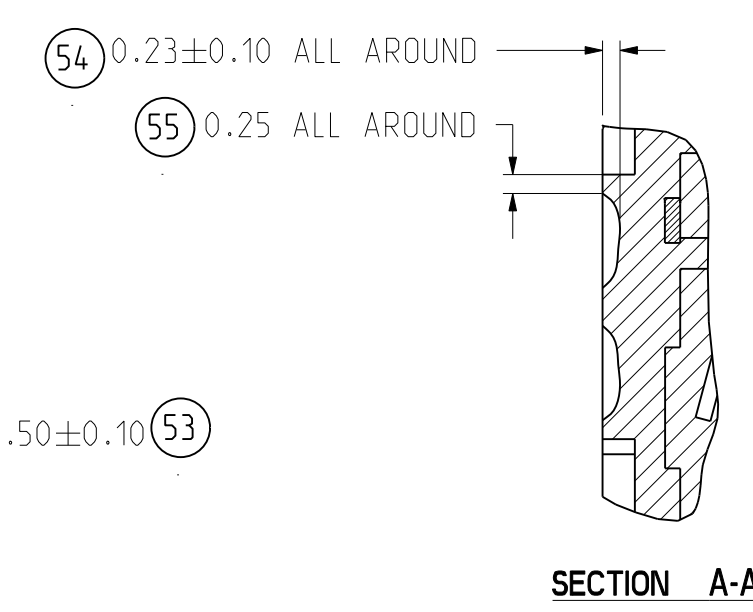
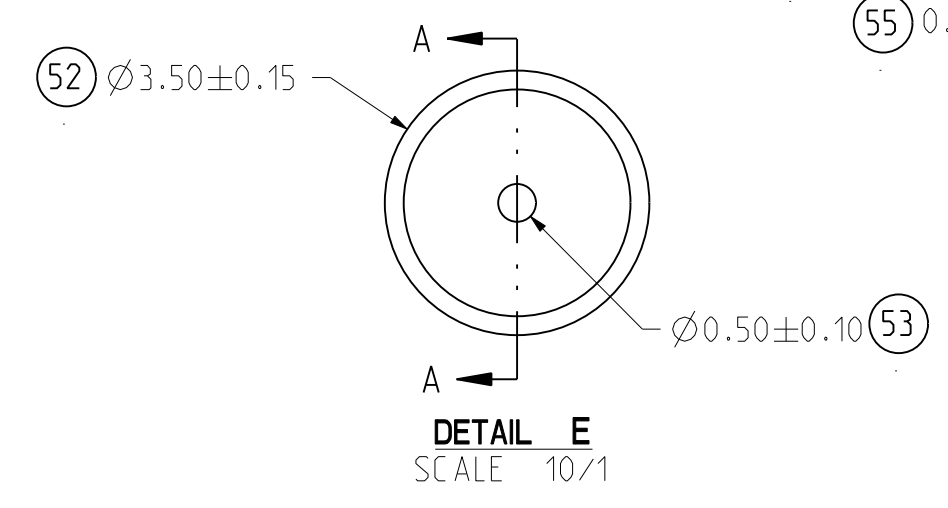
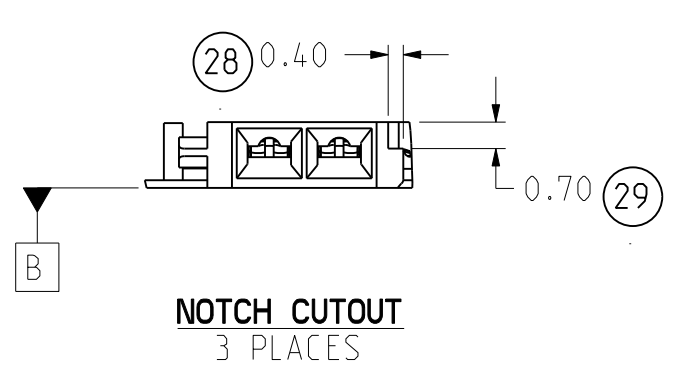
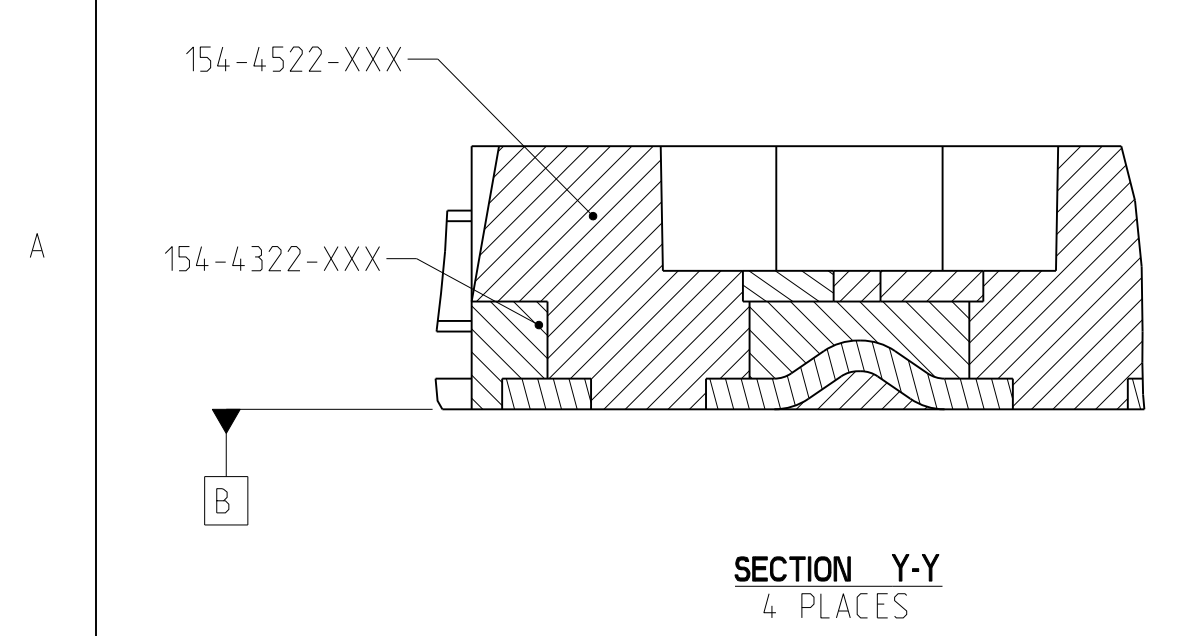
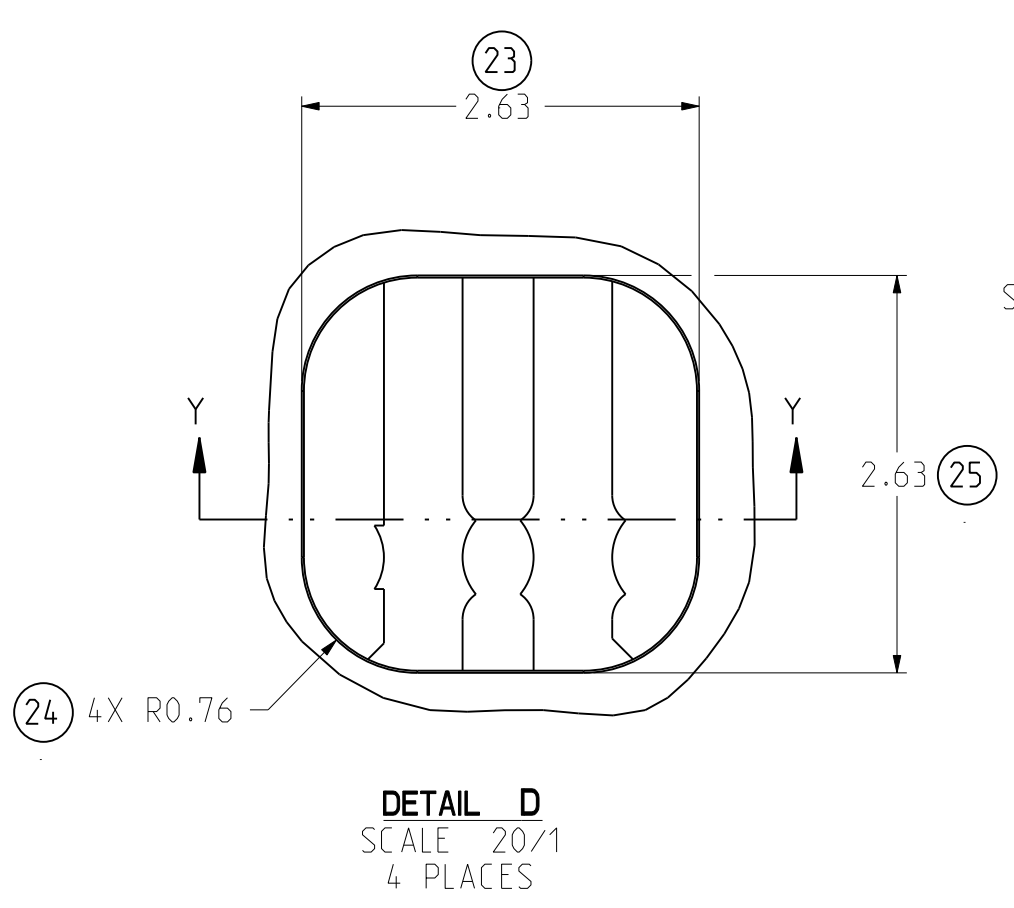
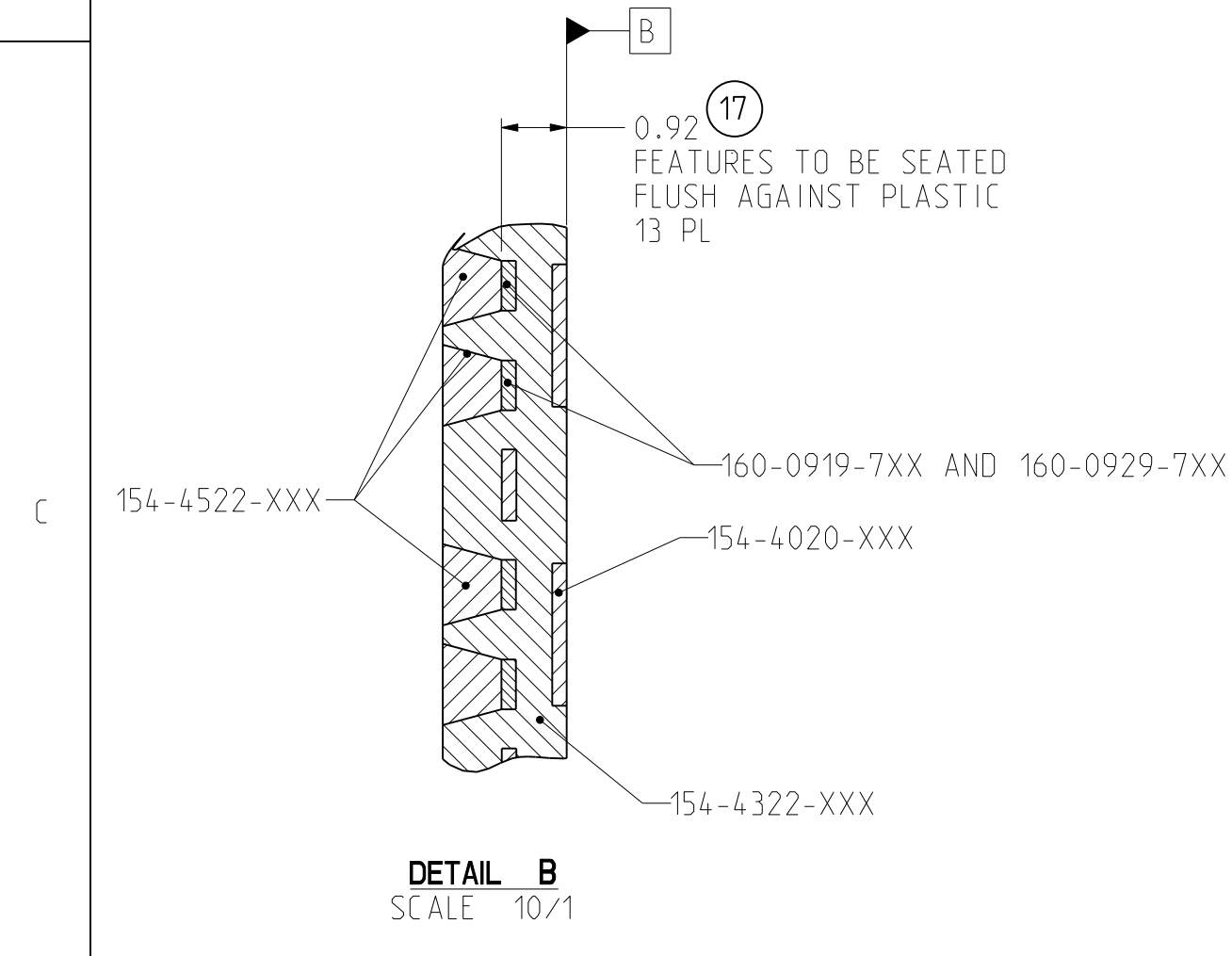
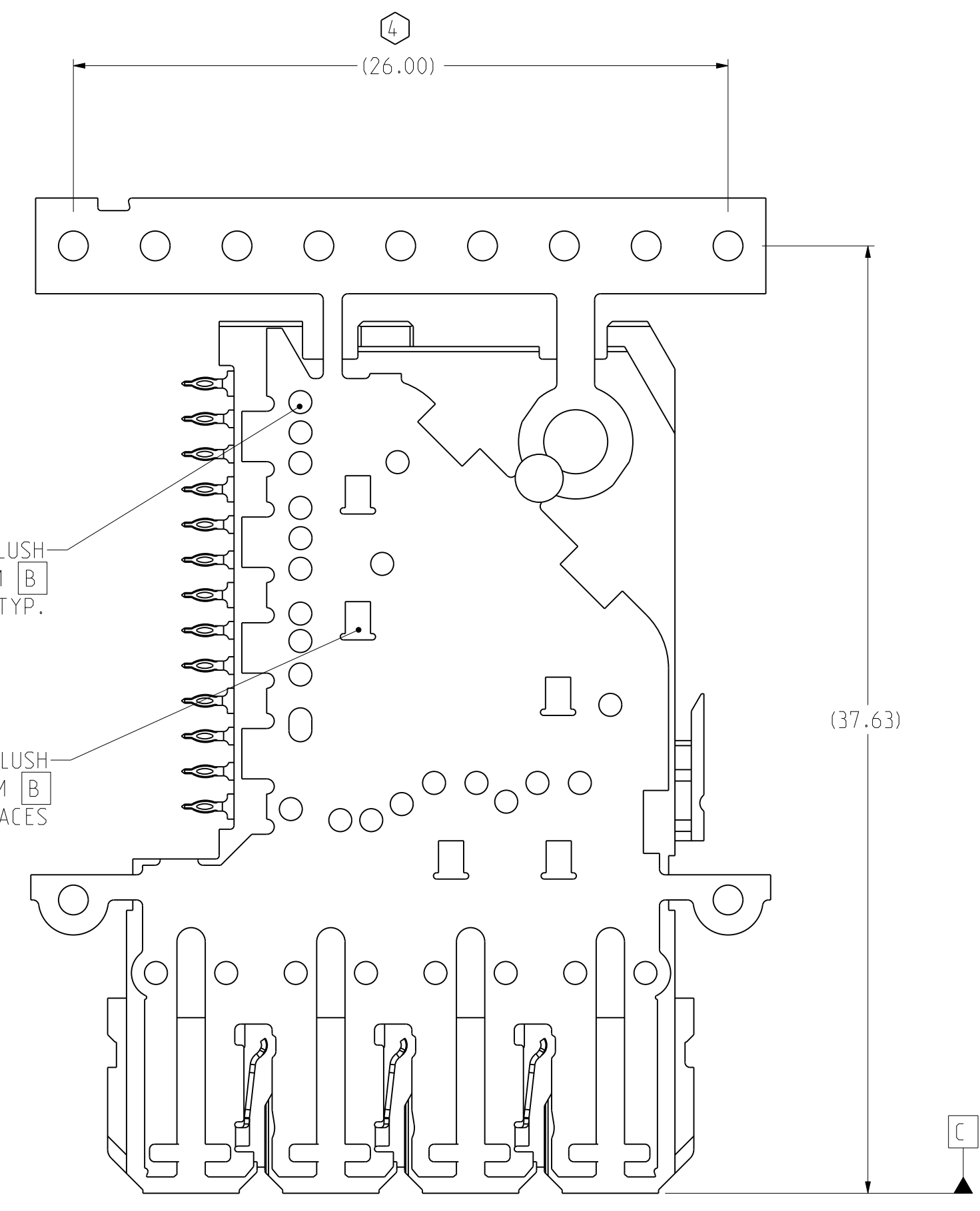
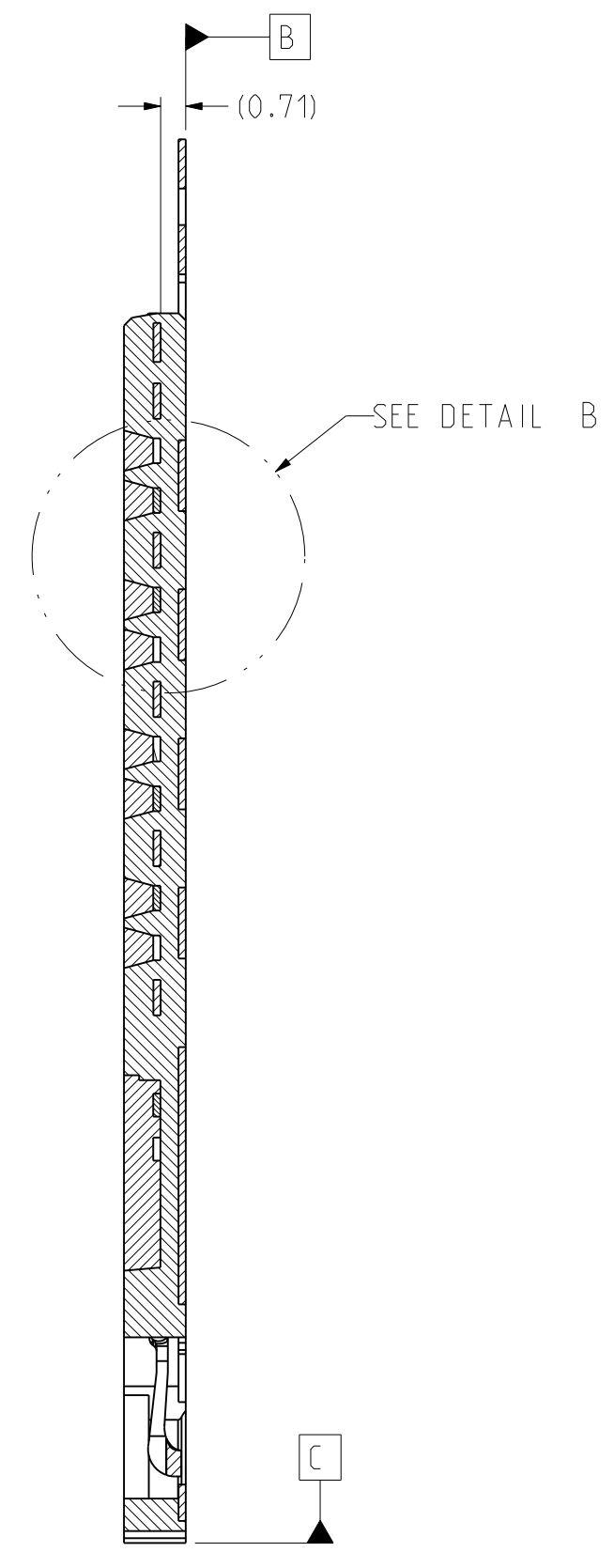
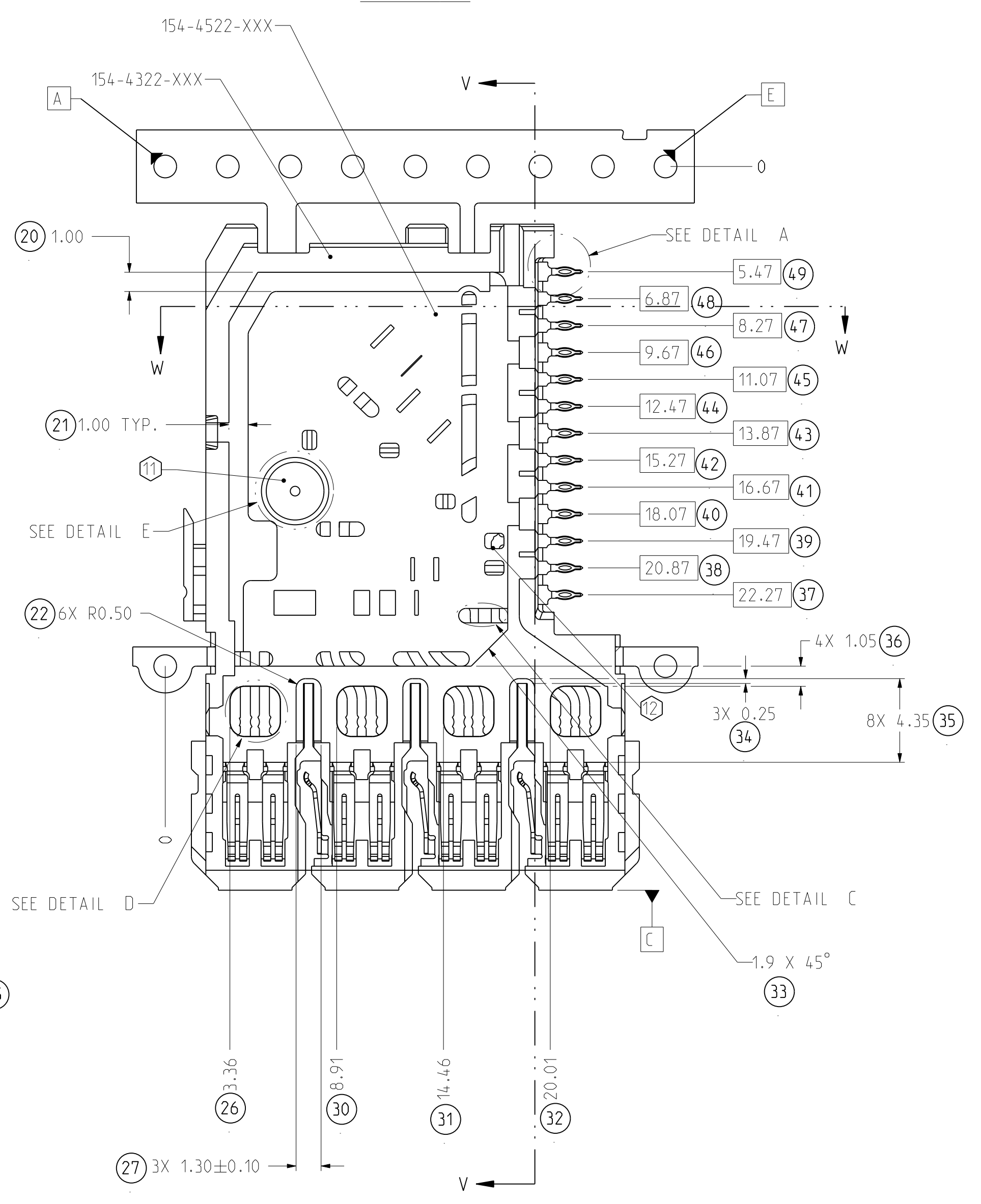
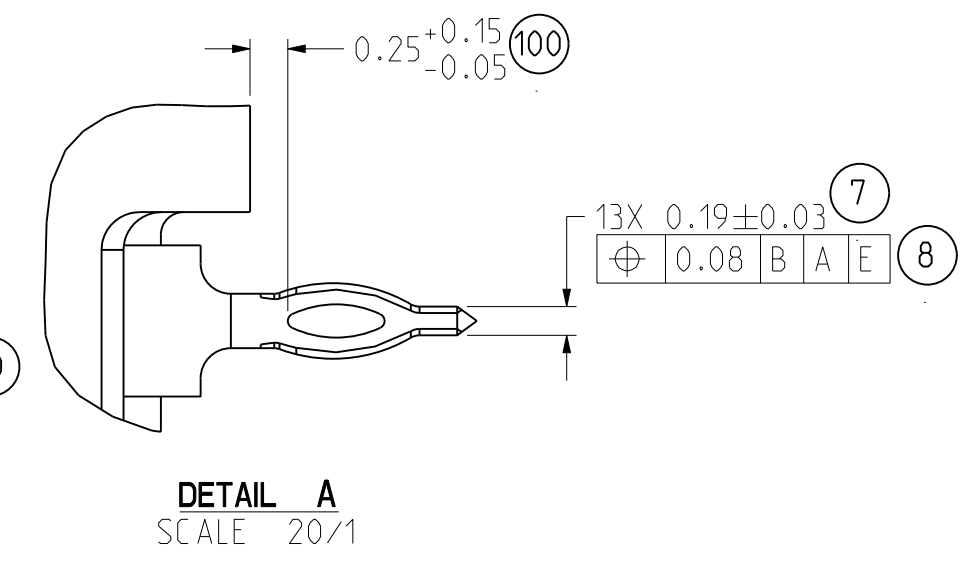
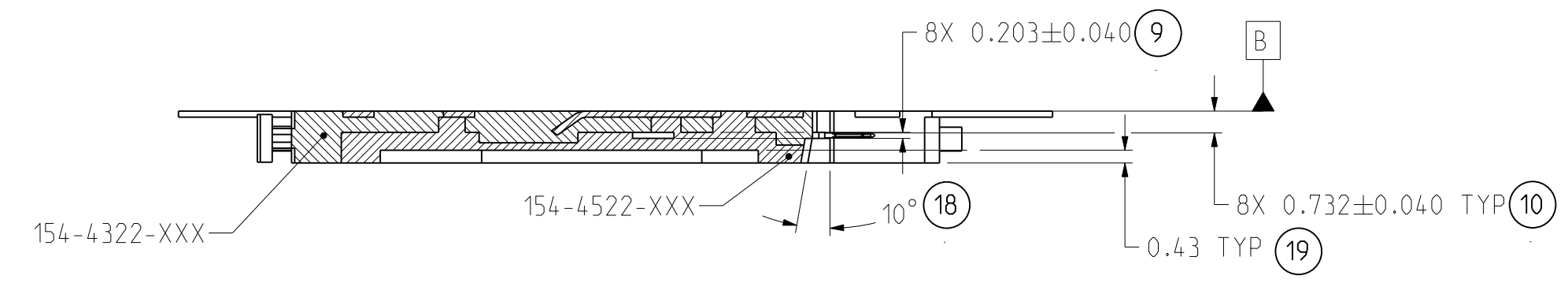
1

DRW NO.
P-154-4522-500

SH
2

REV
C

DRW NO.	P-154-4522-500	SH	3	REV	C	
ZONE	REV	SCR NUMBER	DESCRIPTION	BY	DATE	APPROVED
			SEE SHEET 1			



TOLERANCES	DESIGN	10/02/2010	M.RECEPUTO
0.0	±0.15	DRAWN	02/28/2011
0.00	±0.05	CHK	02/28/2011
0.000	±	APVD	02/28/2011
ANGLES	± 1°		

Amphenol TCS A Division of Amphenol Corporation 200 Innovative Way, Nashua, NH 03062 603.878.3000	
TITLE	DC WAFER, OVERMOLDED, B & PAIR, GbX TW W/O CAPS, .0177" DRILL
PART NO.	SEE TABLE 1 & 2
DRAWING NO.	P-154-4522-500
ASSEM.	P1199-4P-DC-WAFER-B-OVERMOLD
DRAWING:	P-154-4522-500
SIZE	D
SCALE	3/1
SHEET	3 OF 6

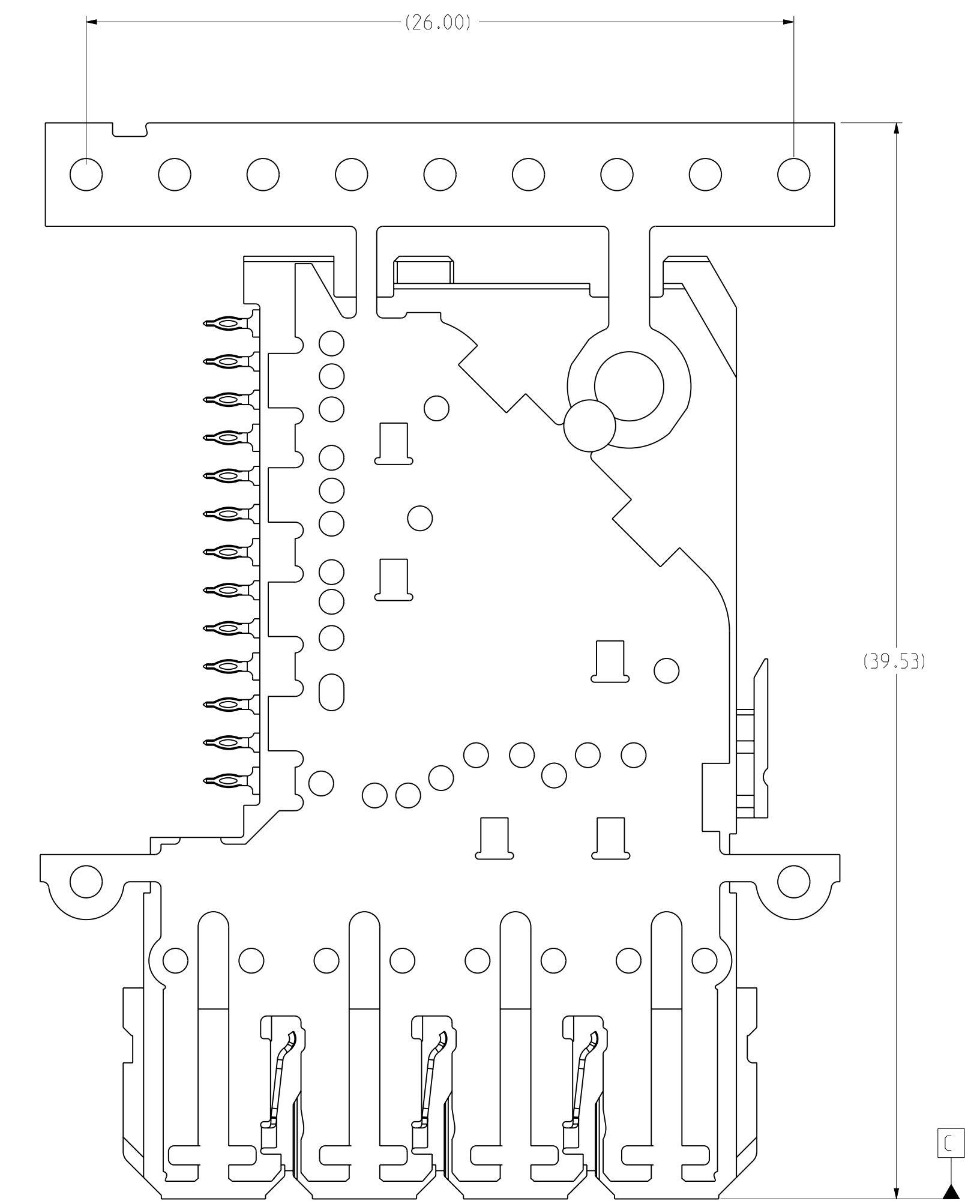
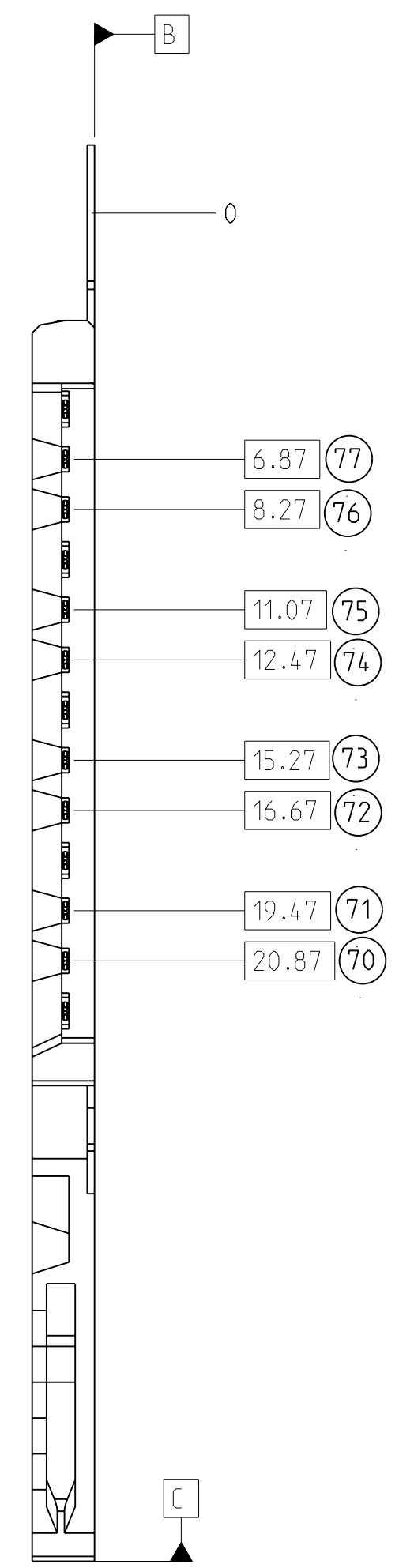
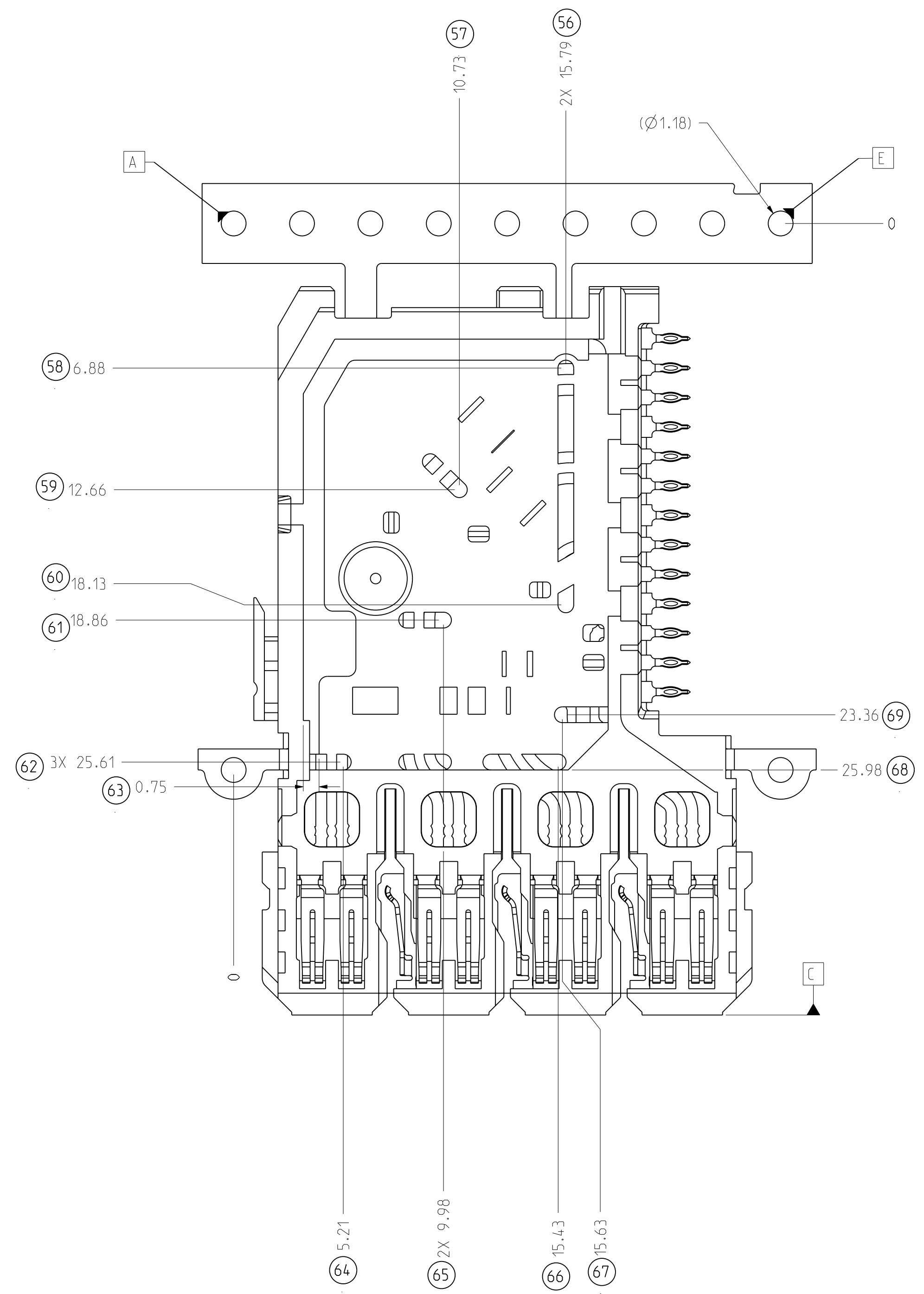
MATERIAL: 1
 INTERPRET PER ASME Y14.5M
 CODE IDENT 31413

UNLESS OTHERWISE SPECIFIED DIMENSIONS ARE IN MM, DECIMAL MARKER IS A PERIOD
 THESE DRAWINGS AND SPECIFICATIONS ARE THE PROPERTY OF AMPHENOL CORPORATION AND SHALL NOT BE REPRODUCED OR COPIED OR USED AS THE BASIS FOR THE MANUFACTURE OR SALE OF APPARATUS WITHOUT THE WRITTEN PERMISSION OF AMPHENOL CORPORATION.

DRW NO. P-154-4522-500

SH 3
 REV C

ZONE	REV	SCR NUMBER	DESCRIPTION	BY	DATE	APPROVED
			SEE SHEET 1			



SCALE 6/1

TOLERANCES	DESIGN	DATE	DESIGNER	Amphenol TCS A Division of Amphenol Corporation 200 Innovative Way, Nashua, NH 03062 603.878.3000	TITLE	PART NO.	REV
0.0 ±0.15	10/02/2010	M.RECEPUTO			DC WAFER, OVERMOLDED, B & PAIR, GDX TW W/O CAPS, .0177" DRILL	SEE TABLE 1 & 2	
0.00 ±0.05	02/28/2011	HCL-MR					
0.000 ± -	02/28/2011	T.COHEN					
ANGLES ± 1°	02/28/2011	T.COHEN					

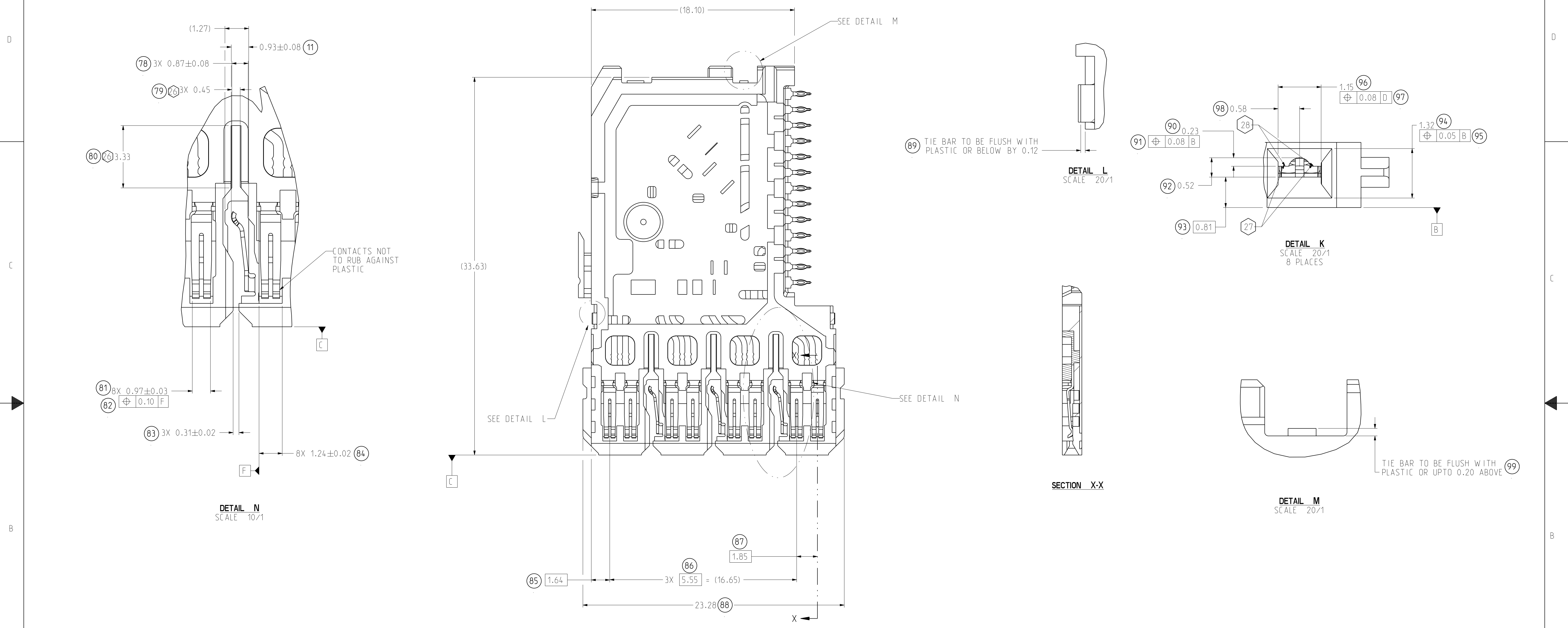
MATERIAL: UNLESS OTHERWISE SPECIFIED DIMENSIONS ARE IN MM, DECIMAL MARKER IS A PERIOD. THESE DRAWINGS AND SPECIFICATIONS ARE THE PROPERTY OF AMPHENOL CORPORATION AND SHALL NOT BE REPRODUCED OR COPIED OR USED AS THE BASIS FOR THE MANUFACTURE OR SALE OF APPARATUS WITHOUT THE WRITTEN PERMISSION OF AMPHENOL CORPORATION. INTERPRET PER ASME Y14.5M CODE IDENT 31413

DRAWING NO. P-154-4522-500
 ASSEM: P1199-4P-DC-WAFER-B-OVERMOLD
 DRAWING: P-154-4522-500
 SIZE D SCALE 3/1 SHEET 4 OF 6

DRW NO. P-154-4522-500

SH 4 REV C

DRW NO.	P-154-4522-500	SH	5	REV	C	
ZONE	REV	SCR NUMBER	DESCRIPTION	BY	DATE	APPROVED
			SEE SHEET 1			



- 24. ALL WAFERS TO BE ELECTRICALLY CHECKED FOR CONTINUITY AND HIPOT TESTED.
- 25. LOCATE SURFACE WITH FIXTURE PART NUMBER 693-1181-000.
- Ⓣ6 NO BEAM TIPS VISIBLE IN WINDOW.
- Ⓣ7 BEAM MATING RADIUS ON PLASTIC.
- Ⓣ8 EXPOSED METAL MUST BE PRESENT IN SLOT

TOLERANCES		DESIGN 10/02/2010 M.RECEPUTO	Amphenol TCS A Division of Amphenol Corporation 200 Innovative Way, Nashua, NH 03062 603.878.3000	TITLE	DC WAFER, OVERMOLDED, B 4 PAIR, GbX TW W/O CAPS, .0177" DRILL
0.0	±0.15	DRAWN 02/28/2011 HCL-MR		PART NO.	SEE TABLE 1 & 2
0.00	±0.05	CHK 02/28/2011 T.COHEN		DRAWING NO.	P-154-4522-500
0.000	±	APVD 02/28/2011 T.COHEN		ASSEM: P1199-4P-DC-WAFER-B-OVERMOLD	1.19-
ANGLES ± 1°		UNLESS OTHERWISE SPECIFIED DIMENSIONS ARE IN MM, DECIMAL MARKER IS A PERIOD		DRAWING: P-154-4522-500	C.O
MATERIAL: ①		THESE DRAWINGS AND SPECIFICATIONS ARE THE PROPERTY OF AMPHENOL CORPORATION AND SHALL NOT BE REPRODUCED OR COPIED OR USED AS THE BASIS FOR THE MANUFACTURE OR SALE OF APPARATUS WITHOUT THE WRITTEN PERMISSION OF AMPHENOL CORPORATION.		SIZE D	SCALE 3/1
INTERPRET PER ASME Y14.5M		CODE IDENT 31413		SHEET 5 OF 6	

DRW NO. P-154-4522-500

SH 5 REV C

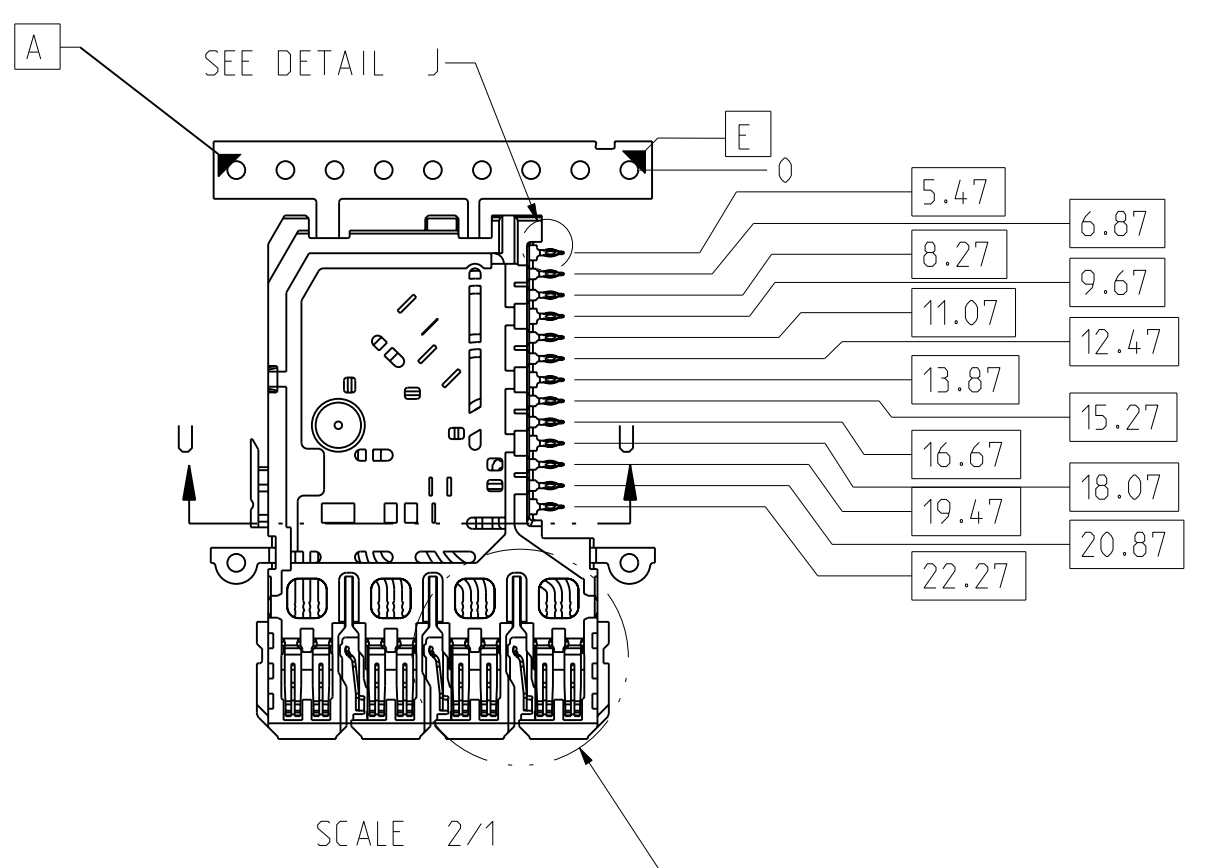
ZONE	REV	SCR NUMBER	DESCRIPTION	BY	DATE	APPROVED
			SEE SHEET 1			

FIRST PIECE INSPECTION REQUIREMENTS

ITEM	FEATURE	METHOD	NOTES
1	CORRECT REEL NO. AND ORIENTATION	VISUAL	
2	BEAM MATING RADIUS ON PLASTIC	VISUAL	
3	NO BEAM TIPS IN WINDOW	VISUAL	
4	FLASH PER NOTES ② & ⑨	VISUAL	
5	CAMBER/TWIST/COILSET PER EGPS-201	VISUAL	
6	COMPLIANT COIN RADIUS	VISUAL	

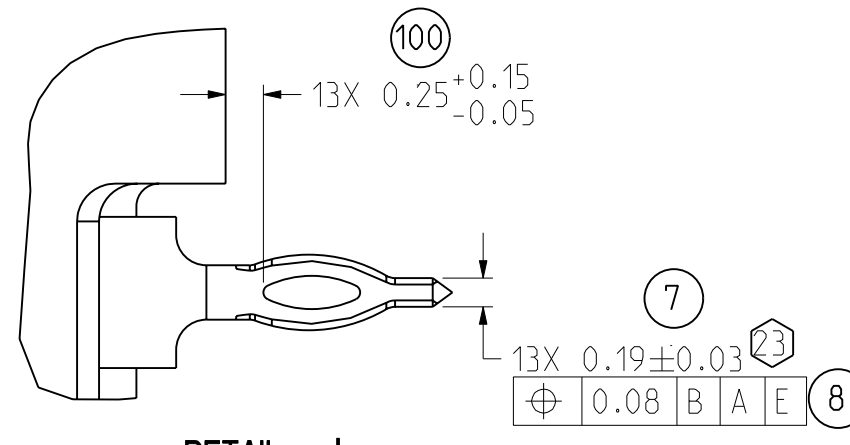
• ALL BALLOONED DIMENSION IN THIS SHEET MUST HAVE AN ACTUAL MEASUREMENT VALUE NOTES:

②③ THESE FEATURES MUST BE MEASURED IN-PROCESS USING SPC.

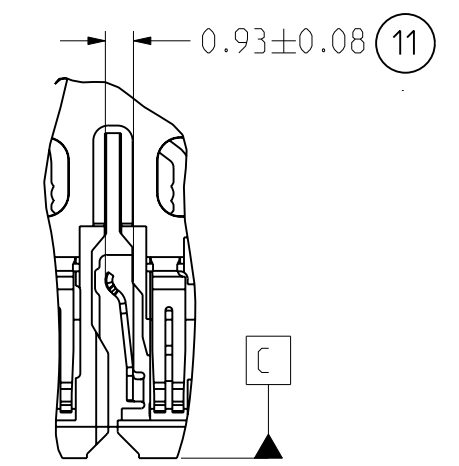


SCALE 2/1

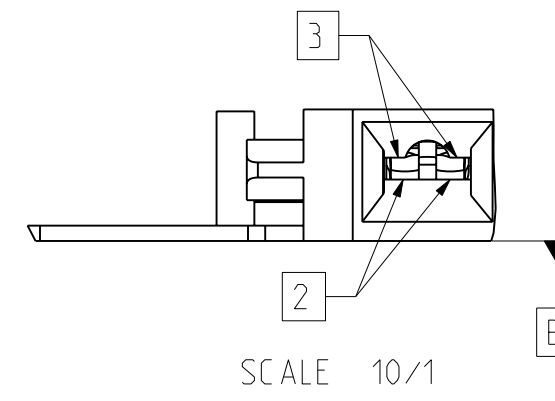
SEE DETAIL J



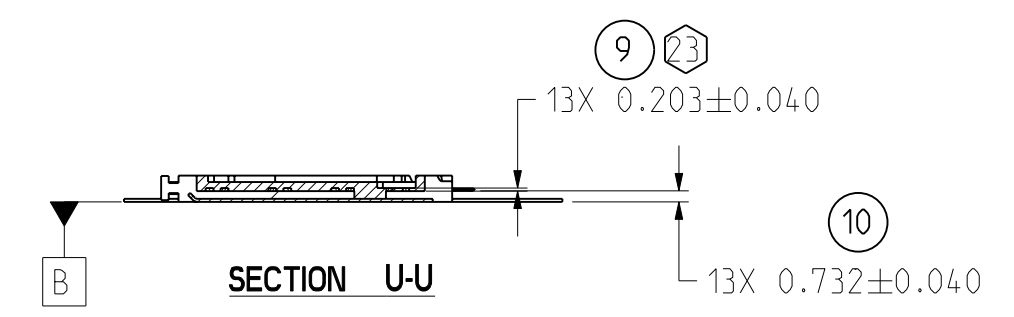
DETAIL J SCALE 20/1



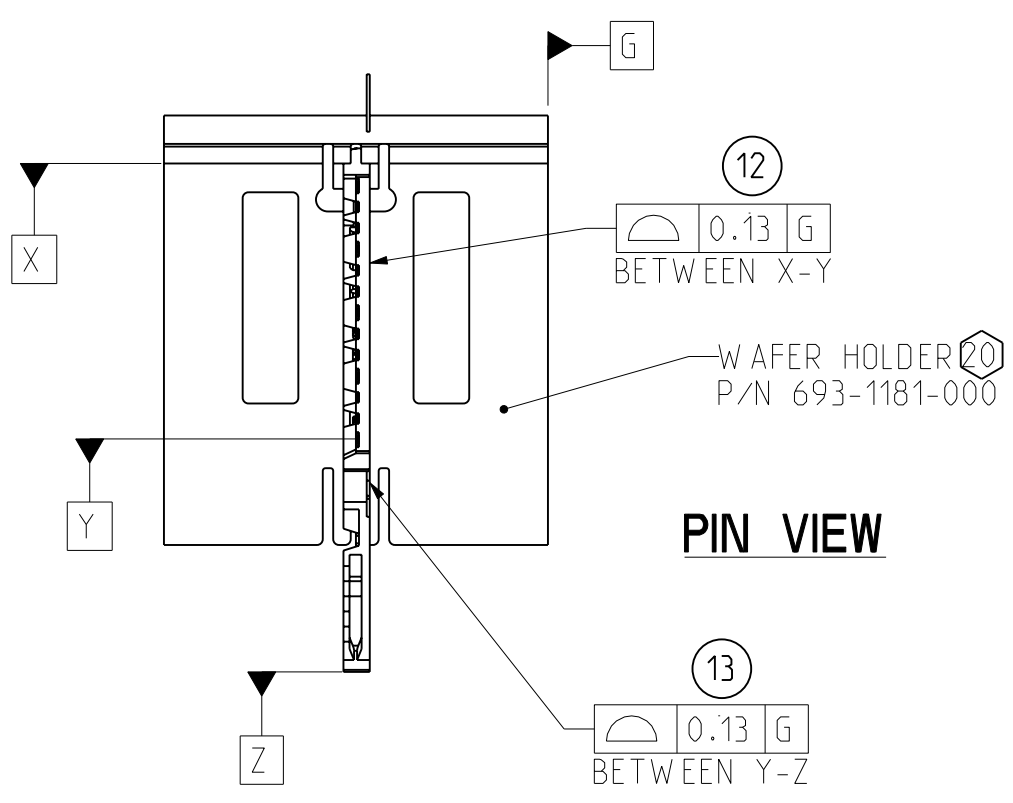
DETAIL F SCALE 4/1



SCALE 10/1

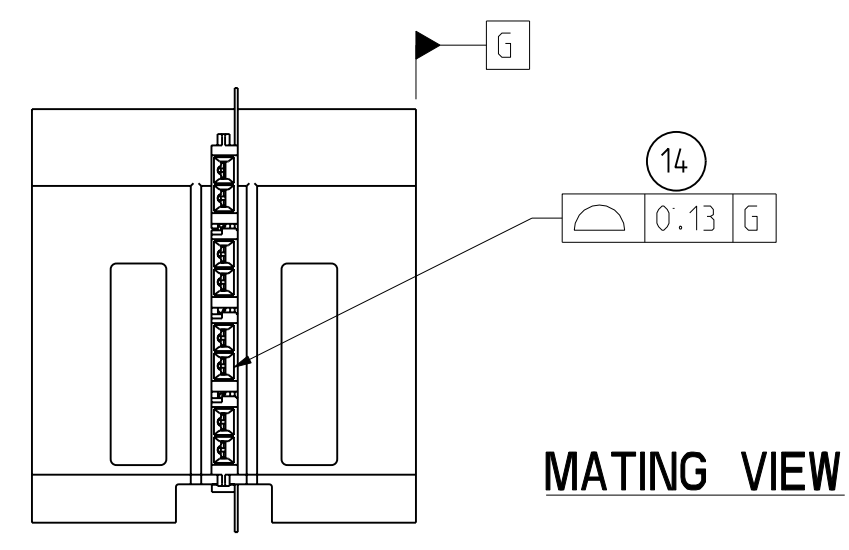


SECTION U-U



PIN VIEW

0.13 G BETWEEN Y-Z



MATING VIEW

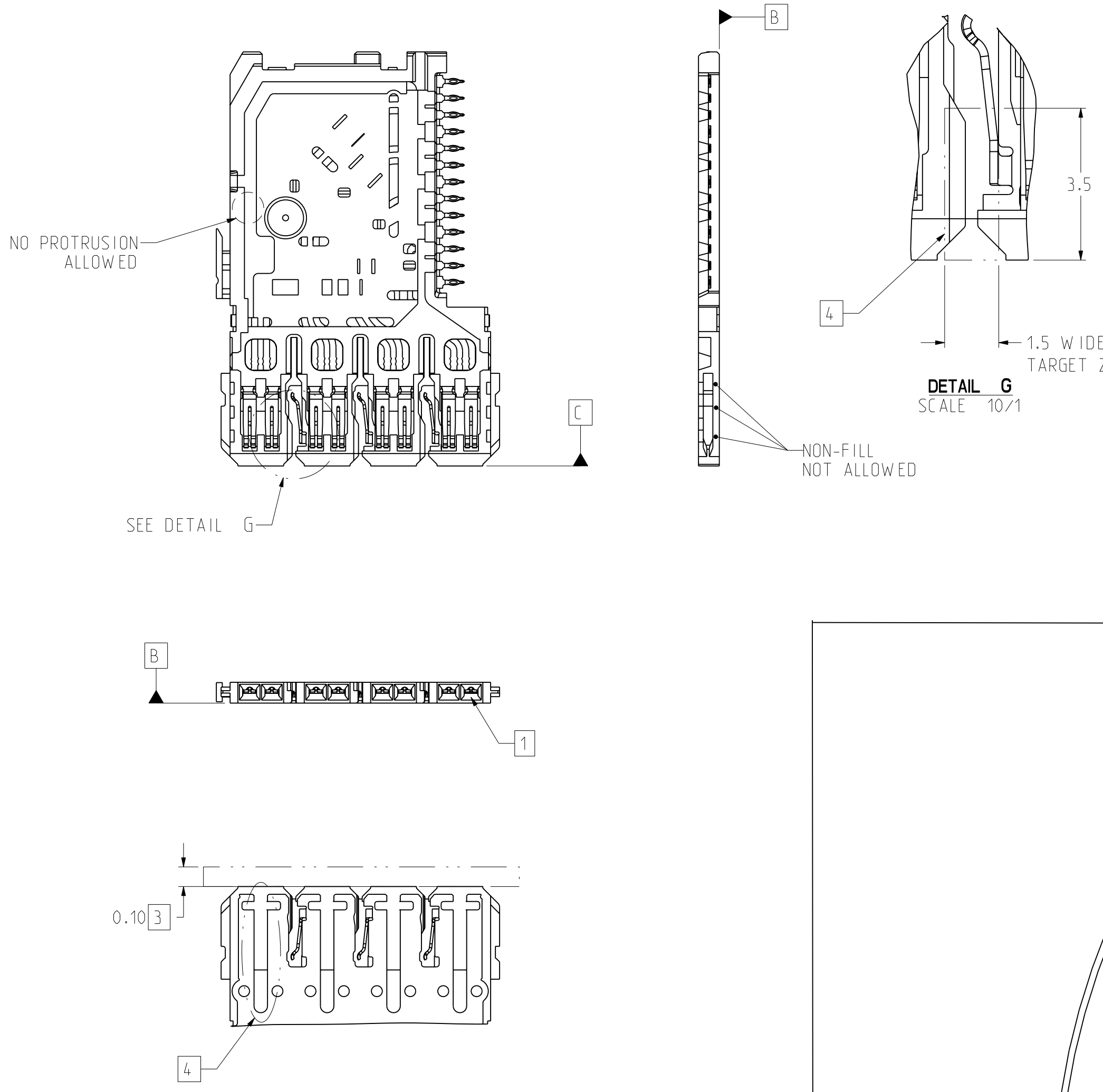
0.13 G

PROFILE MEASURING TECHNIQUE

- GENERAL SPECIFICATIONS
- 0.20 FLASH ACCEPTABLE
 - ① WINDOW FLASH 0.05 MAX
 - ② 0.10 MAX
 - ③ 0.10 MAX
 - ④ 0.30 MAX SEE NOTE 1

NOTE:
1. FLASH NOT TO EXCEED OVERALL THICKNESS SPECIFICATIONS

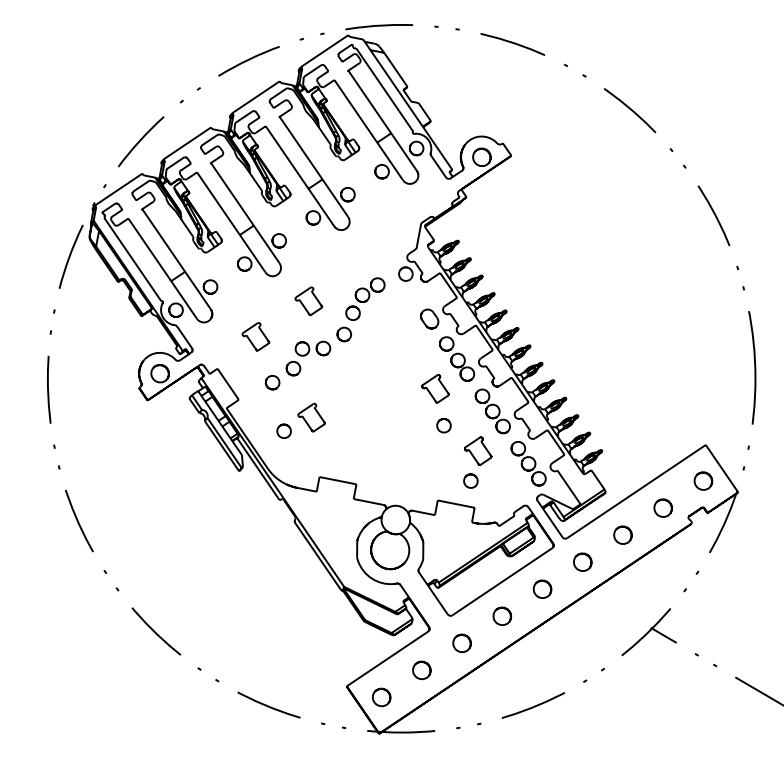
FLASH MAP VIEWS



DETAIL G SCALE 10/1

SEE DETAIL G

SCALE 1/2



SCALE 1/2

MATERIAL: ①
INTERPRET PER ASME Y14.5M
CODE IDENT 31413

TOLERANCES	DESIGN	DATE	DESIGNER
0.0 ±0.15	10/02/2010		M.RECEPUTO
0.00 ±0.05	02/28/2011		HCL-MR
0.000 ± -	02/28/2011		T.COHEN
ANGLES ± 1°	02/28/2011		T.COHEN

Amphenol TCS
A Division of Amphenol Corporation
200 Innovative Way, Nashua, NH 03062 603.878.3000

TITLE: DC WAFER, OVERMOLDED, B & PAIR, GbX TW W/O CAPS, .0177" DRILL

PART NO. SEE TABLE 1 & 2

DRAWING NO. P-154-4522-500

ASSEM: P1199-4P-DC-WAFER-B-OVERMOLD DRAWING: P-154-4522-500

SIZE D SCALE 3/1 SHEET 6 OF 6

DRW NO. P-154-4522-500

SH 6 REV C

X-ON Electronics

Largest Supplier of Electrical and Electronic Components

Click to view similar products for [High Speed/Modular Connectors](#) category:

Click to view products by [Amphenol](#) manufacturer:

Other Similar products are found below :

[650827-1](#) [74040-1346](#) [1410191-1](#) [1410337-1](#) [1410368-3](#) [1410964-2](#) [1410326-3](#) [1410367-3](#) [1410971-4](#) [1467833-1](#) [2000877-1](#) [2000878-1](#)
[2041314-1](#) [2065387-1](#) [2187307-1](#) [163P](#) [1934290-1](#) [2000875-1](#) [2065917-1](#) [2102736-2](#) [FSR-40](#) [2169868-2](#) [22354-8](#) [437-5040-000](#) [5-](#)
[1393565-0](#) [039-0246-000](#) [0740618502](#) [0761601016](#) [0784461022](#) [10123159-12ELF](#) [030-2415-003/100 PK](#) [030-7380-004](#) [030-2494-001](#)
[532939-1](#) [5532901-3](#) [3-1469268-7](#) [74748-102LF](#) [73670-0247](#) [10041743-101LF](#) [10066670-100002LF](#) [1-533915-1](#) [249-4515-000](#) [7-1469373-](#)
[3](#) [DL2-2J/S](#) [2000713-8](#) [2000713-7](#) [3011-21](#) [757105208](#) [EBTF-4-10-2.0-S-RA-1](#) [430305-001](#)