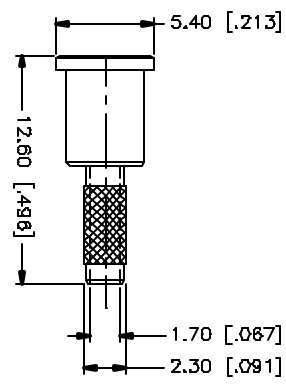
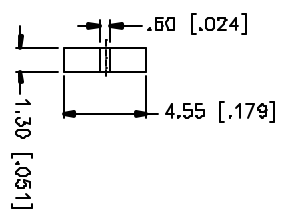
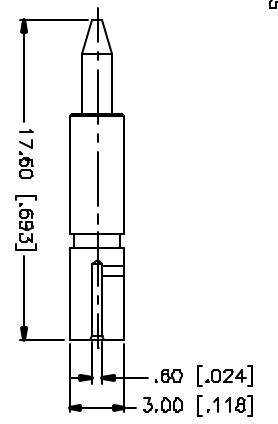
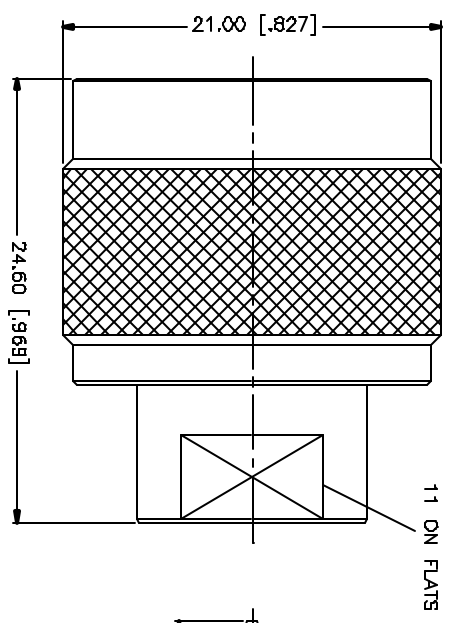
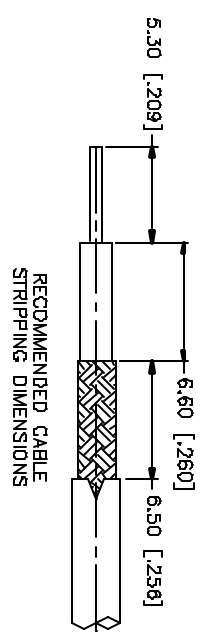
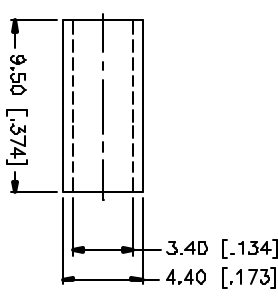
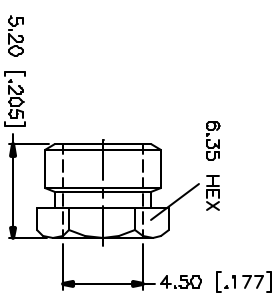


REV.	DATE	DESCRIPTION
A	08/30/00	MODIFY BARREL O.D. DIMENSION
B	05/22/05	UPDATE DRAWING FORMAT/ MODIFY PLATING SPEC



NOTE:
 USE .151 HEX CRIMP DIE TO TERMINATE FERRULE TO CABLE.
 - CONNEX TOOL 47-10160
 - IDEAL TOOL 36-489



QTY	FINISH	MATERIAL	DESCRIPTION
1	NEOXOTE	BRASS	BODY
1	NATURAL	TEFLON	INSULATOR
1	COLD	BRASS	CONTACT PIN
1	NEOXOTE	BRASS	BARREL
1	NEOXOTE	BRASS	HEX NUT
1	NEOXOTE	BRASS	FERRULE

APPROVALS	DATE
Q.R.S.	05/22/05

UNLESS OTHERWISE SPECIFIED DIMENSIONS ARE IN INCHES AND DECIMAL FRACTIONS THEREOF.
UNLESS OTHERWISE SPECIFIED DIMENSIONS FOR MILLIMETERS ARE:
D.5 - 8mm ± 0.20mm
B - 30mm ± 0.40mm
30 - 120mm ± 0.60mm
UNLESS OTHERWISE SPECIFIED DIMENSIONS FOR METERS ARE:
.020 - .315 = ± 0.007"
.315 - 1.180 = ± 0.015"
1.180 - 4.724 = ± 0.030"

Q&D FILE	DWG. NO.	REV.	SIZE	SCALE
C:/172/172171.DWG	172171.DWG	B	A	NA

Amphenol Connex

N CRIMP PLUG
 (FOR RG-316/U DOUBLE BRAID CABLE)

PART NO. 172171

X-ON Electronics

Largest Supplier of Electrical and Electronic Components

Click to view similar products for [RF Connectors / Coaxial Connectors](#) category:

Click to view products by [Amphenol](#) manufacturer:

Other Similar products are found below :

[8915-1511-000](#) [89674-0827](#) [6001-7071-019](#) [6002-7051-003](#) [6002-7551-202](#) [6059674-1](#) [619550-1](#) [630059-000](#) [M39030/3-01N](#) [M3933/25-36N](#) [6500-7071-046](#) [6769](#) [CX050L2AQ](#) [7002-1542-011](#) [7004-1512-000](#) [7009-1511-004](#) [7010-1511-000](#) [7029-1511-060](#) [7101-1541-010](#) [7101-1571-002](#) [7105-1521-002](#) [7145-1521-002](#) [7203-1571-003](#) [7209-1511-011](#) [7210-1511-015](#) [7210-1511-019](#) [73137-5015](#) [73216-2241](#) [7325-1512-000](#) [73404-2300](#) [7405-1521-005](#) [7405-1521-802](#) [7406-1521-005](#) [8527](#) [8547](#) [FS11V](#) [8808-1511-001](#) [9049-9513-000](#) [9074-9513-000](#) [9101-9573-002](#) [910A205F](#) [9130-9573-002](#) [PL11SC-026](#) [PL375-33](#) [PL40-5](#) [PL71-9](#) [PL74C-221](#) [PL75MC-217](#) [PL803-7](#) [980-8666-005](#)