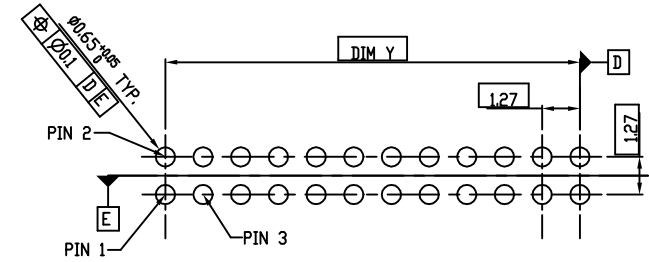
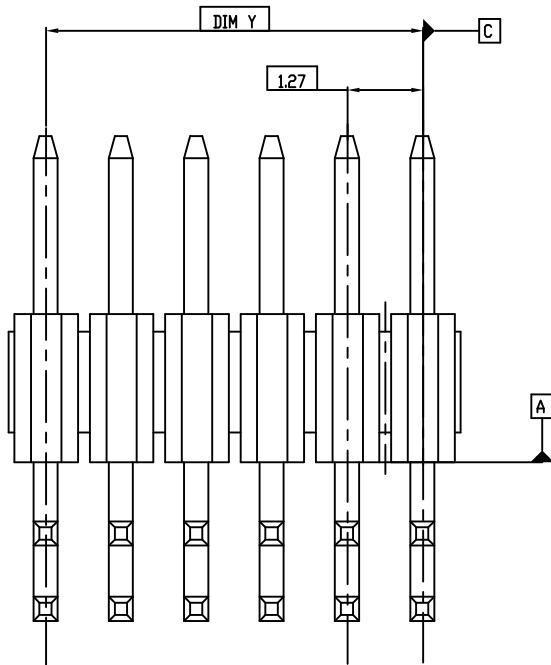
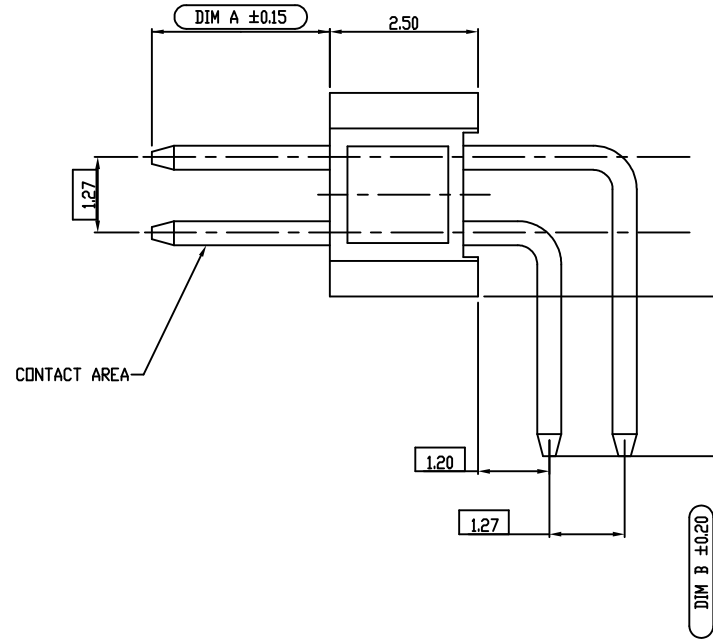
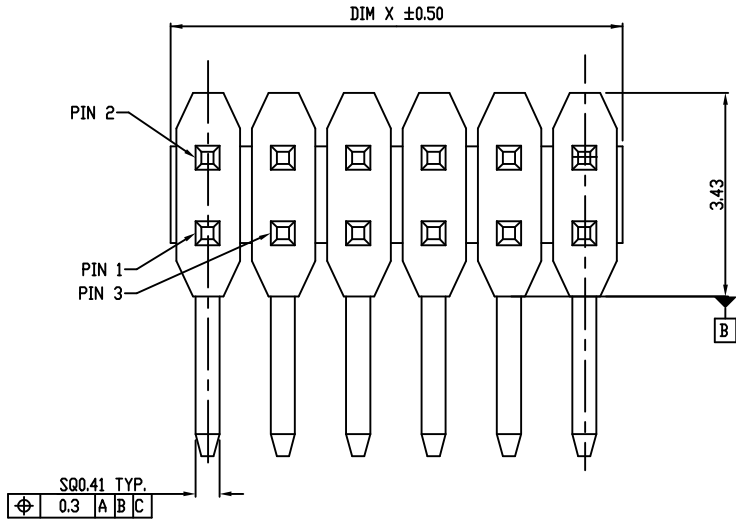


PART NO.
20021112



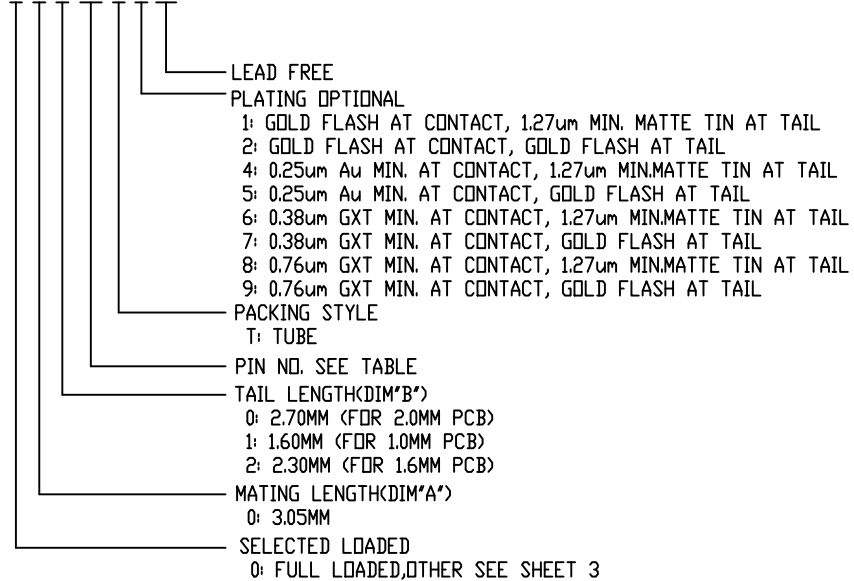
mat'l. code		surface ISO 1302 ✓		tolerance ISO 406 ISO 1101		projection		product family	
ltr		ecn no		dr		date		MINITEK127®	
F		ELX-N-23548		TIM		03/21/16		title	
G		ELX-N-26146		TONY		02/22/16		UNSHROUDED HDR RA TH	
								dwg no	
								sheet 1 of 3	
								size	
								A3	
								type	
								Product Customer Drawing	
sheet index		revision sheet		G G G		1 2 3			

PART NO.	PDS.	DIM*X"	DIM*Y"
20021112-0XX04XXLF	2 X 2	2.54	2.54
20021112-0XX06XXLF	2 X 3	3.81	2.54
20021112-0XX08XXLF	2 X 4	5.08	3.81
20021112-0XX10XXLF	2 X 5	6.35	5.08
20021112-0XX12XXLF	2 X 6	7.62	6.35
20021112-0XX14XXLF	2 X 7	8.89	7.62
20021112-0XX16XXLF	2 X 8	10.16	8.89
20021112-0XX18XXLF	2 X 9	11.43	10.16
20021112-0XX20XXLF	2 X 10	12.70	11.43
20021112-0XX12XXLF	2 X 11	13.97	12.70
20021112-0XX24XXLF	2 X 12	15.24	13.97
20021112-0XX26XXLF	2 X 13	16.51	15.24
20021112-0XX28XXLF	2 X 14	17.78	16.51
20021112-0XX30XXLF	2 X 15	19.05	17.78
20021112-0XX32XXLF	2 X 16	20.32	19.05
20021112-0XX34XXLF	2 X 17	21.59	20.32
20021112-0XX36XXLF	2 X 18	22.86	21.59
20021112-0XX38XXLF	2 X 19	24.13	22.86
20021112-0XX40XXLF	2 X 20	25.40	24.13
20021112-0XX42XXLF	2 X 21	26.67	25.40
20021112-0XX44XXLF	2 X 22	27.94	26.67
20021112-0XX46XXLF	2 X 23	29.21	27.94
20021112-0XX48XXLF	2 X 24	30.48	29.21
20021112-0XX50XXLF	2 X 25	31.75	30.48

PART NO.	PDS.	DIM*X"	DIM*Y"
20021112-0XX52XXLF	2 X 26	33.02	31.75
20021112-0XX54XXLF	2 X 27	34.29	33.02
20021112-0XX56XXLF	2 X 28	35.56	34.29
20021112-0XX58XXLF	2 X 29	36.83	35.56
20021112-0XX60XXLF	2 X 30	38.10	36.83
20021112-0XX62XXLF	2 X 31	39.37	38.10
20021112-0XX64XXLF	2 X 32	40.64	39.37
20021112-0XX66XXLF	2 X 33	41.91	40.64
20021112-0XX68XXLF	2 X 34	43.18	41.91
20021112-0XX70XXLF	2 X 35	44.45	43.18
20021112-0XX72XXLF	2 X 36	45.72	44.45
20021112-0XX74XXLF	2 X 37	46.99	45.72
20021112-0XX76XXLF	2 X 38	48.26	46.99
20021112-0XX78XXLF	2 X 39	49.53	48.26
20021112-0XX80XXLF	2 X 40	50.80	49.53
20021112-0XX82XXLF	2 X 41	52.07	50.80
20021112-0XX84XXLF	2 X 42	53.34	52.07
20021112-0XX86XXLF	2 X 43	54.61	53.34
20021112-0XX88XXLF	2 X 44	55.88	54.61
20021112-0XX90XXLF	2 X 45	57.15	55.88
20021112-0XX92XXLF	2 X 46	58.42	57.15
20021112-0XX94XXLF	2 X 47	59.69	58.42
20021112-0XX96XXLF	2 X 48	60.96	59.69
20021112-0XX98XXLF	2 X 49	62.23	60.96
20021112-0XXA0XXLF	2 X 50	63.50	62.23

NOTES:
 1.MATERIAL:
 HOUSING: HIGH TEMPERATURE THERMOPLASTIC, UL94-V0 BLACK.
 TERMINAL: COPPER ALLOY
 2.THE HOUSING WILL WITHSTAND EXPOSURE TO 260~C PEAK TEMPERATURE FOR 10 SECONDS IN A WAVE SOLDER OR VAPOR PHASE REFLOW OVEN.
 3.THIS PRODUCT MEETS EUROPEAN UNION DIRECTIVES AND OTHER COUNTRY REGULATIONS AS DESCRIBED IN GS-22-008.
 4.PRODUCT SPEC: GS-12-629
 5.PACKAGE SPEC: GS-14-1420

20021112- 0 X X XX X X LF

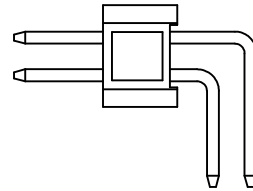
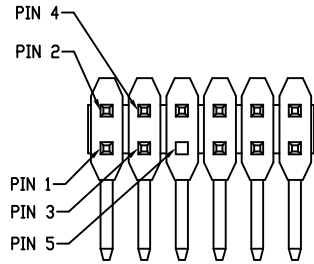


Amphenol FCI

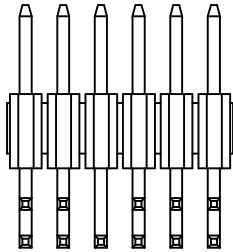
© 2016 AFCI

mat'l. code		surface	tolerance	projection	product family
		ISO 1302	ISO 406 ISO 1101		MINITEK127®
ltr	ecn no	dr	date	tolerances unless otherwise specified	title
				linear	UNSHROUDED HDR RA TH
				angles	
				0±2'	scale 1:1
				dr	ZK HU 08/01/12
				eng	ZK HU 08/01/12
				chr	BIAN RICK 08/01/12
				app	BIAN RICK 08/01/12
sheet index	revision sheet				Amphenol FCI
					dwg no 20021112 sheet 2 of 3 size A3
					type Product Customer Drawing

PART NO.
20021112



PART NO.	AMOUNT OF PINS	PIN FREE LOADED
20021112-1XXXXXXLF	13	PIN 5



20021112-1XXXXXXLF REMOVE PIN 5

Amphenol
FCI

© 2016 AFCI

mat'l. code		surface ISO 1302	tolerance ISO 406	projection ISO 1101	product family MINITEK127®
ltr	ecn no	dr	date	tolerances unless otherwise specified	title
				angles linear .0±.30 .00±.20 0±2° .000±.10	UNSHROUDED HDR RA TH
				mm	scale 1:1
		dr	ZK HU	08/01/12	Amphenol FCI
		engr	ZK HU	08/01/12	dwg no
		chr	BIAN RICK	08/01/12	sheet 3 of 3
		appd	BIAN RICK	08/01/12	size A3
sheet index	revision sheet				type Product Customer Drawing

X-ON Electronics

Largest Supplier of Electrical and Electronic Components

Click to view similar products for [Headers & Wire Housings](#) category:

Click to view products by [Amphenol](#) manufacturer:

Other Similar products are found below :

[892-18-020-10-001101](#) [58102-G61-06LF](#) [582553-1](#) [0009485154](#) [009176003701906](#) [0050291907](#) [LY20-4P-DT1-P1E-BR](#) [02.125.8002.8](#)
[609-3404](#) [61062-3](#) [622-0430](#) [622-3653LF](#) [63453-116](#) [636-1030](#) [636-1427](#) [636-3427](#) [636-4007](#) [641938-9](#) [641991-4](#) [644827-2](#) [65817-010LF](#)
[65817-015LF](#) [65863-015LF](#) [66207-023LF](#) [67095-007LF](#) [67601157](#) [68648-049](#) [70.362.1628.0](#) [70-4210](#) [70-4226B](#) [70-4853B](#) [707-5020](#) [707-](#)
[5028](#) [71.350.2428.0](#) [71918-208LF](#) [71961-016LF](#) [733-134](#) [733-162](#) [754199-000](#) [760-3052](#) [787-8014-00](#) [79531-3000](#) [FCN-360C032-B](#) [FCN-](#)
[367T-T012/H](#) [FCN-723D010/2](#) [80.063.4001.1](#) [800-90-001-10-001000](#) [800-90-010-10-002000](#) [801-43-002-10-013000](#) [801-43-006-10-002000](#)