

5

4

3

2

1

SPECIFICATIONS

ELECTRICAL

FREQUENCY RANGE DC- 18GHz

ATTENUATION ACCURACY ACROSS FREQ. RANGE
01-06 dB ±0.30 dB
07-10 dB ±0.50 dB
11-20 dB ±0.75 dB
21-30 dB ±1.00 dB

VSWR
DC - 4 GHz 1.15:1 MAX
4 - 12.4 GHz 1.25:1 MAX
12.4 - 18 GHz 1.35:1 MAX

INPUT POWER 2 WATTS AVG. @ 25°C
DERATES LINEARLY TO 10% @ 125°C FROM 25°C

RF LEAKAGE/RFI >65 dBc (>90 dBc TYP.)

PEAK POWER 500 WATTS
(5 µ Sec PULSE WIDTH, .25% DUTY CYCLE)

IMPEDANCE 50 OHMS

OPERATING TEMP RANGE 4 KELVIN TO +125°C

MECHANICAL

CONNECTOR BODIES PASSIVATED STAINLESS STEEL
CENTER CONDUCTORS GOLD PLATED BERYLLIUM COPPER
INSULATORS PTFE (TEFLON) IAW ASTM-D1710
RESISTIVE ELEMENT THIN FILM ON CERAMIC RESISTIVE CIRCUIT

NOT A HERMETIC SEALED UNIT

ROHS COMPLIANT DEVICE

MATERIALS, ENVIRONMENTAL PERFORMANCE & FINISHES COMPLY TO MIL-DTL-3933

MARKING

PART LOOKS LIKE PRODUCT IMAGE ABOVE.
PART MARKING ORIENTATION AND FORMAT AS SHOWN.
MARKING TO BE AS LARGE AS POSSIBLE BE, CLEAR, READABLE.
"-dB" TO BE REPLACED WITH TWO DIGIT dB VALUE SPECIFIED ON WORK ORDER
YYWW = DATE CODE.

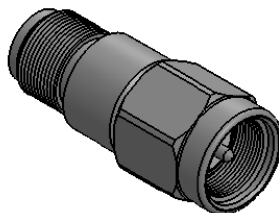
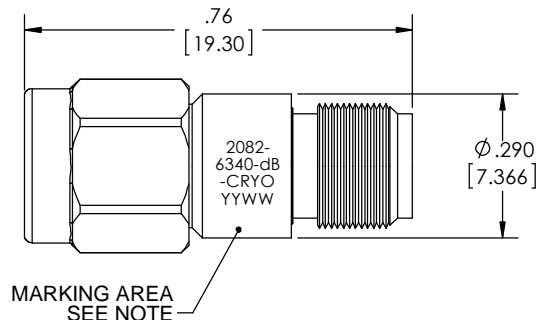


Table with 5 columns: REV, DESCRIPTION, ECO #, DATE, APPROVED. Row 1: - INITIAL RELEASE, 14-204, 8/19/14, T.KUHN

0dB - 12dB



13dB - 30dB

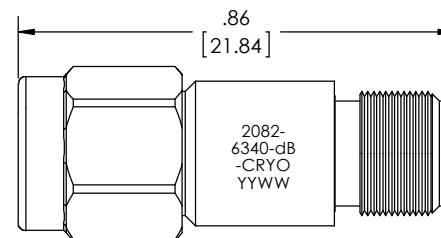


Table with 4 columns: QTY., PART NUMBER, DESCRIPTION, ITEM NO. Row 1: X, 2082-6340-dB-CRYO, ATTENUATOR, SMA-m/f, DC-18 GHz, 2 WATTS AVG, 500 WATTS PEAK. Row 2: 1, TA-2082-6340-dBU, ASSEMBLY, ATTENUATOR, SMA-m/f, DC-18 GHz, 2 WATTS AVG, 500 WATTS PEAK, UNMARKED, 1

Table with 2 columns: DIMENSIONS ARE IN INCHES AND APPLY BEFORE / AFTER PROCESSING, SURFACE ROUGHNESS µINCHES 63, FINISH: SEE NOTE, MATERIAL: SEE NOTE, NOTE: THIS DRAWING INCORPORATES THIRD ANGLE PROJECTION. INTERPRET IAW ANSI Y14.5-1982

Table with 2 columns: UNLESS OTHERWISE SPECIFIED TOLERANCES IN: DECIMALS INCH [MM], ANGLES ±0°30', REMOVE ALL BURRS/SHARP W/ BREAK / R OF .003" TO .0005" UNLESS OTHERWISE NOTED DIAS CONCENTRIC <.003 T.I.R., DO NOT SCALE PRINT

Table with 2 columns: DRAWN DATE, CHECKED DATE, ENG. APPR. DATE. MCCORMICK 8/18/14, MCCORMICK 8/18/14, T.KUHN 8/18/14

XMA Omni Spectra logo, TITLE: ATTENUATOR, SMA-m/f, DC-18 GHz, 2 WATTS AVG, 500 WATTS PEAK, CAGE CODE 3HT76, DRAWING NUMBER 2082-6340-dB-CRYO, SHEET 1 OF 1

5

4

3

2

1

X-ON Electronics

Largest Supplier of Electrical and Electronic Components

Click to view similar products for [Attenuators - Interconnects](#) category:

Click to view products by [Amphenol](#) manufacturer:

Other Similar products are found below :

[R414701000](#) [R411800121](#) [R413840115](#) [ATT-523F-05-SMA-02](#) [R413305000](#) [R411808121](#) [R412501124](#) [R414702000](#) [ATP8-10006KV](#)
[R414705000](#) [R411710124](#) [R410220121](#) [CT3369A-20](#) [09AS102-K40S3](#) [R411802000](#) [ATT-263F-03-SMA-02](#) [R417320130](#) [R412508124](#)
[R417030110](#) [ATT-523F-12-SMA-02](#) [ATT-263F-06-SMA-02](#) [ATT-0263-22-SMA-02](#) [ATT-263F-10-SMA-02](#) [ATT-523F-10-SMA-02](#)
[R422030020](#) [R422020030](#) [R417506130](#) [ATT-0263-25-SMA-02](#) [R413810000](#) [R411810124](#) [R413803000](#) [R417330110](#) [ATT-0290-02-HEX-](#)
[02](#) [R415603000](#) [R415620000](#) [R415606000](#) [R415610000](#) [ATT-0290-00-SMA-02](#) [AT-130V](#) [CATTEN-05R0-BNC](#) [CATTEN-04R0-BNC](#)
[6620_SMA-50-1/199_NE](#) [6630_SMA-50-2/199_NE](#) [CATTEN-06R0-BNC](#) [ATT-0294-02-SMA-02](#) [ATT-0298-06-HEX-02](#) [6610_SMA-50-](#)
[2/199_NE](#) [6605_SMA-50-1/199_NE](#) [6820.17.A](#) [6803.17.B](#)