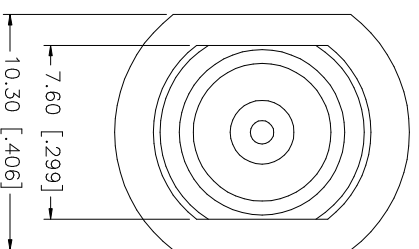
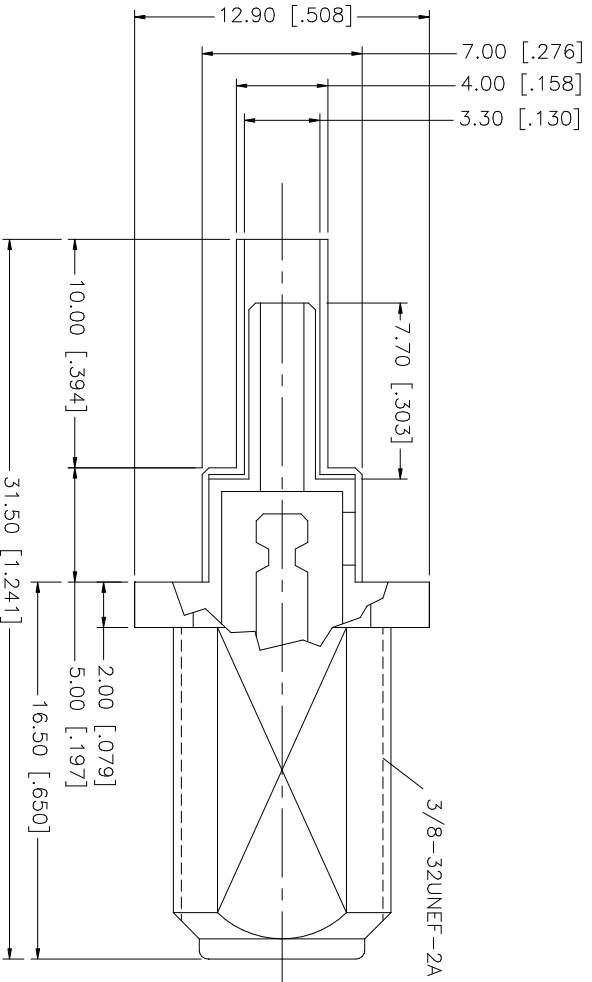
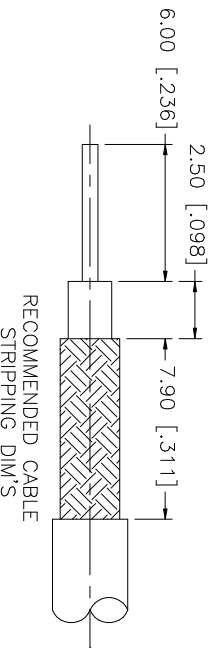


REV.	DATE	DESCRIPTION
A	06/05/03	UPDATE DRAWING FORMAT
B	10/27/05	MODIFY PLATING TO BRT. TIN



REV.	DATE	DESCRIPTION	MATERIAL	FINISH	QTY
8					
7					
6					
5					
4		FERRULE	BRASS	BRT. TIN	1
3		CONTACT PIN	BRASS	BRT. TIN	1
2		INSULATOR	P.P.	NATURAL	1
1		BODY	BRASS	BRT. TIN	1
DESCRIPTION					
MATERIAL					
FINISH					
QTY					
UNLESS OTHERWISE SPECIFIED DIMENSIONS ARE IN MILLIMETERS DIMENSIONS IN [] ARE IN INCHES AND FOR CUSTOMER REFERENCE ONLY.					
UNLESS OTHERWISE SPECIFIED TOLERANCES FOR MILLIMETERS ARE:					
0.5 - 8mm ± 0.20mm					
8 - 30mm ± 0.40mm					
30 - 120mm ± 0.50mm					
UNLESS OTHERWISE SPECIFIED TOLERANCES FOR INCHES ARE:					
.020 - .315 ± 0.007"					
.315 - 1.180 ± 0.015"					
1.180 - 4.724 ± 0.020"					
DO NOT SCALE DRAWING					
APPROVALS		DATE			
DRAWN	G.R.S.	10/27/05			
CHECKED					
ISSUED					
SHEET	1 OF 1				
CAD FILE					
C:/222/222114.DWG					
DWG. NO.		222114.DWG	REV.	B	SIZE
				A	SCALE
					NA
PART DESCRIPTION					
F CRIMP JACK (RG-179/U CABLE)					
PART NO. 222114					

X-ON Electronics

Largest Supplier of Electrical and Electronic Components

Click to view similar products for [RF Connectors / Coaxial Connectors](#) category:

Click to view products by [Amphenol](#) manufacturer:

Other Similar products are found below :

[8915-1511-000](#) [89674-0827](#) [6001-7071-019](#) [6002-7051-003](#) [6002-7551-202](#) [6059674-1](#) [619550-1](#) [630059-000](#) [M39030/3-01N](#) [M3933/25-36N](#) [6500-7071-046](#) [6769](#) [CX050L2AQ](#) [7002-1542-011](#) [7004-1512-000](#) [7009-1511-004](#) [7010-1511-000](#) [7029-1511-060](#) [7101-1541-010](#) [7101-1571-002](#) [7105-1521-002](#) [7145-1521-002](#) [7203-1571-003](#) [7209-1511-011](#) [7210-1511-015](#) [7210-1511-019](#) [73137-5015](#) [73216-2241](#) [7325-1512-000](#) [73404-2300](#) [7405-1521-005](#) [7405-1521-802](#) [7406-1521-005](#) [8527](#) [8547](#) [FS11V](#) [8808-1511-001](#) [9049-9513-000](#) [9074-9513-000](#) [9101-9573-002](#) [910A205F](#) [9130-9573-002](#) [PL11SC-026](#) [PL375-33](#) [PL40-5](#) [PL71-9](#) [PL74C-221](#) [PL75MC-217](#) [PL803-7](#) [980-8666-005](#)