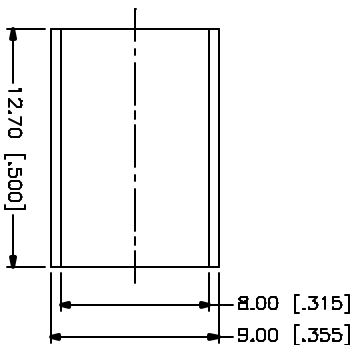
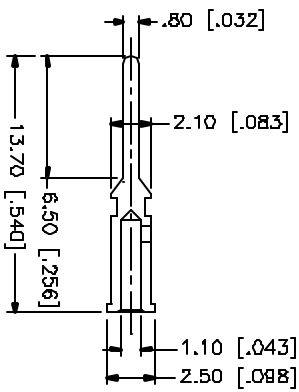
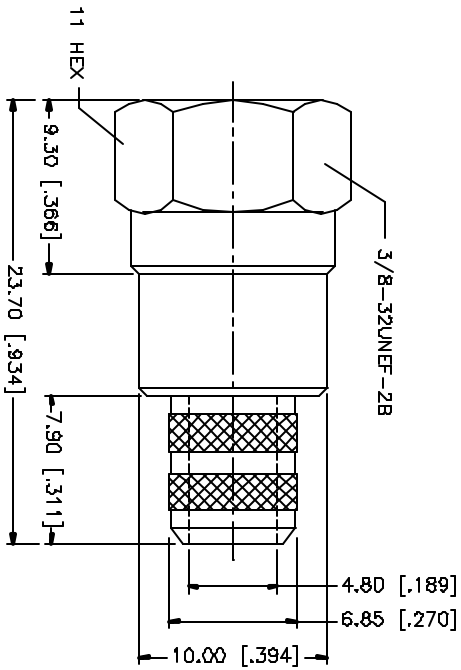
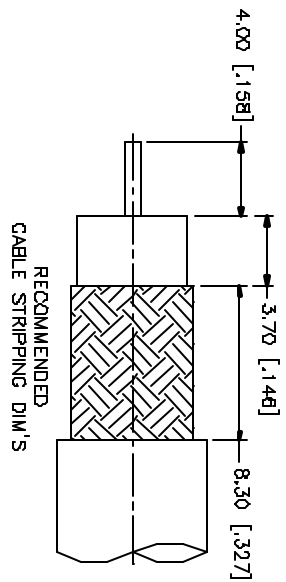


REV.	DATE	DESCRIPTION
NC	05/01/04	INITIAL RELEASE



REV.	DATE	DESCRIPTION	MATERIAL	FINISH	QTY
8					
7					
6					
5					
4			BRASS	NICKEL	1
3			BRASS	GOLD	1
2			DELRIIN	NATURAL	1
1			BRASS	NICKEL	1
DESCRIPTION		F CRIMP PLUG (FOR RG-6/U) 222123			
MATERIAL		BRASS			
FINISH		NICKEL			
QTY		1			
<p>USE THE FOLLOWING DIMENSIONS UNLESS OTHERWISE SPECIFIED IN PARENT DIMENSIONS IN [ ] ARE IN MILLIMETERS UNLESS OTHERWISE SPECIFIED. DIMENSIONS ARE TO CENTER UNLESS OTHERWISE SPECIFIED.</p> <p>UNLESS OTHERWISE SPECIFIED TOLERANCES FOR ALL DIMENSIONS ARE:</p> <p>D/S - BRASS ± 0.25mm          B - DELRIIN ± 0.40mm          30° - 120mm ± 0.50mm</p> <p>UNLESS OTHERWISE SPECIFIED TOLERANCES FOR FINISHES ARE:</p> <p>.020 - .315 = ± 0.007"          .315 - 1.180 = ± 0.015"          1.180 - 4.724 = ± 0.020"</p>					
DO NOT SCALE DRAWING					
APPROVALS		DATE			
DRAWN G.R.S.		05/01/04			
CHECKED					
ISSUED					
SHEET 1 OF 1					
DWD FILE C:/222/222123.DWG		DWG. NO. 222123.DWG			
REV. NC		REV. NC		SIZE A	SCALE NA

**Amphenol Connex**

## X-ON Electronics

Largest Supplier of Electrical and Electronic Components

*Click to view similar products for [RF Connectors / Coaxial Connectors](#) category:*

*Click to view products by [Amphenol](#) manufacturer:*

Other Similar products are found below :

[8915-1511-000](#) [89674-0827](#) [6001-7071-019](#) [6002-7051-003](#) [6002-7551-202](#) [6059674-1](#) [619550-1](#) [630059-000](#) [M39030/3-01N](#) [M3933/25-36N](#) [6500-7071-046](#) [6769](#) [CX050L2AQ](#) [7002-1542-011](#) [7004-1512-000](#) [7009-1511-004](#) [7010-1511-000](#) [7029-1511-060](#) [7101-1541-010](#) [7101-1571-002](#) [7105-1521-002](#) [7145-1521-002](#) [7203-1571-003](#) [7209-1511-011](#) [7210-1511-015](#) [7210-1511-019](#) [73137-5015](#) [73216-2241](#) [7325-1512-000](#) [73404-2300](#) [7405-1521-005](#) [7405-1521-802](#) [7406-1521-005](#) [8527](#) [8547](#) [FS11V](#) [8808-1511-001](#) [9049-9513-000](#) [9074-9513-000](#) [9101-9573-002](#) [910A205F](#) [9130-9573-002](#) [PL11SC-026](#) [PL375-33](#) [PL40-5](#) [PL71-9](#) [PL74C-221](#) [PL75MC-217](#) [PL803-7](#) [980-8666-005](#)