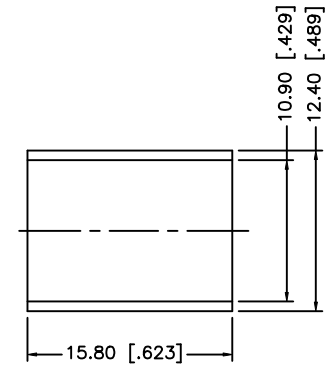
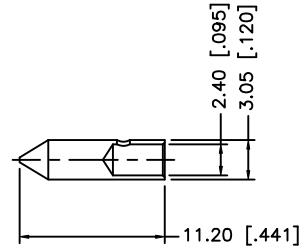
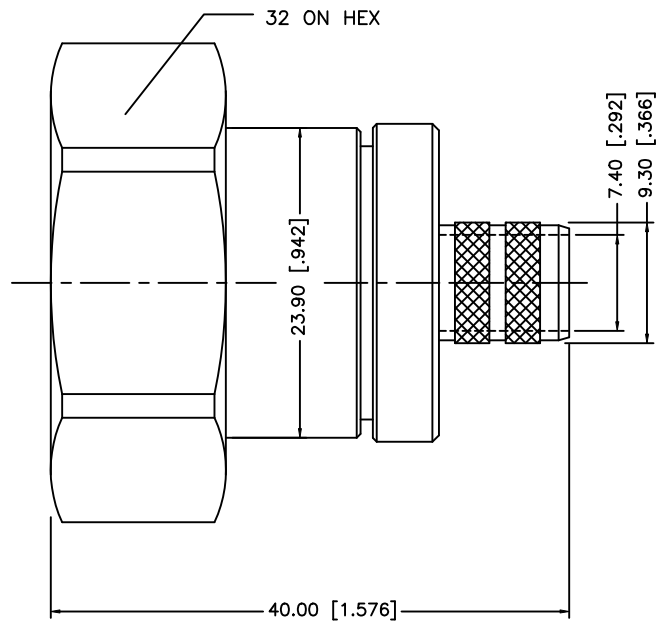
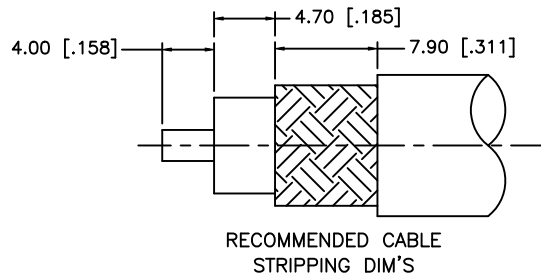


REV.	DATE	ECR NO.	DESCRIPTION
A	12/29/00	-	MODIFY PLATING TO SILVER
B	12/27/05	-	MODIFY PLATING TO NEXCOTE, UPDATE DRAWING FORMAT
C	07/27/08	-	REVISE MATING FACE TO 32 HEX NUT



NOTES:

1. CRIMPED FERRULE HEX CRIMP SIZE .429" [10.9]
2. CRIMPED CONTACT PIN HEX CRIMP SIZE .100" [2.54]

REV.	DATE	ECR NO.	DESCRIPTION																								
8																											
7																											
6																											
5																											
4																											
3																											
2																											
1																											
<table border="1"> <thead> <tr> <th>DESCRIPTION</th> <th>MATERIAL</th> <th>FINISH</th> <th>QTY</th> </tr> </thead> <tbody> <tr> <td>FERRULE</td> <td>COPPER</td> <td>NEXCOTE</td> <td>1</td> </tr> <tr> <td>CONTACT PIN</td> <td>BRASS</td> <td>GOLD</td> <td>1</td> </tr> <tr> <td>INSULATOR</td> <td>PTFE</td> <td>NATURAL</td> <td>1</td> </tr> <tr> <td>HOUSING</td> <td>BRASS</td> <td>NEXCOTE</td> <td>1</td> </tr> <tr> <td>BODY</td> <td>BRASS</td> <td>NEXCOTE</td> <td>1</td> </tr> </tbody> </table>				DESCRIPTION	MATERIAL	FINISH	QTY	FERRULE	COPPER	NEXCOTE	1	CONTACT PIN	BRASS	GOLD	1	INSULATOR	PTFE	NATURAL	1	HOUSING	BRASS	NEXCOTE	1	BODY	BRASS	NEXCOTE	1
DESCRIPTION	MATERIAL	FINISH	QTY																								
FERRULE	COPPER	NEXCOTE	1																								
CONTACT PIN	BRASS	GOLD	1																								
INSULATOR	PTFE	NATURAL	1																								
HOUSING	BRASS	NEXCOTE	1																								
BODY	BRASS	NEXCOTE	1																								
<p>UNLESS OTHERWISE SPECIFIED DIMENSIONS ARE IN MILLIMETERS. DIMENSIONS IN [] ARE IN INCHES AND FOR CUSTOMER REFERENCE ONLY.</p> <p>UNLESS OTHERWISE SPECIFIED TOLERANCES FOR MILLIMETERS ARE: 0.5 - 8mm ± 0.20mm 8 - 30mm ± 0.40mm 30 - 120mm ± 0.50mm</p> <p>UNLESS OTHERWISE SPECIFIED TOLERANCES FOR INCHES ARE: .020 - .315 = ± 0.007" .315 - 1.180 = ± 0.015" 1.180 - 4.724 = ± 0.020"</p> <p>DO NOT SCALE DRAWING</p>																											
APPROVALS		DATE																									
DRAWN GRS		07/27/08																									
CHECKED																											
ISSUED																											
SHEET 1 OF 1																											
CAD FILE		C:/272/272105.DWG																									
<h1>Amphenol Connex</h1>																											
7/16 CRIMP PLUG (FOR RG-8/U, 213/U, 393/U CABLE)																											
PART NO. 272105																											
DWG. NO. 272105.DWG		REV. C	SCALE NA																								

X-ON Electronics

Largest Supplier of Electrical and Electronic Components

Click to view similar products for [RF Connectors / Coaxial Connectors](#) category:

Click to view products by [Amphenol](#) manufacturer:

Other Similar products are found below :

[8915-1511-000](#) [89674-0827](#) [6001-7071-019](#) [6002-7051-003](#) [6002-7551-202](#) [6059674-1](#) [619550-1](#) [630059-000](#) [M39030/3-01N](#) [M3933/25-36N](#) [6500-7071-046](#) [6769](#) [CX050L2AQ](#) [7002-1542-011](#) [7004-1512-000](#) [7009-1511-004](#) [7010-1511-000](#) [7029-1511-060](#) [7101-1541-010](#) [7101-1571-002](#) [7105-1521-002](#) [7145-1521-002](#) [7203-1571-003](#) [7209-1511-011](#) [7210-1511-015](#) [7210-1511-019](#) [73137-5015](#) [73216-2241](#) [7325-1512-000](#) [73404-2300](#) [7405-1521-005](#) [7405-1521-802](#) [7406-1521-005](#) [8527](#) [8547](#) [FS11V](#) [8808-1511-001](#) [9049-9513-000](#) [9074-9513-000](#) [9101-9573-002](#) [910A205F](#) [9130-9573-002](#) [PL11SC-026](#) [PL375-33](#) [PL40-5](#) [PL71-9](#) [PL74C-221](#) [PL75MC-217](#) [PL803-7](#) [980-8666-005](#)