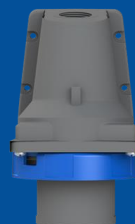


232EBS6W

Wall mounted inlet

2CMA101189R1000



Wall mounted inlet, 2P+E, 32A, 200 ... 250 V Clock Position
Of Grounding Contact 6 hour Color code Blue

GENERAL

Product Name	Wall mounted inlet
Product ID	2CMA101189R1000
Function	Wall mounted inlet
EAN	73926911891
Catalog Description	Wall mounted inlets, 2P+E, 32A, 200 ... 250 V
Country of Origin	Czech Republic (CZ)
E-Number Finland	2420230
E-Number Norway	1540736
E-Number Sweden	E2417566
Standards	IEC 60309-1, -2
RoHS Status	Following EU Directive 2011/65/EU

DIMENSIONS

Product Net Width	89 millimetre
Product Net Height	105 millimetre
Product Net Length	150 millimetre
Product Net Depth	150 millimetre
Product Net Weight	0.26 kilogram

TECHNICAL

Product Main Type	EBS
Color	Blue
Number of Poles	3
Clock Position	6Hour
Rated Current	32 ampere
Rated Voltage	200 ... 250 volt
Frequency	50 hertz 60 hertz
Degree of Protection	IP67
Cable Cross-Section	2.5...6 mm ²
Housing Material	Plastic (PA)
Plug Angle	Angled
Product Group	Easy&Safe

PACKAGING

Package Width	134 millimetre
Package Height	467 millimetre
Package Gross Weight	1.3 kilogram
Package Length	177 millimetre
Package Units	box 5 piece

X-ON Electronics

Largest Supplier of Electrical and Electronic Components

Click to view similar products for [Heavy Duty Power Connectors](#) category:

Click to view products by [Amphenol](#) manufacturer:

Other Similar products are found below :

[6646058-2](#) [6646137-1](#) [6646138-1](#) [6646940-1](#) [6651091-1](#) [6651525-1](#) [6651529-1](#) [696475-1](#) [702-32-01109](#) [73080255059](#) [73080965046](#)
[7310205040001](#) [765-16-0080B](#) [765-18-0080D](#) [MHDM35-15-K](#) [902-77-02113](#) [PS00/A0620/6300](#) [AN0024023](#) [154-42B7WM250](#) [1643543-1](#)
[1766966-1](#) [1791340000](#) [NLDFT-3-BL-L-S120-M40A](#) [1926015-1](#) [NPS-3-BL-T6](#) [2-1589900-8](#) [9300480317](#) [294-0091-01100](#) [295-0068-](#)
[01100](#) [296-0040-01100](#) [1-6609148-0](#) [A32595-0049](#) [1766249-1](#) [19000005132](#) [1-966831-8](#) [AN0024202](#) [AN0264023](#) [279-0841-10100A](#) [281-](#)
[0334-00100A](#) [RMSB4](#) [419-2083-301](#) [LCDX4/0-14B-X](#) [075-8519-001](#) [078238-1613](#) [07.470.3256.0](#) [09000005288](#) [09140240311](#)
[09300240303](#) [09370009946](#) [09300160318ML](#)