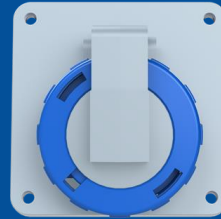


216RAU6W

Panel mounted socket

2CMA166996R1000



IEC Receptacle 16A 2P3W 220-240V Clock Position Of
Grounding Contact 6 hour Color code Blue

GENERAL

Product Name	Panel mounted socket
Product ID	2CMA166996R1000
Function	Receptacle
EAN	7392696669962
Catalog Description	IEC Receptacle 16A 2P3W 220-240V
Country of Origin	Czech Republic (CZ)
E-Number Finland	2421291
E-Number Norway	1561902
E-Number Sweden	E2416695
Standards	IEC 60309-1, -2
RoHS Status	Following EU Directive 2011/65/EU

TECHNICAL

Product Main Type	TRAU
Color	Blue
Number of Poles	3
Clock Position	6Hour
Rated Current	16 ampere
Rated Voltage	200 ... 250 volt
Frequency	50 hertz 60 hertz
Degree of Protection	IP67 IP69
Cable Cross-Section	1.5...4 mm ²
Housing Material	Thermoplastic (PBT)
Plug Angle	Angled
Product Group	Tough&Safe

DIMENSIONS

Product Net Width	95 millimetre
Product Net Height	102 millimetre
Product Net Length	102 millimetre
Product Net Depth	102 millimetre
Product Net Weight	0.23 kilogram

PACKAGING

Package Width	110 millimetre
Package Height	110 millimetre
Package Gross Weight	0.23 kilogram
Package Length	110 millimetre
Package Units	box 1 piece

X-ON Electronics

Largest Supplier of Electrical and Electronic Components

Click to view similar products for [Heavy Duty Power Connectors](#) category:

Click to view products by [Amphenol](#) manufacturer:

Other Similar products are found below :

[6646058-2](#) [6646137-1](#) [6646138-1](#) [6646940-1](#) [6651091-1](#) [6651525-1](#) [6651529-1](#) [696475-1](#) [702-32-01109](#) [73080255059](#) [73080965046](#)
[7310205040001](#) [765-16-0080B](#) [765-18-0080D](#) [MHDM35-15-K](#) [902-77-02113](#) [PS00/A0620/6300](#) [AN0024023](#) [154-42B7WM250](#) [1643543-1](#)
[1766966-1](#) [1791340000](#) [NLDFT-3-BL-L-S120-M40A](#) [1926015-1](#) [NPS-3-BL-T6](#) [2-1589900-8](#) [9300480317](#) [294-0091-01100](#) [295-0068-](#)
[01100](#) [296-0040-01100](#) [1-6609148-0](#) [A32595-0049](#) [1766249-1](#) [19000005132](#) [1-966831-8](#) [AN0024202](#) [AN0264023](#) [279-0841-10100A](#) [281-](#)
[0334-00100A](#) [RMSB4](#) [419-2083-301](#) [LCDX4/0-14B-X](#) [075-8519-001](#) [078238-1613](#) [07.470.3256.0](#) [09000005288](#) [09140240311](#)
[09300240303](#) [09370009946](#) [09300160318ML](#)