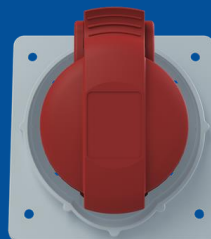


432RAM6

# Panel mounted socket

## 2CMA170044R1000



Panel mounted socket, earthing sleeve position 6h, rated current 32A, IP44 splashproof, minimized flange, angled, 3-poles+neutral+earth, frequency 50-60 Hz, color code Red

## GENERAL

<b>Product Name</b>	Panel mounted socket
<b>Product ID</b>	2CMA170044R1000
<b>Function</b>	Panel mounted socket
<b>EAN</b>	73926960443
<b>Catalog Description</b>	Socket-outlet, panel mounting, 6h, 32A, IP44, minimized flange, angled, 3P+N+E
<b>Country of Origin</b>	Czech Republic (CZ)
<b>E-Number Finland</b>	2421414
<b>E-Number Norway</b>	2416487
<b>E-Number Sweden</b>	E2416487
<b>Standards</b>	IEC 60309-1, -2
<b>RoHS Status</b>	Following EU Directive 2011/65/EU

## DIMENSIONS

<b>Product Net Width</b>	94 millimetre
<b>Product Net Height</b>	99 millimetre
<b>Product Net Length</b>	116 millimetre
<b>Product Net Depth</b>	116 millimetre
<b>Product Net Weight</b>	0.24 kilogram

## TECHNICAL

<b>Product Main Type</b>	ERAM
<b>Color</b>	Red
<b>Number of Poles</b>	5
<b>Clock Position</b>	6Hour
<b>Rated Current</b>	32 ampere
<b>Rated Voltage</b>	200/346 ... 240/415 volt
<b>Frequency</b>	50 hertz 60 hertz
<b>Degree of Protection</b>	IP44
<b>Cable Cross-Section</b>	2.5...10 mm <sup>2</sup>
<b>Housing Material</b>	Plastic (PA)
<b>Plug Angle</b>	Angled
<b>Product Group</b>	Easy&Safe

## PACKAGING

<b>Package Width</b>	188 millimetre
<b>Package Height</b>	428 millimetre
<b>Package Gross Weight</b>	2.4 kilogram
<b>Package Length</b>	175 millimetre
<b>Package Units</b>	box 10 piece

## X-ON Electronics

Largest Supplier of Electrical and Electronic Components

*Click to view similar products for [Heavy Duty Power Connectors](#) category:*

*Click to view products by [Amphenol](#) manufacturer:*

Other Similar products are found below :

[6646058-2](#) [6646137-1](#) [6646138-1](#) [6646940-1](#) [6651091-1](#) [6651525-1](#) [6651529-1](#) [696475-1](#) [702-32-01109](#) [73080255059](#) [73080965046](#)  
[7310205040001](#) [765-16-0080B](#) [765-18-0080D](#) [MHDM35-15-K](#) [902-77-02113](#) [PS00/A0620/6300](#) [AN0024023](#) [154-42B7WM250](#) [1643543-1](#)  
[1766966-1](#) [1791340000](#) [NLDFT-3-BL-L-S120-M40A](#) [1926015-1](#) [NPS-3-BL-T6](#) [2-1589900-8](#) [9300480317](#) [294-0091-01100](#) [295-0068-](#)  
[01100](#) [296-0040-01100](#) [1-6609148-0](#) [A32595-0049](#) [1766249-1](#) [19000005132](#) [1-966831-8](#) [AN0024202](#) [AN0264023](#) [279-0841-10100A](#) [281-](#)  
[0334-00100A](#) [RMSB4](#) [419-2083-301](#) [LCDX4/0-14B-X](#) [075-8519-001](#) [078238-1613](#) [07.470.3256.0](#) [09000005288](#) [09140240311](#)  
[09300240303](#) [09370009946](#) [09300160318ML](#)