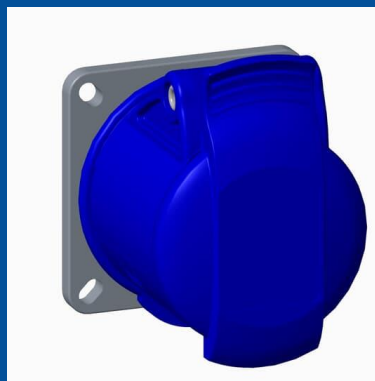


216R6

Panel mounted socket

2CMA193146R1000

Panel mounted socket, earthing sleeve position 6h, rated current 16A, IP44 splashproof, 3-poles+neutral+earth, frequency 50-60 Hz, color code Blue



GENERAL

Product Name	Panel mounted socket
Product ID	2CMA193146R1000
Function	Panel mounted socket
EAN	7392696931465
Catalog Description	Socket-outlet, panel mounting, 6h, 16A, IP44, minimized flange, straight, 2P+E
Country of Origin	Czech Republic (CZ)
E-Number Finland	2421232
E-Number Norway	1547302
E-Number Sweden	E2416603
Standards	IEC 60309-1, -2
RoHS Status	Following EU Directive 2011/65/EU

DIMENSIONS

Product Net Width	56 millimetre
Product Net Height	73 millimetre
Product Net Length	85 millimetre
Product Net Depth	85 millimetre
Product Net Weight	0.23 kilogram

TECHNICAL

Product Main Type	ER
Color	Blue
Number of Poles	3
Clock Position	6Hour
Rated Current	16 ampere
Rated Voltage	200 ... 250 volt
Frequency	50 hertz 60 hertz
Degree of Protection	IP44
Cable Cross-Section	1.5...4 mm ²
Housing Material	Plastic (PA)
Plug Angle	Straight
Product Group	Easy&Safe

PACKAGING

Package Width	120 millimetre
Package Height	285 millimetre
Package Gross Weight	2.3 kilogram
Package Length	138 millimetre
Package Units	box 10 piece

X-ON Electronics

Largest Supplier of Electrical and Electronic Components

Click to view similar products for [Heavy Duty Power Connectors](#) category:

Click to view products by [Amphenol](#) manufacturer:

Other Similar products are found below :

[6646058-2](#) [6646137-1](#) [6646138-1](#) [6646940-1](#) [6651091-1](#) [6651525-1](#) [6651529-1](#) [696475-1](#) [702-32-01109](#) [73080255059](#) [73080965046](#)
[7310205040001](#) [765-16-0080B](#) [765-18-0080D](#) [MHDM35-15-K](#) [902-77-02113](#) [PS00/A0620/6300](#) [AN0024023](#) [154-42B7WM250](#) [1643543-1](#)
[1766966-1](#) [1791340000](#) [NLDFT-3-BL-L-S120-M40A](#) [1926015-1](#) [NPS-3-BL-T6](#) [2-1589900-8](#) [9300480317](#) [294-0091-01100](#) [295-0068-](#)
[01100](#) [296-0040-01100](#) [1-6609148-0](#) [A32595-0049](#) [1766249-1](#) [19000005132](#) [1-966831-8](#) [AN0024202](#) [AN0264023](#) [279-0841-10100A](#) [281-](#)
[0334-00100A](#) [RMSB4](#) [419-2083-301](#) [LCDX4/0-14B-X](#) [075-8519-001](#) [078238-1613](#) [07.470.3256.0](#) [09000005288](#) [09140240311](#)
[09300240303](#) [09370009946](#) [09300160318ML](#)